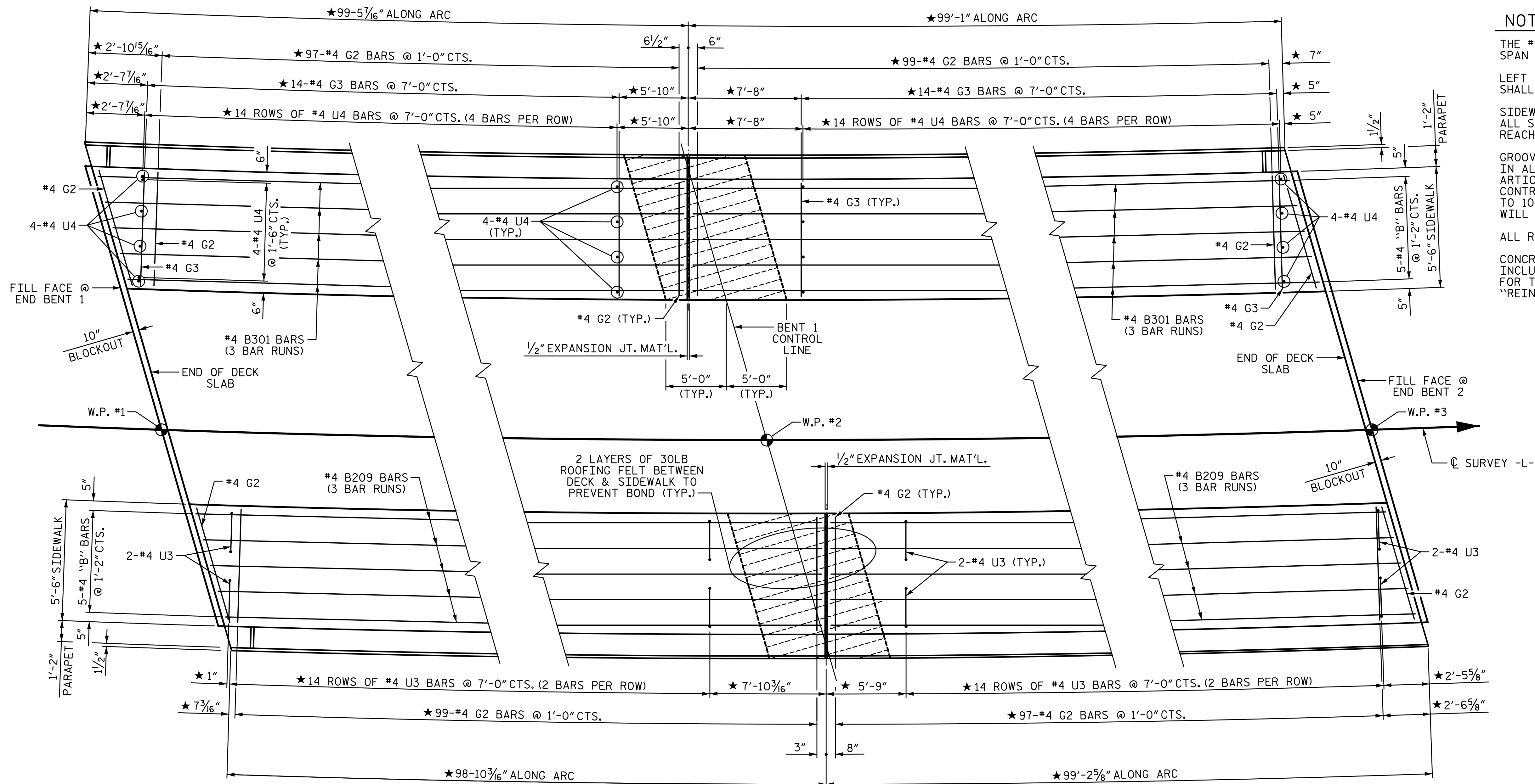


2/7/2023 11:19:35 AM P:\Raleigh\Projects\2018\Division 7 (SEA)\17BP7R142 Gullford 225 (Rehobeth Ch Rd over I-85 Bus)\Structures\Drawings\Final\17BP7R142_SMU_SW_400225.dgn



NOTES:

THE #4 U3 BARS MAY BE PUSHED INTO GREEN CONCRETE AFTER SPAN HAS BEEN SCREEDED OFF FOR STAGE 2 SIDEWALK.

LEFT SIDEWALK SHALL BE POURED IN STAGE 3. #4 U4 BARS SHALL BE DRILLED AND GROUTED IN PLACE.

SIDEWALK IN A CONTINUOUS UNIT SHALL NOT BE CAST UNTIL ALL SLAB CONCRETE IN THE UNIT HAS BEEN CAST AND HAS REACHED A MINIMUM COMPRESSIVE STRENGTH OF 3000 PSI.

GROOVED CONTRACTION JOINTS, 1/2" IN DEPTH, SHALL BE TOOLED IN ALL EXPOSED FACES OF THE SIDEWALK IN ACCORDANCE WITH ARTICLE 825-10(B) OF THE STANDARD SPECIFICATIONS. THE CONTRACTION JOINTS SHALL BE LOCATED AT A SPACING OF 8 FT. TO 10 FT. BETWEEN EXPANSION JOINTS. NO CONTRACTION JOINT WILL BE REQUIRED FOR SEGMENTS LESS THAN 10 FT. IN LENGTH.

ALL REINFORCING STEEL IN SIDEWALKS SHALL BE EPOXY COATED.

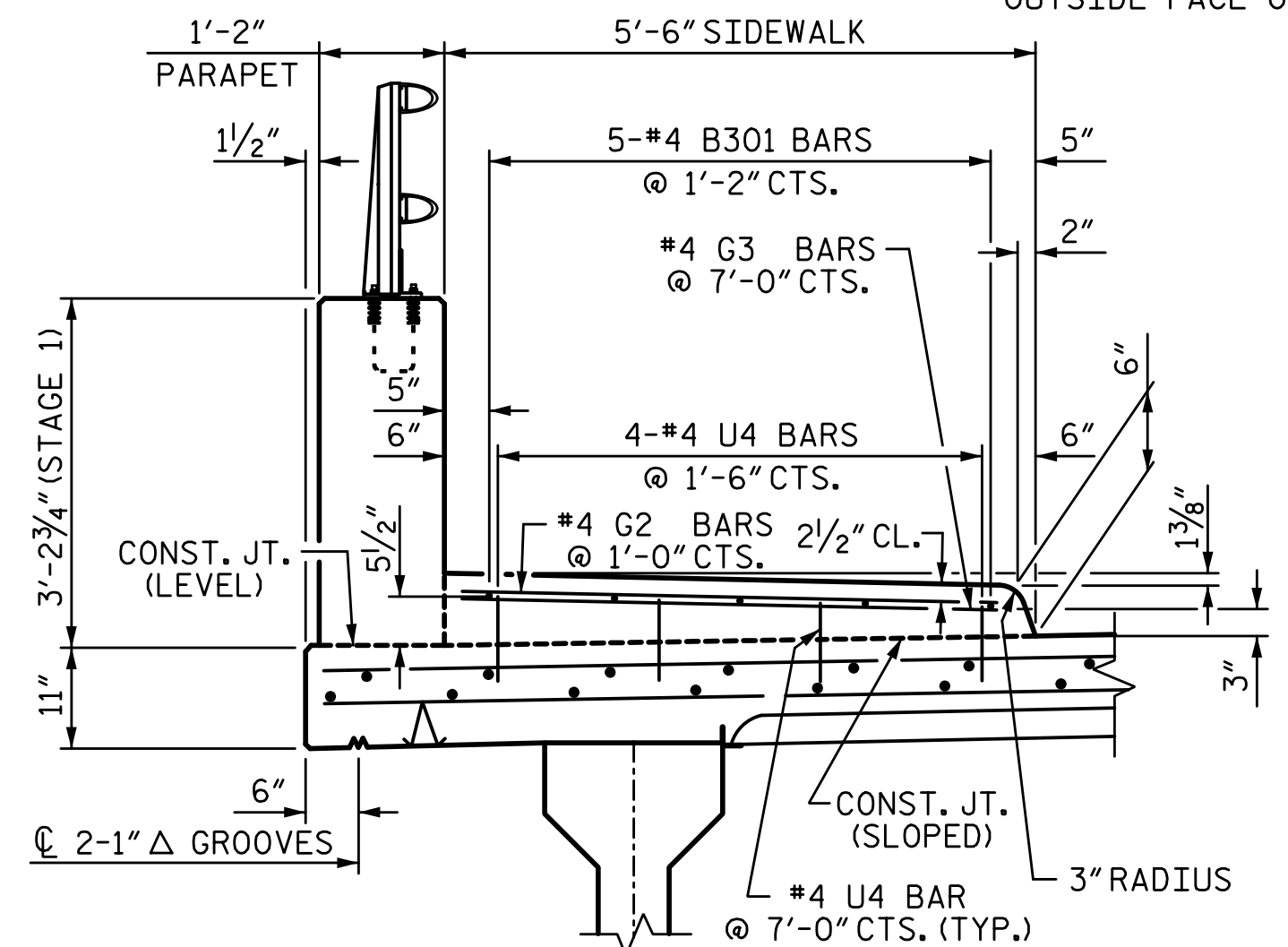
CONCRETE AND REINFORCING STEEL FOR THE SIDEWALKS ARE INCLUDED IN THE SUPERSTRUCTURE BILL OF MATERIAL. PAYMENT FOR THE SIDEWALK SHALL BE INCLUDED IN THE PAY ITEM "REINFORCED CONCRETE DECK SLAB".

SPAN A

SPAN B

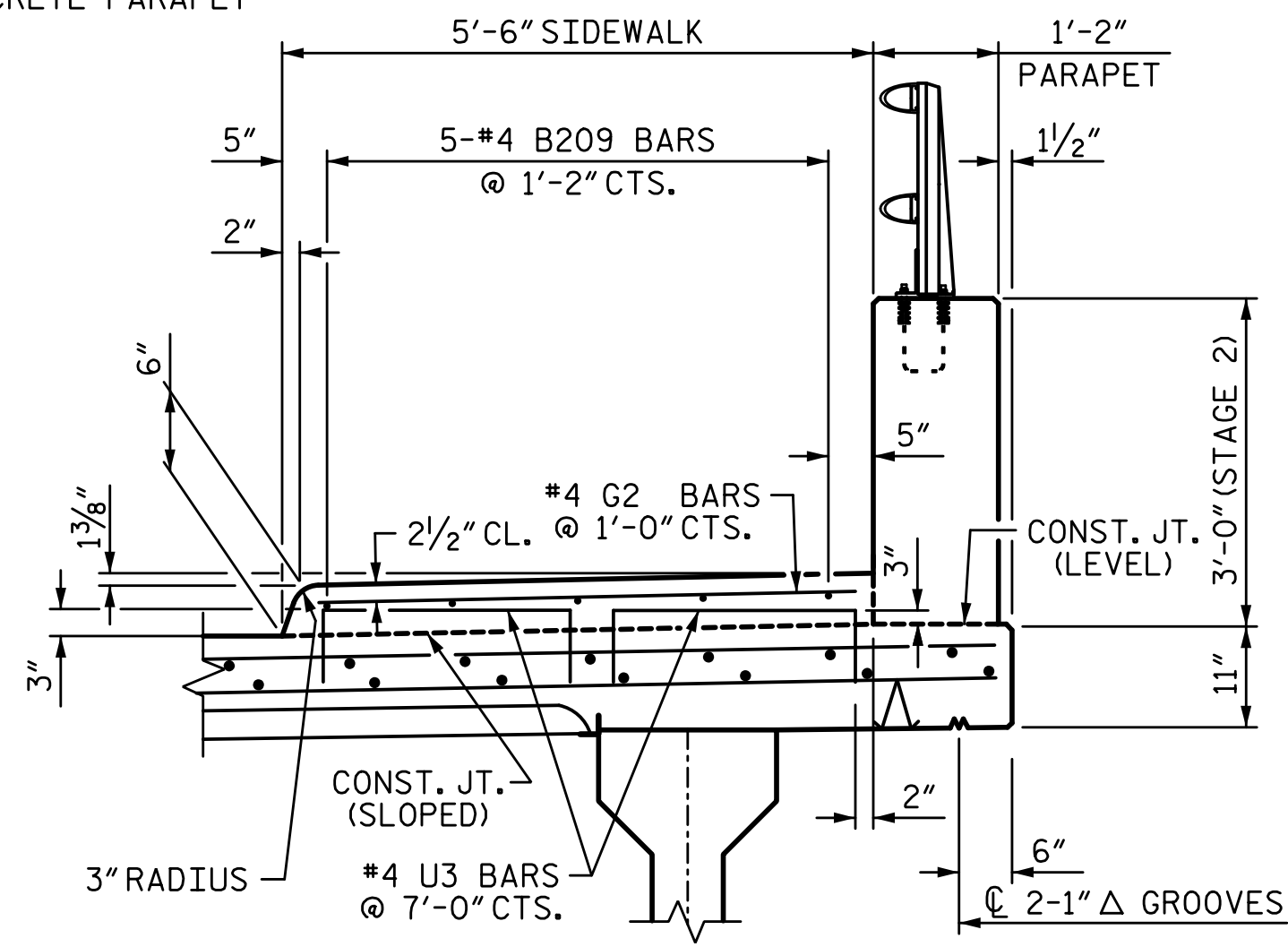
PLAN OF SIDEWALK

★ DIMENSIONS ARE MEASURED ALONG OUTSIDE FACE OF CONCRETE PARAPET



SECTION THRU SIDEWALK-STAGE 3

SEE NOTES FOR PLACEMENT OF #4 U4 BARS.



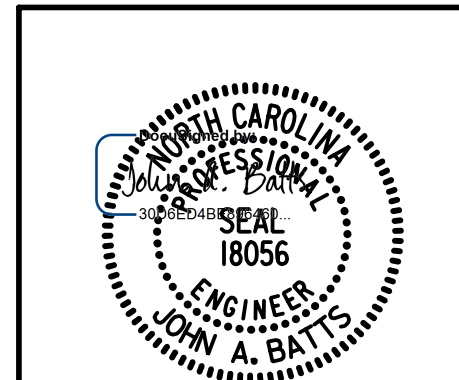
SECTION THRU SIDEWALK-STAGE 2

SEE NOTES FOR PLACEMENT OF #4 U3 BARS.

PROJECT NO. BP7.R006.3
GUILFORD COUNTY
 STATION: 18+82.09 -L-

STATE OF NORTH CAROLINA
 DEPARTMENT OF TRANSPORTATION
 RALEIGH
 SUPERSTRUCTURE

SIDEWALK DETAILS



W.W.G.I.
 5640 Dillard Drive, Suite 200
 Cary, NC 27518
 LICENSURE NO. C-4434

DRAWN BY: S.D. COOPER	DATE: 2-22
CHECKED BY: J.A. BATTS	DATE: 2-22
DESIGN ENGINEER OF RECORD: J.A. BATTS	DATE: 2-22

REVISIONS				SHEET NO.	
NO.	BY:	DATE:	NO.	BY:	DATE:
1			3		
2			4		

2/7/2023 | 8:52 AM PS

DOCUMENT NOT CONSIDERED FINAL
 UNLESS ALL SIGNATURES COMPLETED

TOTAL SHEETS: 58