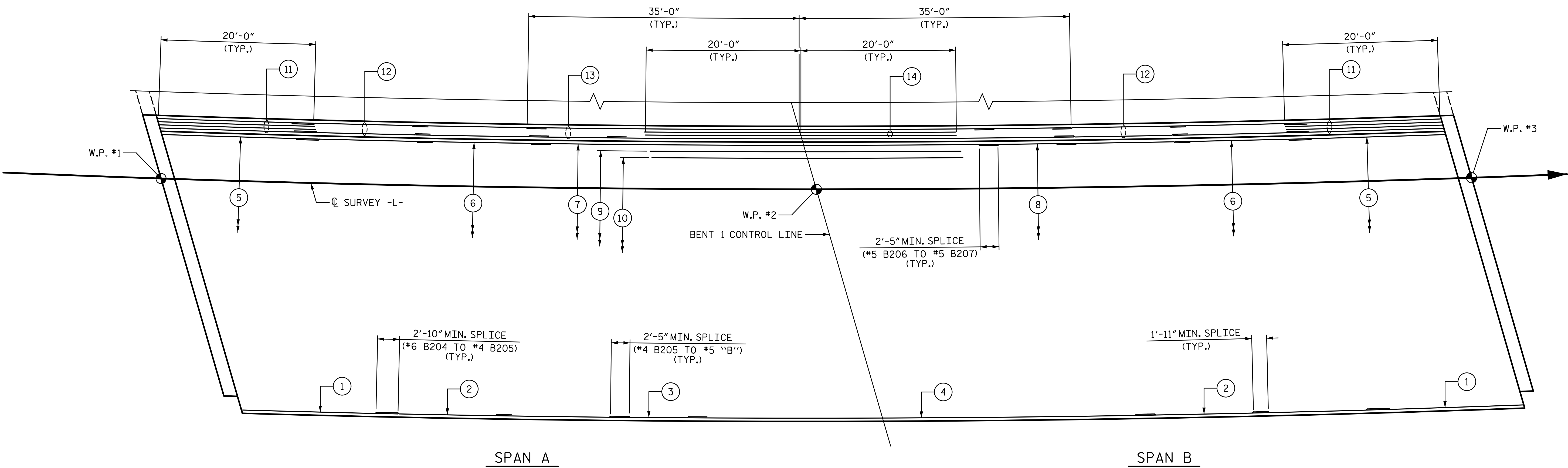
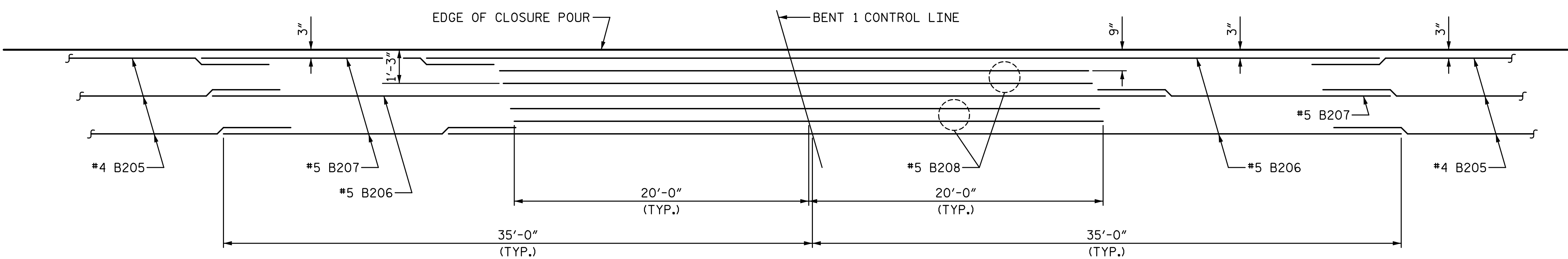


2/7/2023 11:19:24 AM P:\Raleigh\Projects\2018\Division 7 (SEA)\17BP7R142 Gullford 225 (Rehobeth Ch Rd over I-85 Bus)\Structures\Drawings\Final\17BP7R142_SMU_S_400225.dgn



PLAN OF SPANS

TOP OF SLAB "B" BAR REINFORCEMENT LAYOUT



TOP OF DECK "B" BAR PLACEMENT

AT BENT

- | | | |
|--|---|---|
| <ul style="list-style-type: none"> ① 1-#6 B204 (TOP OF SLAB) (SEE TYPICAL SECTION) ② 1-#4 B205 (2 BAR RUNS) (TOP OF SLAB) (SEE TYPICAL SECTION) ③ 1-#5 B207 (TOP OF SLAB) (SEE TYPICAL SECTION) ④ 1-#5 B206 (TOP OF SLAB) (SEE TYPICAL SECTION) ⑤ 83-#6 B204 @ 6"CTS. (TOP OF SLAB) (SEE TYPICAL SECTION) | <ul style="list-style-type: none"> ⑥ 28-#4 B205 @ 1'-6"CTS. (2 BAR RUNS) (TOP OF SLAB) (SEE TYPICAL SECTION) ⑦ 28-#5 B206 @ 1'-6"CTS. (TOP OF SLAB) (SEE TYPICAL SECTION) ⑧ 28-#5 B207 @ 1'-6"CTS. (TOP OF SLAB) (SEE TYPICAL SECTION) ⑨ 28-#5 B208 @ 1'-6"CTS. (TOP OF SLAB) (SEE TYPICAL SECTION) ⑩ 27-#5 B208 @ 1'-6"CTS. (TOP OF SLAB) (SEE TYPICAL SECTION) | <ul style="list-style-type: none"> ⑪ 4-#6 B204 @ 6"CTS. (TOP OF SLAB) (SEE TYPICAL SECTION) ⑫ 4-#4 B205 @ 6"CTS. (2 BAR RUNS) (TOP OF SLAB) (SEE TYPICAL SECTION) ⑬ 2-#5 B206 OR #5 B207 @ 1'-6"CTS. (TOP OF SLAB) (SEE TYPICAL SECTION) ⑭ 2-#5 B208 @ 6"CTS. (TOP OF SLAB) (SEE TYPICAL SECTION) |
|--|---|---|

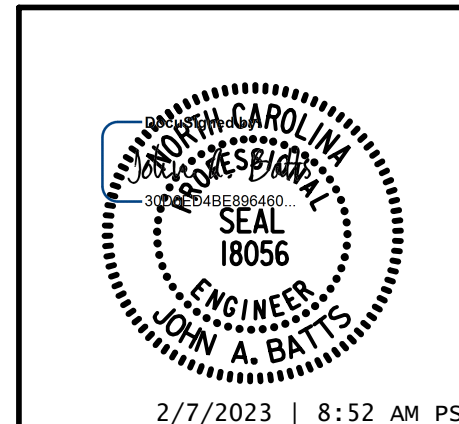
PROJECT NO. BP7.R006.3
GUILFORD COUNTY
 STATION: 18+82.09 -L-

SHEET 8 OF 8

STATE OF NORTH CAROLINA
 DEPARTMENT OF TRANSPORTATION
 RALEIGH
 SUPERSTRUCTURE

PLAN OF SPANS

STAGE 2



W WGI

5640 Dillard Drive, Suite 200
 Cary, NC 27518

LICENSURE NO. C-4434

DRAWN BY: T. BANKOVICH DATE: 2-22
 CHECKED BY: J.A. BATTS DATE: 2-22
 DESIGN ENGINEER OF RECORD: J.A. BATTS DATE: 2-22

REVISIONS						SHEET NO.
NO.	BY:	DATE:	NO.	BY:	DATE:	TOTAL SHEETS
1			3			58
2			4			

DOCUMENT NOT CONSIDERED FINAL
 UNLESS ALL SIGNATURES COMPLETED