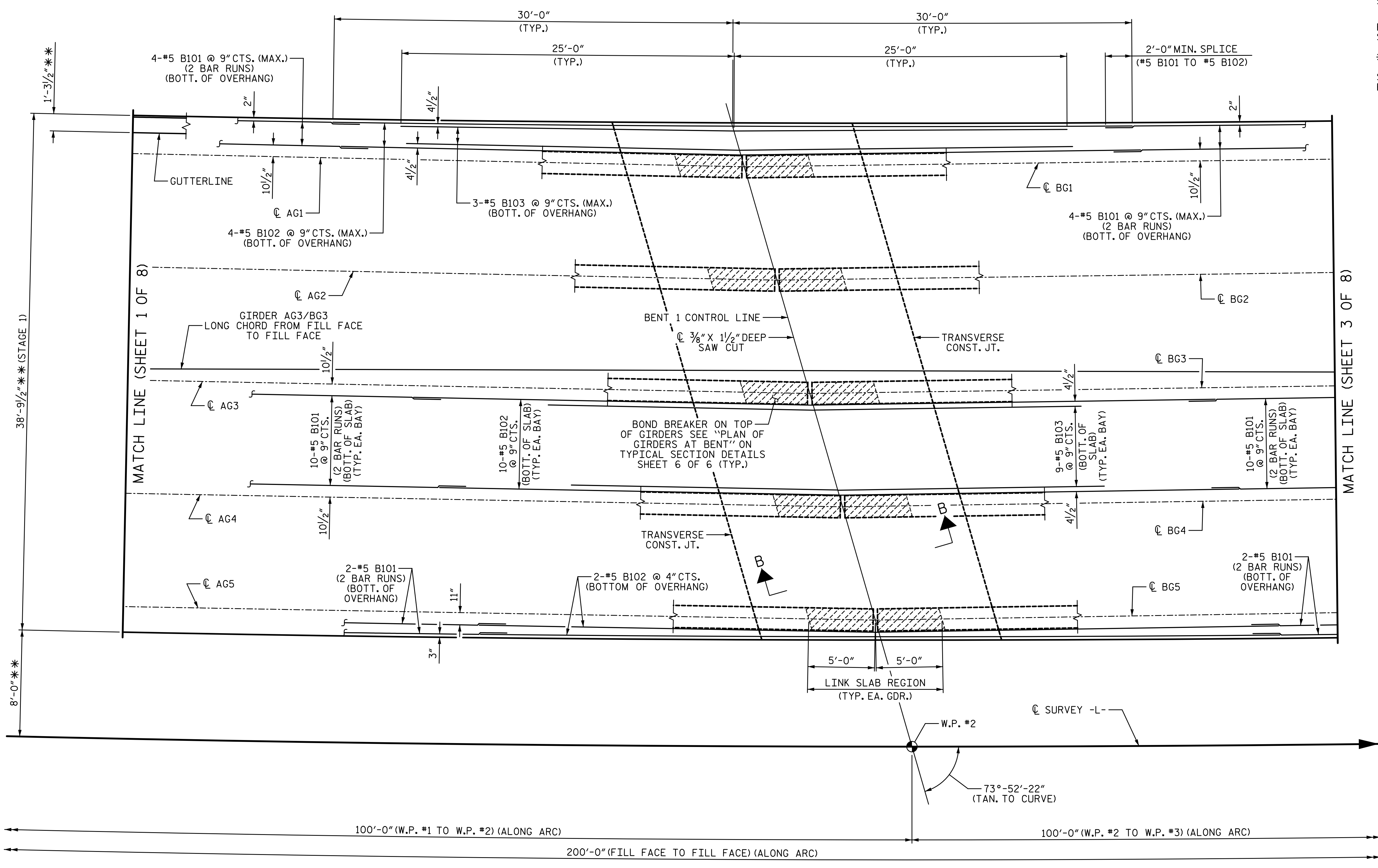


2/7/2023 11:19:21 AM P:\Raleigh\Projects\2018\Division 7 (SEA)\17BP7R142 Guilford 225 (Rehobeth Ch Rd over I-85 Bus)\Structures\Drawings\Final\17BP7R142_SMU_S_400225.dgn

NOTES:
 FOR SECTION B-B, SEE "SUPERSTRUCTURE TYPICAL SECTION" SHEET 6 OF 6.
 FOR "B" BARS IN TOP OF DECK, SEE SHEET 4 OF 8.
 ** RADIAL DIMENSION.
 SEE "PLAN OF SPANS" SHEET 1 OF 8 FOR ADDITIONAL NOTES.



PLAN OF SPANS

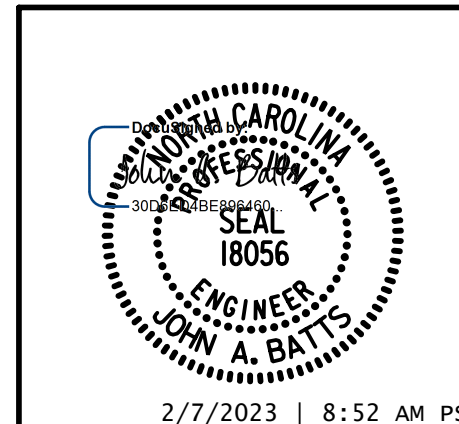
PROJECT NO. BP7.R006.3
GUILFORD COUNTY
 STATION: 18+82.09 -L-

SHEET 2 OF 8

STATE OF NORTH CAROLINA
 DEPARTMENT OF TRANSPORTATION
 RALEIGH
 SUPERSTRUCTURE

PLAN OF SPANS

STAGE 1



DRAWN BY: T. BANKOVICH	DATE: 2-22
CHECKED BY: J.A. BATTS	DATE: 2-22
DESIGN ENGINEER OF RECORD: J.A. BATTS	DATE: 2-22

LICENSURE NO. C-4434						DOCUMENT NOT CONSIDERED FINAL UNLESS ALL SIGNATURES COMPLETED					
REVISIONS											
NO.	BY:	DATE:	NO.	BY:	DATE:	SHEET NO.					
1			3			S-16					
2			4			TOTAL SHEETS 58					