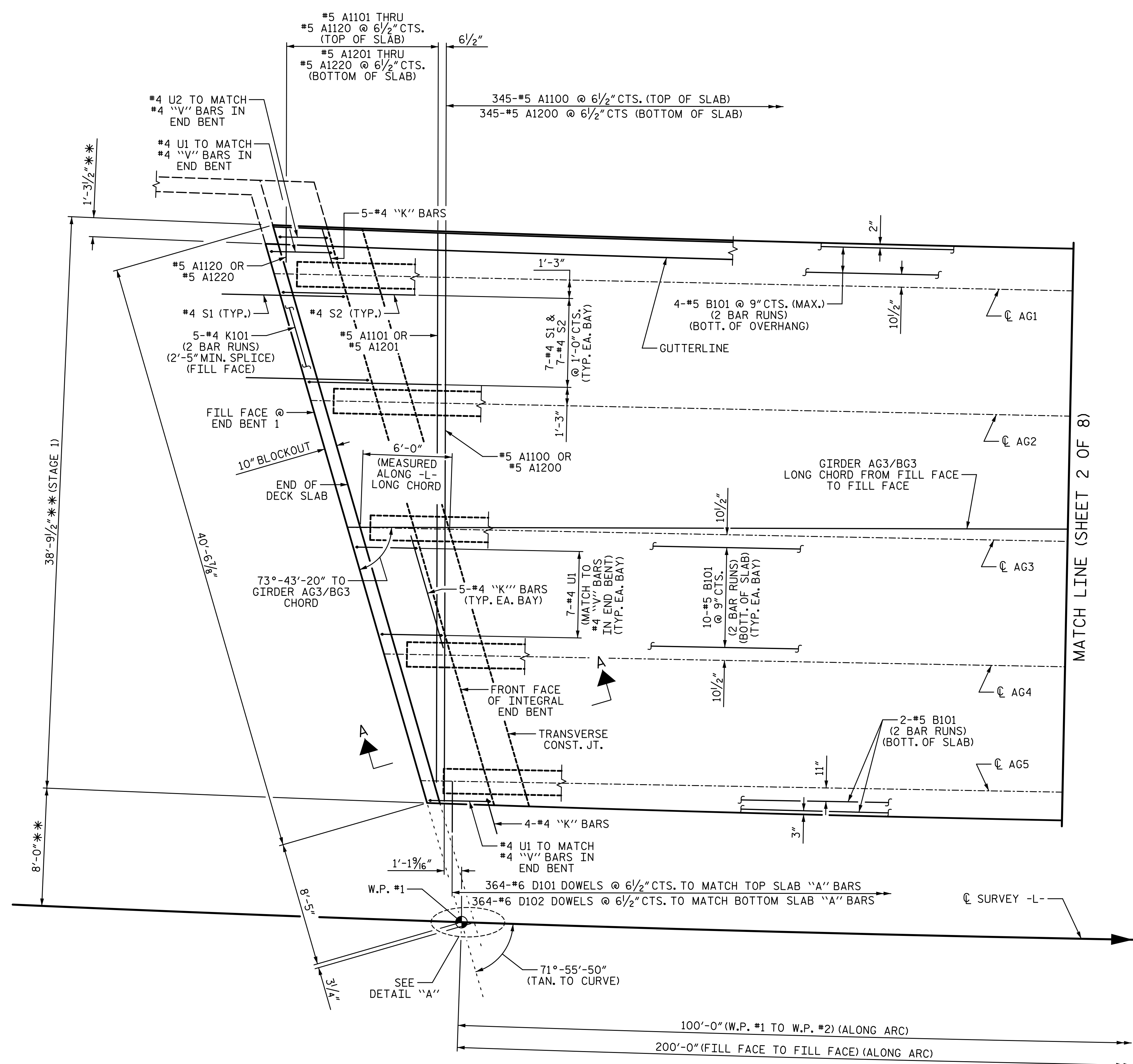


2/7/2023 11:19:20 AM P:\Raleigh\Projects\2018\Division 7 (SEA)\17BP7R142 Guilford 225 (Rehobeth Ch Rd over I-85 Bus)\Structures\Drawings\Final\17BP7R142_SMJ_S_4002225.dgn

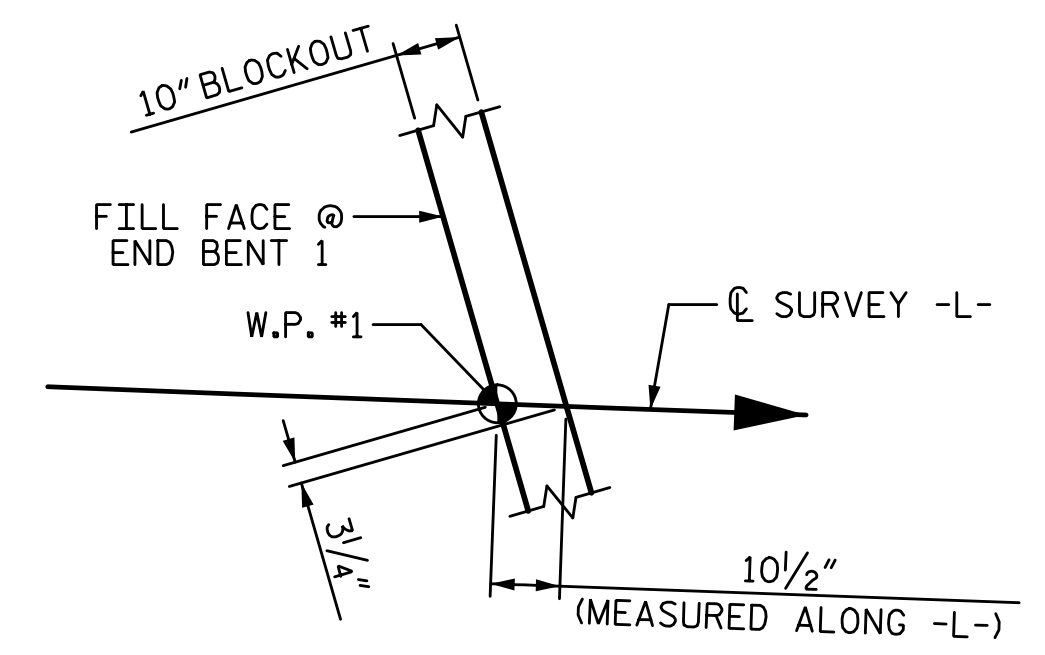


MATCH LINE (SHEET 2 OF 8)

SPAN A PLAN OF SPANS

NOTES:

- FOR SECTION A-A, SEE "SUPERSTRUCTURE TYPICAL SECTION" SHEET 6 OF 6.
- FOR LOCATIONS OF INTERMEDIATE DIAPHRAGMS, SEE "SUPERSTRUCTURE FRAMING PLAN" SHEET.
- SEE "SUPERSTRUCTURE CONCRETE PARAPET" SHEET FOR ADDITIONAL REINFORCING STEEL IN SLAB AND PARAPET.
- FOR POUR SEQUENCE AND LOCATION OF TRANSVERSE CONSTRUCTION JOINTS, SEE "SUPERSTRUCTURE BILL OF MATERIAL" SHEET 1 OF 2.
- "A" BARS AND DOWELS TO BE PLACED PERPENDICULAR TO GIRDER AG3/BG3 LONG CHORD FROM FILL FACE TO FILL FACE.
- FOR "B" BARS IN TOP OF DECK, SEE SHEET 4 OF 8.
- ** RADIAL DIMENSION.

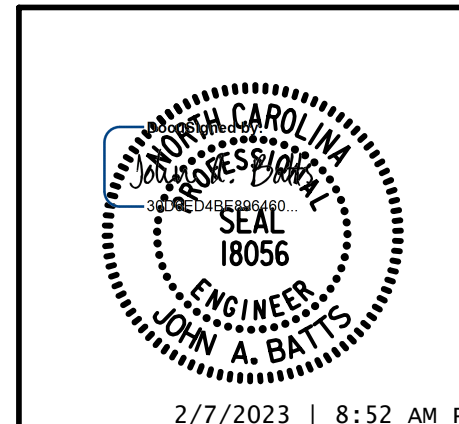


DETAIL "A"

PROJECT NO. BP7.R006.3
GUILFORD COUNTY
 STATION: 18+82.09 -L-

SHEET 1 OF 8

STATE OF NORTH CAROLINA
 DEPARTMENT OF TRANSPORTATION
 RALEIGH
 SUPERSTRUCTURE
 PLAN OF SPANS
 STAGE 1



W WGI
 5640 Dillard Drive, Suite 200
 Cary, NC 27518
 LICENSURE NO. C-4434

DRAWN BY: T. BANKOVICH	DATE: 2-22
CHECKED BY: J.A. BATTS	DATE: 2-22
DESIGN ENGINEER OF RECORD: J.A. BATTS	DATE: 2-22

REVISIONS						SHEET NO.
NO.	BY:	DATE:	NO.	BY:	DATE:	S-15
1			3			TOTAL SHEETS
2			4			58

DOCUMENT NOT CONSIDERED FINAL UNLESS ALL SIGNATURES COMPLETED