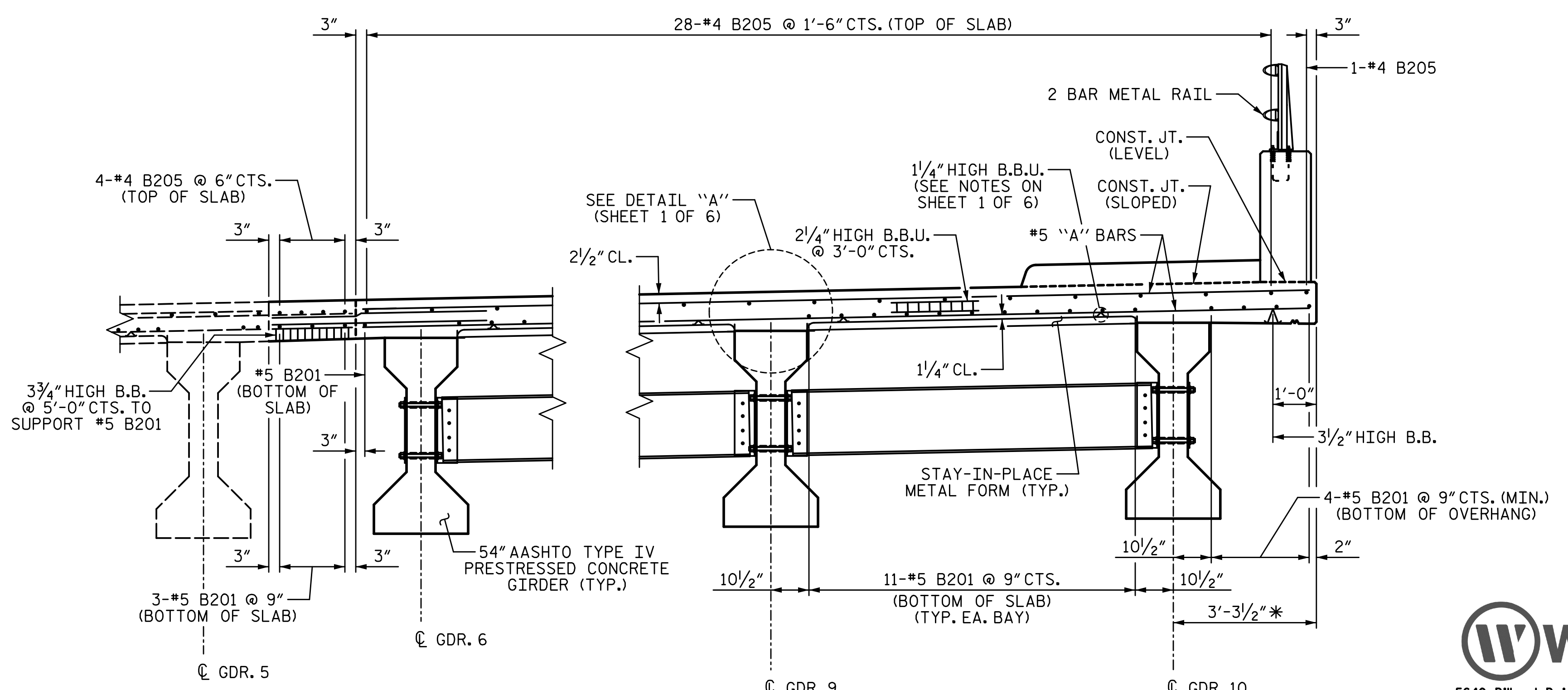
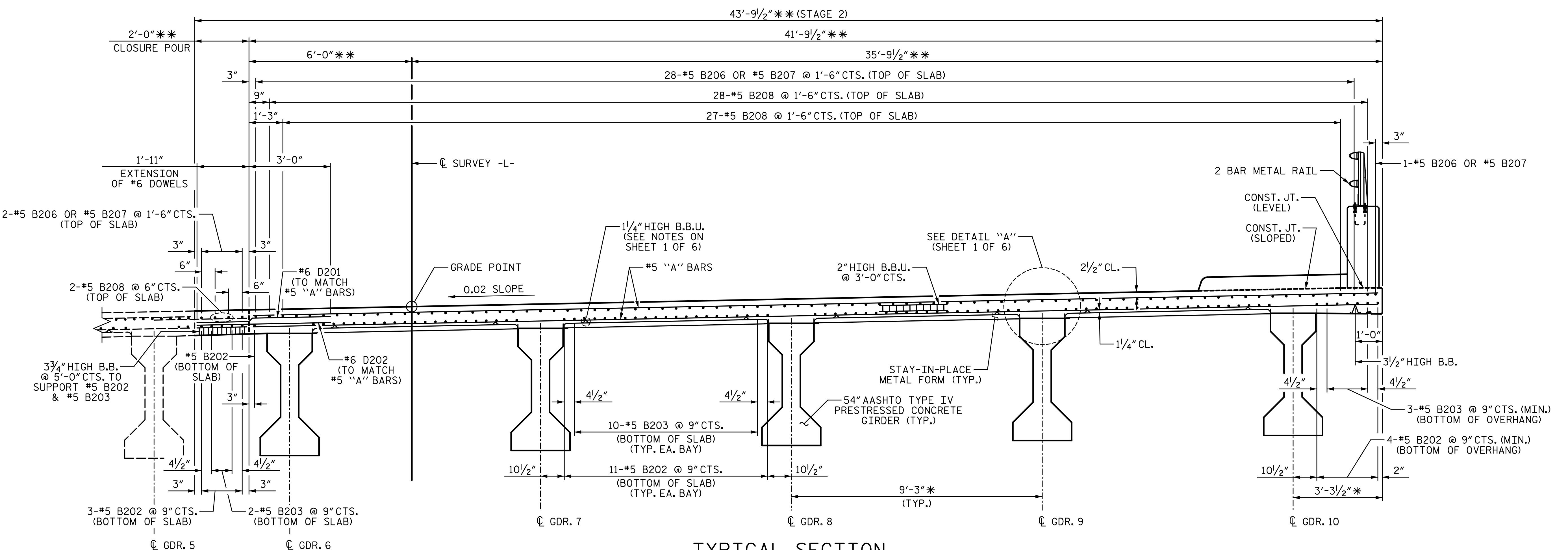
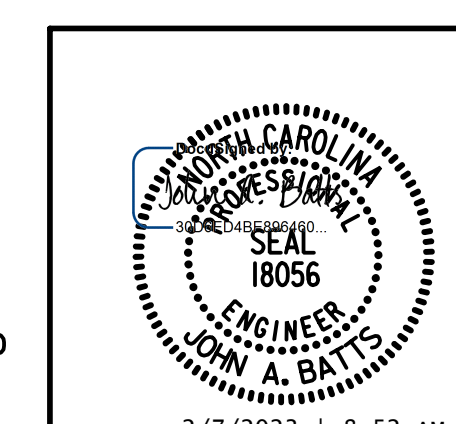


2/7/2023 11:19:19 AM P:\Raleigh\Projects\2018\Division 7 (SEA)\17BP7R142 Guilford 225 (Rehobeth Ch Rd over I-85 Bus)\Structures\Drawings\Final\17BP7R142_SMU_TS_400225.dgn



PROJECT NO. BP7.R006.3
GUILFORD COUNTY
STATION: 18+82.09 -L-
SHEET 5 OF 6

STATE OF NORTH CAROLINA
DEPARTMENT OF TRANSPORTATION
RALEIGH
SUPERSTRUCTURE
TYPICAL SECTION
STAGE 2



W WGI
5640 Dillard Drive, Suite 200
Cary, NC 27518
LICENSURE NO. C-4434

DRAWN BY: T. BANKOVICH DATE: 2-22
CHECKED BY: J.A. BATTS DATE: 2-22
DESIGN ENGINEER OF RECORD: J.A. BATTS DATE: 2-22

REVISIONS				SHEET NO.	
NO.	BY:	DATE:	NO.	BY:	DATE:
1			3		
2			4		

58

**DOCUMENT NOT CONSIDERED FINAL
UNLESS ALL SIGNATURES COMPLETED**