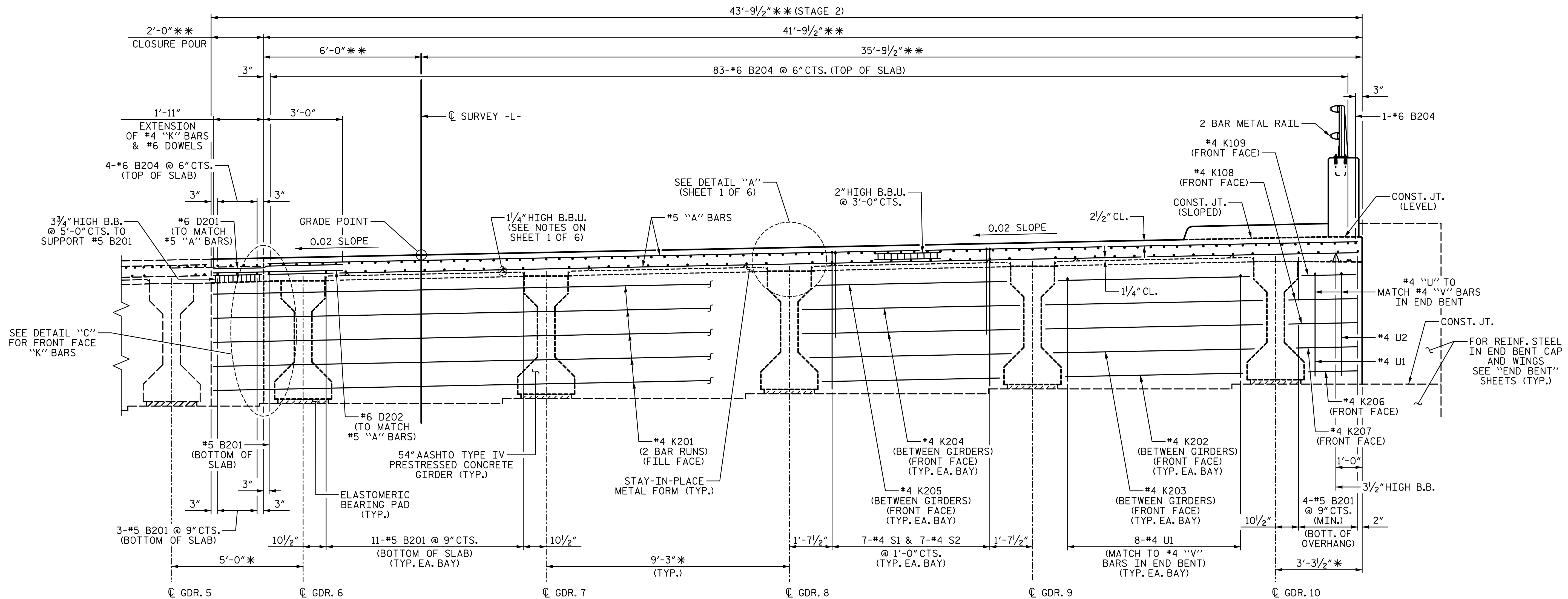
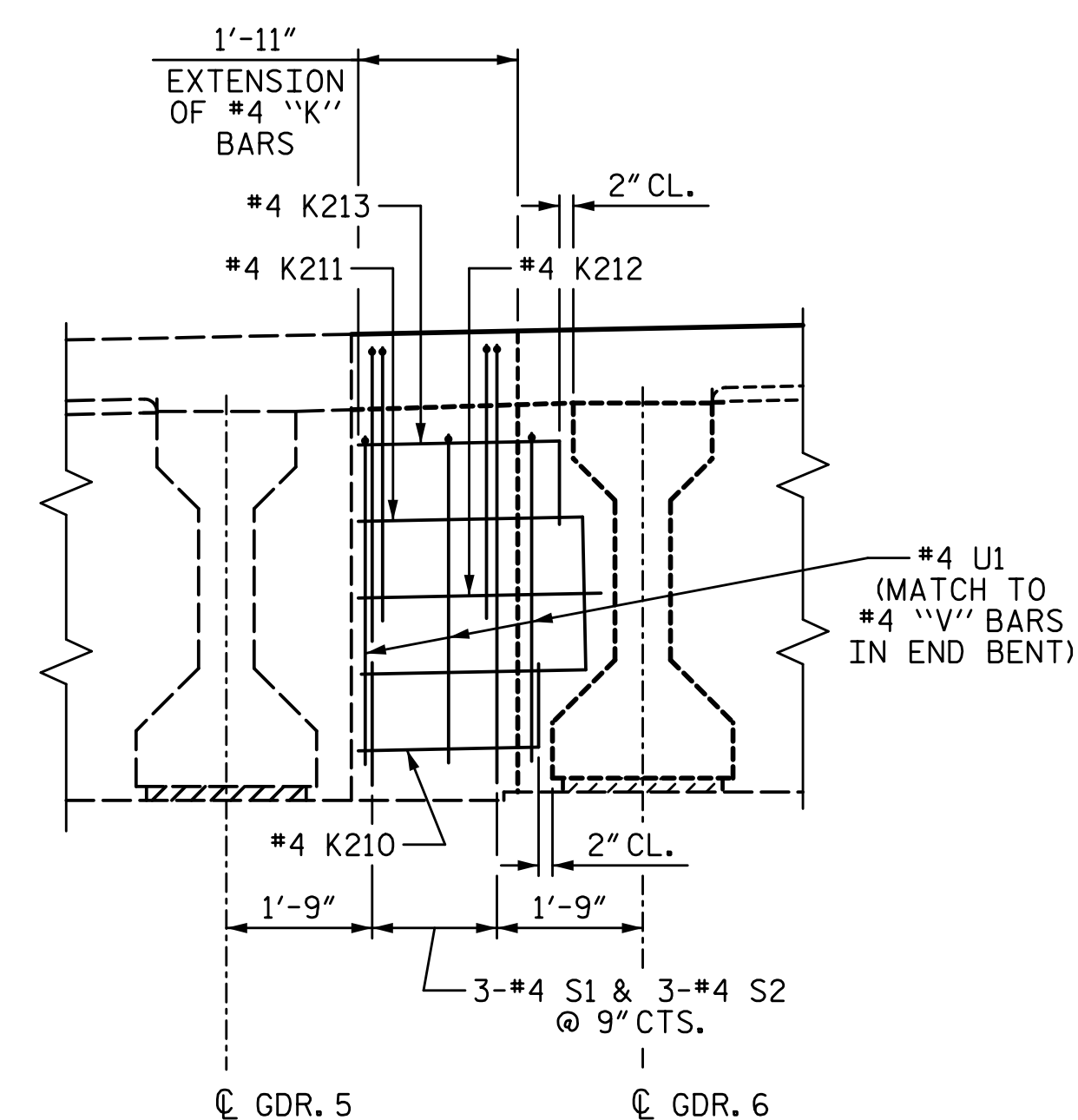


2/7/2023 11:19:18 AM P:\Raleigh\Projects\2018\Division 7 (SEA)\17BP7R142 Gullford 225 (Rehobeth Ch Rd over I-85 Bus)\Structures\Drawings\Final\17BP7R142\_SMU\_TS\_400225.dgn



**TYPICAL SECTION**  
 (SHOWING INTEGRAL END BENT)  
 \* RADIAL DIMENSION THRU W.P.  
 \*\* RADIAL DIMENSION



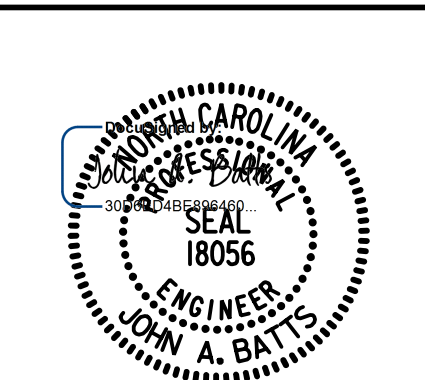
**DETAIL "C"**  
 FRONT FACE REINFORCING STEEL

PROJECT NO. BP7.R006.3  
GUILFORD COUNTY  
 STATION: 18+82.09 -L-  
 SHEET 4 OF 6

STATE OF NORTH CAROLINA  
 DEPARTMENT OF TRANSPORTATION  
 RALEIGH  
 SUPERSTRUCTURE

**TYPICAL SECTION**

STAGE 2



DRAWN BY: T. BANKOVICH	DATE: 2-22
CHECKED BY: J.A. BATTS	DATE: 2-22
DESIGN ENGINEER OF RECORD: J.A. BATTS	DATE: 2-22

REVISIONS						SHEET NO.
NO.	BY:	DATE:	NO.	BY:	DATE:	S-12
1			3			TOTAL SHEETS
2			4			58

**DOCUMENT NOT CONSIDERED FINAL  
 UNLESS ALL SIGNATURES COMPLETED**