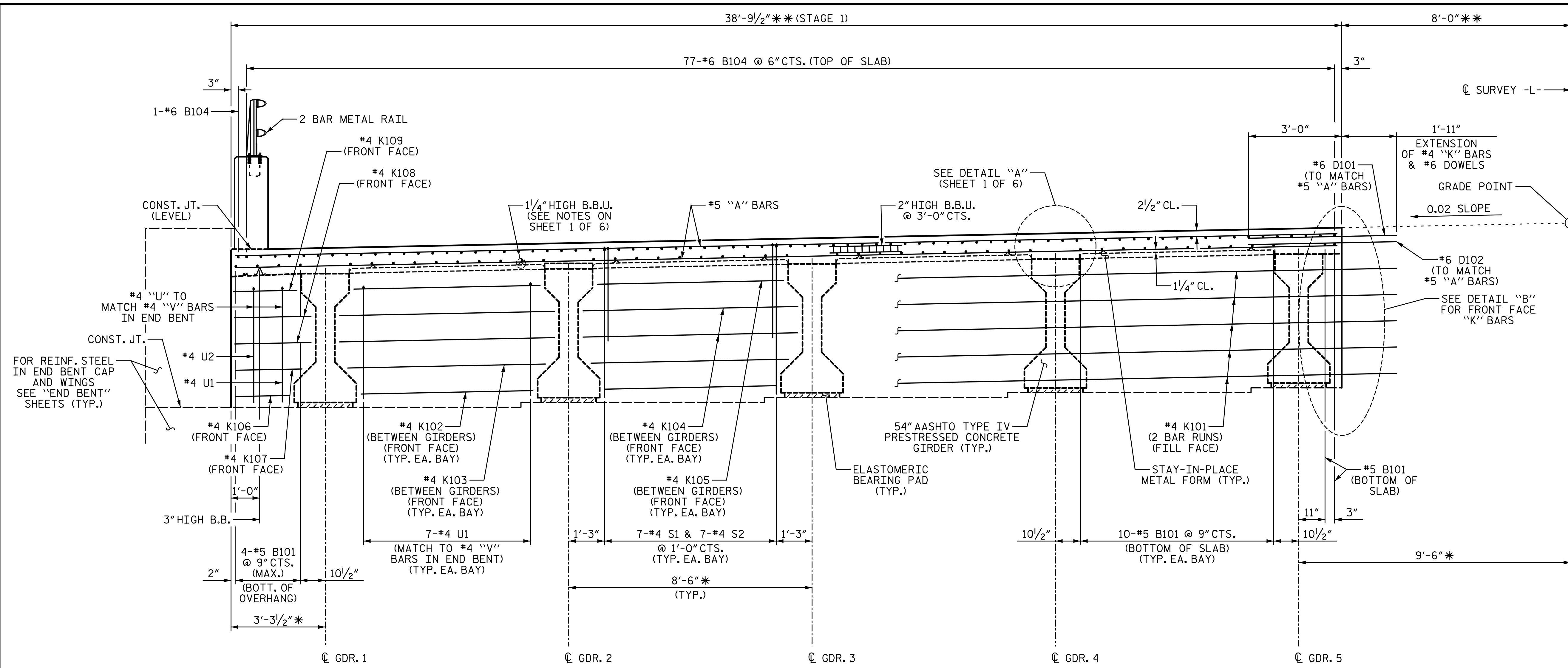


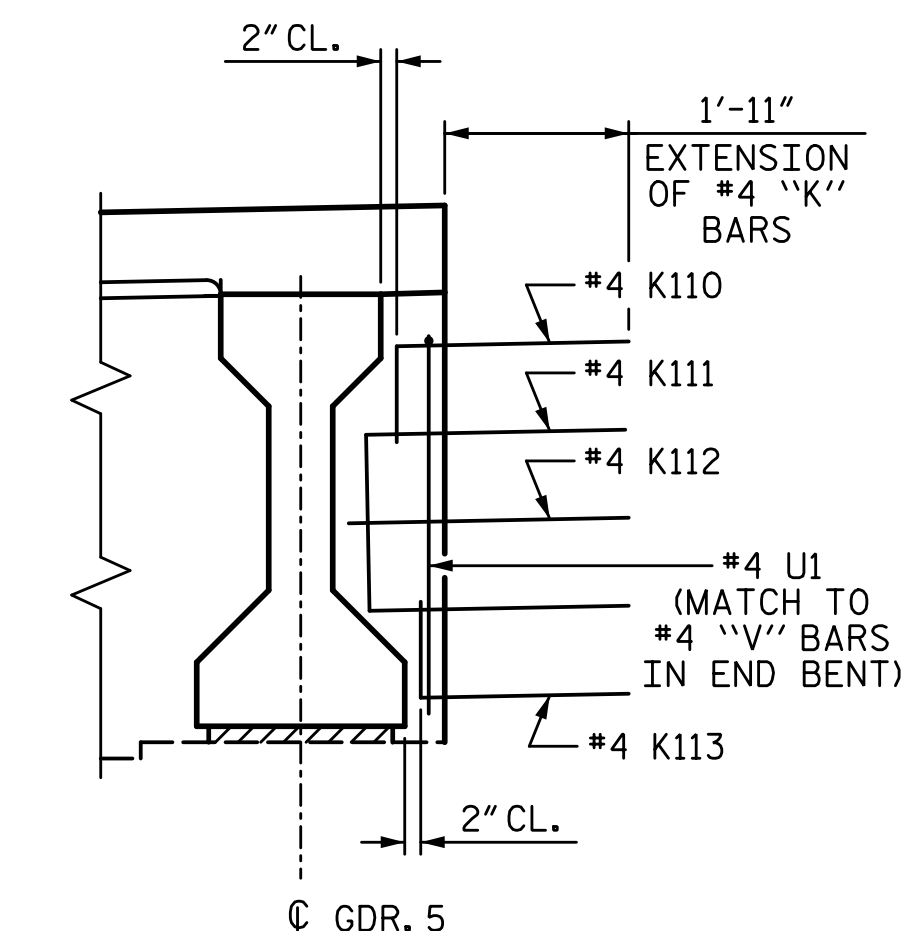
2/7/2023 11:19:17 AM P:\Raleigh\Projects\2018\Division 7 (SEA)\17BP7R142 Gullford 225 (Rehobeth Ch Rd over I-85 Bus)\Structures\Drawings\Final\17BP7R142_SMU_TS_400225.dgn



NOTES:
 DOWELS SHALL BE PLACED IN THE SAME HORIZONTAL PLANE AS THE TOP AND BOTTOM SLAB REINFORCING STEEL.

TYPICAL SECTION
 (SHOWING INTEGRAL END BENT)

* RADIAL DIMENSION THRU W.P.
 ** RADIAL DIMENSION



DETAIL "B"
 FRONT FACE REINFORCING STEEL

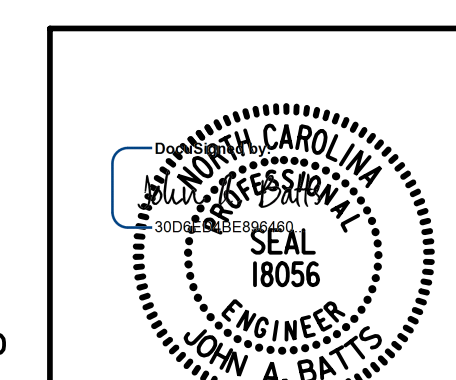
PROJECT NO. BP7.R006.3
GUILFORD COUNTY
 STATION: 18+82.09 -L-

SHEET 2 OF 6

STATE OF NORTH CAROLINA
 DEPARTMENT OF TRANSPORTATION
 RALEIGH
 SUPERSTRUCTURE

TYPICAL SECTION

STAGE 1



DRAWN BY: T. BANKOVICH	DATE: 2-22
CHECKED BY: J.A. BATTS	DATE: 2-22
DESIGN ENGINEER OF RECORD: J.A. BATTS	DATE: 2-22

REVISIONS						SHEET NO.
NO.	BY:	DATE:	NO.	BY:	DATE:	S-10
1			3			TOTAL SHEETS
2			4			58

DOCUMENT NOT CONSIDERED FINAL
UNLESS ALL SIGNATURES COMPLETED