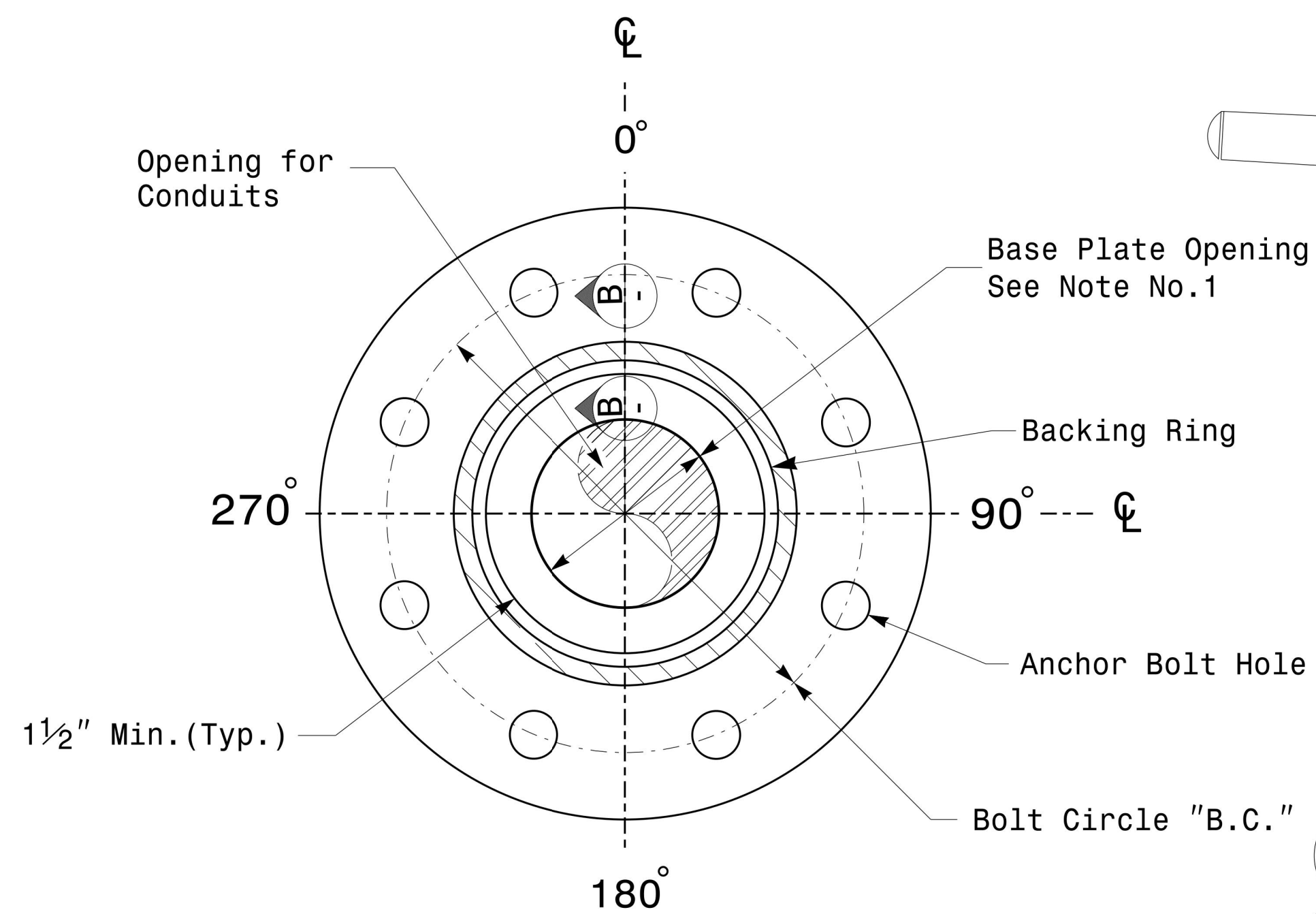
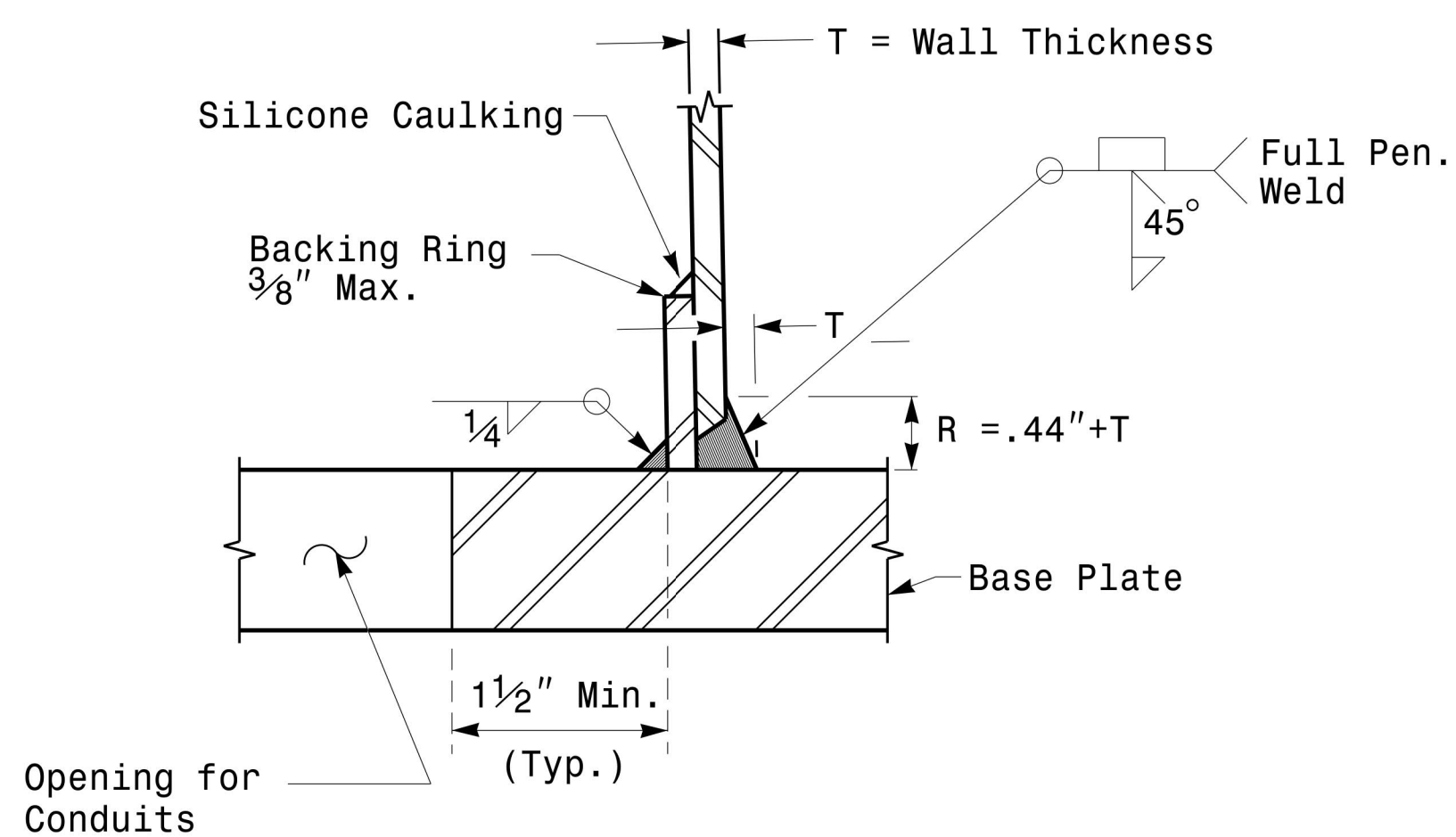


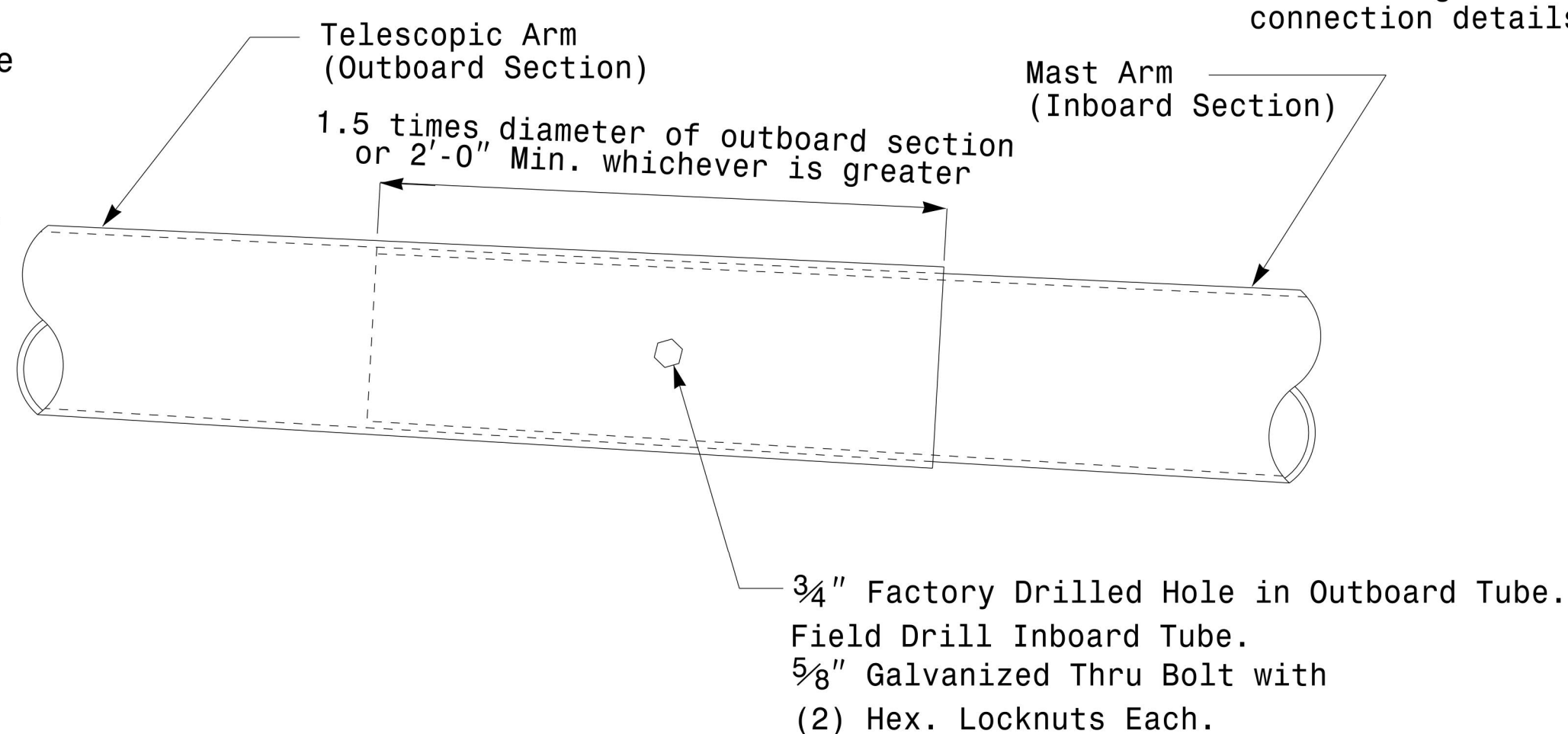
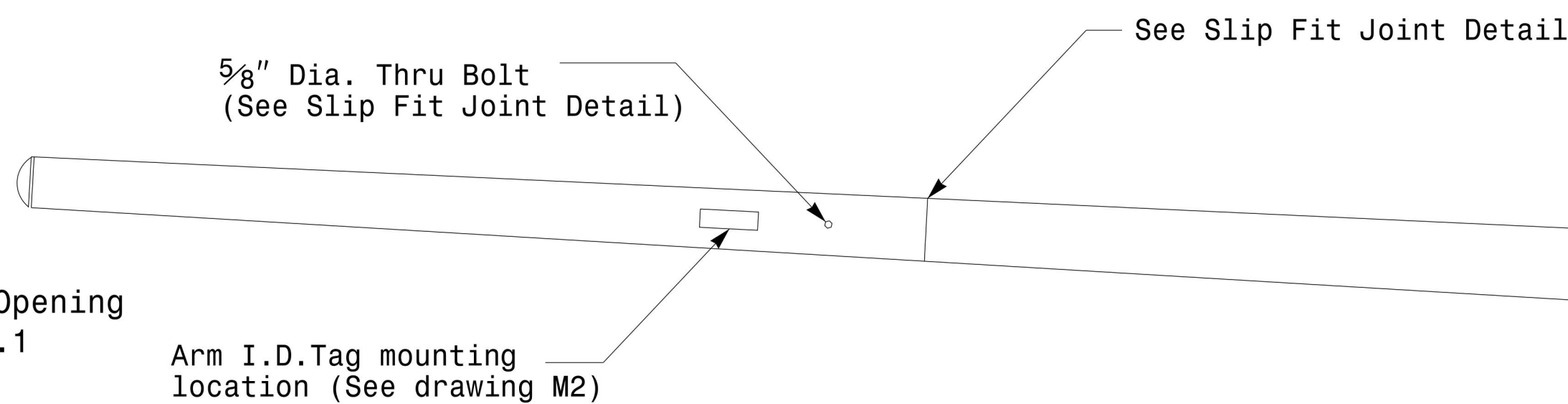
Note:
 1. Opening in pole base plate shall be equal to pole base inside diameter minus $3\frac{1}{2}$ " but shall not be less than $8\frac{1}{2}$ ".



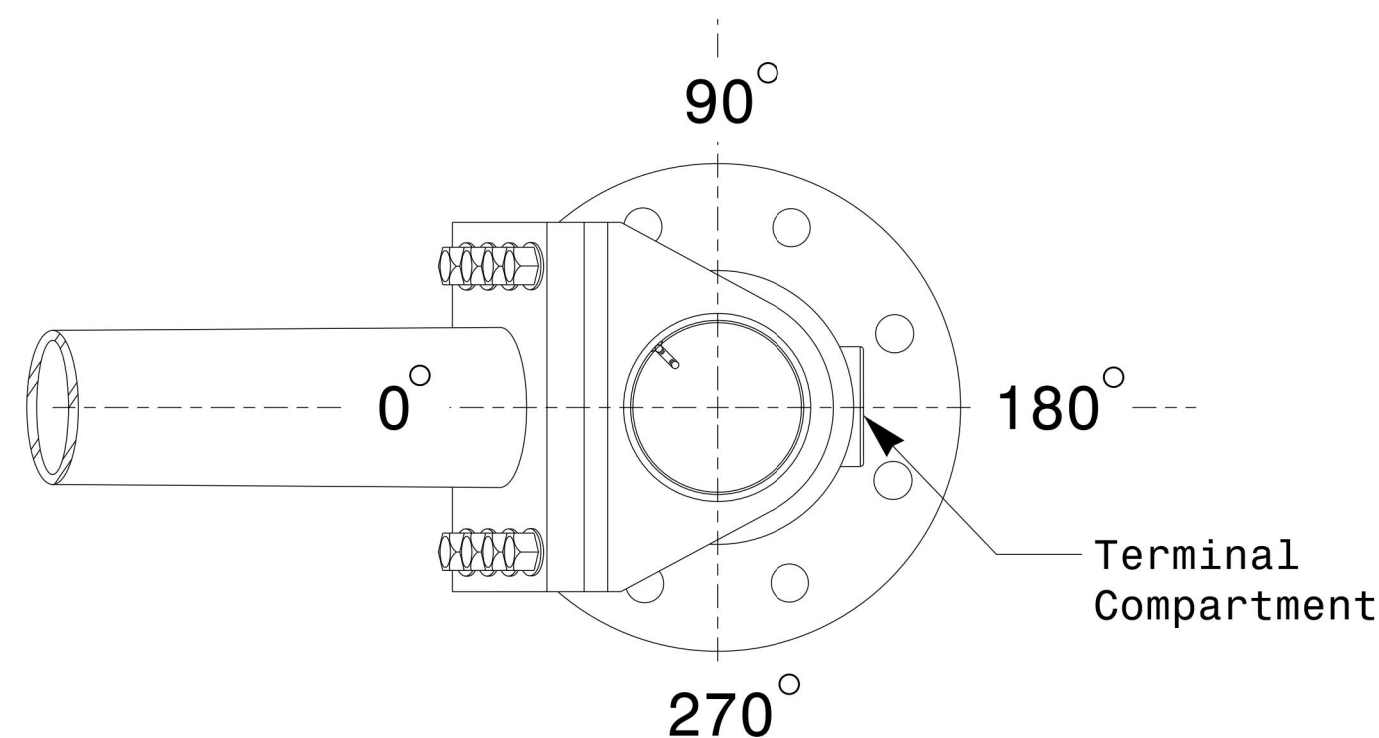
Section A-A
 Pole Base Plate Details



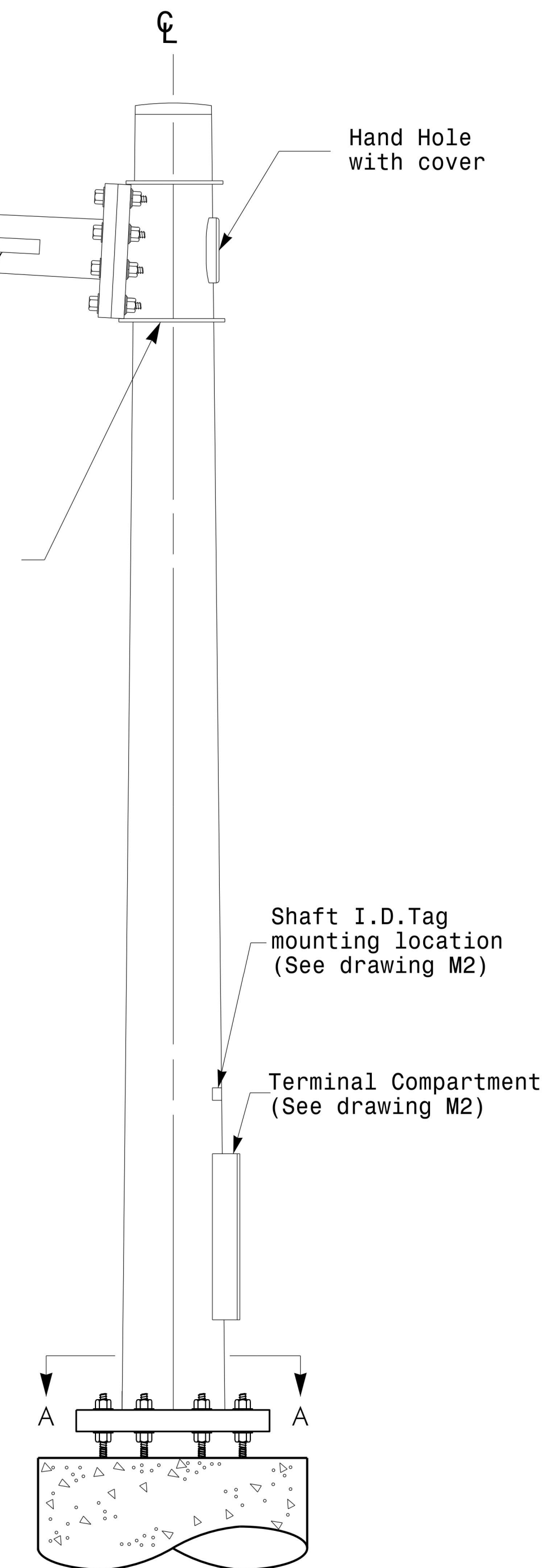
Section B-B
 (Pole Attachment to Base Plate)
 Full-Penetration Groove Weld Detail



Slip Fit Joint Detail for Mast Arm



Mast Arm Radial Orientation



Mast Arm Pole

Fabrication Details - Mast Arm Poles

	Typical Fabrication Details For Mast Arm Poles		
	PLAN DATE: OCTOBER 2017 PREPARED BY: N. BITTING	DESIGNED BY: K.C. DURIGON REVIEWED BY: D.C. SARKAR	
SCALE: 0 NA NONE	DocuSigned by: <i>Dinesh C. Sarkar</i> 10/11/2017		SEAL DATE

11-OCT-2017 08:33 136504115 Signal Design Section Design Section Eastern RegionM4 Sheets20162014 Sig.M4 Std. Fabrication Details-Mast Arm Poles.dgn