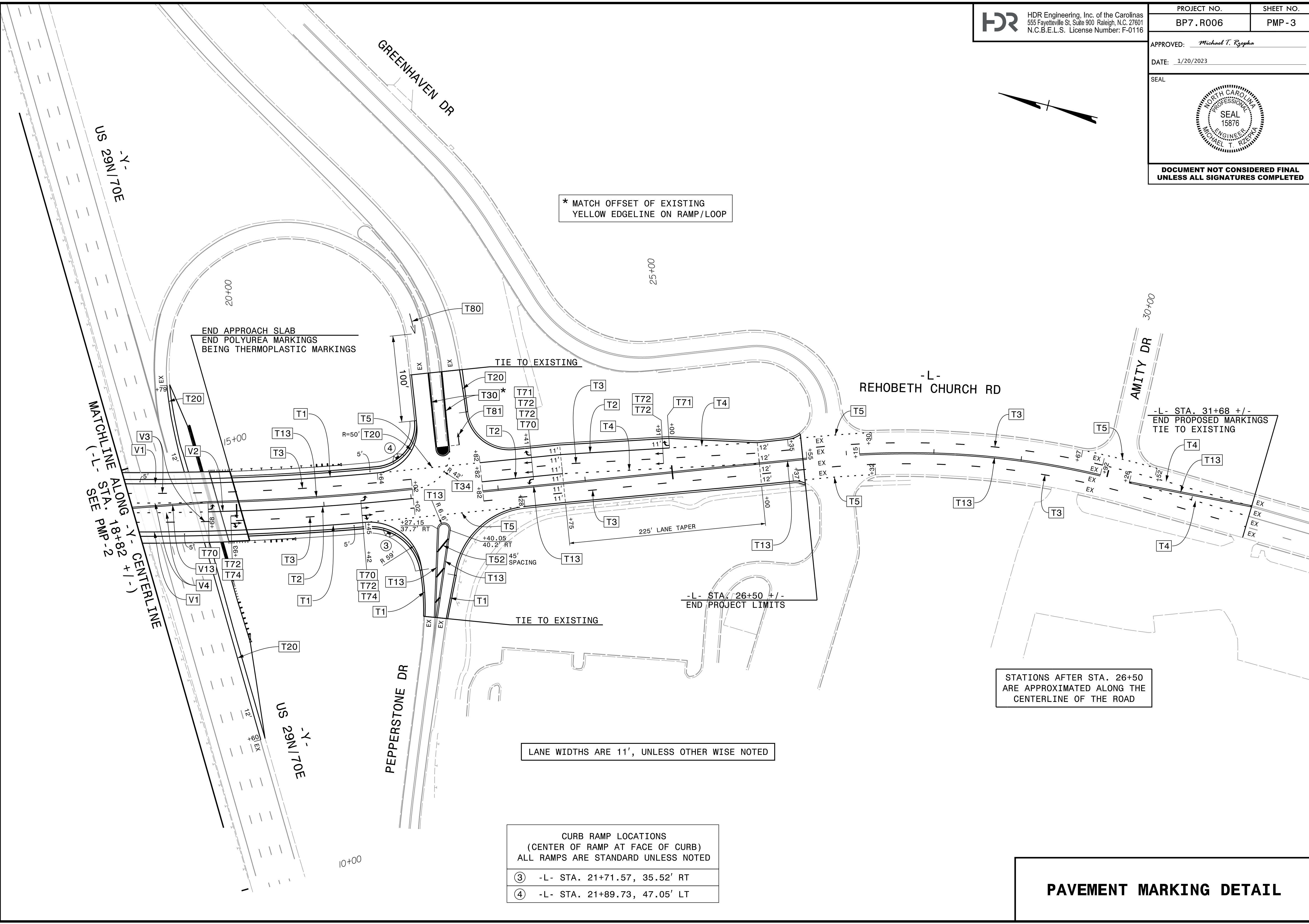
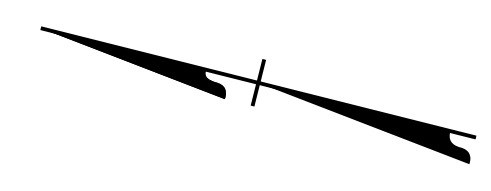


PROJECT NO.	SHEET NO.
BP7.R006	PMP-3
APPROVED: <i>Michael T. Rzepka</i>	
DATE: 1/20/2023	
SEAL	
<b>DOCUMENT NOT CONSIDERED FINAL UNLESS ALL SIGNATURES COMPLETED</b>	



\* MATCH OFFSET OF EXISTING  
YELLOW EDGELINE ON RAMP/LOOP

END APPROACH SLAB  
END POLYUREA MARKINGS  
BEING THERMOPLASTIC MARKINGS

TIE TO EXISTING

-L-  
REHOBETH CHURCH RD

-L- STA. 31+68 +/-  
END PROPOSED MARKINGS  
TIE TO EXISTING

-L- STA. 26+50 +/-  
END PROJECT LIMITS

TIE TO EXISTING

STATIONS AFTER STA. 26+50  
ARE APPROXIMATED ALONG THE  
CENTERLINE OF THE ROAD

LANE WIDTHS ARE 11', UNLESS OTHER WISE NOTED

CURB RAMP LOCATIONS  
(CENTER OF RAMP AT FACE OF CURB)  
ALL RAMPS ARE STANDARD UNLESS NOTED

- ③ -L- STA. 21+71.57, 35.52' RT
- ④ -L- STA. 21+89.73, 47.05' LT

# PAVEMENT MARKING DETAIL

PLOT DRIVER: NCDOT\_color\_eng\_50.plt  
 USER: CHARNDEN  
 FILE: p:\dwg\hdr\users\01\hdr\US\_East\01\Documents\5705\1012\116\6\_0\_CAD\_BITMAP\6.2\_WIP\Traffic\Delinecton\400225\_PMP\_PMP03.dgn  
 PENTABLE: NCDOT\_PMP.tbl  
 DATE: 1/17/2023  
 TIME: 10:32:49 AM