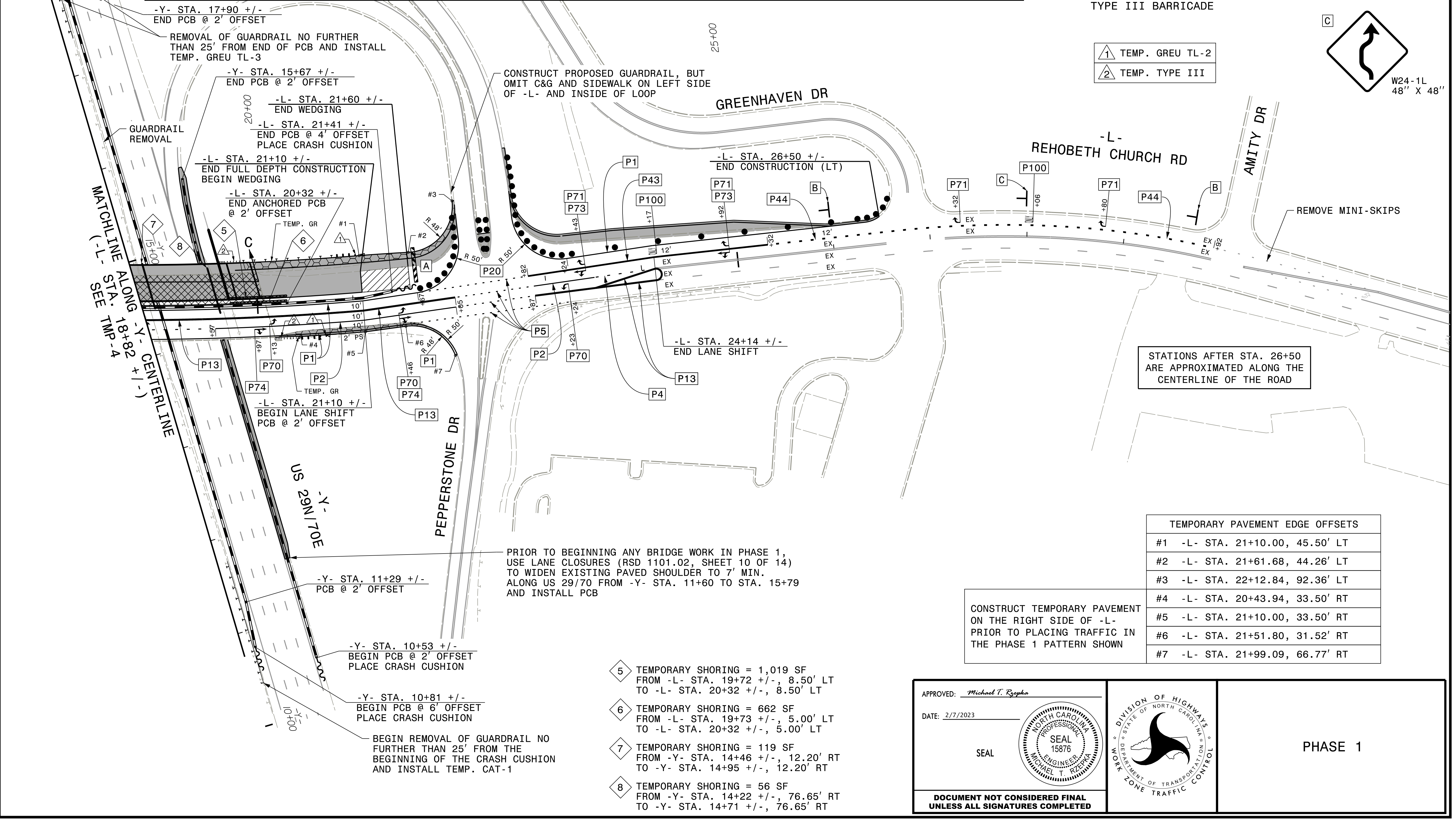
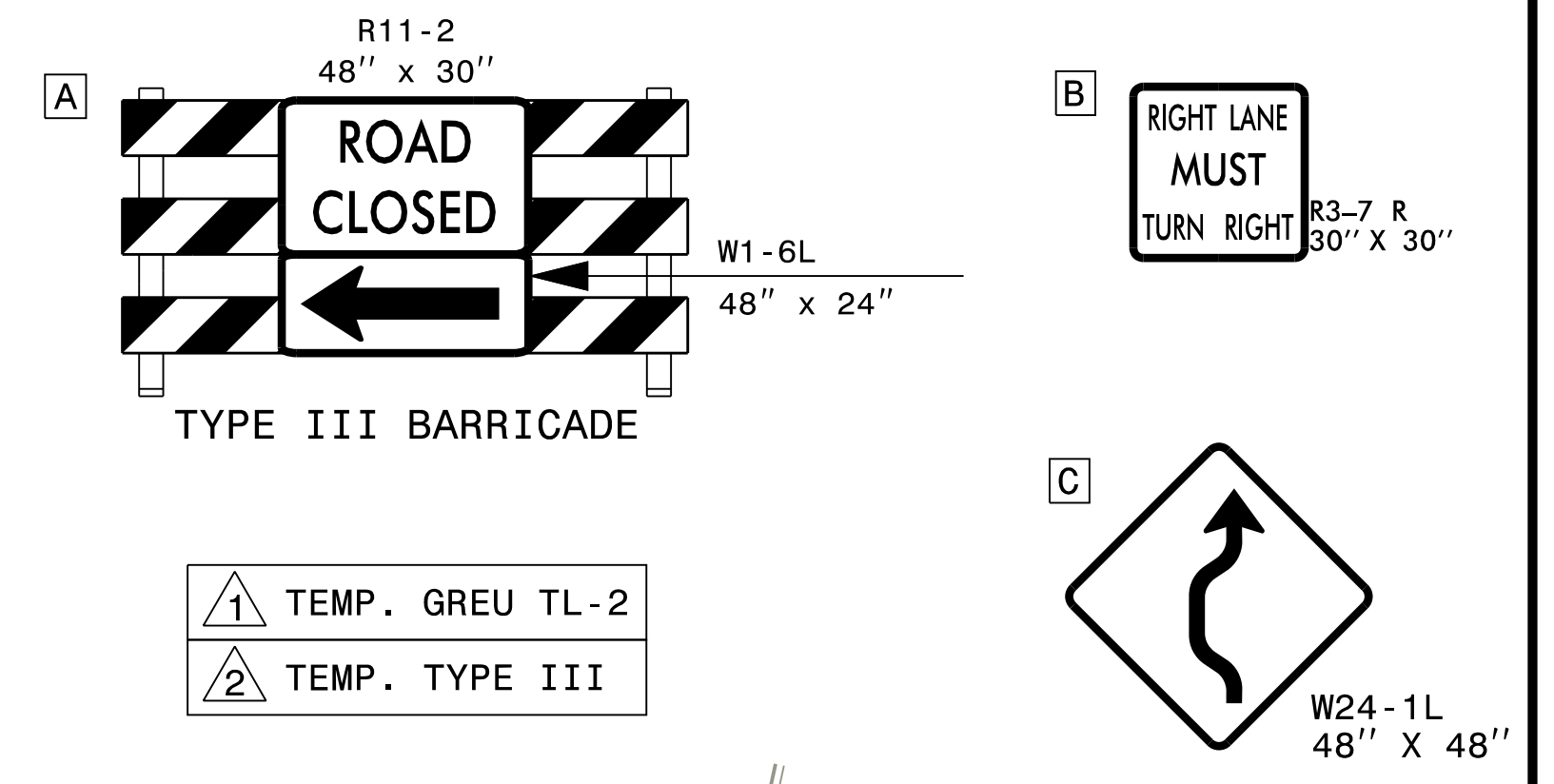
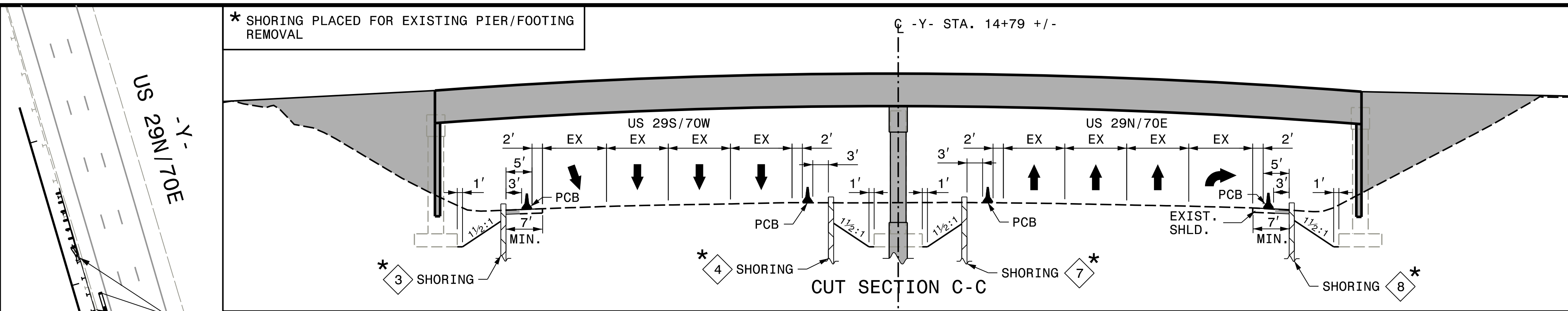


PROJ. REFERENCE NO. BP7.R006	SHEET NO. TMP-5
---------------------------------	--------------------

HDR
HDR Engineering, Inc. of the Carolinas
555 Fayetteville St, Suite 900 Raleigh, N.C. 27601
N.C.B.E.L.S. License Number: F-0116



* SHORING PLACED FOR EXISTING PIER/FOOTING REMOVAL

-Y- STA. 17+90 +/-
END PCB @ 2' OFFSET
REMOVAL OF GUARDRAIL NO FURTHER THAN 25' FROM END OF PCB AND INSTALL TEMP. GREU TL-3

-Y- STA. 15+67 +/-
END PCB @ 2' OFFSET
-L- STA. 21+60 +/-
END WEDGING

-L- STA. 21+41 +/-
END PCB @ 4' OFFSET
PLACE CRASH CUSHION

-L- STA. 21+10 +/-
END FULL DEPTH CONSTRUCTION
BEGIN WEDGING

-L- STA. 20+32 +/-
END ANCHORED PCB @ 2' OFFSET

-L- STA. 21+10 +/-
BEGIN LANE SHIFT
PCB @ 2' OFFSET

-Y- STA. 11+29 +/-
PCB @ 2' OFFSET

-Y- STA. 10+53 +/-
BEGIN PCB @ 2' OFFSET
PLACE CRASH CUSHION

-Y- STA. 10+81 +/-
BEGIN PCB @ 6' OFFSET
PLACE CRASH CUSHION

BEGIN REMOVAL OF GUARDRAIL NO FURTHER THAN 25' FROM THE BEGINNING OF THE CRASH CUSHION AND INSTALL TEMP. CAT-1

-L- STA. 24+14 +/-
END LANE SHIFT

-L- STA. 26+50 +/-
END CONSTRUCTION (LT)

PRIOR TO BEGINNING ANY BRIDGE WORK IN PHASE 1, USE LANE CLOSURES (RSD 1101.02, SHEET 10 OF 14) TO WIDEN EXISTING PAVED SHOULDER TO 7' MIN. ALONG US 29/70 FROM -Y- STA. 11+60 TO STA. 15+79 AND INSTALL PCB

5 TEMPORARY SHORING = 1,019 SF FROM -L- STA. 19+72 +/-, 8.50' LT TO -L- STA. 20+32 +/-, 8.50' LT

6 TEMPORARY SHORING = 662 SF FROM -L- STA. 19+73 +/-, 5.00' LT TO -L- STA. 20+32 +/-, 5.00' LT

7 TEMPORARY SHORING = 119 SF FROM -Y- STA. 14+46 +/-, 12.20' RT TO -Y- STA. 14+95 +/-, 12.20' RT

8 TEMPORARY SHORING = 56 SF FROM -Y- STA. 14+22 +/-, 76.65' RT TO -Y- STA. 14+71 +/-, 76.65' RT

TEMPORARY PAVEMENT EDGE OFFSETS	
#1	-L- STA. 21+10.00, 45.50' LT
#2	-L- STA. 21+61.68, 44.26' LT
#3	-L- STA. 22+12.84, 92.36' LT
#4	-L- STA. 20+43.94, 33.50' RT
#5	-L- STA. 21+10.00, 33.50' RT
#6	-L- STA. 21+51.80, 31.52' RT
#7	-L- STA. 21+99.09, 66.77' RT

CONSTRUCT TEMPORARY PAVEMENT ON THE RIGHT SIDE OF -L- PRIOR TO PLACING TRAFFIC IN THE PHASE 1 PATTERN SHOWN

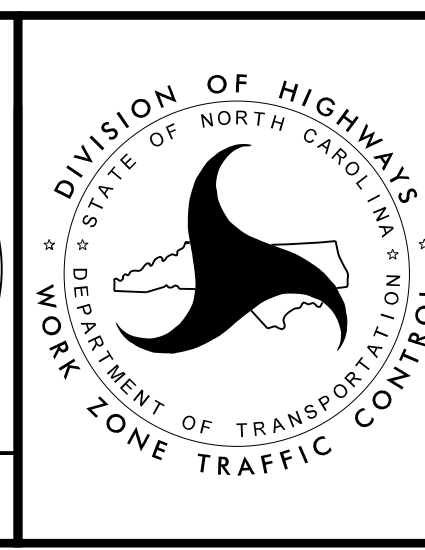
PLOT DRIVER: NCDOT_pdf_color_eng_50.pit
 USER: CHARNDEN
 FILE: p:\p\hmr\usesds\04\HDR_US_East_01\Documents\5705\10127116\6.0_CAD_BITMAP\6.2_WIP\TrafficControl\CPA400225-TC_TMP05.dgn
 REVISIONS
 PENTABLE: NCDOT_tcp.tbl
 TIME: 1:53:31 PM
 DATE: 2/7/2023

APPROVED: *Michael T. Rzepka*

DATE: 2/7/2023

SEAL

DOCUMENT NOT CONSIDERED FINAL UNLESS ALL SIGNATURES COMPLETED



PHASE 1

STATE OF NORTH CAROLINA
DEPARTMENT OF TRANSPORTATION
DIVISION OF HIGHWAYS
WORK ZONE TRAFFIC CONTROL