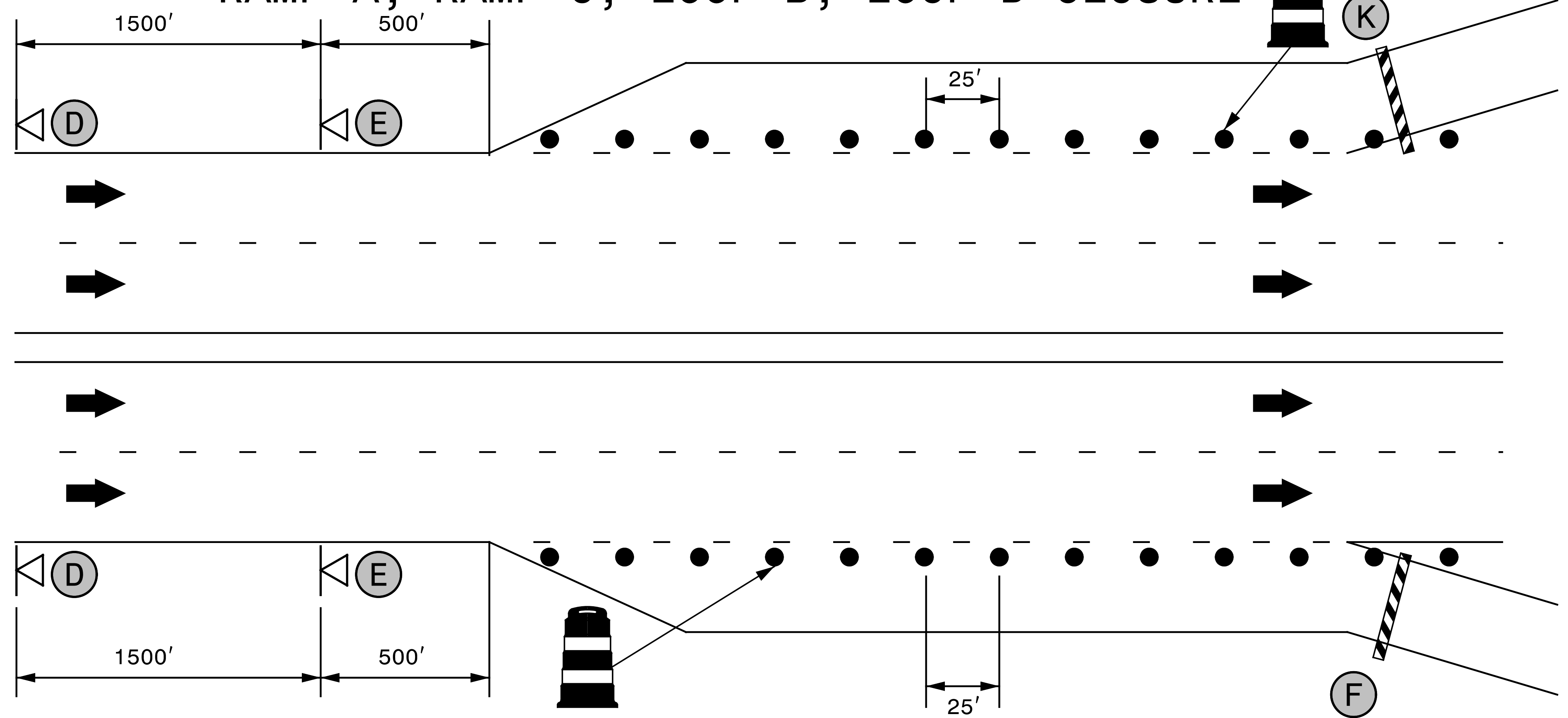


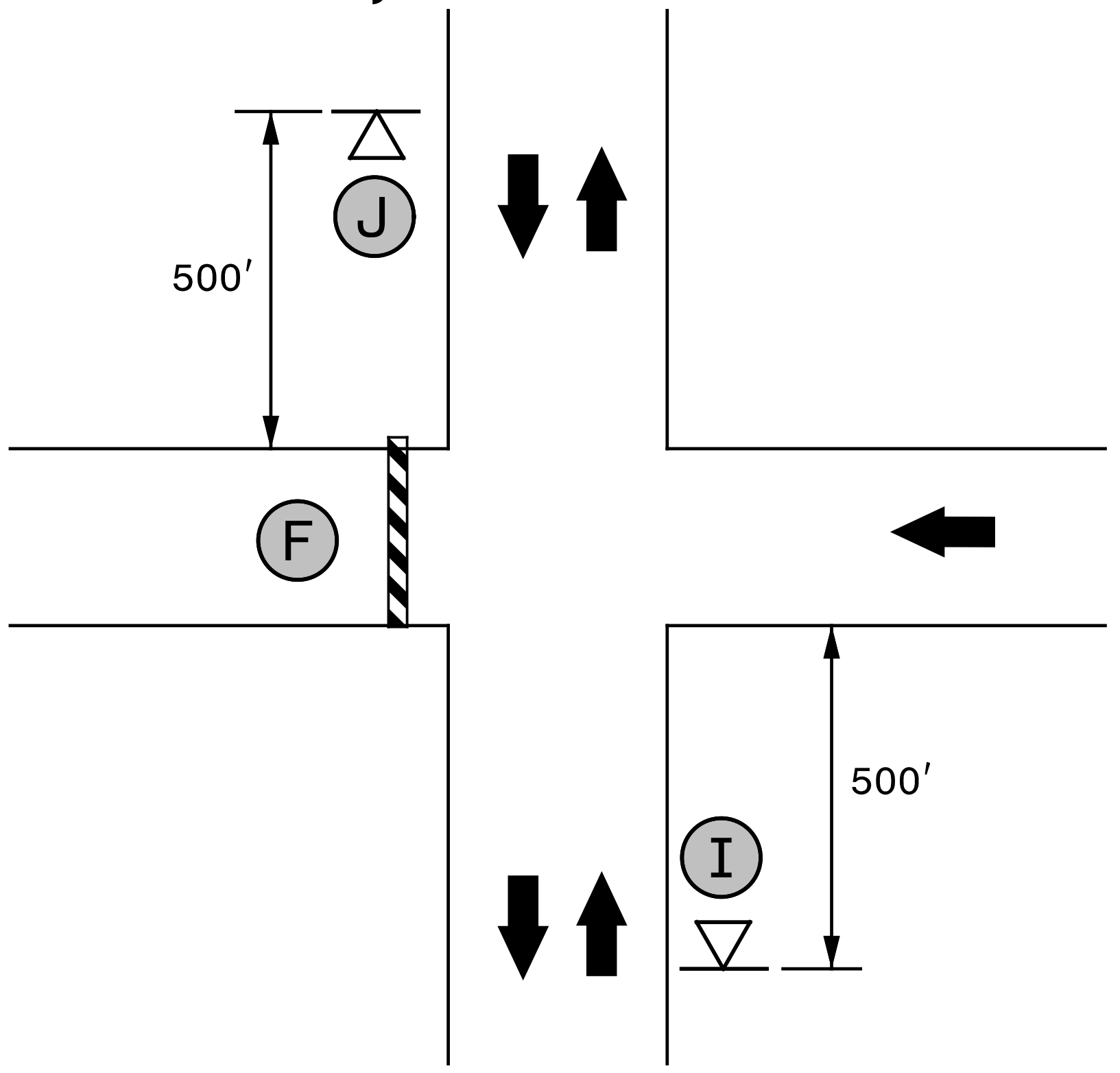
RAMP A, RAMP C, LOOP B, LOOP D CLOSURE



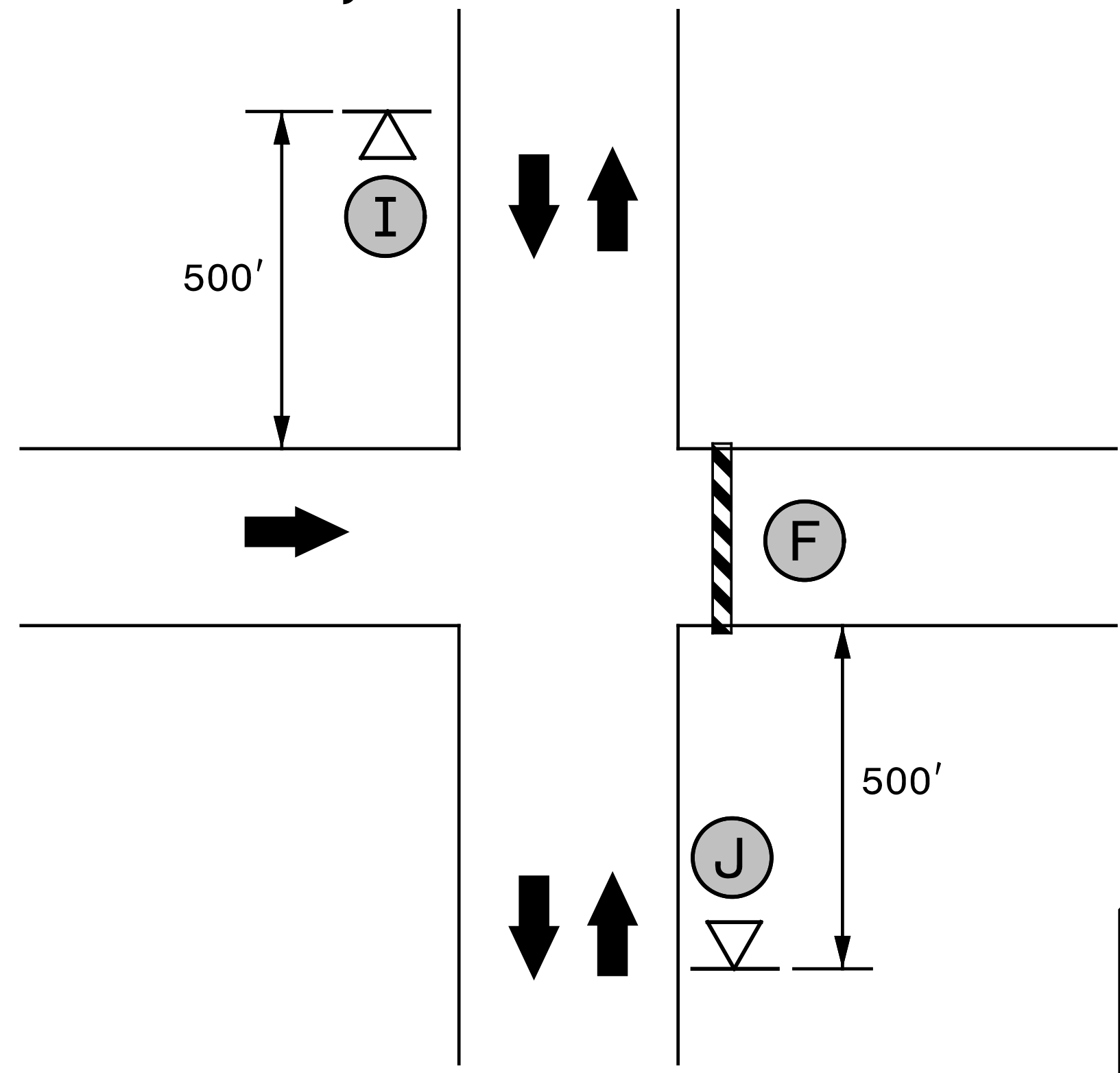
LEFT EXITING RAMP

RIGHT EXITING RAMP

RAMP B, LOOP C CLOSURE



RAMP D, LOOP A CLOSURE

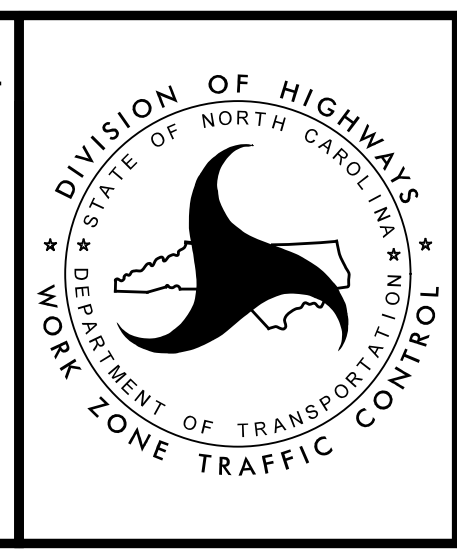


NOTE: SEE TMP-3A FOR SIGN LEGEND

APPROVED: Steve Miller
DocuSigned by:
Steve Miller
9f808c15cEEB48...

DATE: _____

SEAL



RAMP
CLOSURE
TYPICAL

SEPI

1 Glenwood Avenue
 Raleigh, NC 27603
 Tel: 919.789.9977
 Fax: 919.789.9591
 License: C-2197