



STATE OF NORTH CAROLINA  
DEPARTMENT OF TRANSPORTATION

ROY COOPER  
GOVERNOR

J. ERIC BOYETTE  
SECRETARY

September 28, 2021

MEMORANDUM TO: David Stutts, PE  
Structures Project Engineer  
Structures Management Unit

FROM: Craig Haden  
GeoEnvironmental Project Manager  
GeoEnvironmental Section  
Geotechnical Engineering Unit

TIP NO: BR-0073  
WBS: 67073.1.1  
COUNTY: COLUMBUS  
DIVISION: 6  
DESCRIPTION: Replace Bridge 230005 on US 76 over Gapway Swamp

SUBJECT: **Pre-Scoping Comments**

DocuSigned by:  
*Craig Haden*  
AE4AE3FF131F404...

The GeoEnvironmental Section performed a records search of readily available information for the given project study area to identify known and potential sites of concern. No sites of concern were identified within the project area. If the project limit changes, please let us know, so we can reevaluate the study area.

cc:  
John Pilipchuk, LG, PE, State Geotechnical Engineer  
Brian Hanks, PE, State Structures Engineer  
Brent Hall, Locations and Surveys  
Byron Sanders, Jr., PE, State Utilities Manager  
William Marsh PE, Division Construction Engineer  
Kaye Baggett, Division Right of Way Agent  
David Hering, LG, PE, Geotechnical Regional Manager  
Dean Argenbright, LG, Regional Geological Engineer  
Neal Strickland, State Negotiator  
[row-notify@ncdot.gov](mailto:row-notify@ncdot.gov)  
[roadwaydesign@ncdot.gov](mailto:roadwaydesign@ncdot.gov)  
[hydraulics\\_notify@ncdot.gov](mailto:hydraulics_notify@ncdot.gov)

File

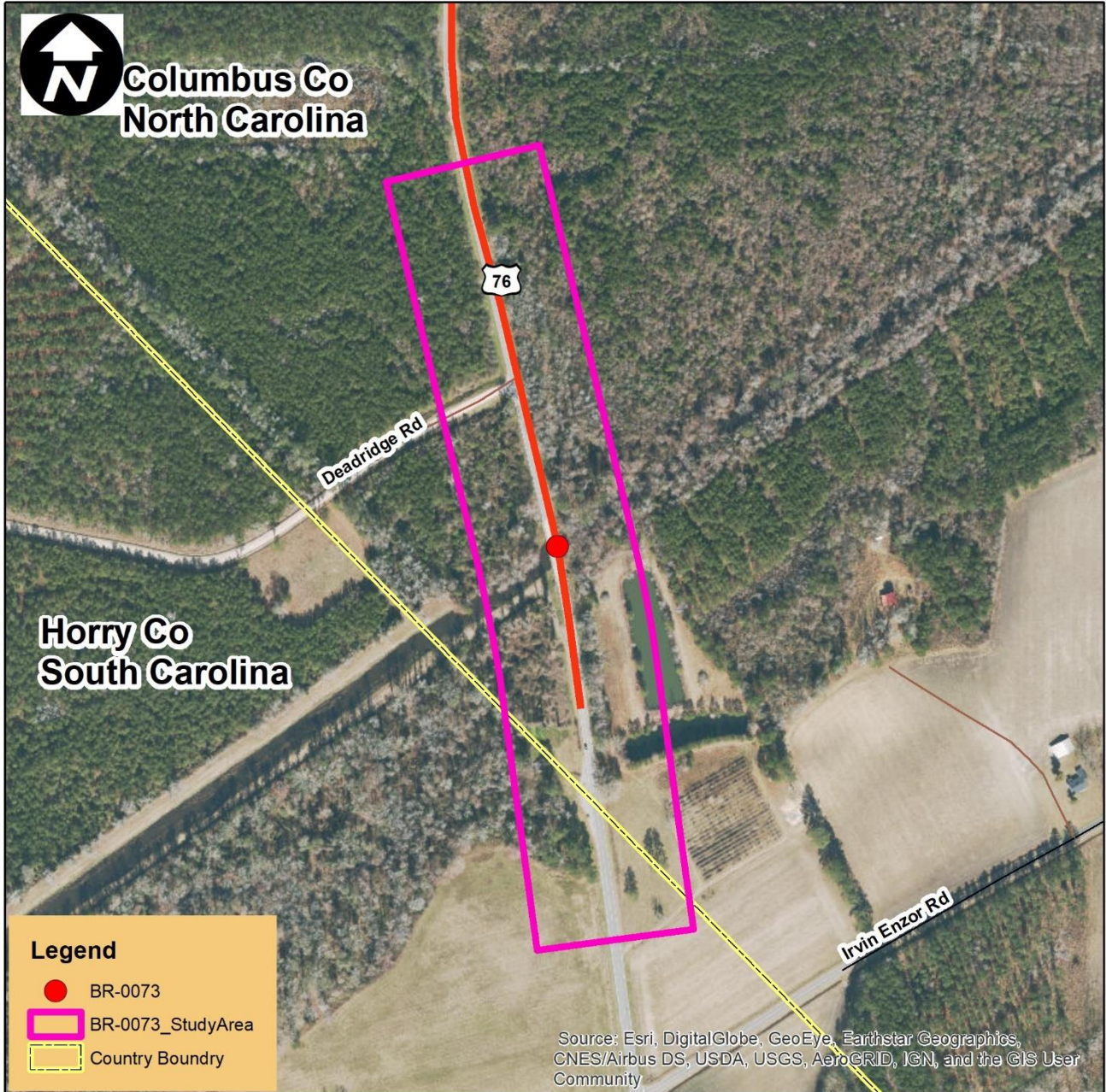
Mailing Address:  
NC DEPARTMENT OF TRANSPORTATION  
GEOTECHNICAL ENGINEERING UNIT  
1589 MAIL SERVICE CENTER  
RALEIGH NC 27699-1589

Telephone: 919-707-6850  
Fax: 919-250-4237  
Customer Service: 1-877-368-4968

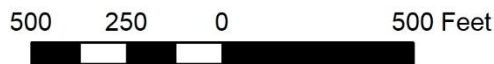
Website: [www.ncdot.gov](http://www.ncdot.gov)

Location:  
CENTURY CENTER COMPLEX  
ENTRANCE B-2  
1020 BIRCH RIDGE DRIVE  
RALEIGH NC

**Appendix A**  
**Location of GeoEnvironmental Sites of Concern**



Project 67073,1,1 (TIP # BR-0073)  
Bridge # 530005 on US 76  
over Gapway Swamp  
Columbus County



NC Department of Transportation  
Geotechnical Engineering Unit  
GeoEnvironmental Section

