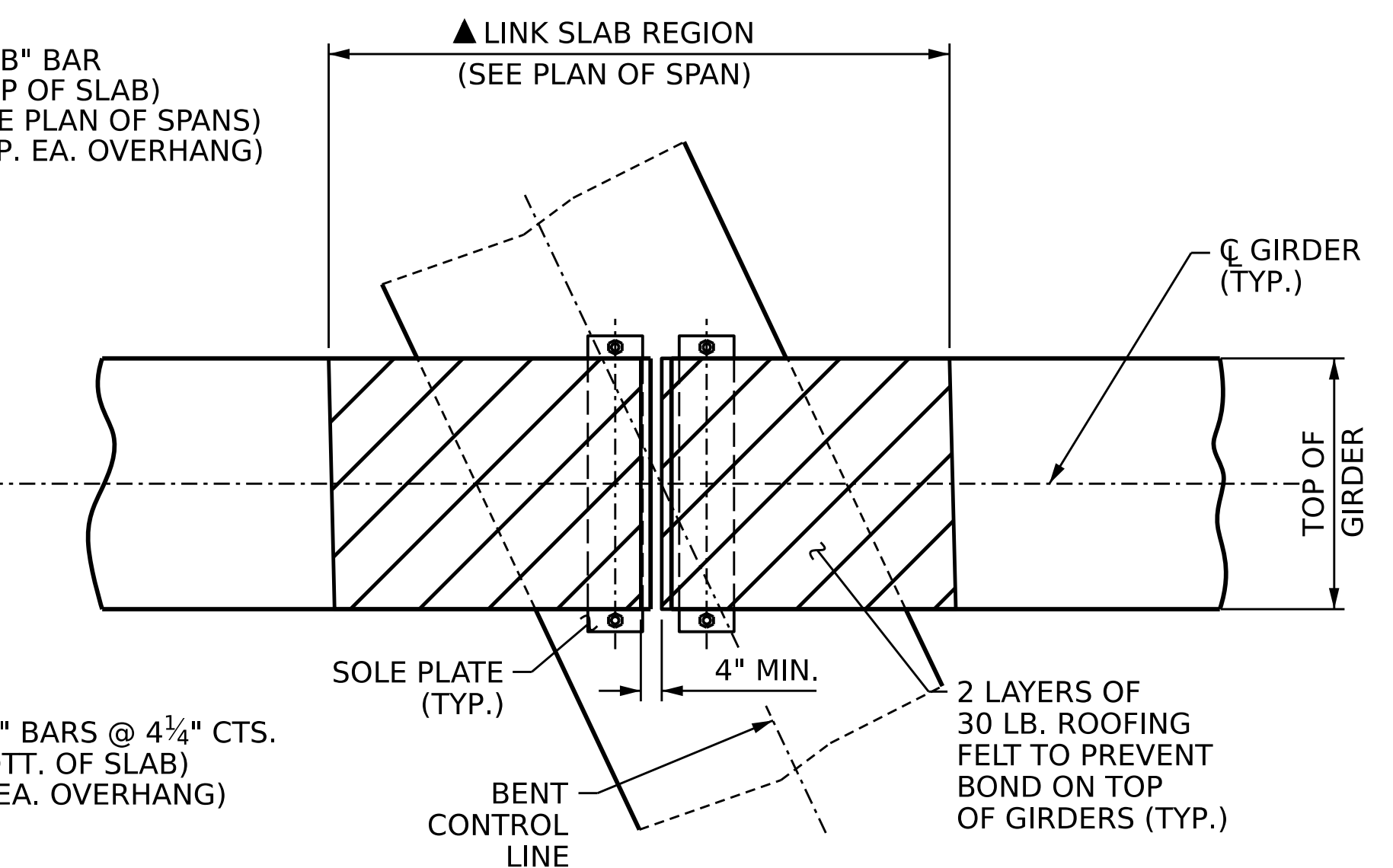
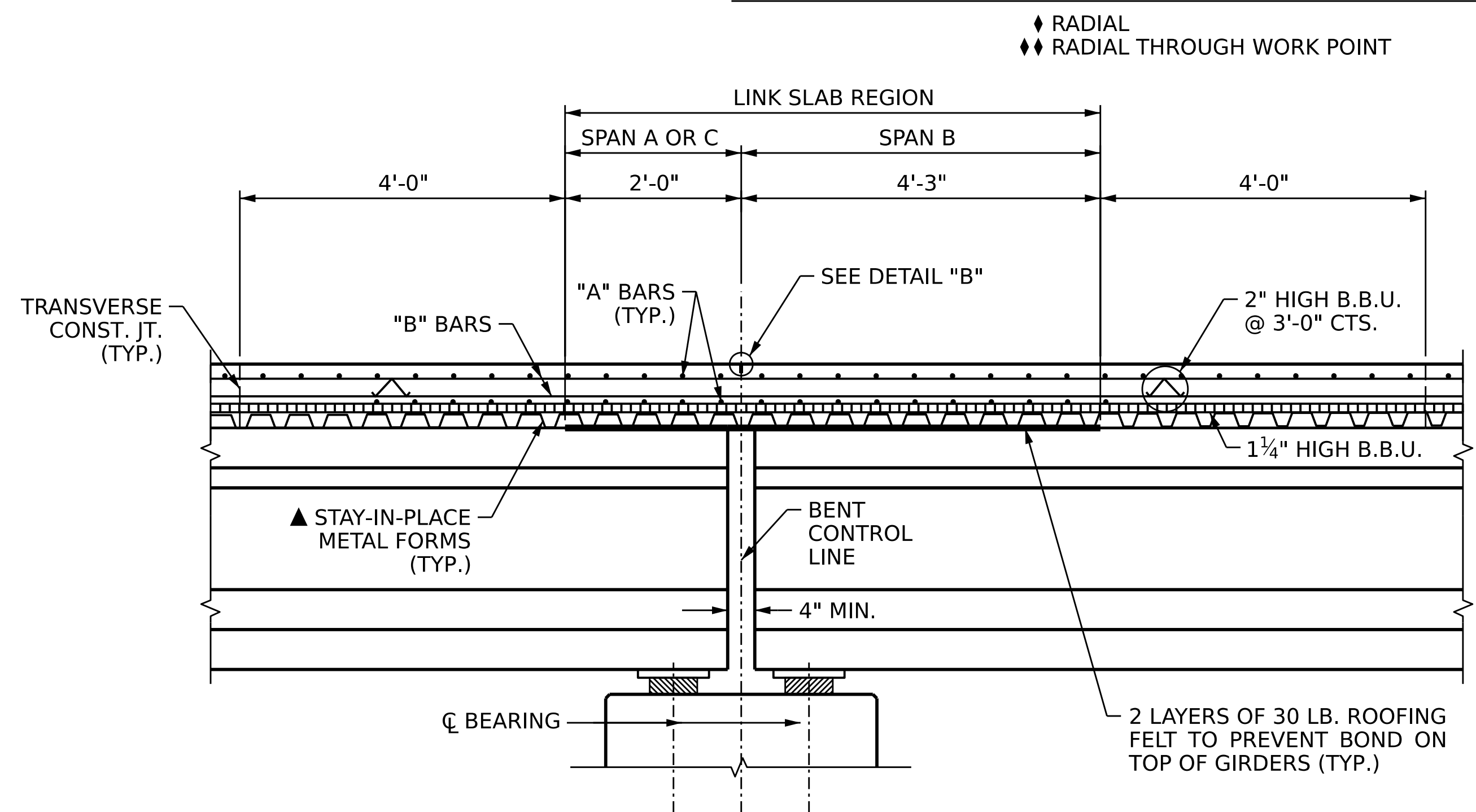


TYPICAL SECTION THROUGH LINK SLAB AT BENT



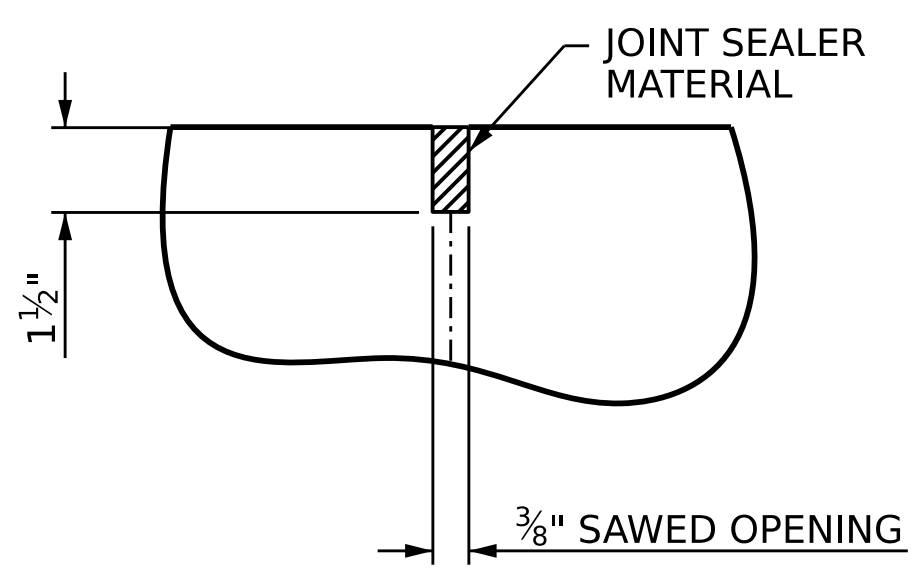
PLAN OF GIRDERS AT LINK SLAB BENT

▲ THE TOP OF GIRDER IN THE REGION OF THE LINK SLAB SHALL BE SMOOTH (NOT RANKED) AND FREE OF STIRRUPS, ANCHOR STUDS, DECK FORMWORK ATTACHMENTS, AND OVERHANG FALSEWORK/FORMWORK ATTACHMENTS.



SECTION AT LINK SLAB

▲ METAL STAY-IN-PLACE FORMS SHALL NOT BE WELDED TO THE SUPPORT ANGLES WITHIN THE LINK SLAB AREAS. SEE "PLAN OF SPANS" SHEETS FOR LOCATION.

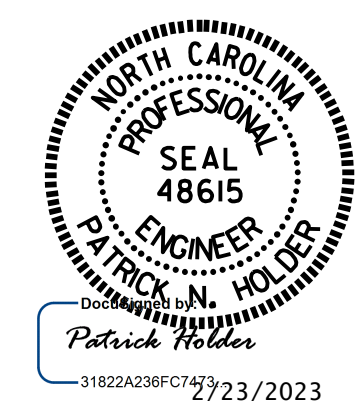


DETAIL "B"

A 1 1/2" DEEP 3/8" WIDE CONTRACTION JOINT AT BENT CONTROL LINE SHALL BE SAWN WITHIN 24 HOURS OF POURING THE LINK SLAB DECK. THE JOINT SHALL BE FILLED WITH JOINT SEALER MATERIAL. THE JOINT SEALER MATERIAL SHALL CONFORM TO THE REQUIREMENTS OF SECTION 1028-3 OF THE STANDARD SPECIFICATIONS.

DRAWN BY : A. Y. WU DATE : 9/22
 CHECKED BY : D. A. GLADDEN DATE : 10/22
 DESIGN ENGINEER OF RECORD : P. INL. HOLLIDAY DATE : 11/22

VOLKERT
 5430 Wade Park Blvd., Suite 410
 Raleigh, NC 27607
 Tel. 919-854-0344 Fax. 919-854-0355
 NC License No. F-0765



DOCUMENT NOT CONSIDERED FINAL UNLESS ALL SIGNATURES COMPLETED

PROJECT NO. **BR-0073**
COLUMBUS COUNTY
 STATION: **18+24.50 -L-**

SHEET 2 OF 3

REVISIONS		SHEET NO.
NO.	DATE	S-8
1		TOTAL SHEETS
2		38