

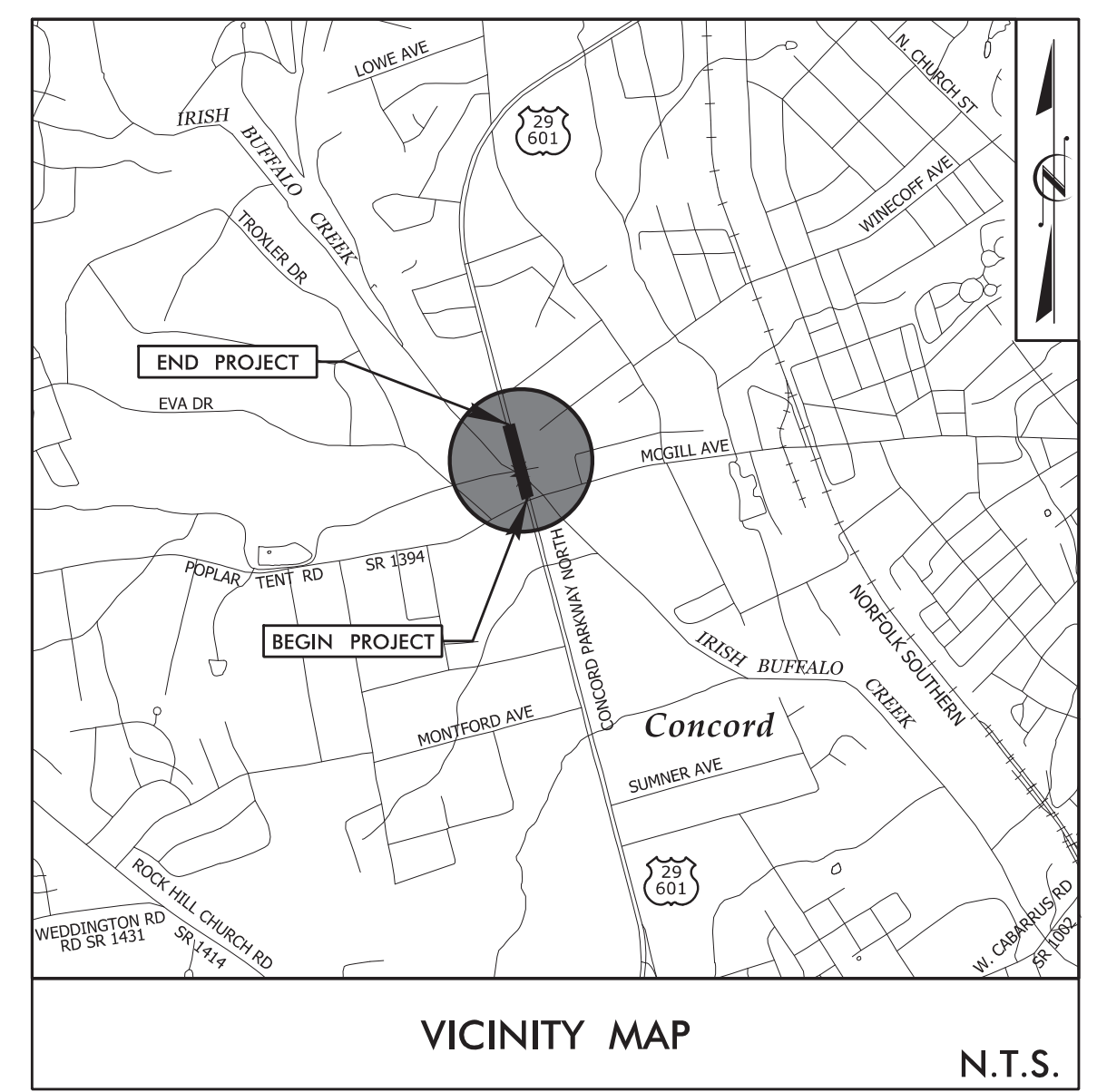
09, 08, 2011

TIP PROJECT: B-5808

STATE OF NORTH CAROLINA  
DIVISION OF HIGHWAYS

T.I.P. NO.	SHEET NO.
B-5808	UO-1

NOTE:  
ALL UTILITY WORK SHOWN ON THIS SHEET IS DONE BY OTHERS.  
NO PAYMENT WILL BE MADE TO THE CONTRACTOR FOR UTILITY WORK SHOWN ON THIS SHEET.



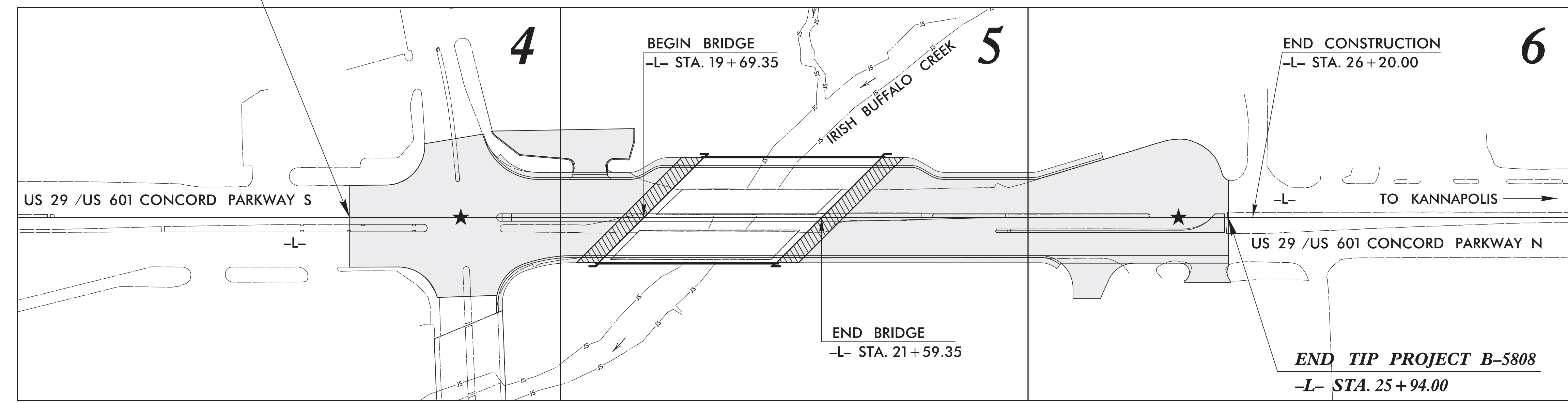
# UTILITIES BY OTHERS PLANS CABARRUS COUNTY

LOCATION: BRIDGES #057 & #059  
OVER IRISH BUFFALO CREEK  
ON US 29 /US 601

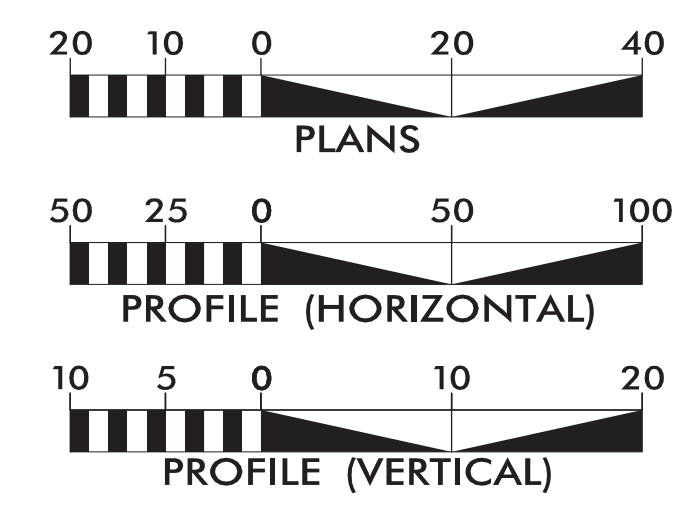
TYPE OF WORK: POWER, GAS, COMMUNICATIONS,



BEGIN TIP PROJECT B-5808  
-L- STA. 16 + 55.00



### GRAPHIC SCALES



### INDEX OF SHEETS

SHEET NO.:	DESCRIPTION:
UO-1	TITLE SHEET
UO-2 THRU UO-4	UBO PLAN SHEETS

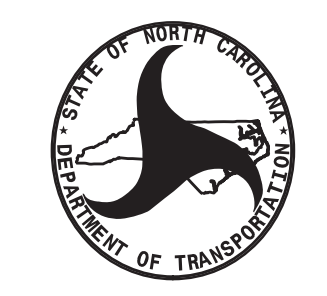
### UTILITY OWNERS WITH CONFLICTS

- (A) POWER - CITY OF CONCORD POWER
- (B) COMMUNICATION - CONCORD FIBER
- (C) COMMUNICATION - AT&T
- (D) COMMUNICATION - GOOGLE FIBER
- (E) COMMUNICATION - SEGRA
- (F) COMMUNICATION - WINDSTREAM
- (G) GAS - DOMINION ENERGY

### PREPARED IN THE OFFICE OF:

STV Engineers, Inc.  
900 West Trade St., Suite 715  
Charlotte, NC 28202  
NC License Number F-0991

Oriana Roumillat, PE	UTILITY PROJECT MANAGER
Logan Hedrick	PROJECT UTILITY COORDINATOR
Logan Hedrick	PROJECT UTILITY CADD



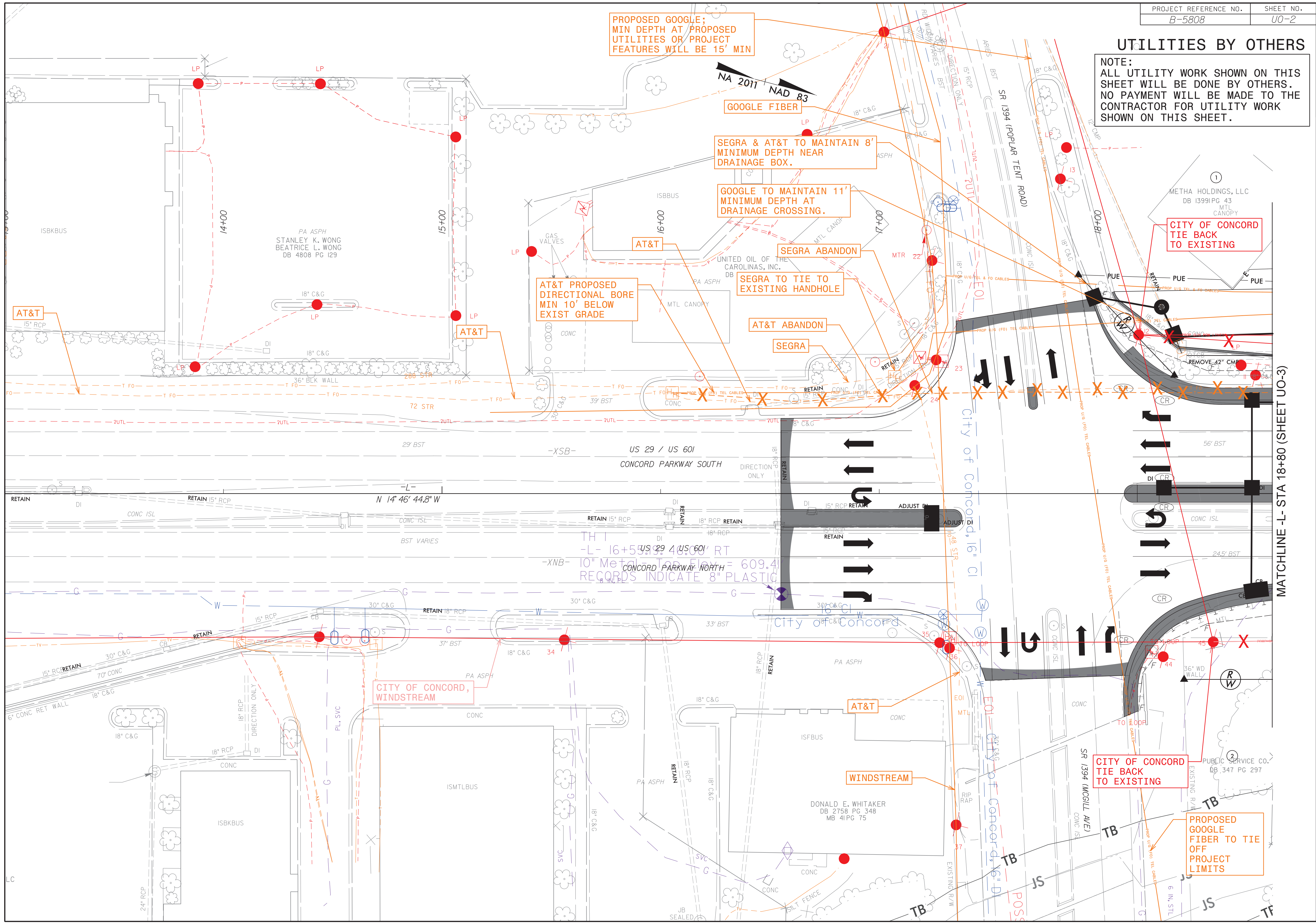
DIVISION OF HIGHWAYS  
UTILITIES UNIT  
1555 MAIL SERVICES CENTER  
RALEIGH, NC 27699-1555  
PHONE (919) 707-6690  
FAX (919) 250-4151

Michael Bright	UTILITIES REGIONAL ENGINEER
Donald Hampton	UTILITIES ENGINEER
Jon Gaillard	UTILITIES AREA COORDINATOR
Steve Trexler	UTILITIES COORDINATOR

\$\$\$\$\$ SYSTEMS DGN \$\$\$\$\$\$  
\$\$\$\$\$ USERNAME \$\$\$\$\$\$

### UTILITIES BY OTHERS

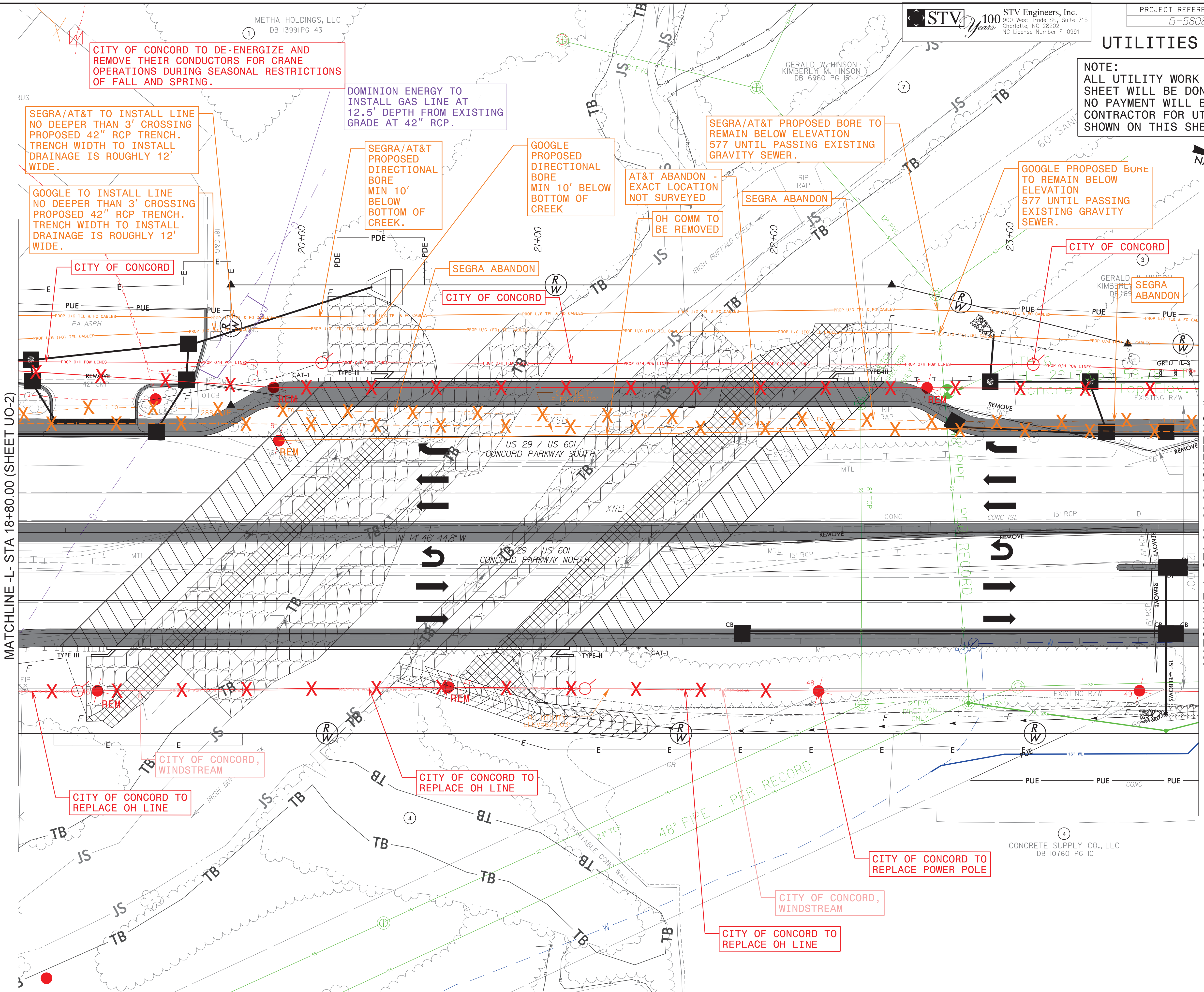
NOTE:  
ALL UTILITY WORK SHOWN ON THIS SHEET WILL BE DONE BY OTHERS. NO PAYMENT WILL BE MADE TO THE CONTRACTOR FOR UTILITY WORK SHOWN ON THIS SHEET.



MATCHLINE -L- STA 18+80 (SHEET U0-3)

**UTILITIES BY OTHERS**

**NOTE:**  
 ALL UTILITY WORK SHOWN ON THIS SHEET WILL BE DONE BY OTHERS. NO PAYMENT WILL BE MADE TO THE CONTRACTOR FOR UTILITY WORK SHOWN ON THIS SHEET.



MATCHLINE -L- STA 18+80.00 (SHEET UO-2)

MATCHLINE -L- STA 23+80.00 (SHEET UO-4)

CITY OF CONCORD TO DE-ENERGIZE AND REMOVE THEIR CONDUCTORS FOR CRANE OPERATIONS DURING SEASONAL RESTRICTIONS OF FALL AND SPRING.

DOMINION ENERGY TO INSTALL GAS LINE AT 12.5' DEPTH FROM EXISTING GRADE AT 42" RCP.

SEGRA/AT&T TO INSTALL LINE NO DEEPER THAN 3' CROSSING PROPOSED 42" RCP TRENCH. TRENCH WIDTH TO INSTALL DRAINAGE IS ROUGHLY 12' WIDE.

GOOGLE TO INSTALL LINE NO DEEPER THAN 3' CROSSING PROPOSED 42" RCP TRENCH. TRENCH WIDTH TO INSTALL DRAINAGE IS ROUGHLY 12' WIDE.

SEGRA/AT&T PROPOSED DIRECTIONAL BORE MIN 10' BELOW BOTTOM OF CREEK.

GOOGLE PROPOSED DIRECTIONAL BORE MIN 10' BELOW BOTTOM OF CREEK

SEGRA/AT&T PROPOSED BORE TO REMAIN BELOW ELEVATION 577 UNTIL PASSING EXISTING GRAVITY SEWER.

GOOGLE PROPOSED BORE TO REMAIN BELOW ELEVATION 577 UNTIL PASSING EXISTING GRAVITY SEWER.

AT&T ABANDON - EXACT LOCATION NOT SURVEYED

OH COMM TO BE REMOVED

CITY OF CONCORD

SEGRA ABANDON

CITY OF CONCORD

CITY OF CONCORD

CITY OF CONCORD, WINDSTREAM

CITY OF CONCORD TO REPLACE OH LINE

CITY OF CONCORD TO REPLACE OH LINE

CITY OF CONCORD TO REPLACE POWER POLE

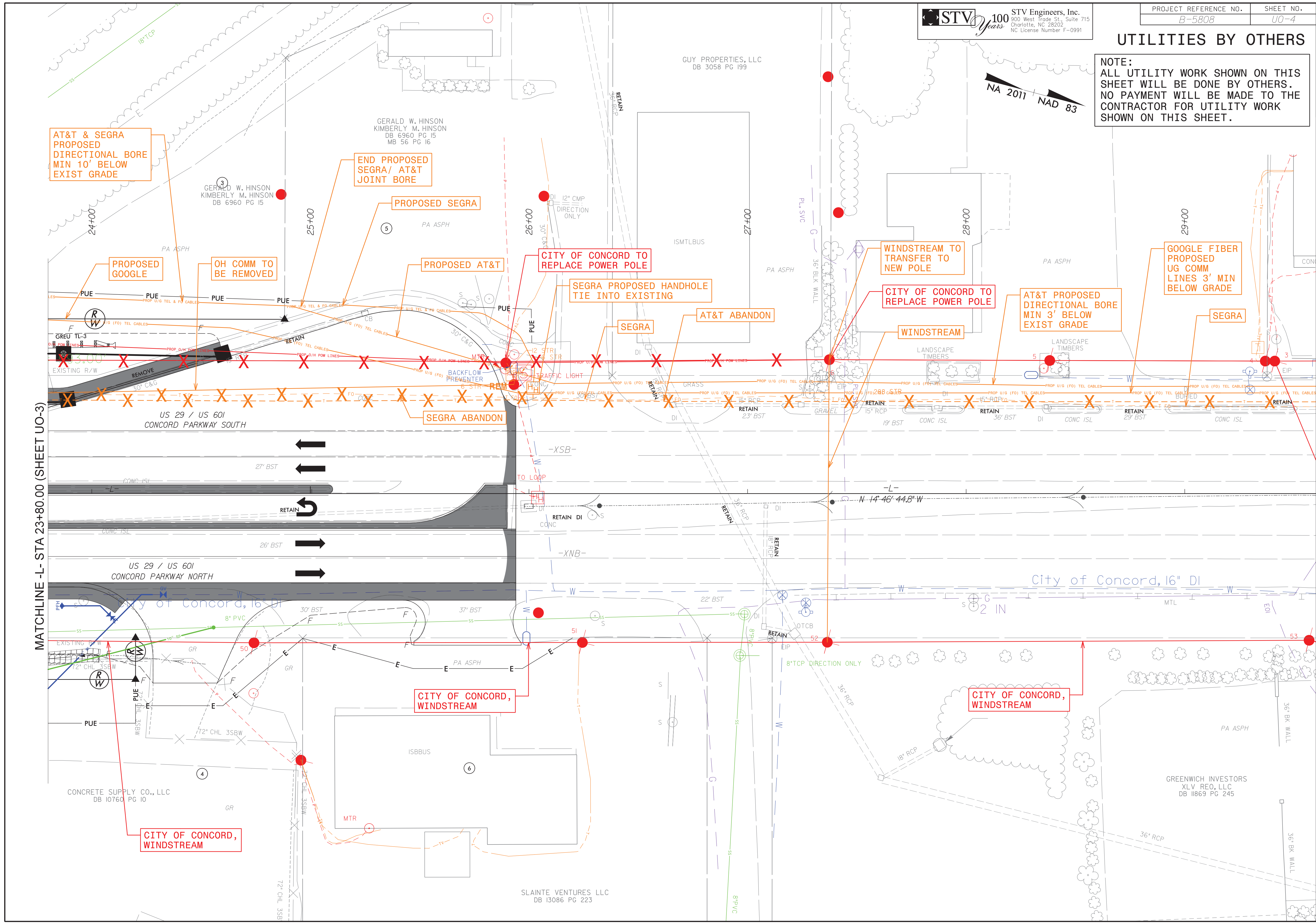
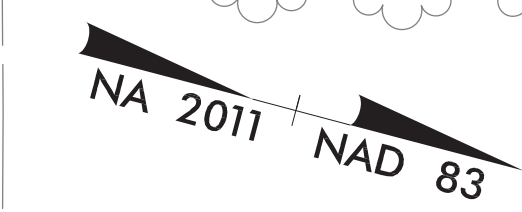
CITY OF CONCORD, WINDSTREAM

CITY OF CONCORD TO REPLACE OH LINE

CONCRETE SUPPLY CO., LLC  
 DB 10760 PG 10

**UTILITIES BY OTHERS**

**NOTE:**  
 ALL UTILITY WORK SHOWN ON THIS SHEET WILL BE DONE BY OTHERS. NO PAYMENT WILL BE MADE TO THE CONTRACTOR FOR UTILITY WORK SHOWN ON THIS SHEET.



MATCHLINE -L- STA 23+80.00 (SHEET U0-3)