

R:\Structures\04\_Station\05 RFC Bridge Plans\401\_29\_B5808\_SMU\_A56\_065\_20057.dgn 3/6/2023 10:55:58 AM HensleSC

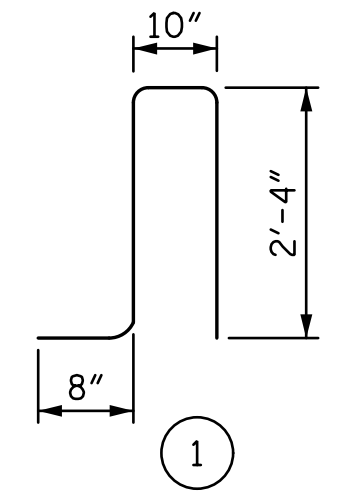
**NOTES**

THE COST OF THE END POST ON THE APPROACH SLAB SHALL BE INCLUDED IN THE LINEAR FOOT CONTRACT PRICE BID FOR "1'-2" X 3'-4 1/4" CONCRETE PARAPET".

THE END POST ON EACH APPROACH SLAB SHALL NOT BE CAST UNTIL ALL APPROACH SLAB CONCRETE HAS BEEN CAST AND HAS REACHED A MINIMUM COMPRESSIVE STRENGTH OF 3,000 PSI.

ALL REINFORCING STEEL IN END POSTS SHALL BE EPOXY COATED.

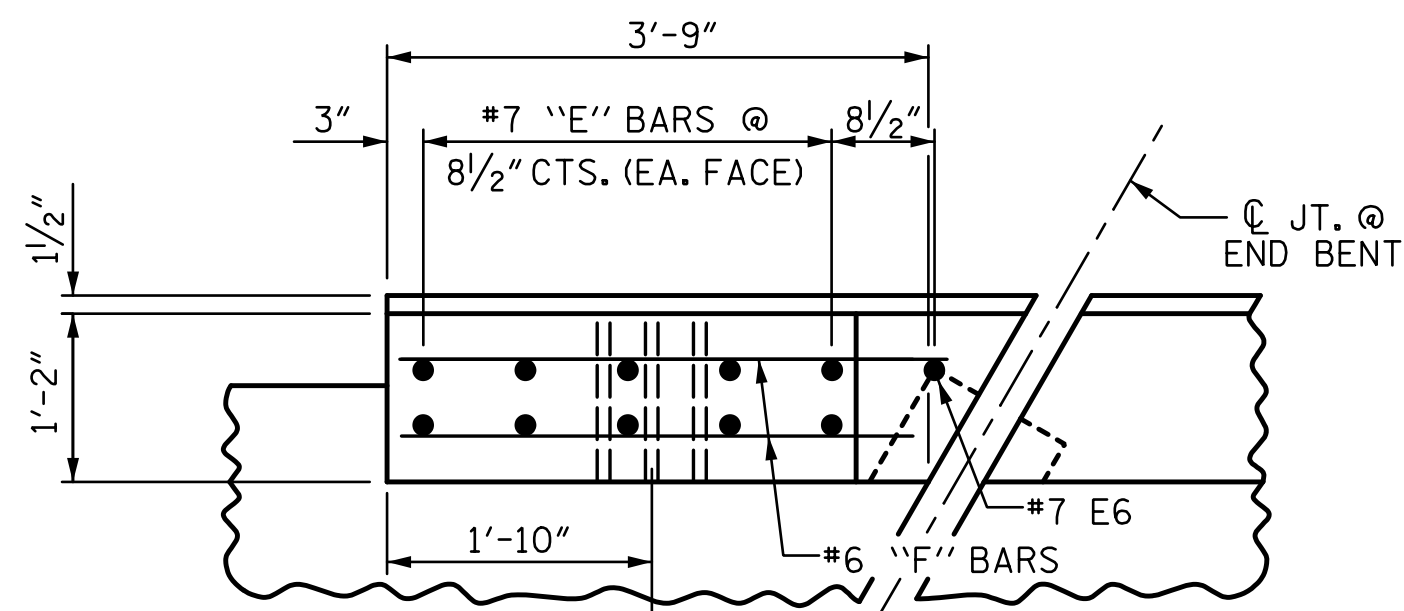
**BAR TYPES**



ALL BAR DIMENSIONS ARE OUT TO OUT.

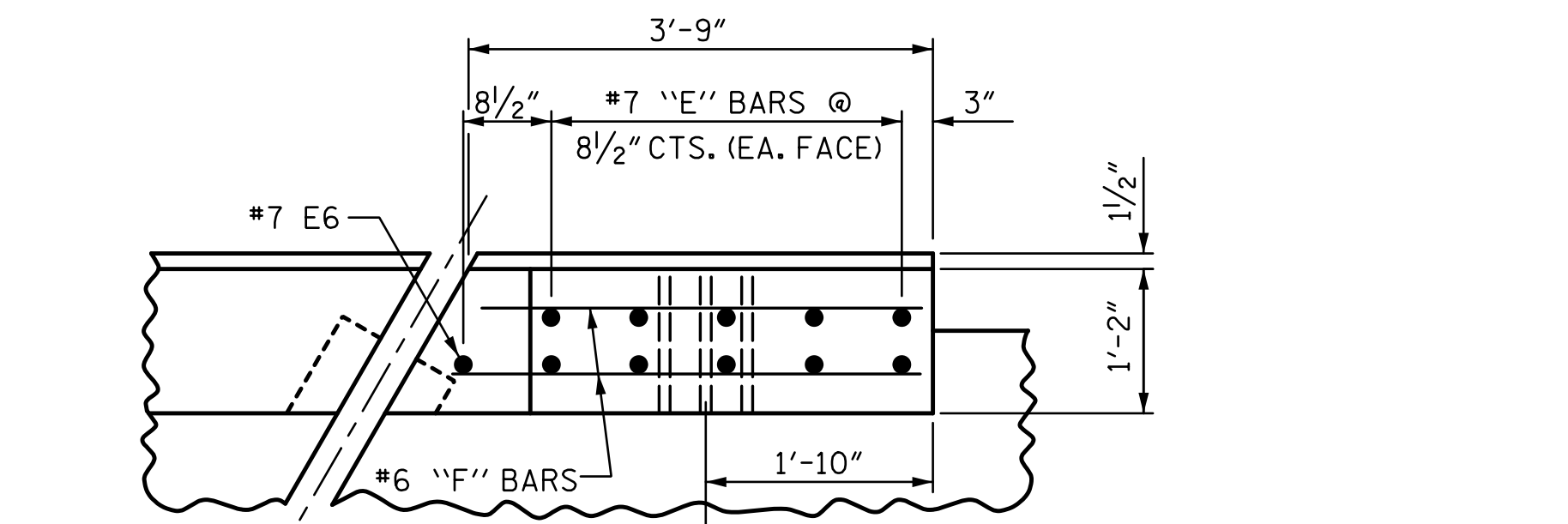
**BILL OF MATERIAL FOR 2 END POSTS PER STAGE (2 STAGES REQ'D.)**

BAR	NO.	SIZE	TYPE	LENGTH	WEIGHT
*E1	4	#7	STR	3'-2"	26
*E2	4	#7	STR	3'-8"	30
*E3	4	#7	STR	4'-1"	33
*E4	4	#7	STR	4'-7"	37
*E5	4	#7	STR	5'-0"	41
*E6	2	#7	STR	5'-2"	21
*F1	10	#6	STR	3'-5"	51
*F2	2	#6	STR	2'-8"	8
*F3	2	#6	STR	1'-6"	5
*F4	2	#6	STR	3'-8"	11
*F5	10	#6	STR	4'-2"	63
*F6	2	#6	STR	3'-5"	10
*F7	2	#6	STR	2'-3"	7
*F8	2	#6	STR	4'-2"	13
*S1	8	#5	1	6'-2"	51
* EPOXY COATED REINFORCING STEEL					LBS. 407
CLASS AA CONCRETE				CU. YDS.	1.9
TOTAL LIN. FT. OF CONCRETE PARAPET					9.0



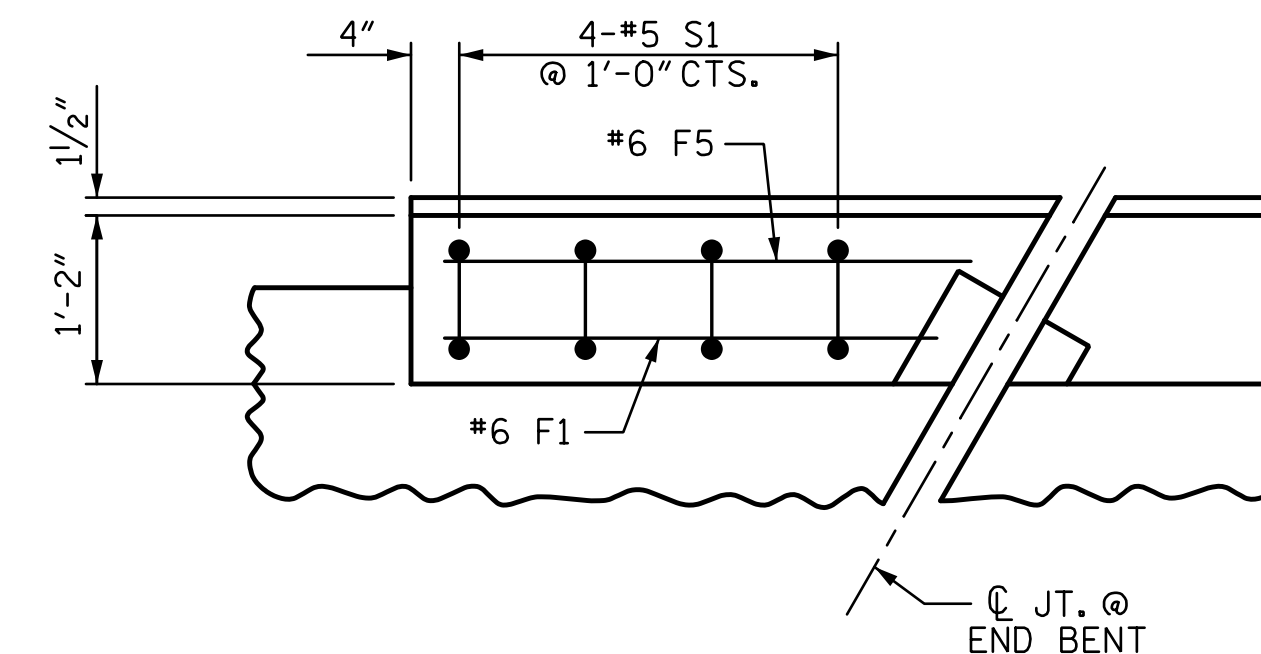
**PLAN OF END POST**

END BENT 1 STAGE 1 SHOWN, END BENT 2 STAGE 3 SIMILAR.

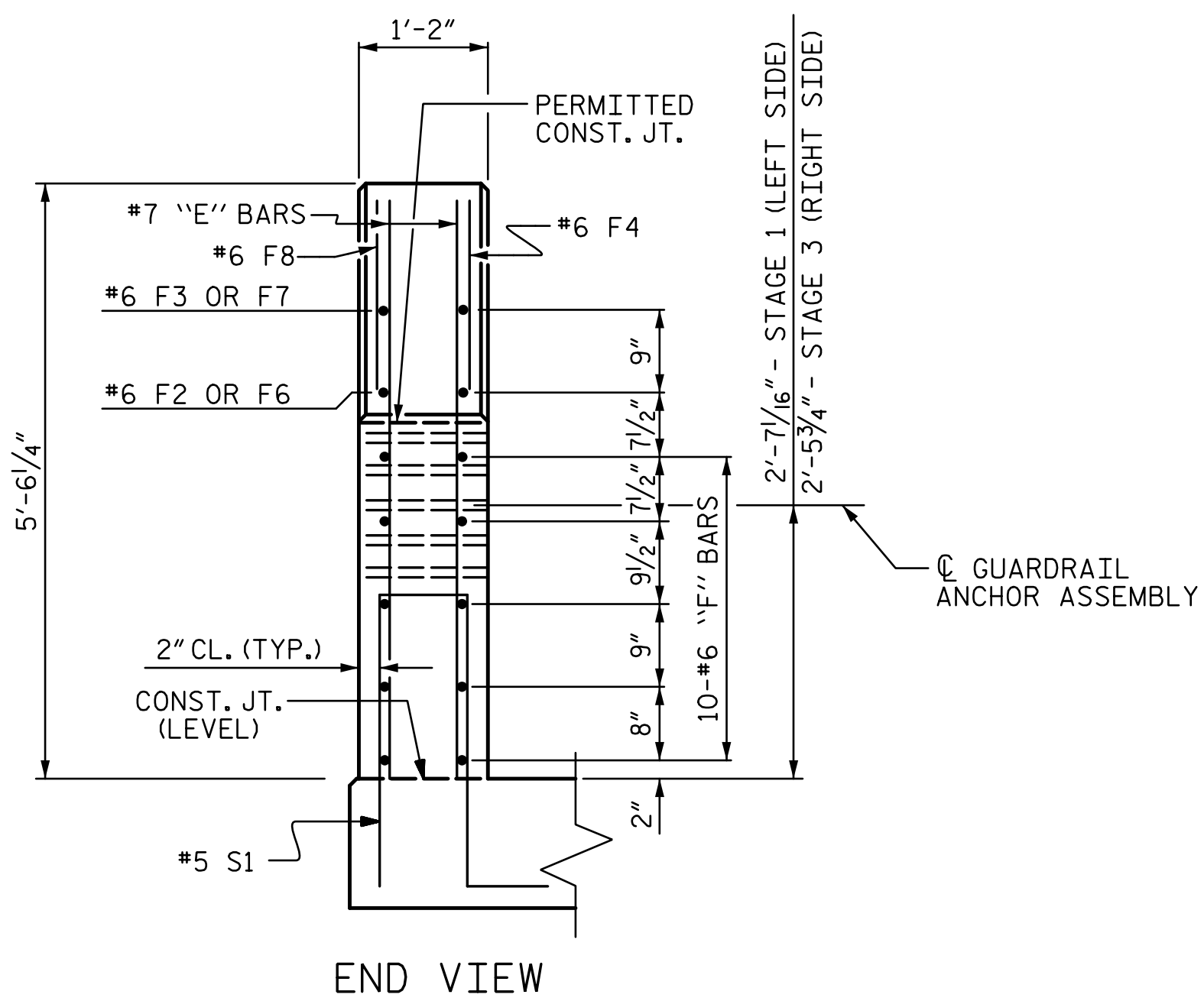


**PLAN OF END POST**

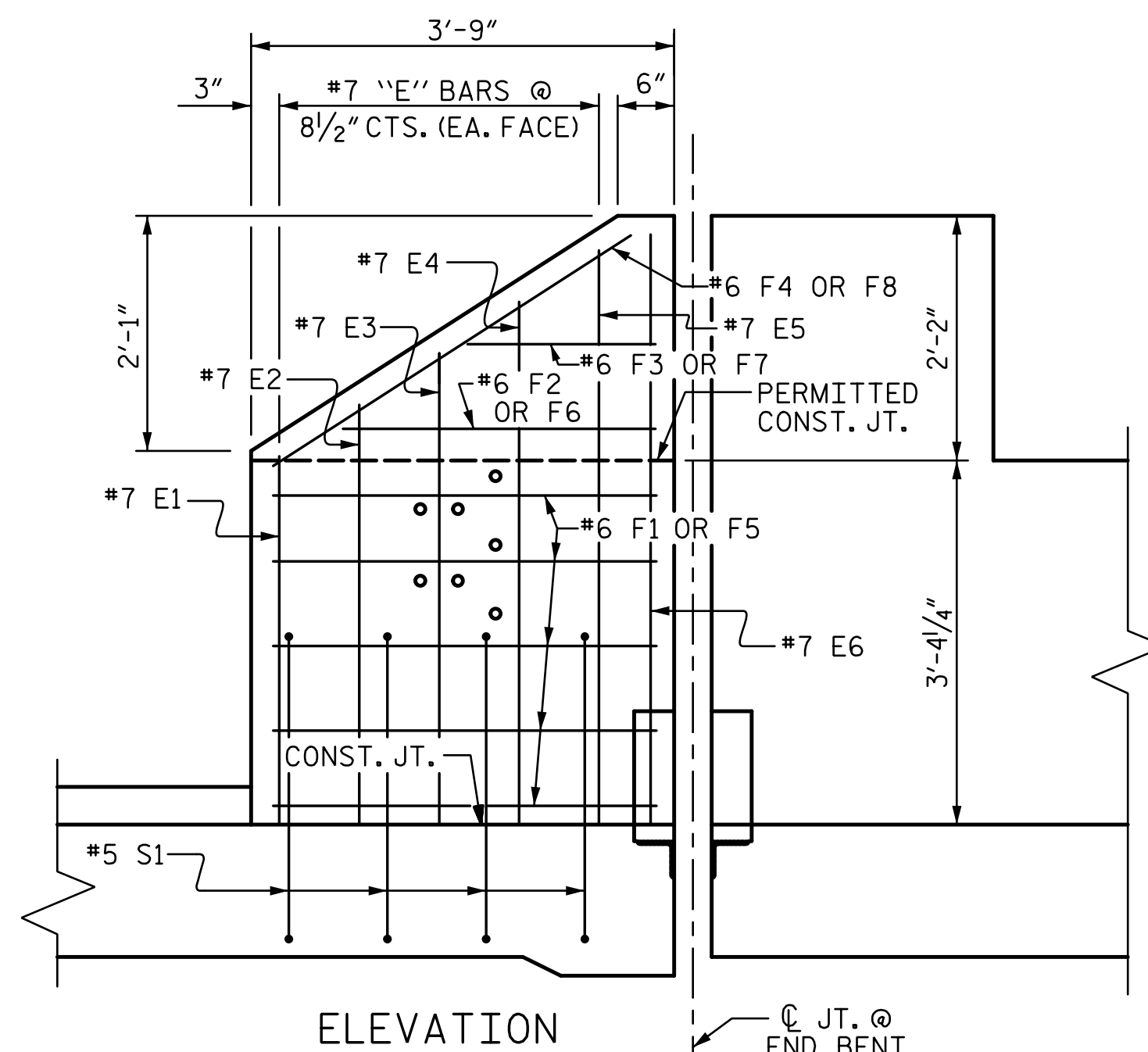
END BENT 2 STAGE 1 SHOWN, END BENT 1 STAGE 3 SIMILAR.



**PLAN OF PARAPET**



**END VIEW**



**ELEVATION**

**END POST FOR TWO BAR RAIL**

(SIDEWALK NOT SHOWN FOR CLARITY.)

PROJECT NO. **B-5808**

**CABARRUS** COUNTY

STATION: **20+64.00 -L-**

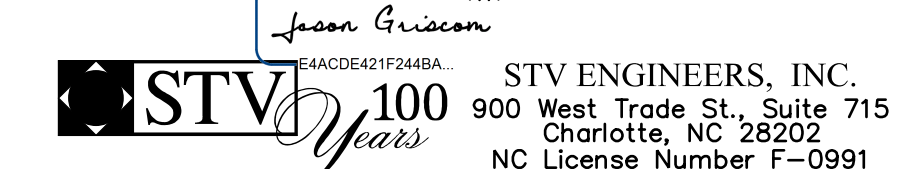
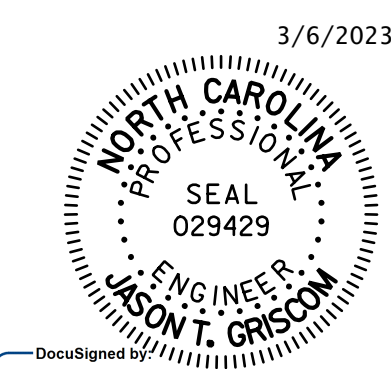
SHEET 6 OF 6

STATE OF NORTH CAROLINA  
DEPARTMENT OF TRANSPORTATION  
RALEIGH

**APPROACH SLAB DETAILS**

REVISIONS				SHEET NO.	
NO.	BY:	DATE:	NO.	BY:	DATE:
1			3		
2			4		

S-65  
TOTAL SHEETS 65



DOCUMENT NOT CONSIDERED FINAL UNLESS ALL SIGNATURES COMPLETED

ASSEMBLED BY : SGH DATE : 11-22  
CHECKED BY : MLO DATE : 11-22  
DESIGN ENGINEER OF RECORD : J. GRISCOM DATE : 3-23