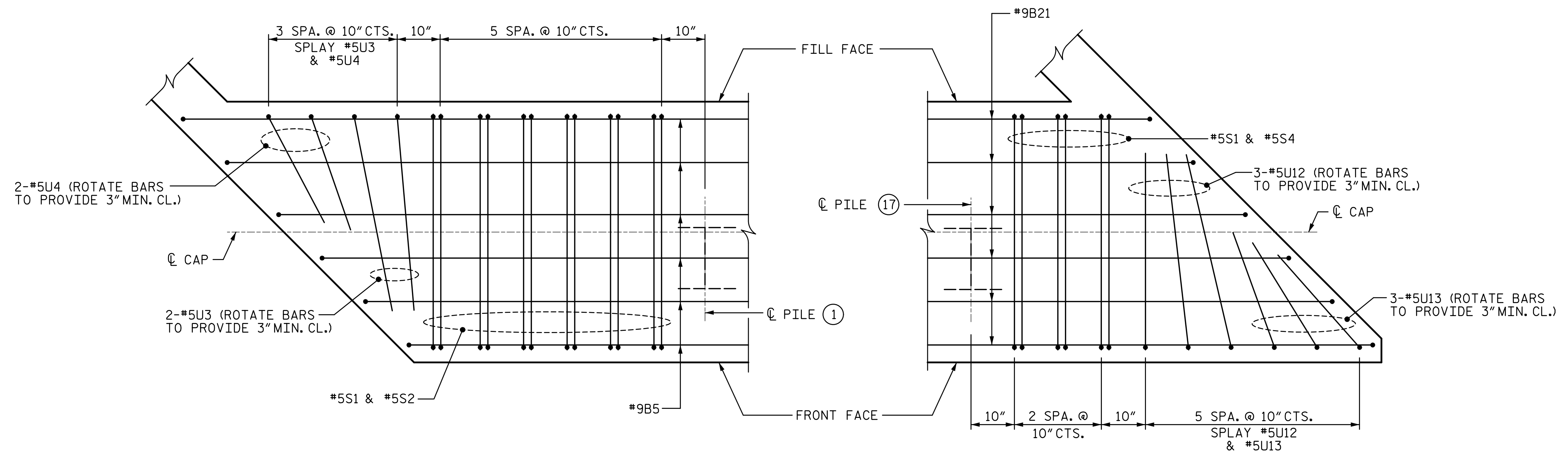


R:\Structures\04\_Station\05 RFC Bridge Plans\40113\_B5808\_SML\E25\_057\_120057.dgn  
3/6/2023 10:42 AM HensleSC

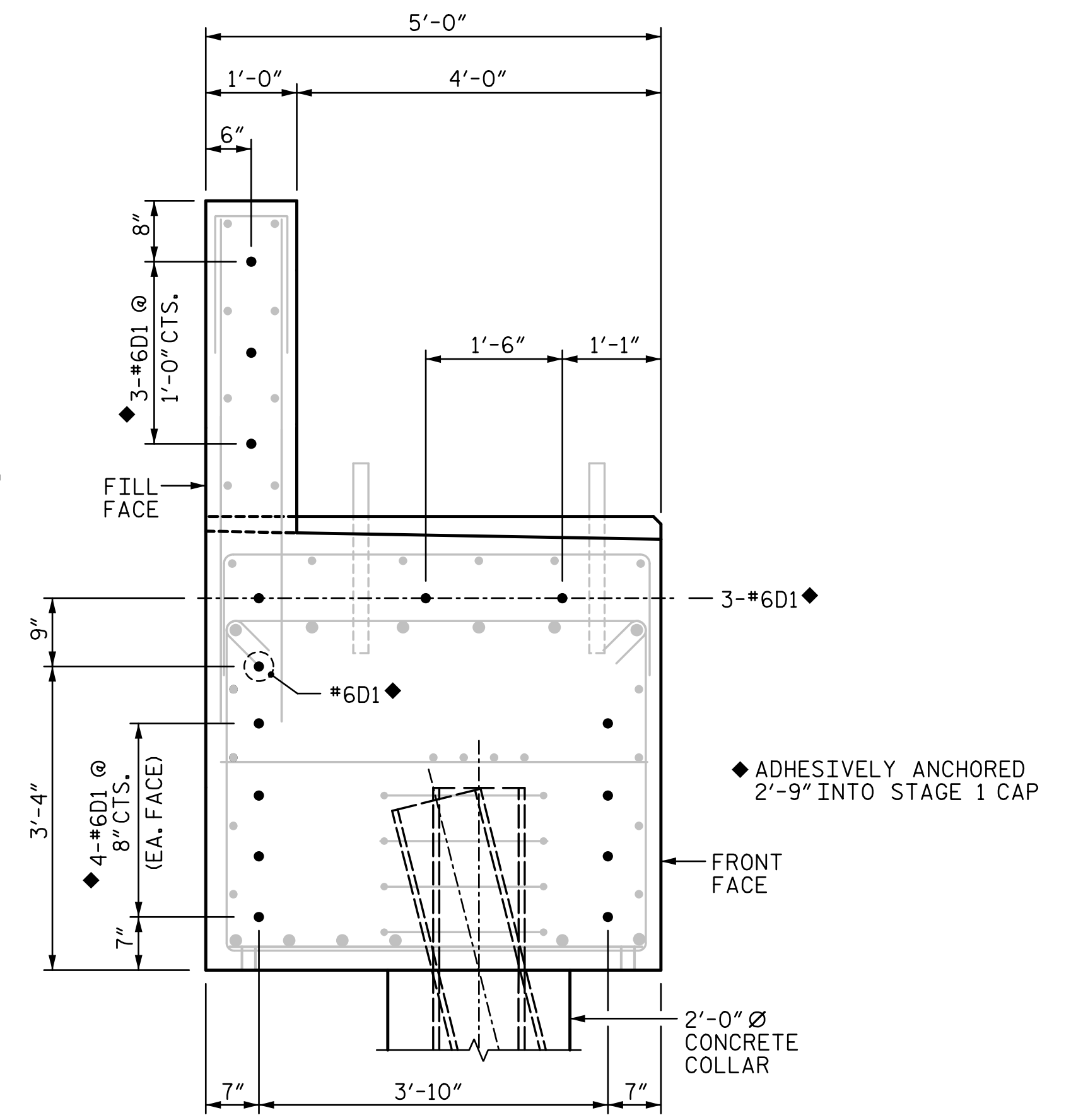


**DETAIL "C"**

STAGE 1  
(TOP "B" BARS & "S" BARS SHOWN. REMAINING CAP REINFORCING AND WING REINFORCEMENT NOT SHOWN FOR CLARITY.)

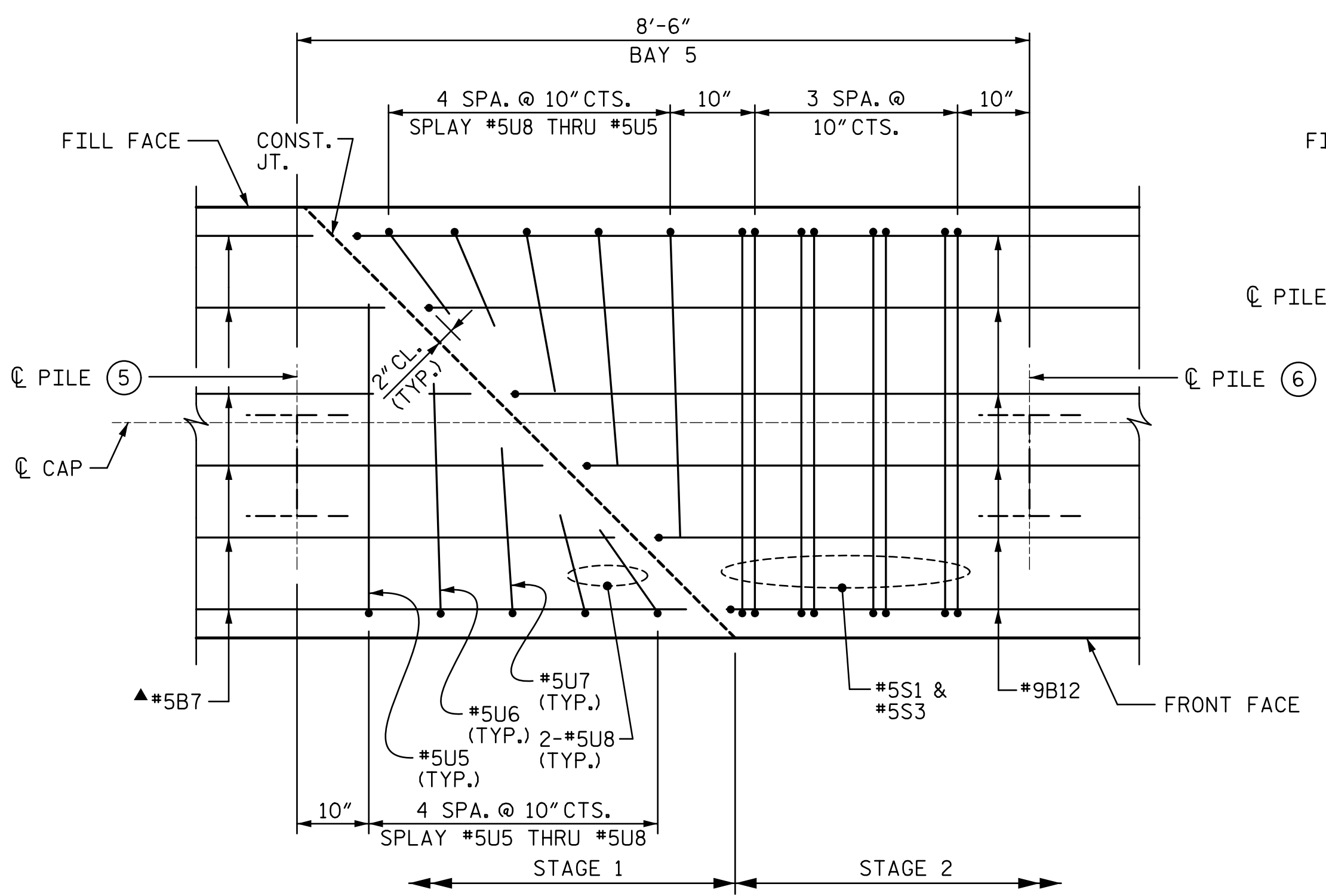
**DETAIL "D"**

STAGE 3  
(TOP "B" BARS & "S" BARS SHOWN. REMAINING CAP REINFORCING AND WING REINFORCEMENT NOT SHOWN FOR CLARITY.)



**DOWEL LOCATION**

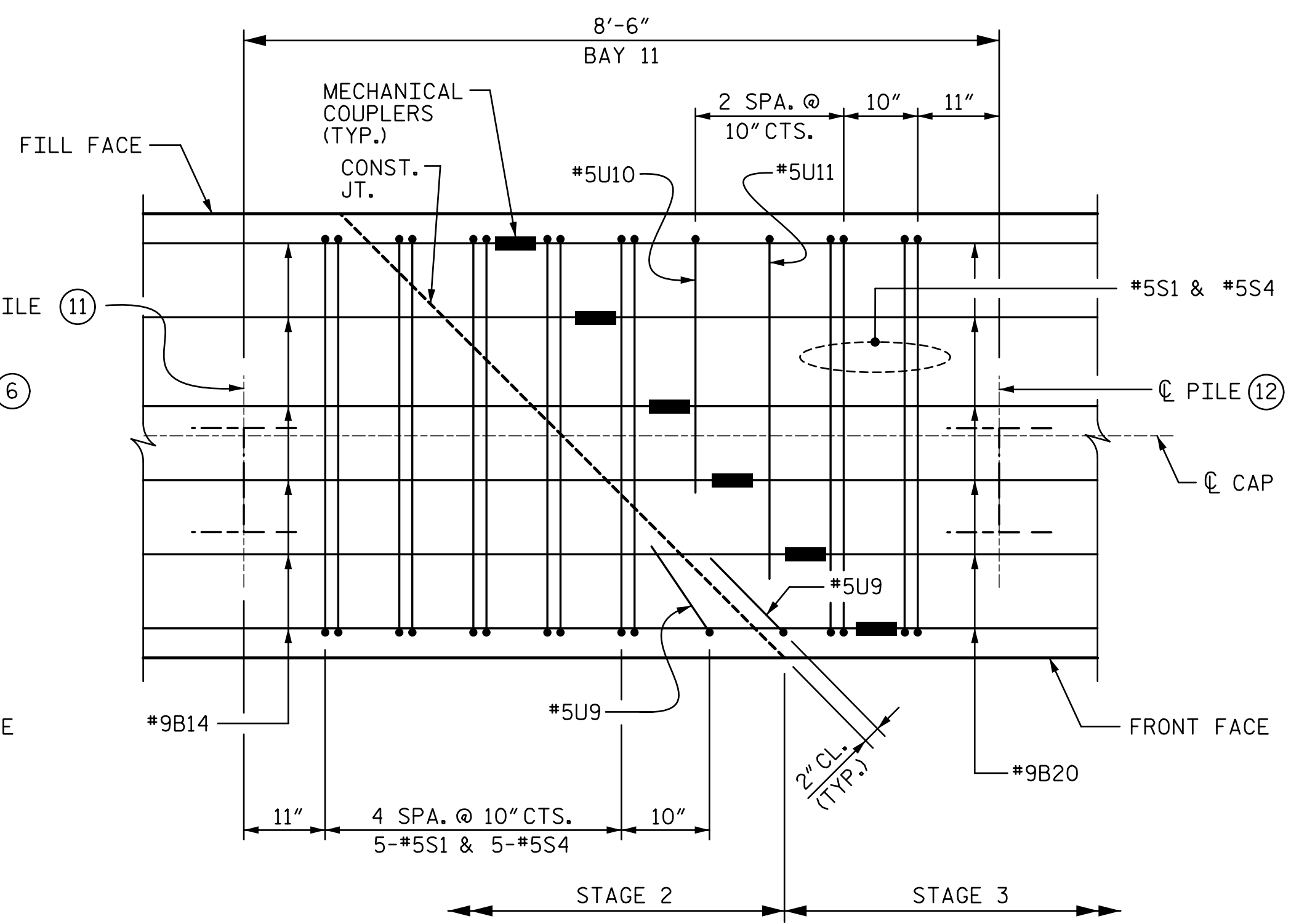
(CONSTRUCTION JOINT BETWEEN STAGE 1 AND STAGE 2 ONLY.)  
LEVEL ONE FIELD TESTING OF THE ADHESIVELY ANCHORED DOWELS IS REQUIRED. THE YIELD LOAD OF THE DOWEL IS 26.4 KIPS.



**DETAIL "E"**

(TOP "B" BARS & "S" BARS SHOWN. REMAINING CAP REINFORCING NOT SHOWN FOR CLARITY.)

▲ FIELD CUT #5B7 BARS TO PROVIDE 2" CLEARANCE TO EDGE OF SEAT AND CONSTRUCTION JOINT.



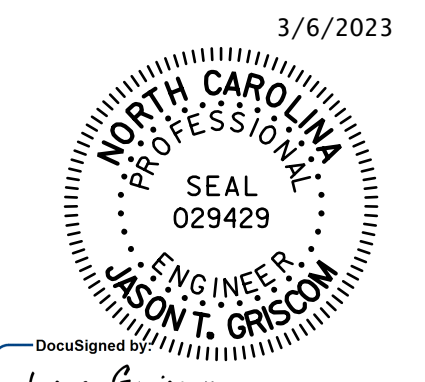
**DETAIL "F"**

(TOP "B" BARS & "S" BARS SHOWN. REMAINING CAP REINFORCING NOT SHOWN FOR CLARITY.)

PROJECT NO. B-5808  
CABARRUS COUNTY  
STATION: 20+64.00 -L-  
SHEET 5 OF 6

STATE OF NORTH CAROLINA  
DEPARTMENT OF TRANSPORTATION  
RALEIGH

**END BENT 2**



STV ENGINEERS, INC.  
900 West Trade St., Suite 715  
Charlotte, NC 28202  
NC License Number F-0991

DOCUMENT NOT CONSIDERED FINAL UNLESS ALL SIGNATURES COMPLETED

REVISIONS				SHEET NO.	
NO.	BY:	DATE:	NO.	BY:	DATE:
1			3		
2			4		

TOTAL SHEETS 65

ASSEMBLED BY :	SGH	DATE :	11-22
CHECKED BY :	MLO	DATE :	11-22
DESIGN ENGINEER OF RECORD :	J. GRISCOM	DATE :	3-23