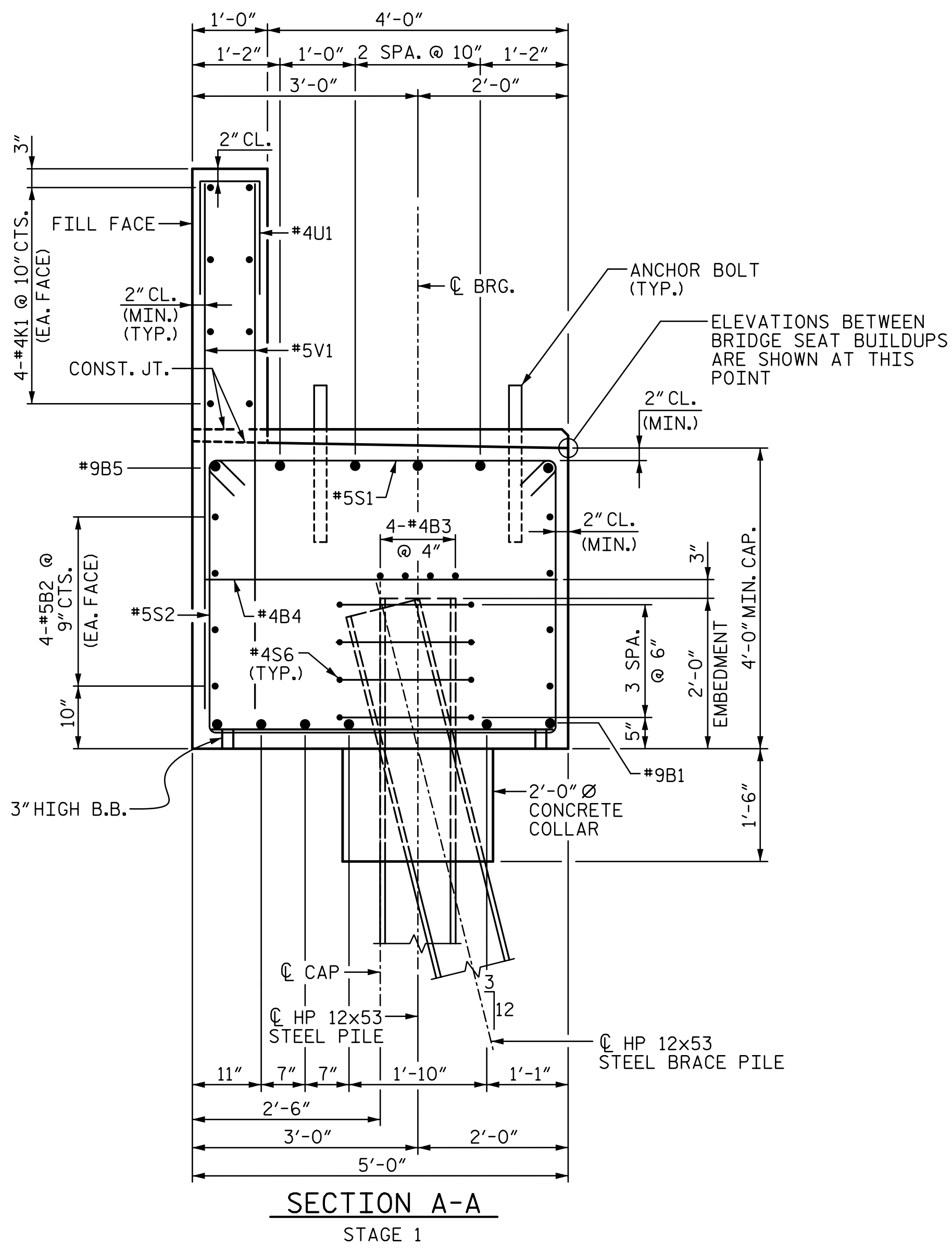
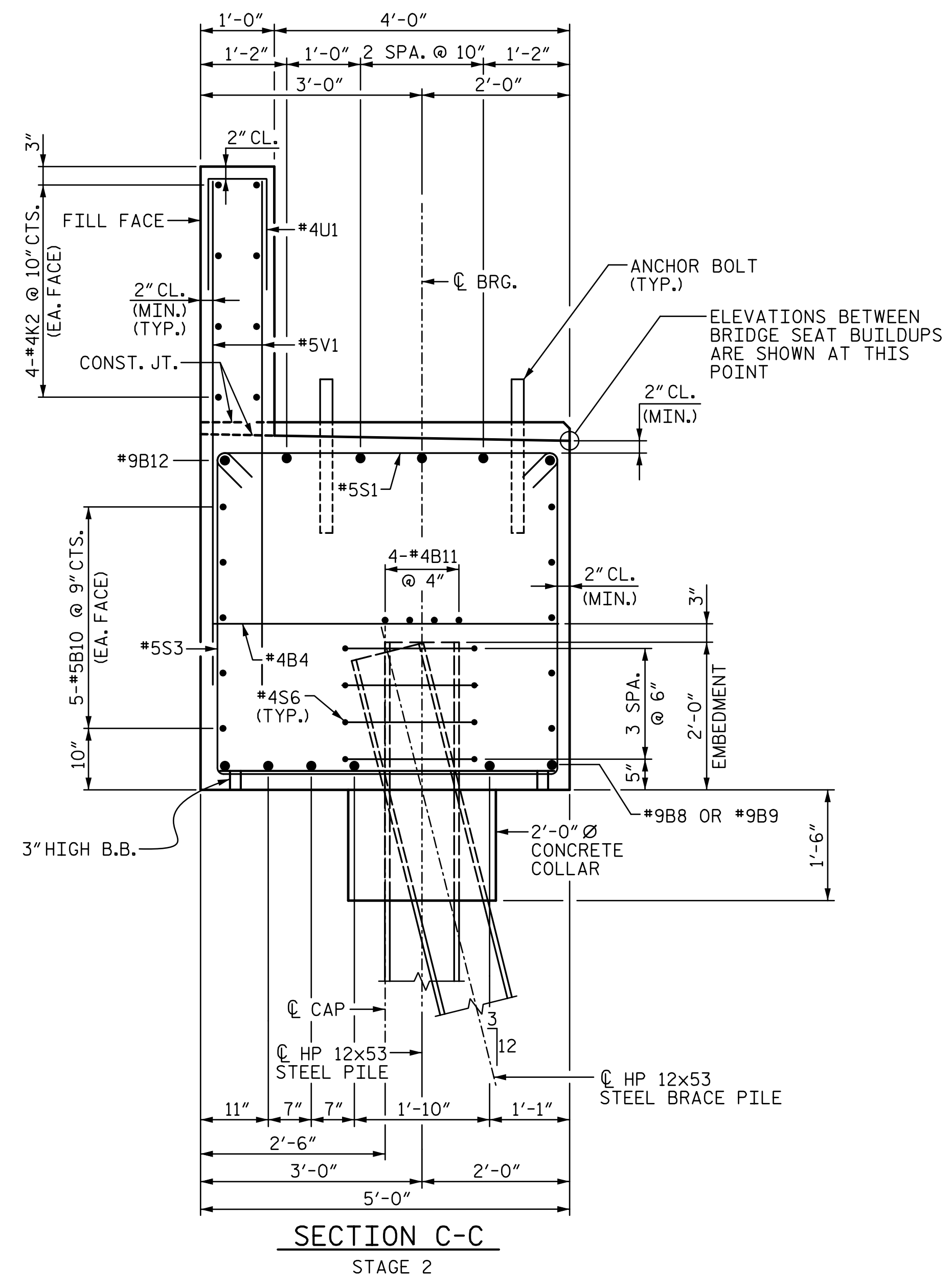


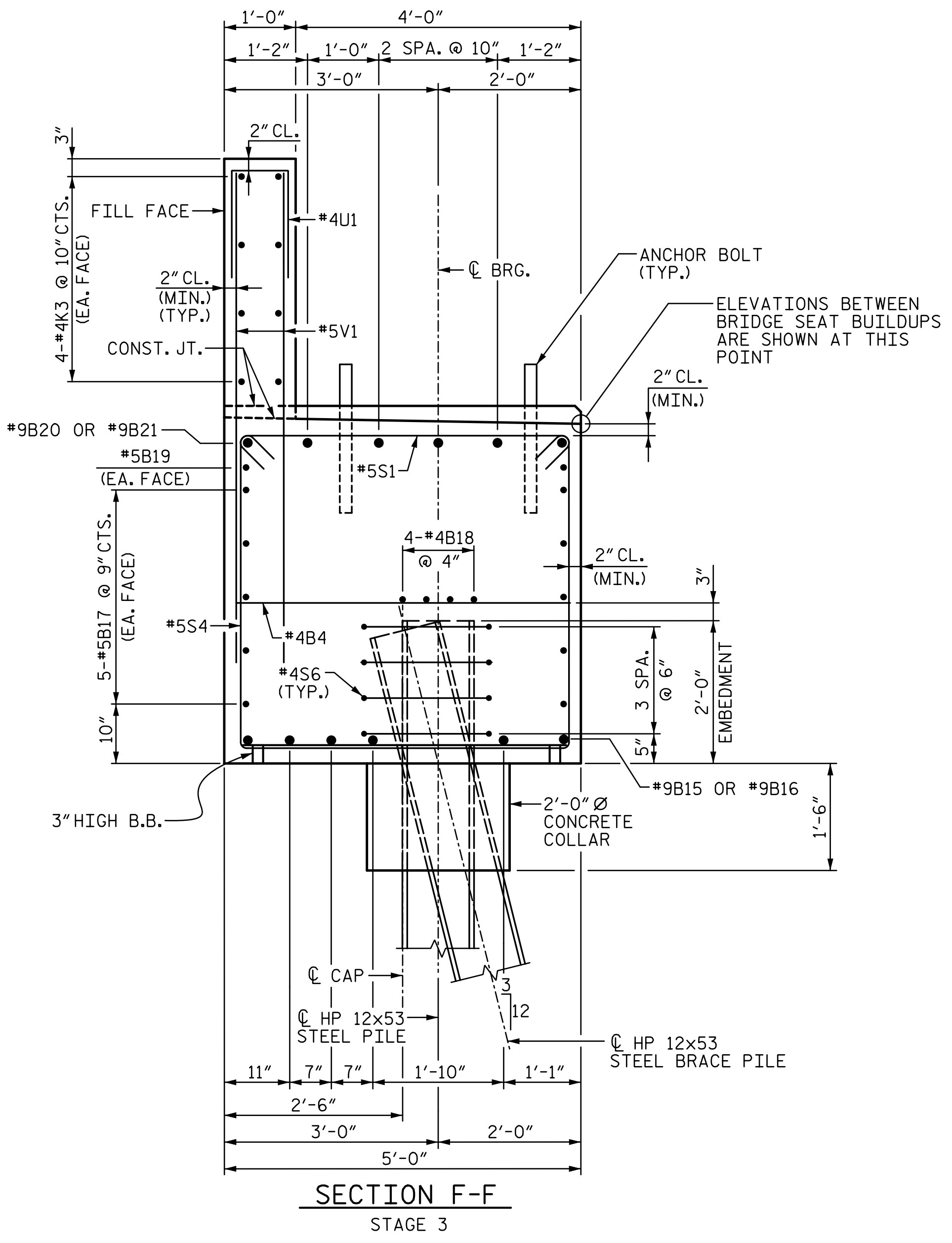
R:\Structures\04_Station\05 RFC Bridge Plans\401_ill_B5808_SMU_E24_056_120057.dgn
3/6/2023 10:42:00 AM HensleSG



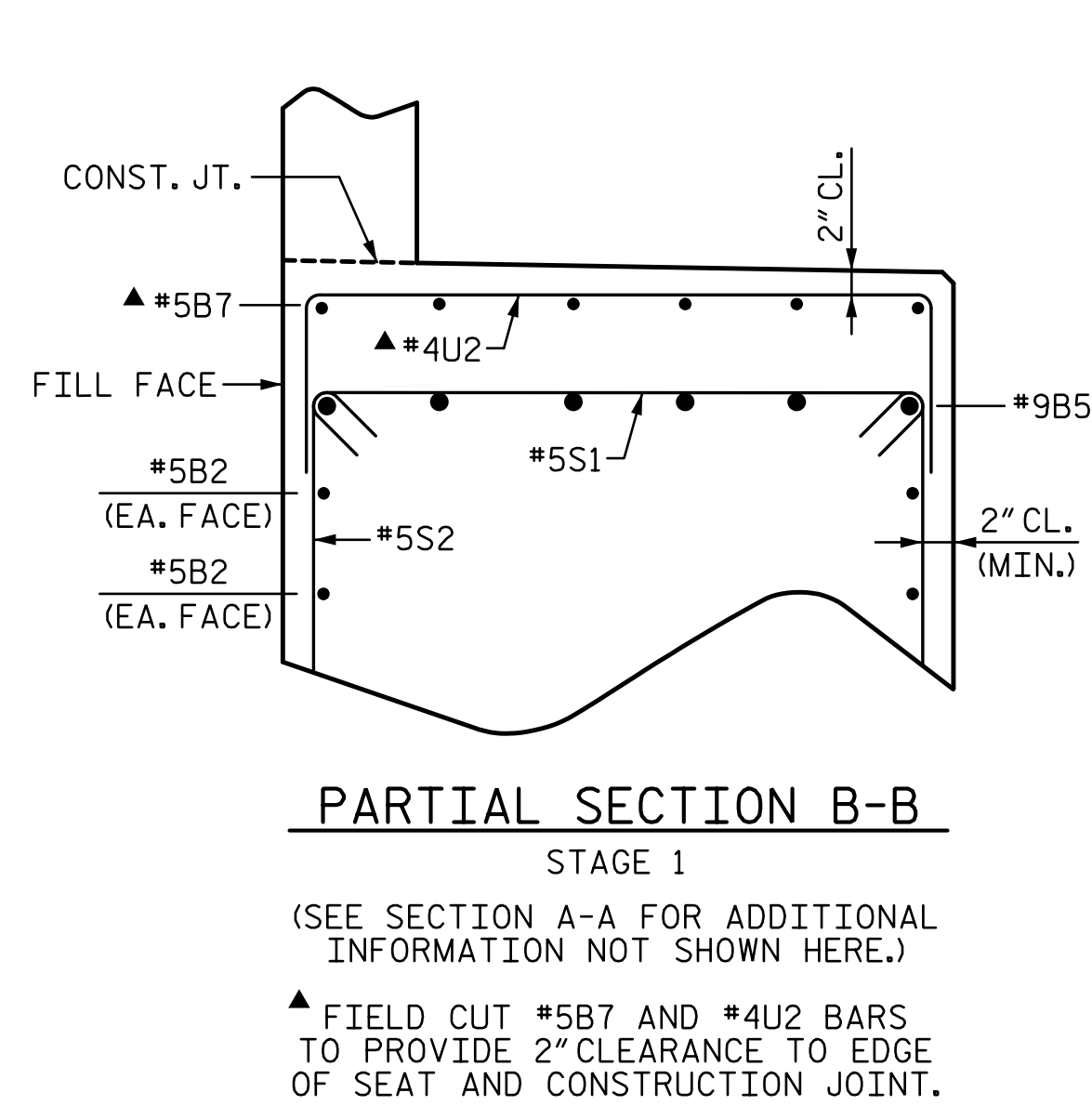
SECTION A-A
STAGE 1



SECTION C-C
STAGE 2

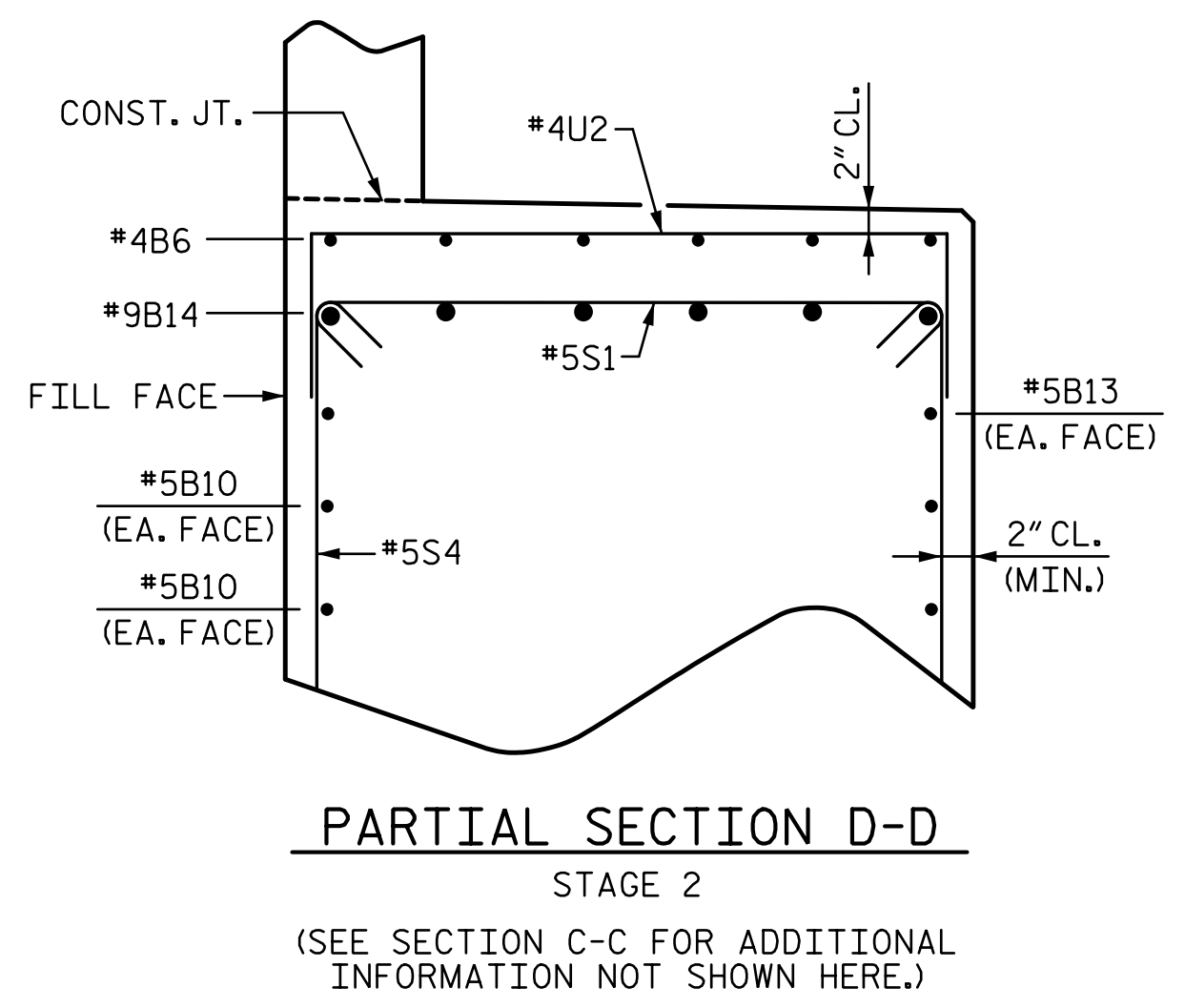


SECTION F-F
STAGE 3



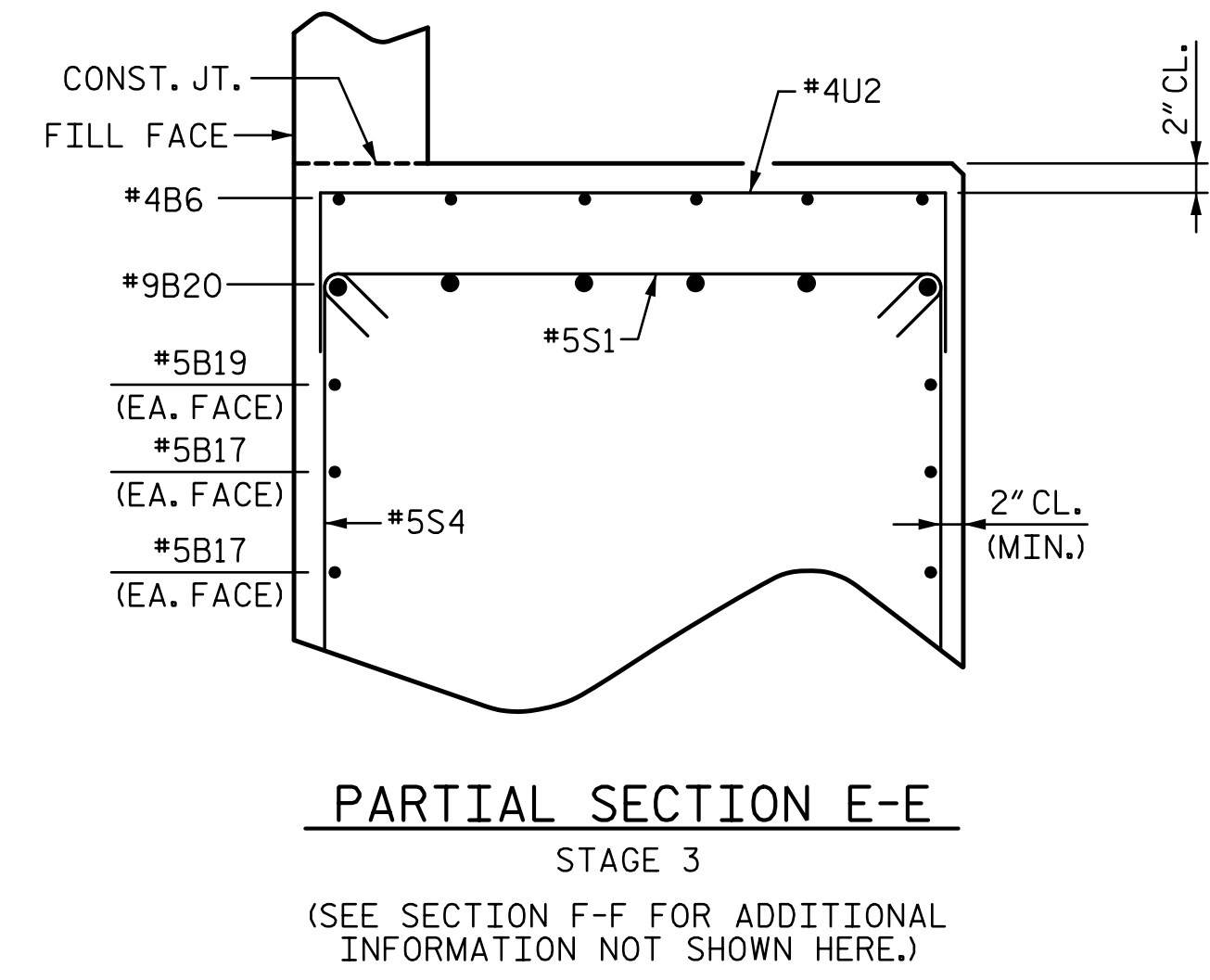
PARTIAL SECTION B-B
STAGE 1

(SEE SECTION A-A FOR ADDITIONAL INFORMATION NOT SHOWN HERE.)
▲ FIELD CUT #5B7 AND #4U2 BARS TO PROVIDE 2" CLEARANCE TO EDGE OF SEAT AND CONSTRUCTION JOINT.



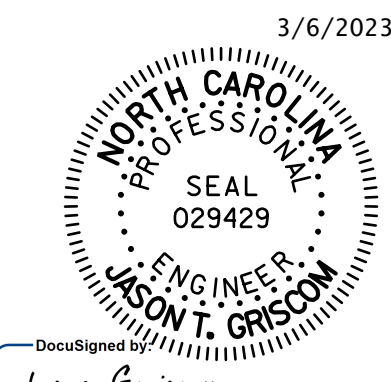
PARTIAL SECTION D-D
STAGE 2

(SEE SECTION C-C FOR ADDITIONAL INFORMATION NOT SHOWN HERE.)



PARTIAL SECTION E-E
STAGE 3

(SEE SECTION F-F FOR ADDITIONAL INFORMATION NOT SHOWN HERE.)



STV ENGINEERS, INC.
900 West Trade St., Suite 715
Charlotte, NC 28202
NC License Number F-0991

DOCUMENT NOT CONSIDERED FINAL UNLESS ALL SIGNATURES COMPLETED

PROJECT NO. B-5808
CABARRUS COUNTY
STATION: 20+64.00 -L-
SHEET 4 OF 6

REVISIONS				SHEET NO.
NO.	BY:	DATE:	NO.	DATE:
1			3	
2			4	
				S-56
				TOTAL SHEETS 65

END BENT 2