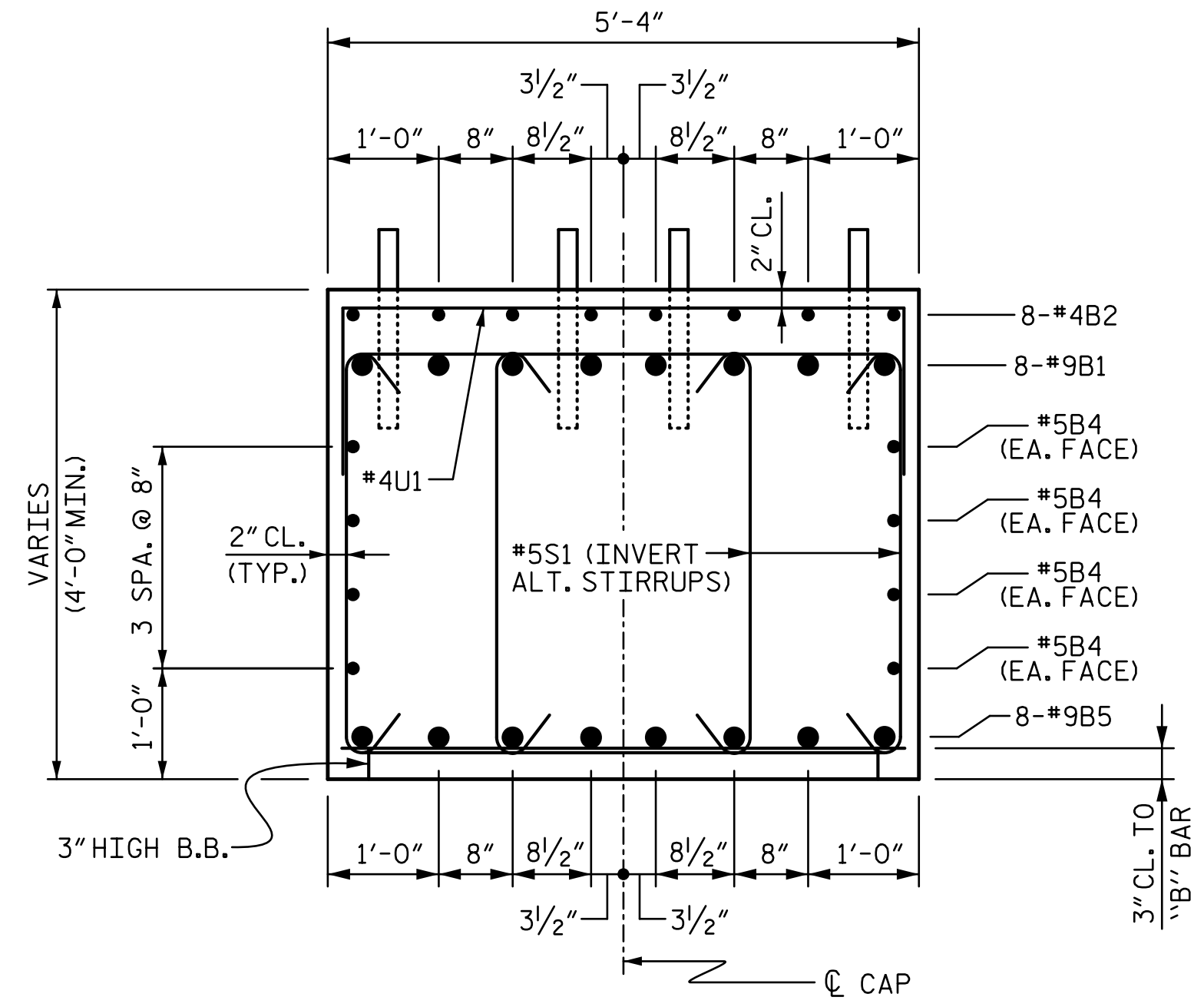
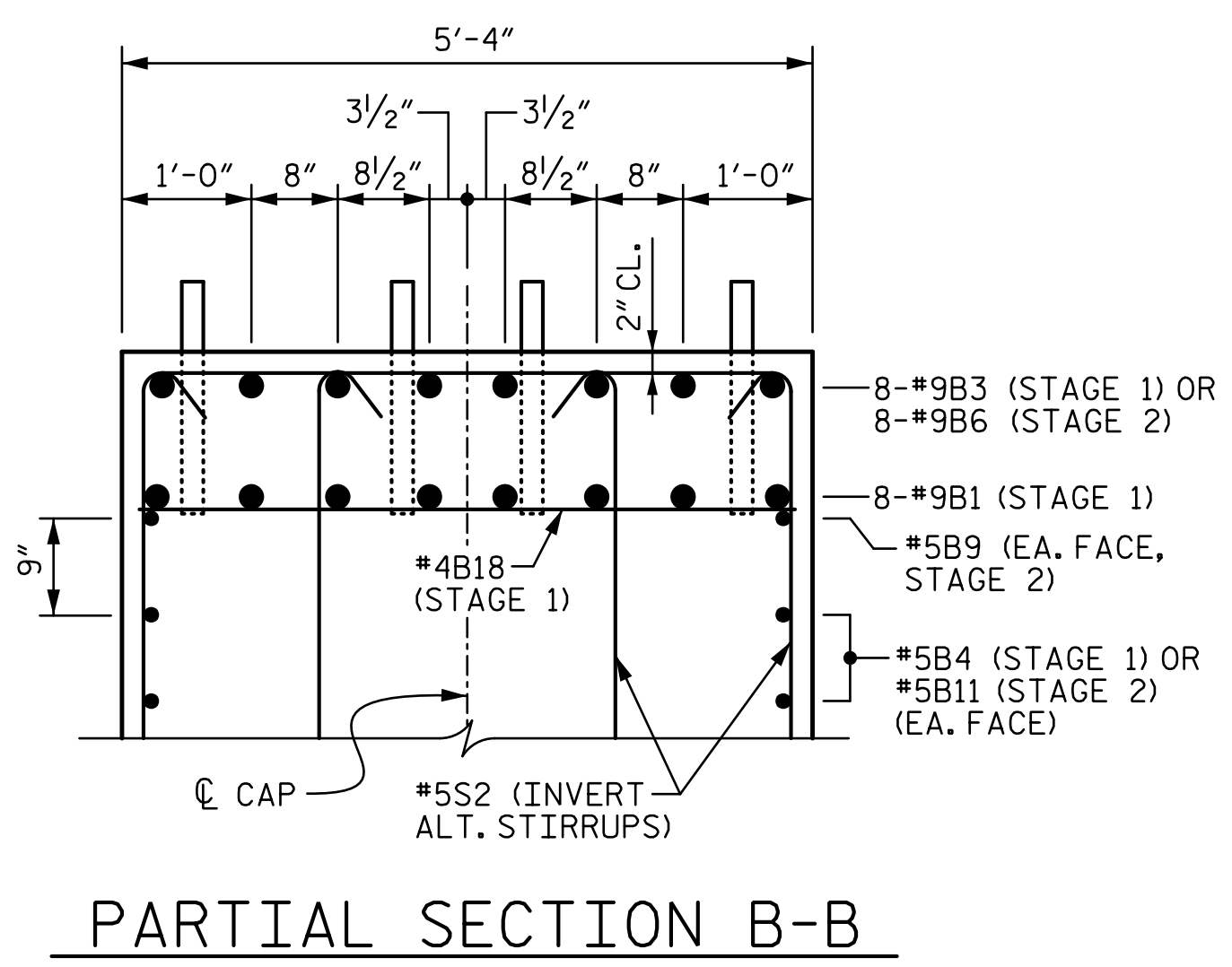


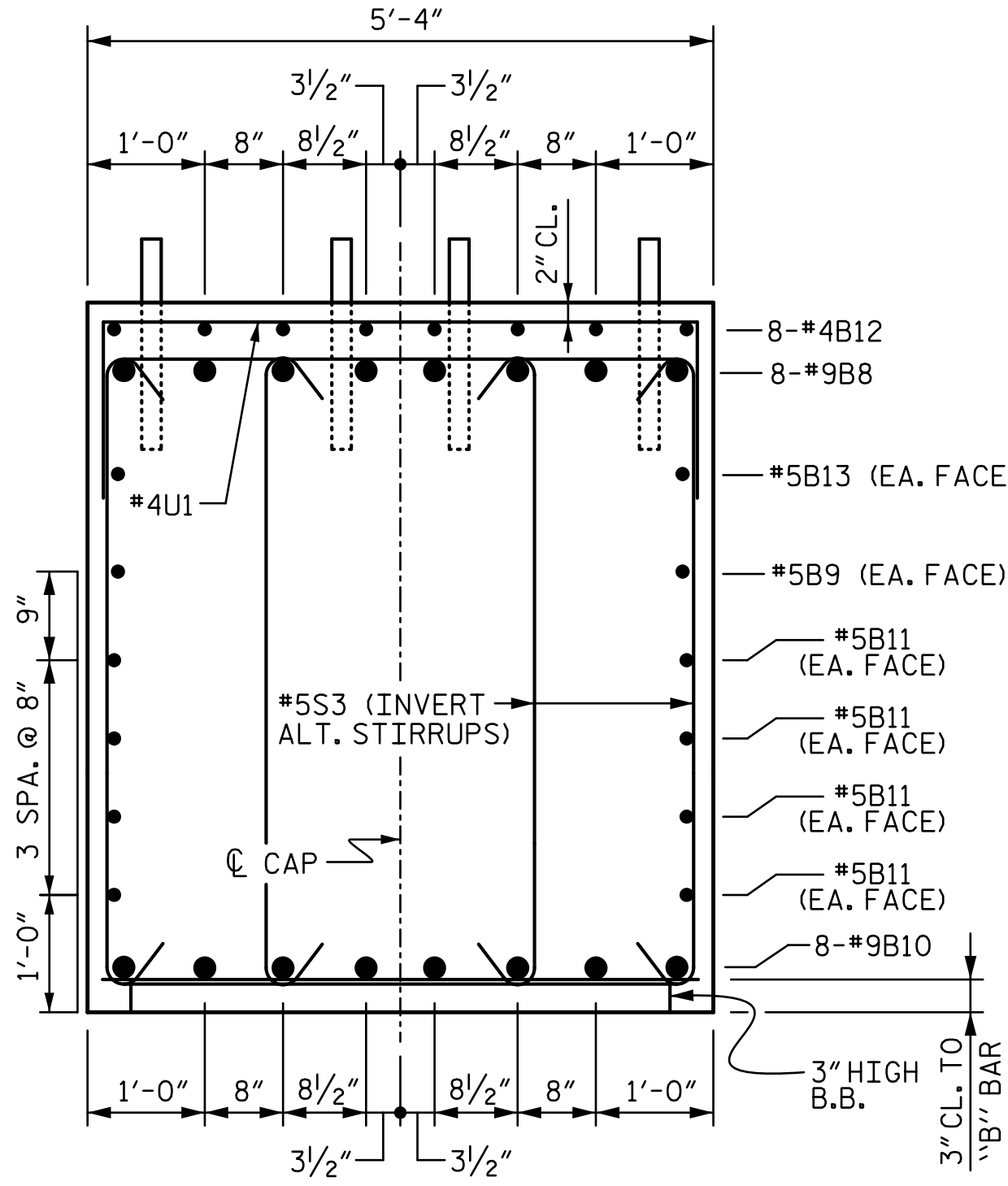
R:\Structures\04_Justation\05 RFC Bridge Plans\401_IOL\B5808_SML\B3_051_20057.dgn 3/6/2023 10:59:27 AM HensleySC



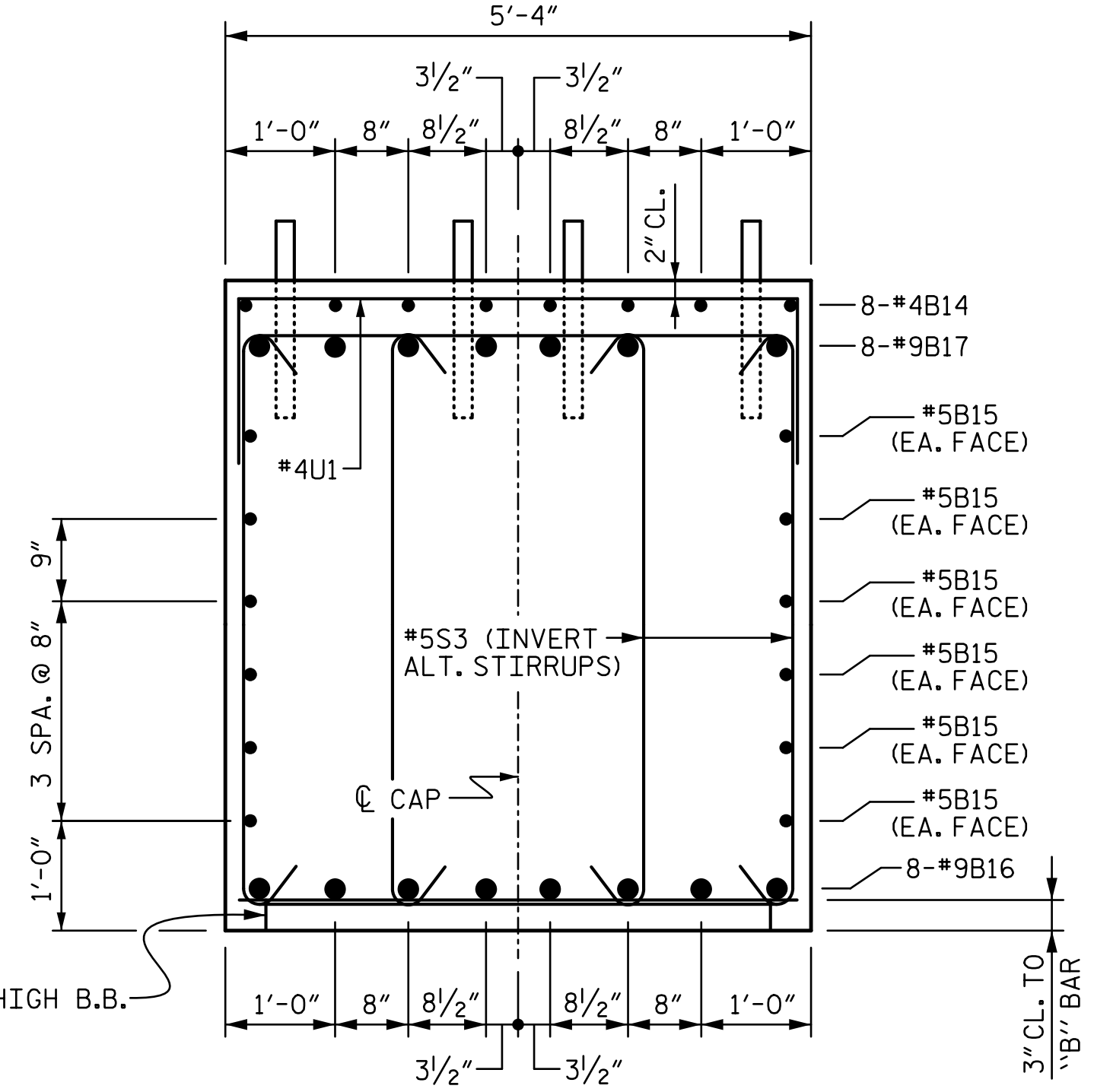
SECTION A-A



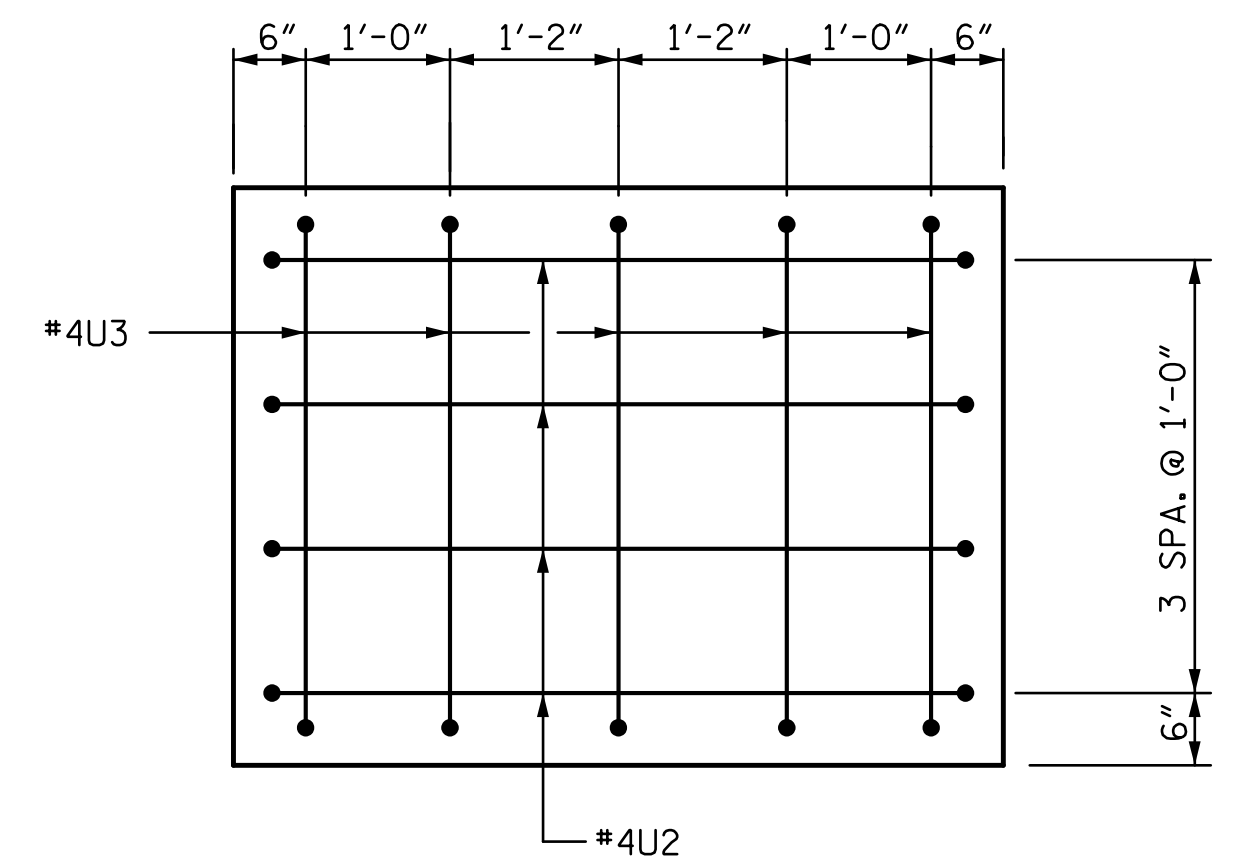
PARTIAL SECTION B-B



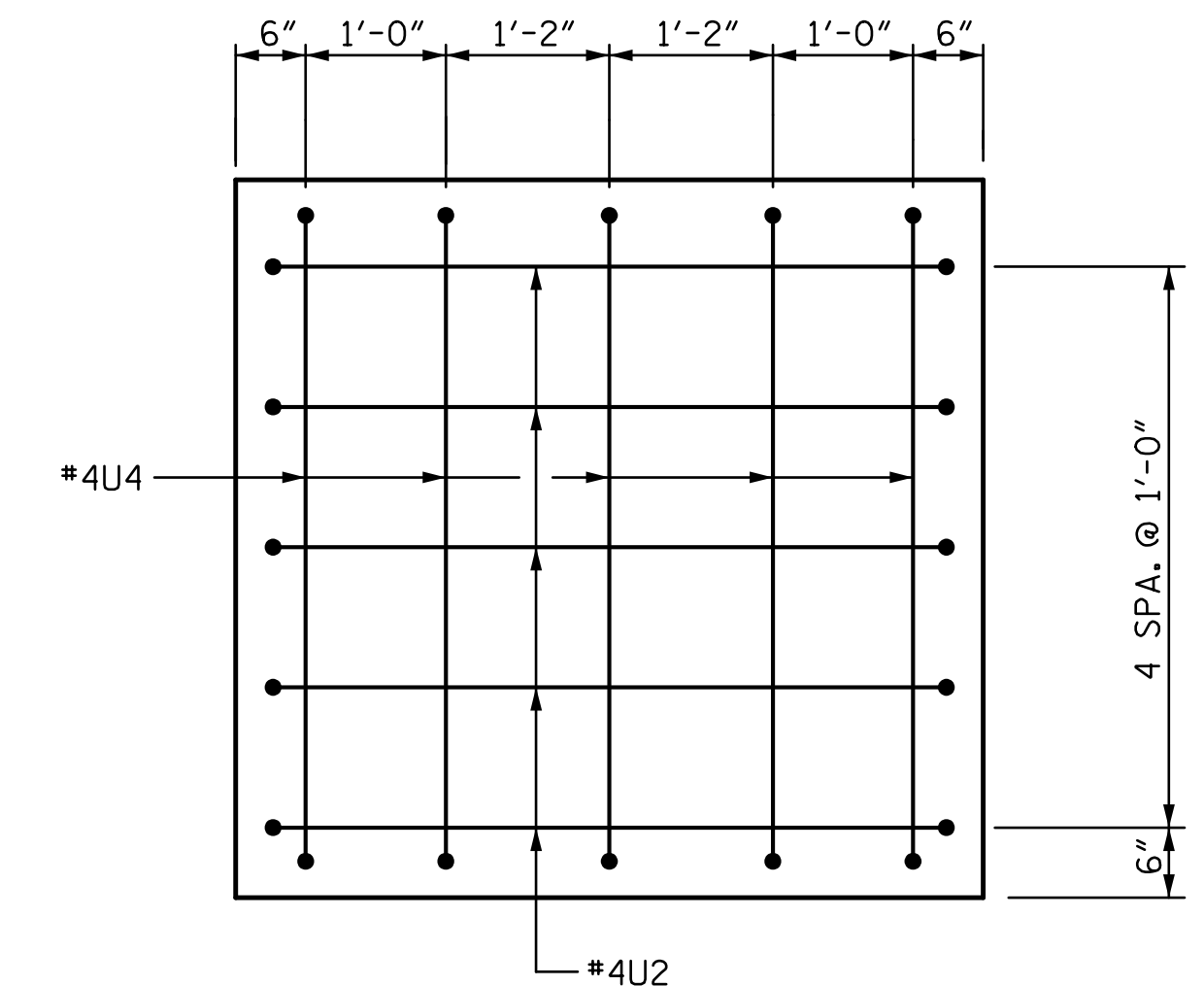
SECTION C-C



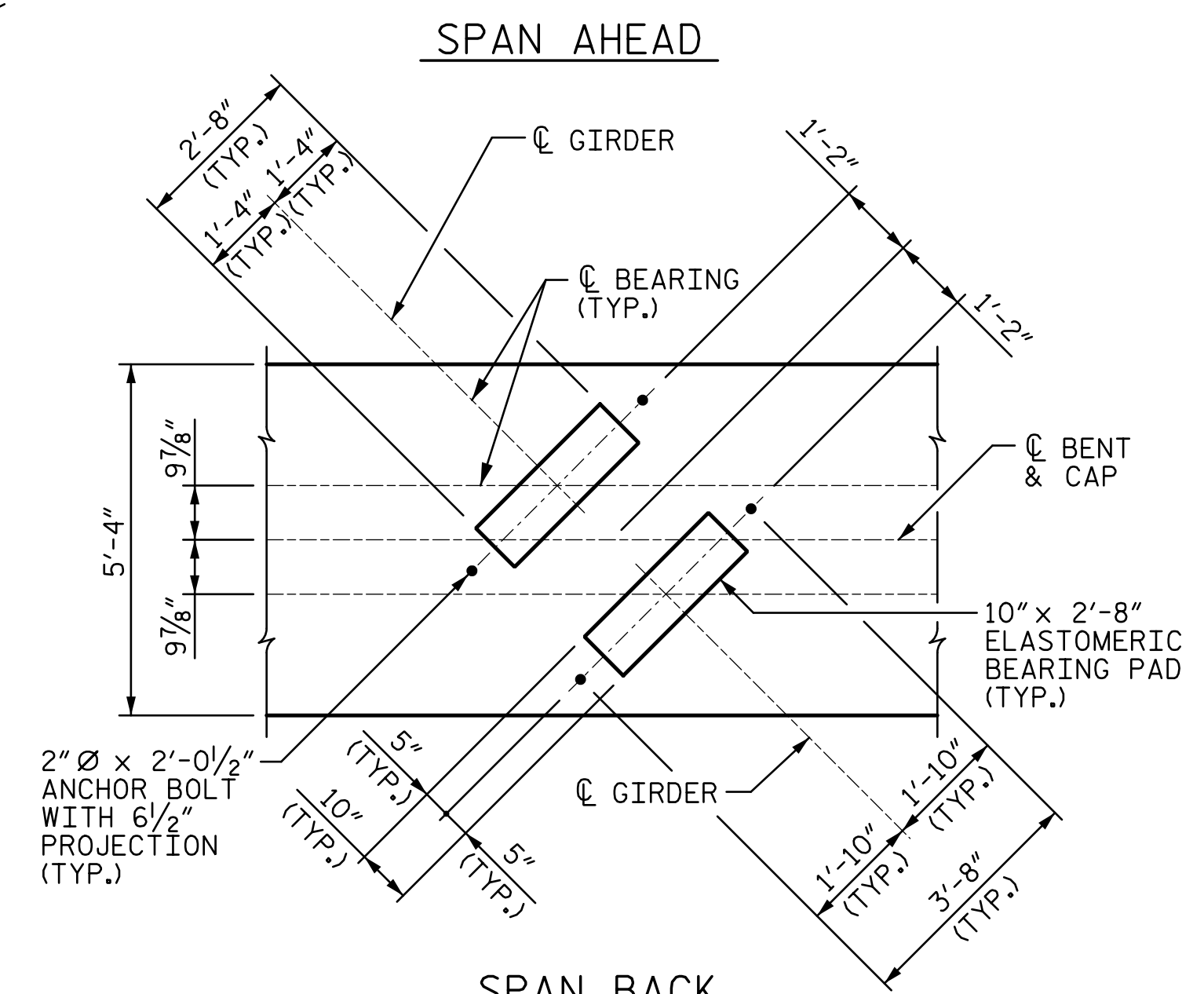
SECTION D-D



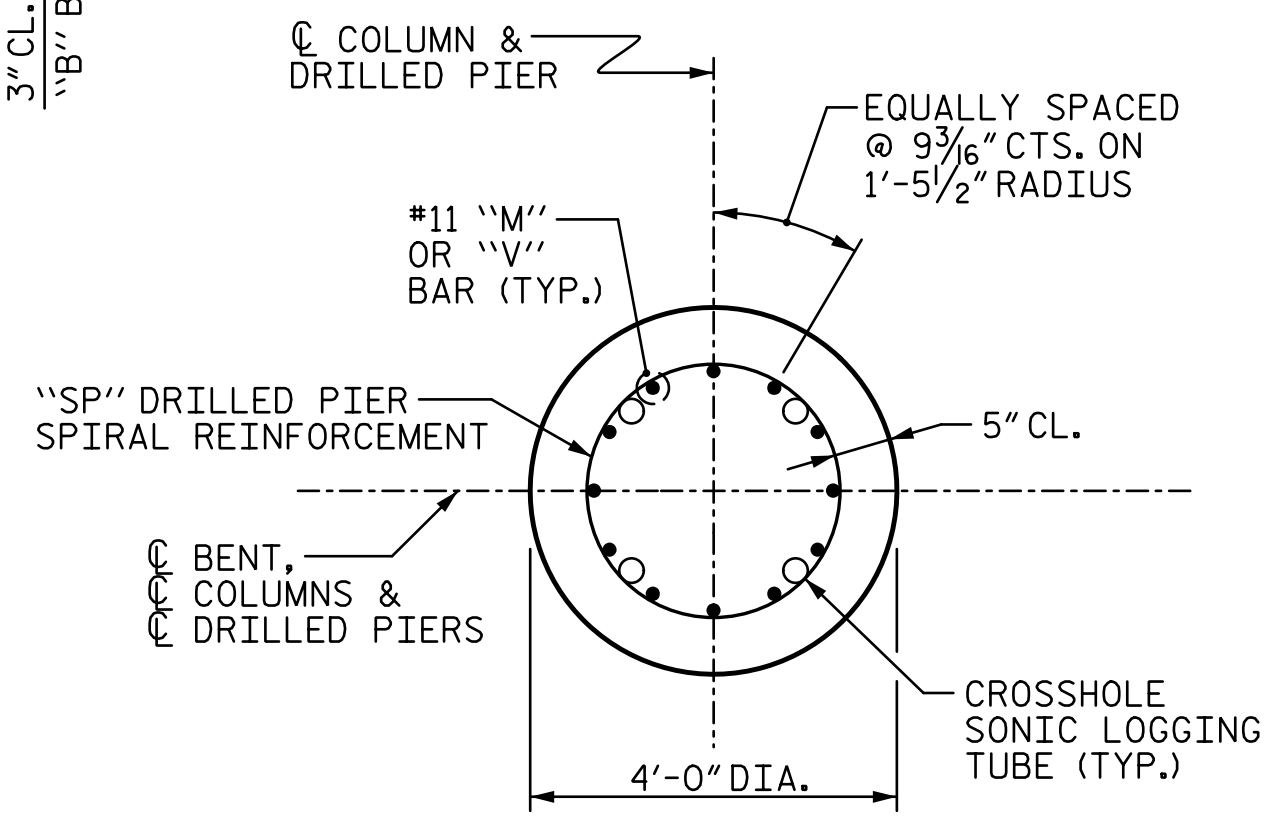
END VIEW E-E



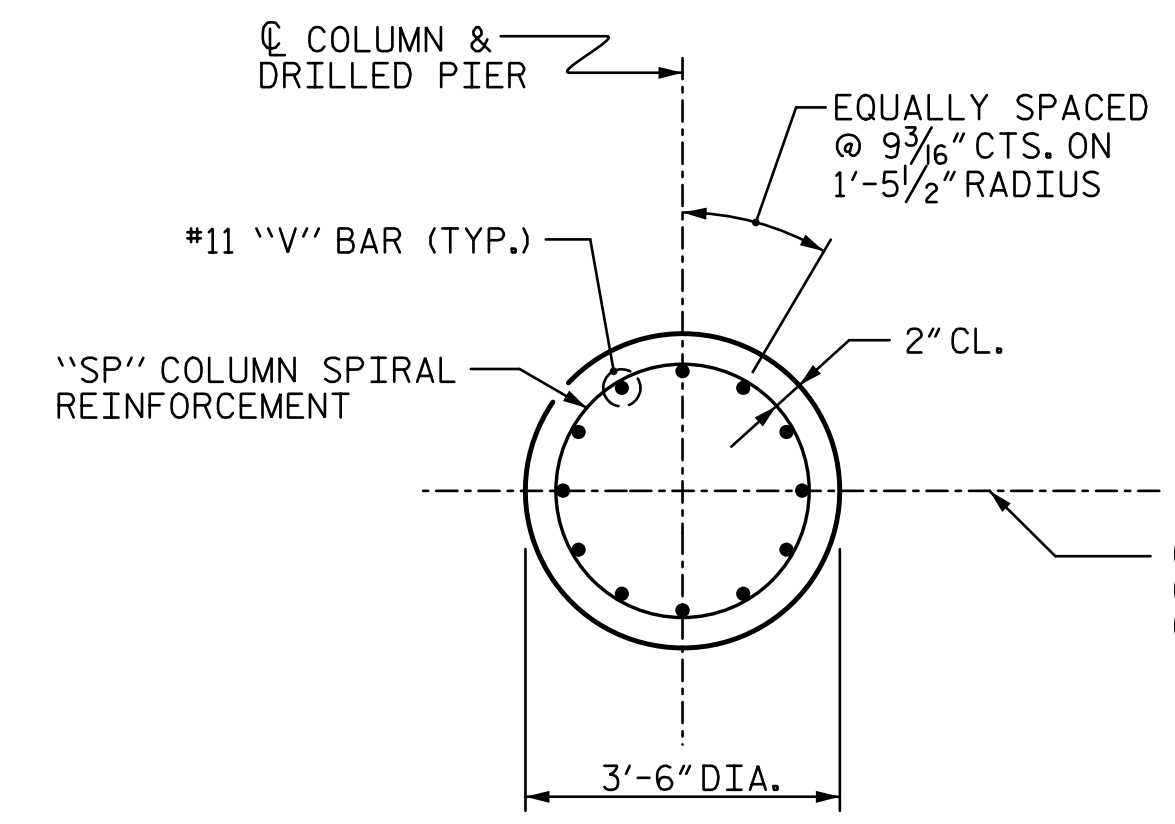
END VIEW F-F



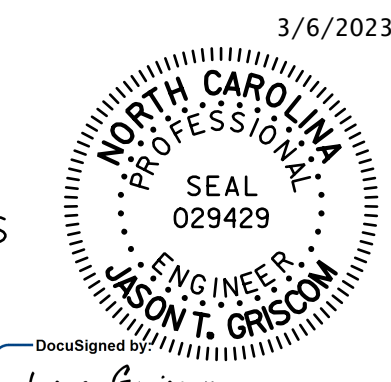
SPAN BACK DETAIL 'A' (TYPICAL EACH GIRDER LINE)



TYPICAL SECTION THROUGH DRILLED PIER



TYPICAL SECTION THROUGH COLUMN



STV ENGINEERS, INC.
 900 West Trade St., Suite 715
 Charlotte, NC 28202
 NC License Number F-0991

DOCUMENT NOT CONSIDERED
 FINAL UNLESS ALL
 SIGNATURES COMPLETED

PROJECT NO. **B-5808**
CABARRUS COUNTY
 STATION: **20+64.00 -L-**
 SHEET 3 OF 4

STATE OF NORTH CAROLINA DEPARTMENT OF TRANSPORTATION RALEIGH					
BENTS 1 & 2					
REVISIONS					SHEET NO.
NO.	BY:	DATE:	NO.	BY:	DATE:
1			3		
2			4		
					TOTAL SHEETS 65