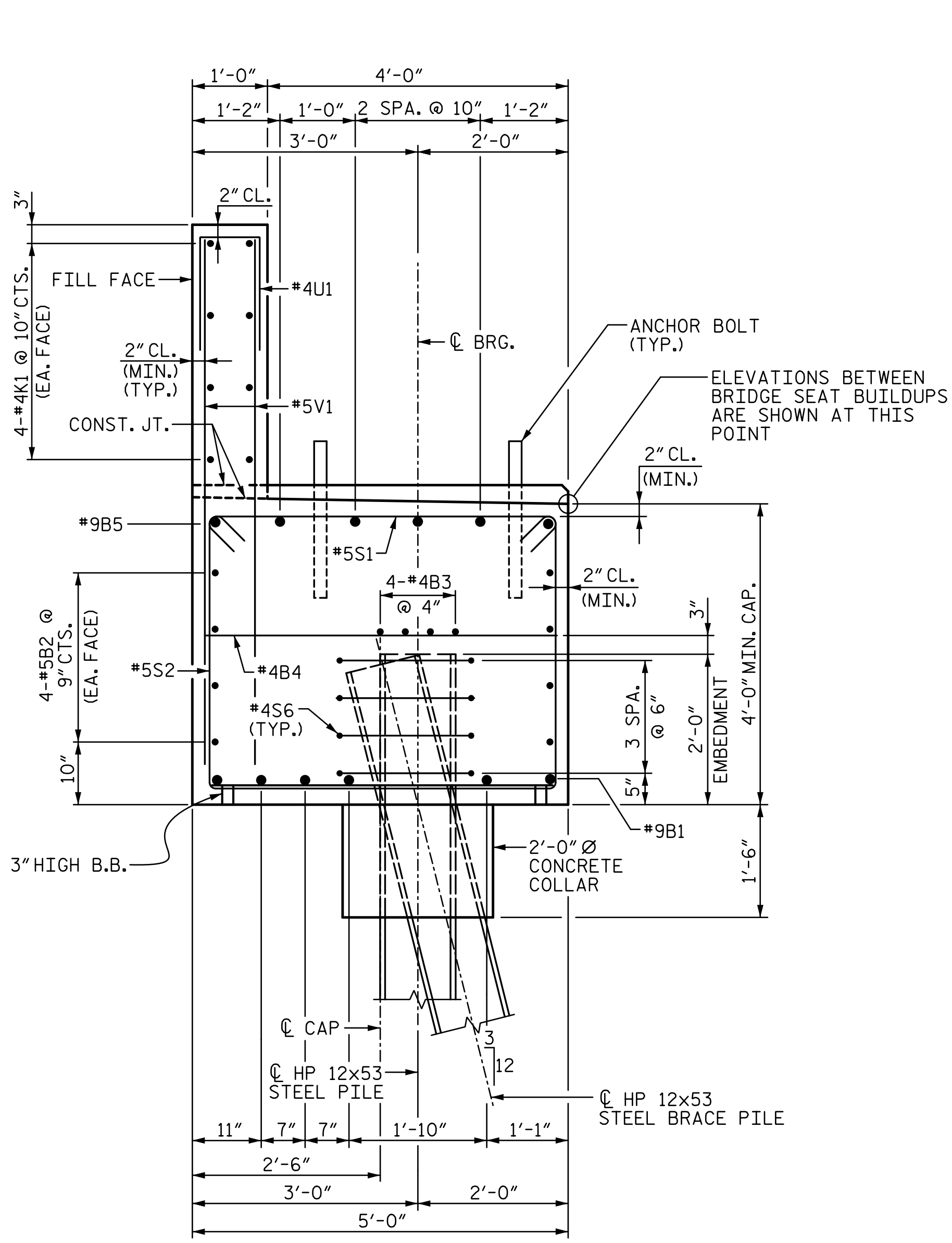
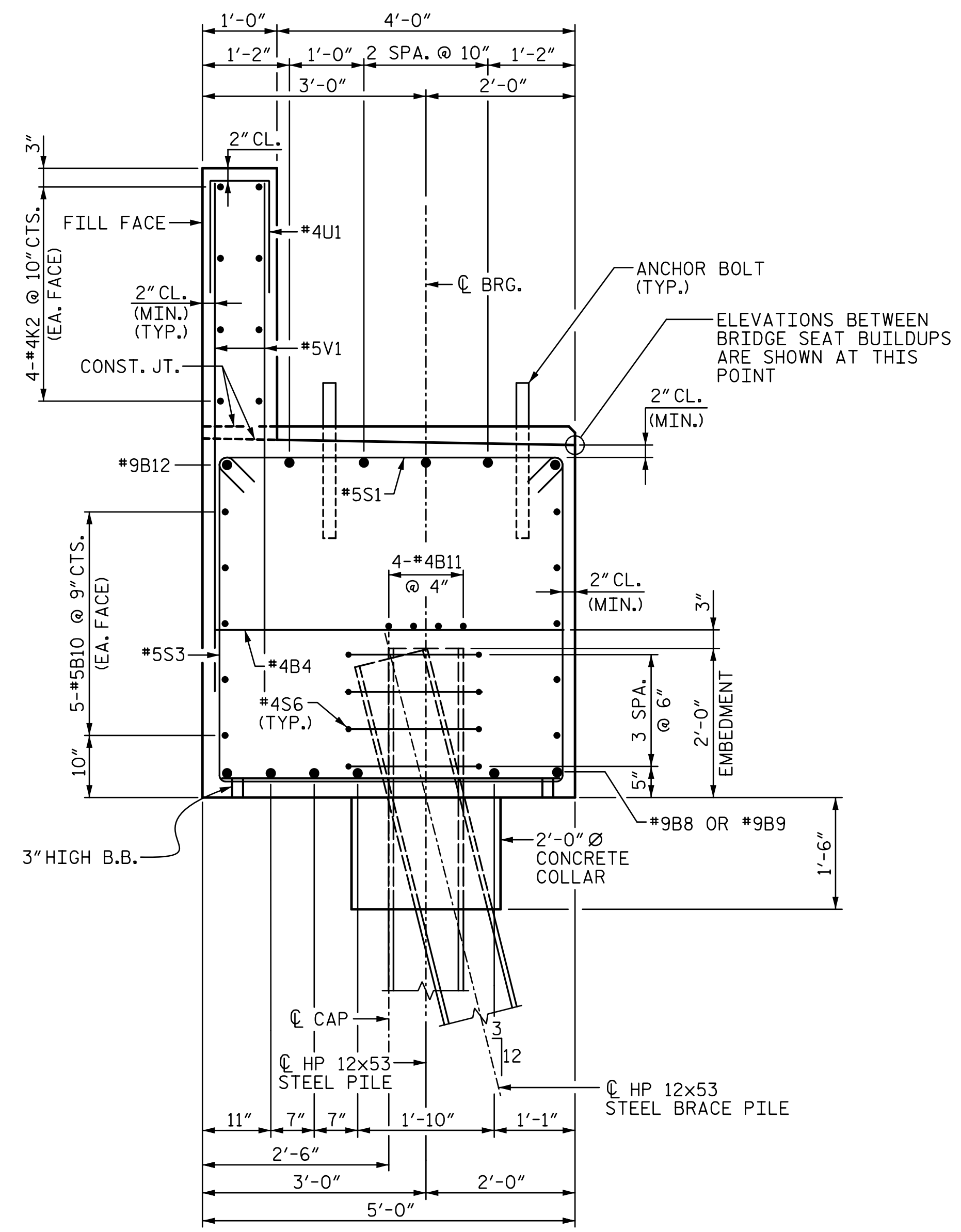


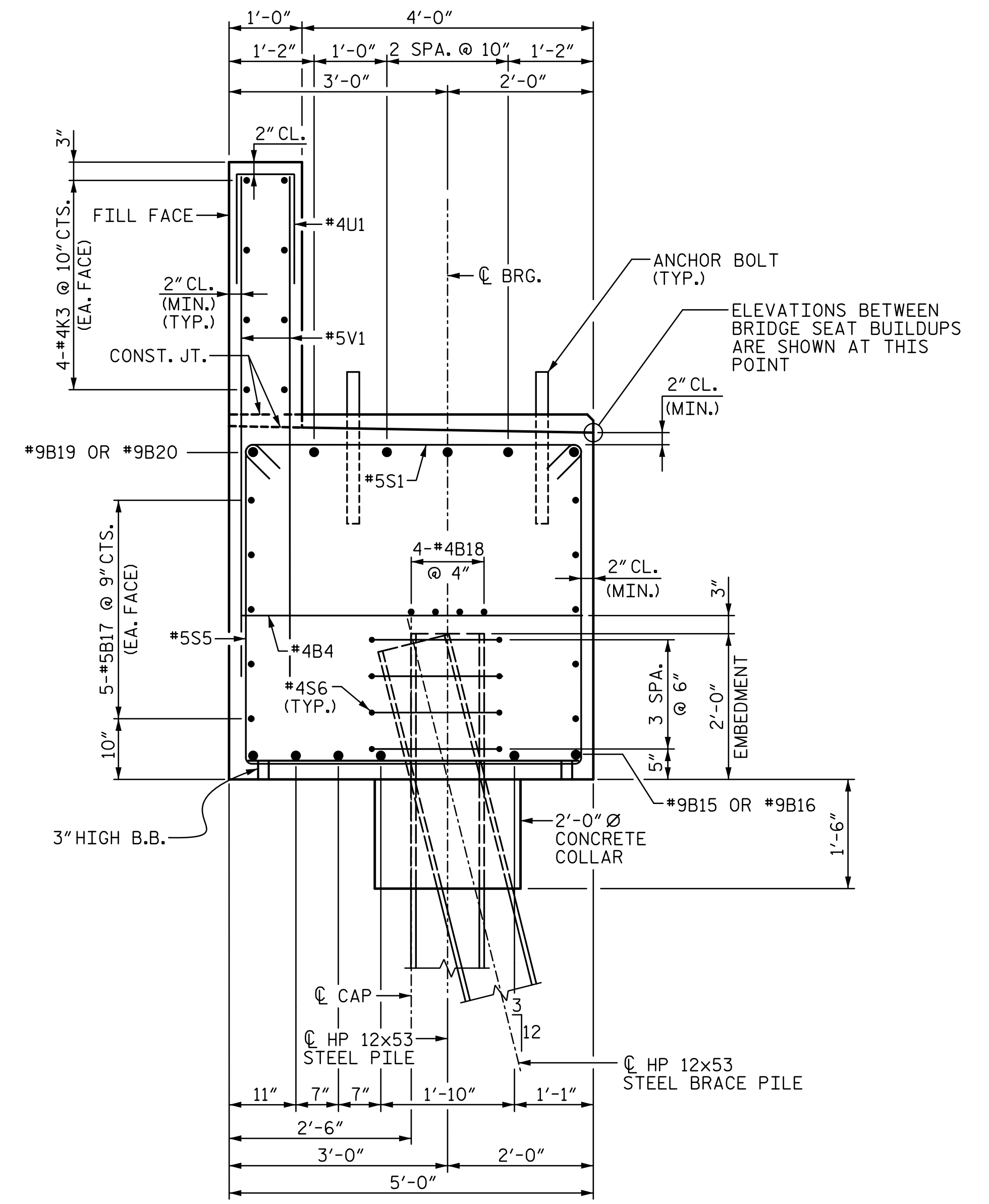
R:\Structures\04\_Station\05 RFC Bridge Plans\401\_091\_B5808\_SMU\_E14\_046\_120057.dgn 10:57:05 AM 3/6/2023 HensleSC



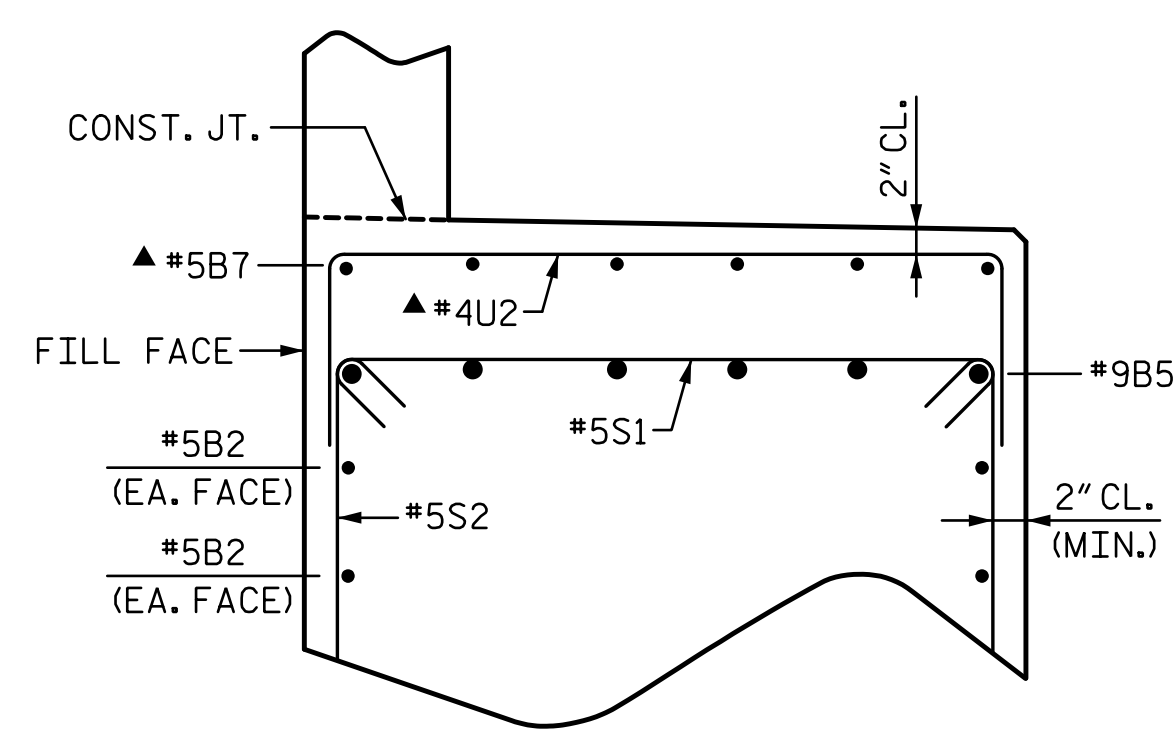
SECTION A-A  
STAGE 1



SECTION C-C  
STAGE 2

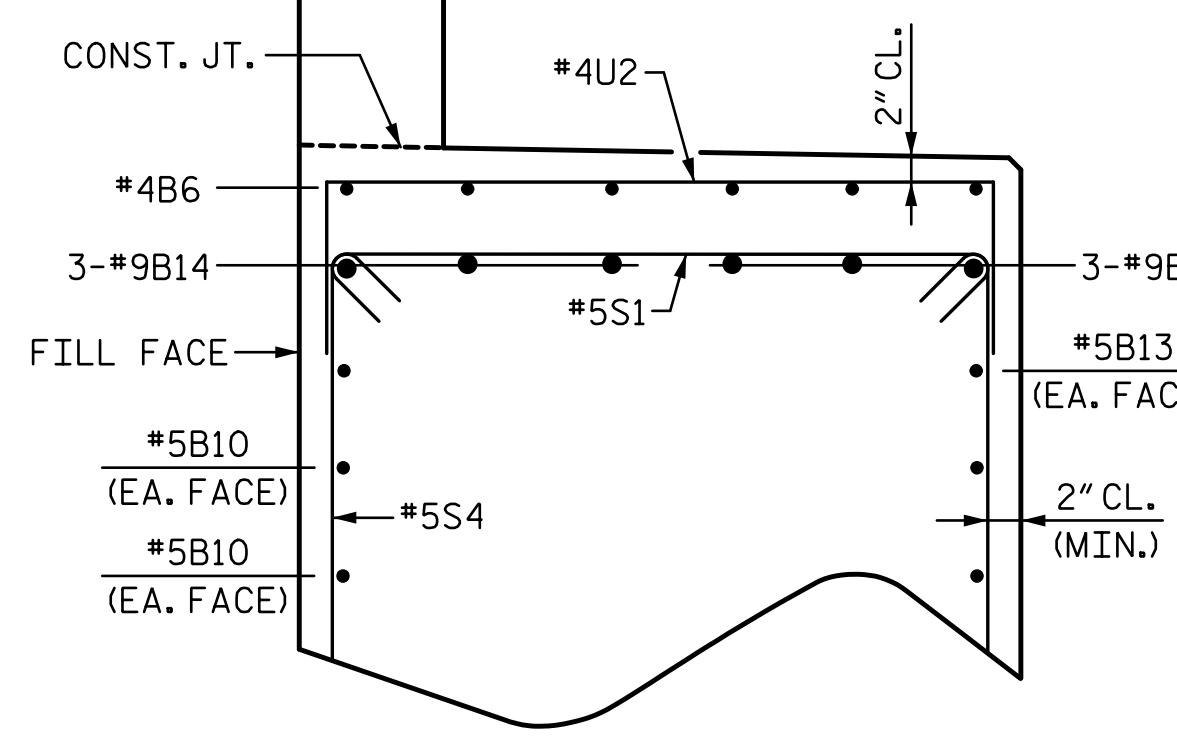


SECTION F-F  
STAGE 3



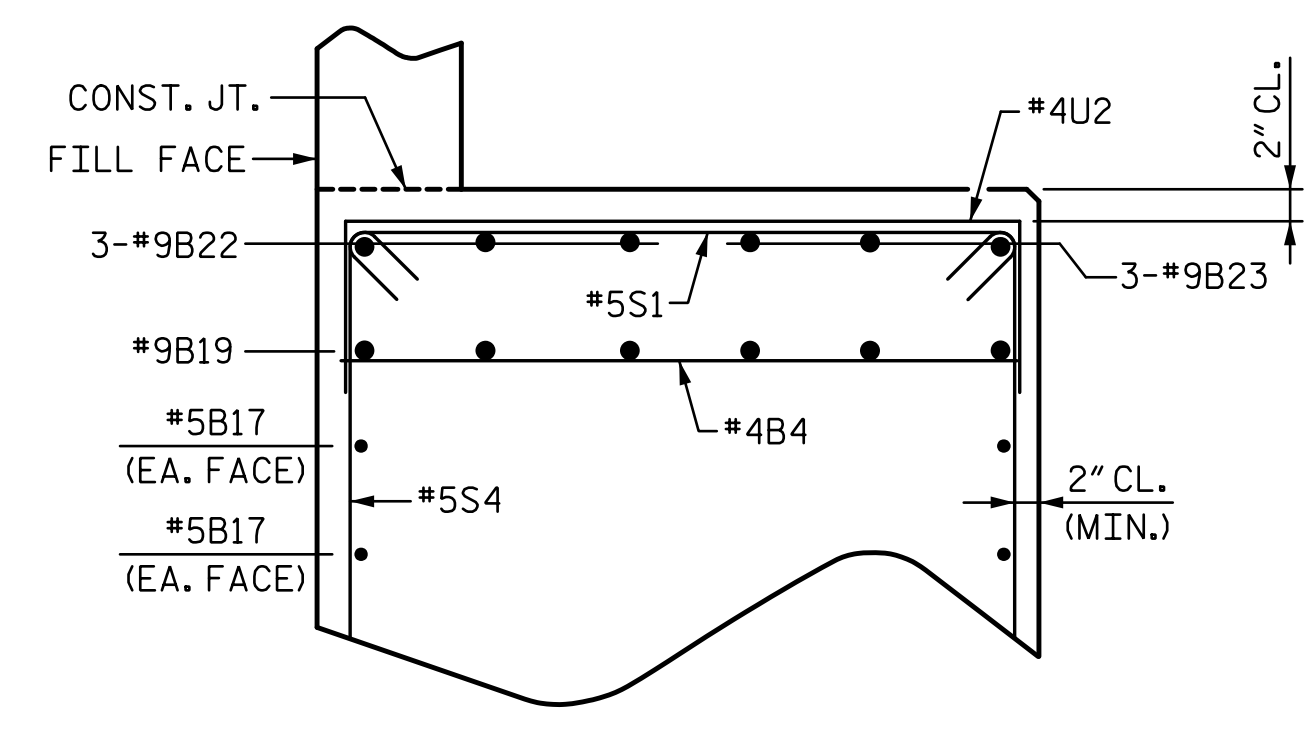
PARTIAL SECTION B-B  
STAGE 1

(SEE SECTION A-A FOR ADDITIONAL INFORMATION NOT SHOWN HERE.)  
▲ FIELD CUT #5B7 AND #4U2 BARS TO PROVIDE 2" CLEARANCE TO EDGE OF SEAT AND CONSTRUCTION JOINT.



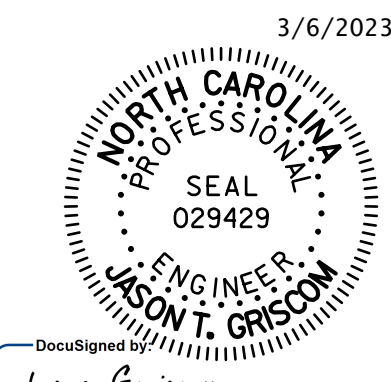
PARTIAL SECTION D-D  
STAGE 2

(SEE SECTION C-C FOR ADDITIONAL INFORMATION NOT SHOWN HERE.)



PARTIAL SECTION E-E  
STAGE 3

(SEE SECTION F-F FOR ADDITIONAL INFORMATION NOT SHOWN HERE.)



STV ENGINEERS, INC.  
900 West Trade St., Suite 715  
Charlotte, NC 28202  
NC License Number F-0991

DOCUMENT NOT CONSIDERED FINAL UNLESS ALL SIGNATURES COMPLETED

PROJECT NO. B-5808  
CABARRUS COUNTY  
STATION: 20+64.00 -L-  
SHEET 4 OF 6

STATE OF NORTH CAROLINA DEPARTMENT OF TRANSPORTATION RALEIGH					
END BENT 1					
REVISIONS					SHEET NO.
NO.	BY:	DATE:	NO.	BY:	DATE:
1			3		
2			4		
					TOTAL SHEETS 65