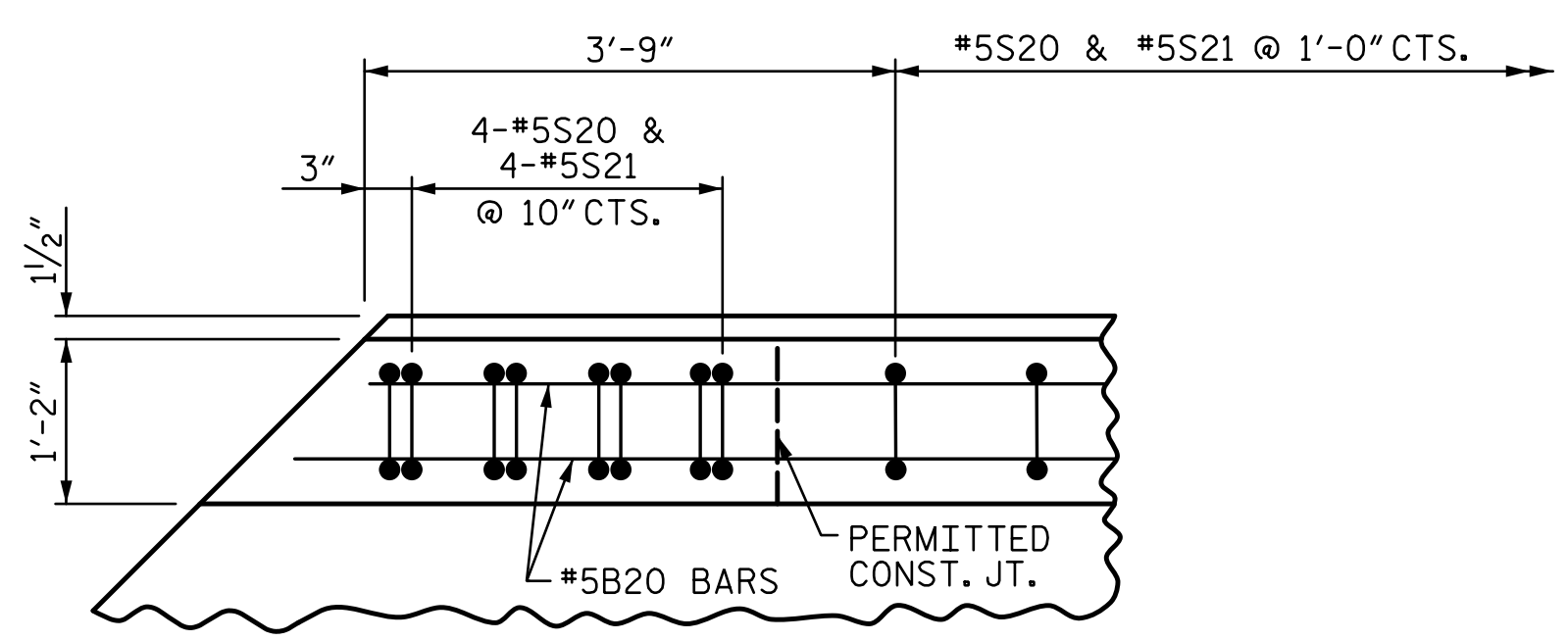
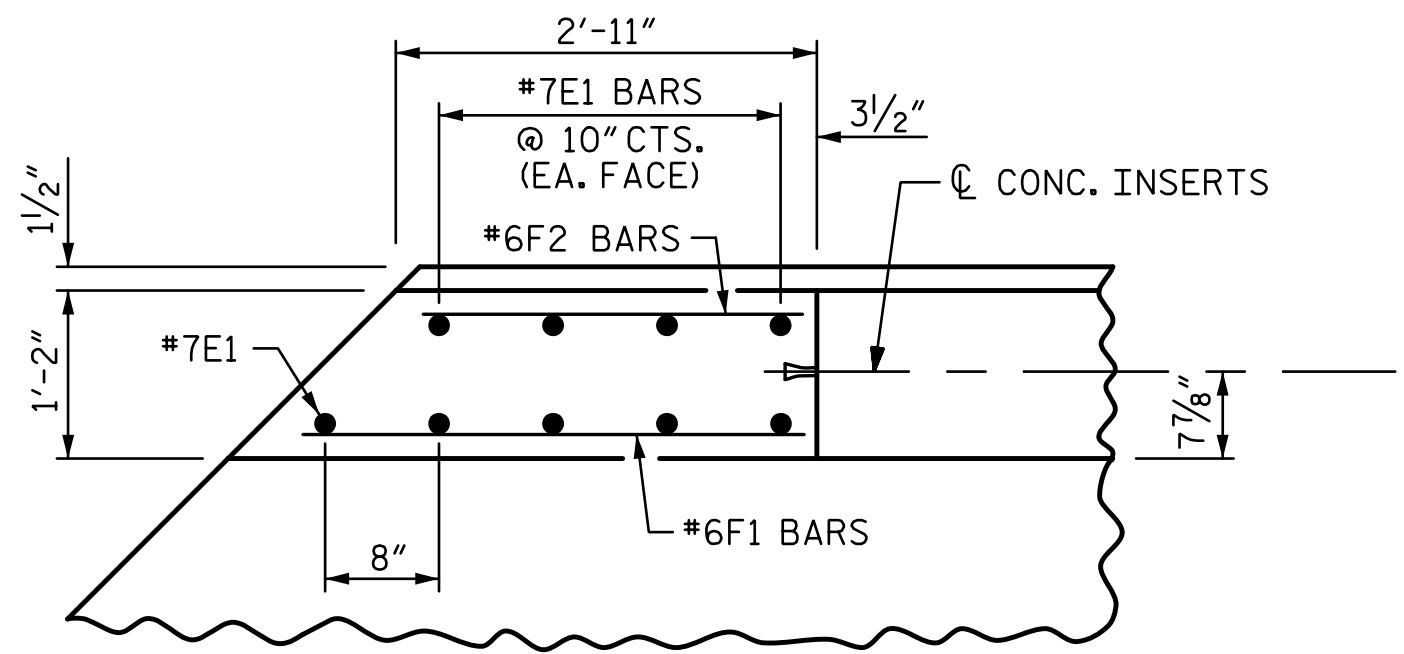


R:\Structures\04_Justation\05 RFC Bridge Plans\401_059_B5808_SMU_CPL_030_120057.dgn 3/6/2023 10:41:53 AM HensleSC

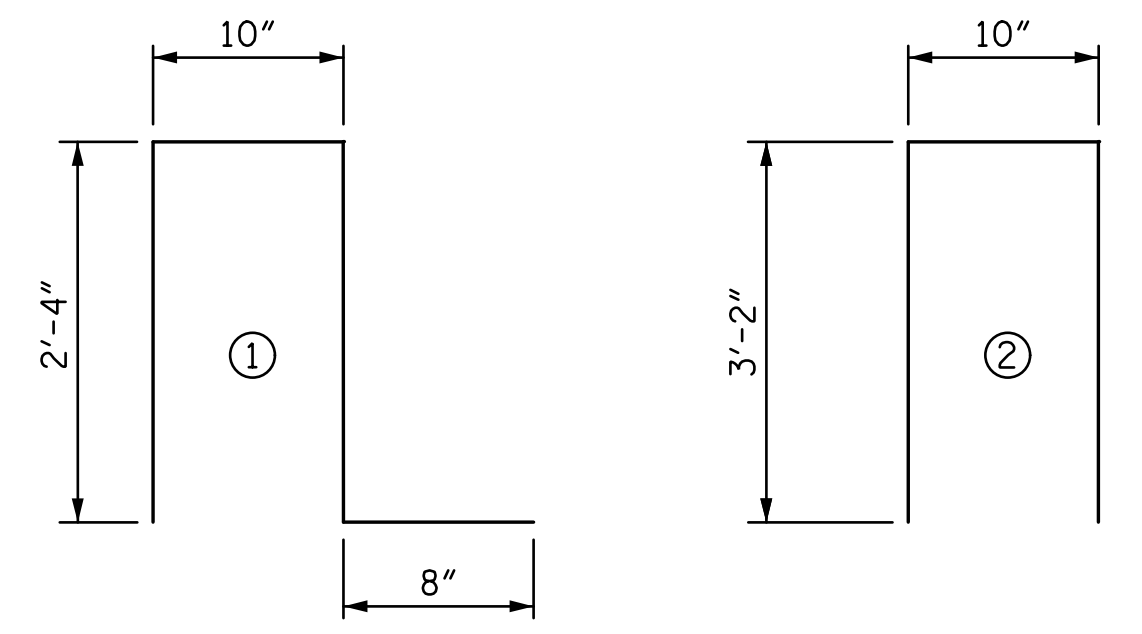


PLAN OF PARAPET



PLAN OF END BLOCK

BAR TYPES



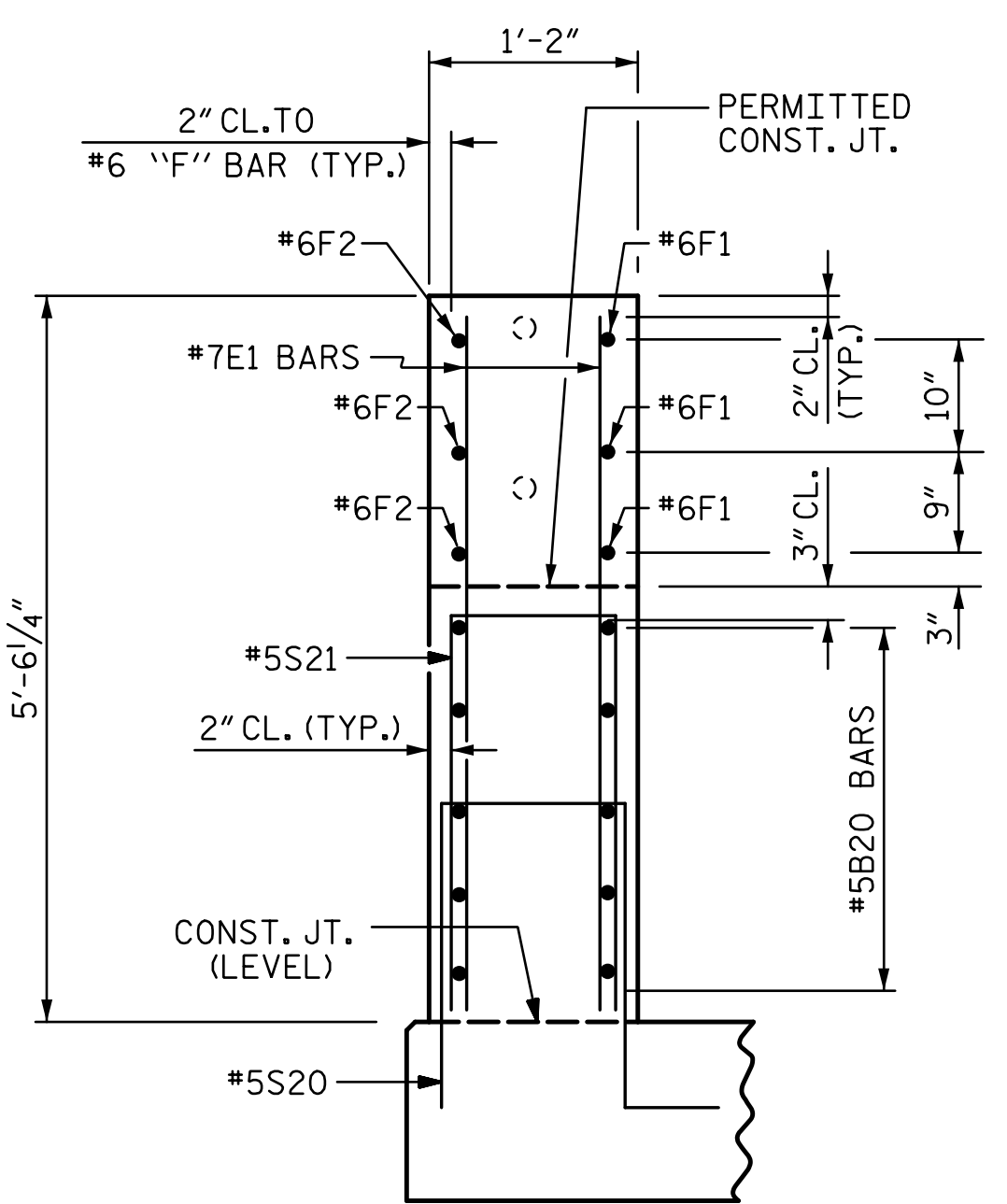
ALL BAR DIMENSIONS ARE OUT TO OUT.

BILL FOR CONCRETE PARAPET AND END BLOCKS PER STAGE (2 STAGES REQ'D.)					
MARK	NO.	SIZE	TYPE	LENGTH	WEIGHT
* B20	40	#5	STR	16'-1"	671
* B21	50	#5	STR	25'-4"	1,321
* E1	18	#7	STR	5'-2"	190
* F1	6	#6	STR	3'-4"	30
* F2	6	#6	STR	2'-8"	24
* S20	187	#5	1	6'-2"	1,203
* S21	187	#5	2	7'-2"	1,398
* EPOXY COATED REINFORCING STEEL				LBS.	4,837
CLASS AA CONCRETE				CU. YARDS	27.7
1'-2" X 3'-4 1/4" CONCRETE PARAPET				LIN. FT.	186.9

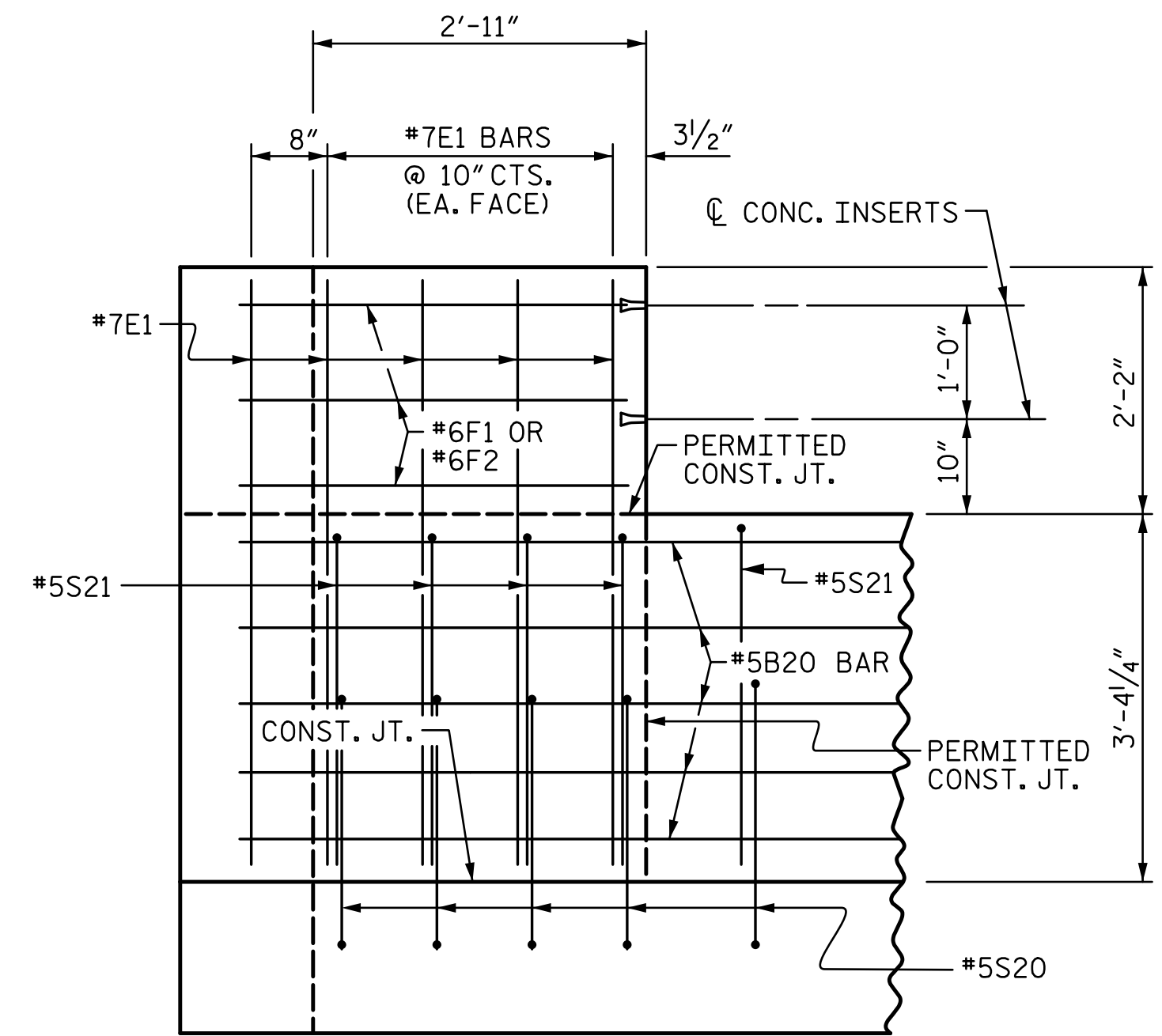
QUANTITIES DO NOT INCLUDE END POSTS ON THE APPROACH SLABS. FOR END POSTS ON APPROACH SLABS, SEE 'APPROACH SLAB DETAILS (SHEET 6 OF 6)'.
 CONCRETE PARAPET AND END BLOCKS SHALL NOT BE CAST UNTIL ALL SLAB CONCRETE HAS BEEN CAST AND REACHED A MINIMUM COMPRESSIVE STRENGTH OF 3,000 PSI.
 TEMPORARY DRAIN BLOCK OUTS ON LEFT SIDE SHALL BE FILLED WITH AN APPROVED GROUT IN STAGE 4.
 ALL COSTS ASSOCIATED WITH PLACING AND FILLING THE TEMPORARY DRAIN BLOCK OUTS SHALL BE INCLUDED IN THE UNIT PRICE BID FOR '1'-2" X 3'-4 1/4" CONCRETE PARAPET'.
 ALL COSTS ASSOCIATED WITH CONSTRUCTING THE END BLOCKS SHALL BE INCLUDED IN THE UNIT PRICE BID FOR '1'-2" X 3'-4 1/4" CONCRETE PARAPET'.

NOTES:

ALL REINFORCING STEEL IN CONCRETE PARAPET SHALL BE EPOXY COATED.
 GROOVED CONTRACTION JOINTS, 1/2" IN DEPTH, SHALL BE TOOLED IN ALL EXPOSED FACES OF THE PARAPET AND IN ACCORDANCE WITH ARTICLE 825-10(B) OF THE STANDARD SPECIFICATIONS. A CONTRACTION JOINT SHALL BE LOCATED AT EACH THIRD POINT BETWEEN PARAPET EXPANSION JOINTS. ONLY ONE CONTRACTION JOINT IS REQUIRED AT MIDPOINT OF PARAPET SEGMENTS LESS THAN 20 FEET IN LENGTH AND NO CONTRACTION JOINTS ARE REQUIRED FOR SEGMENTS LESS THAN 10 FEET IN LENGTH.



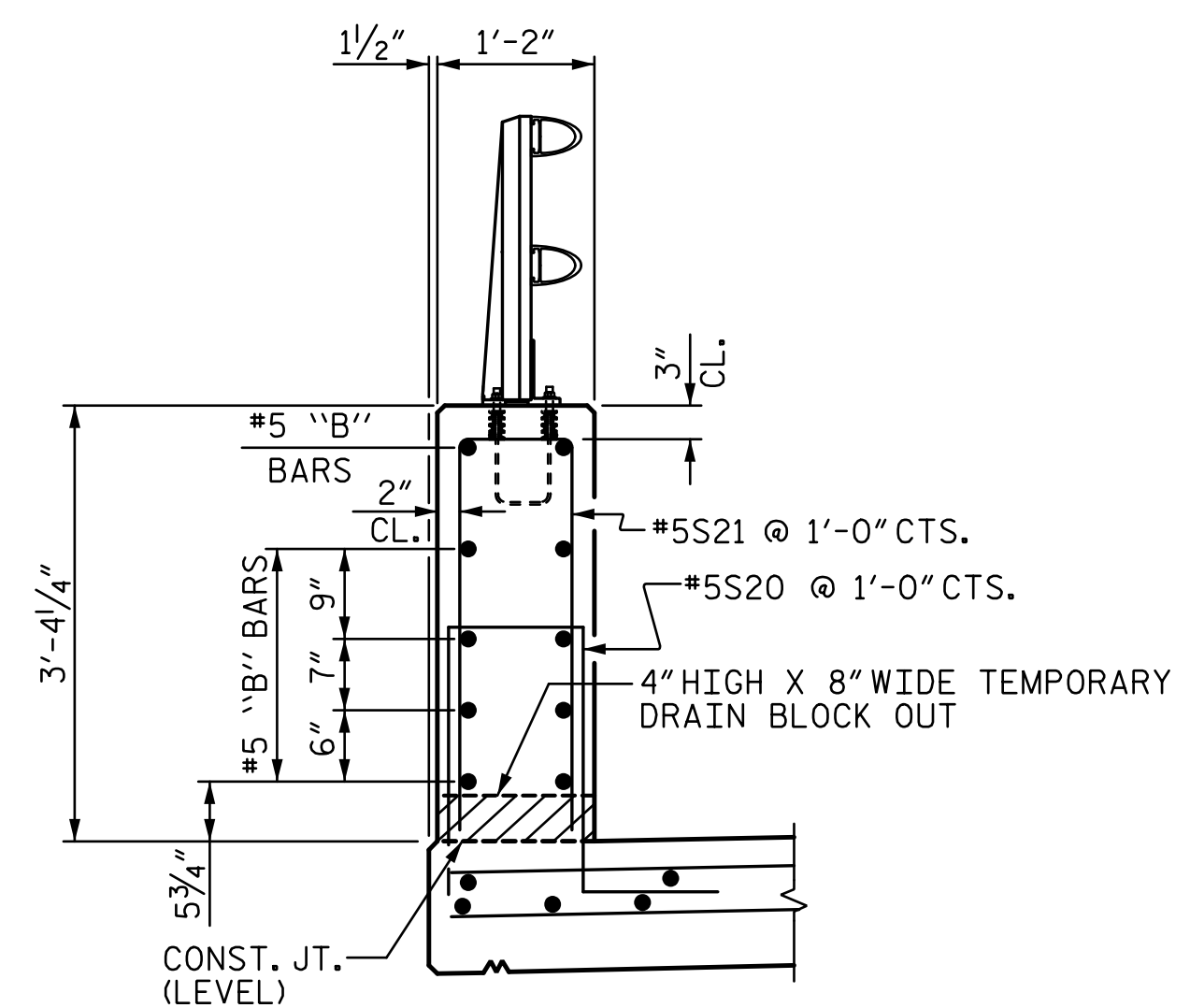
END VIEW



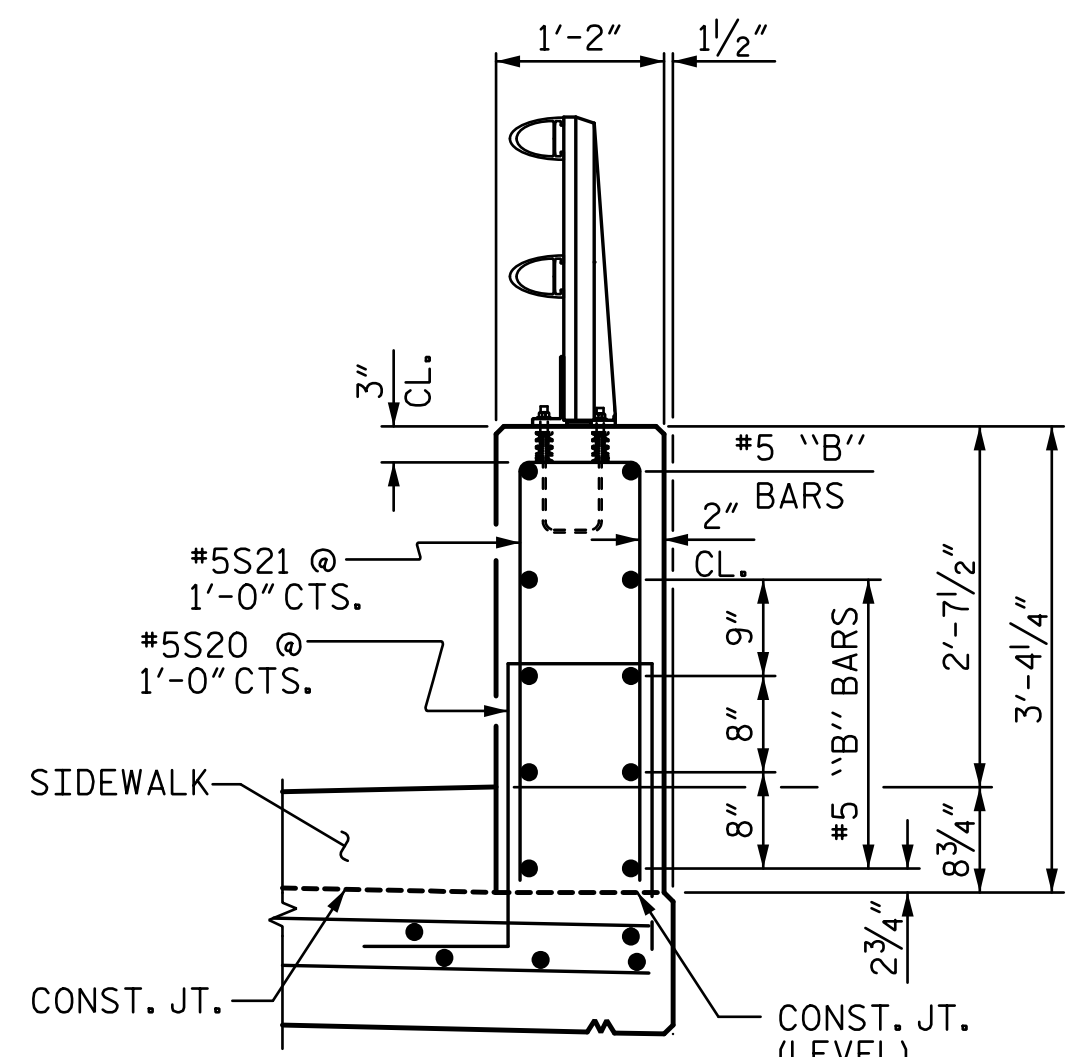
ELEVATION

PARAPET AND END BLOCK FOR TWO BAR RAIL

(LEFT SIDE SHOWN, RIGHT SIDE SIMILAR.)

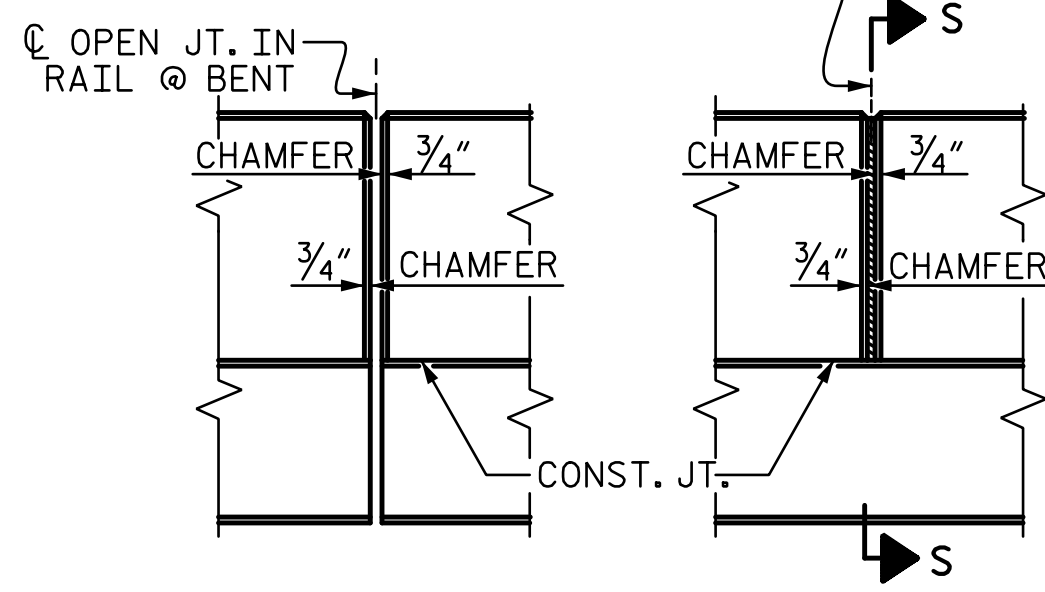


SECTION THRU CONCRETE PARAPET STAGE 1



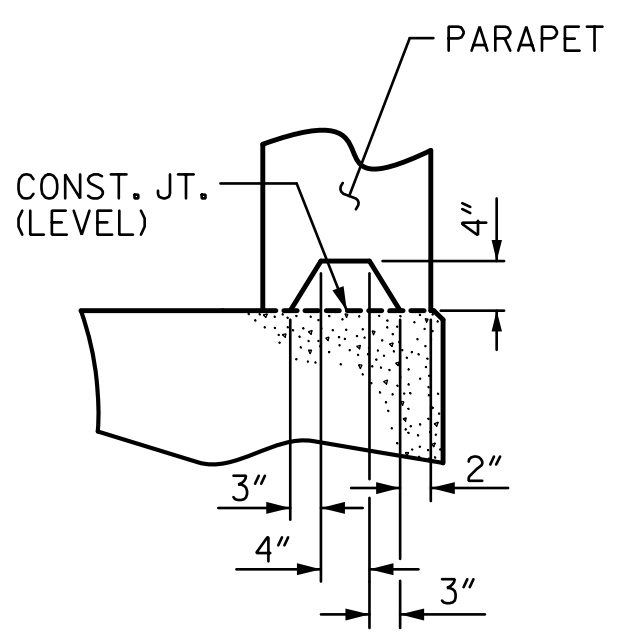
SECTION THRU CONCRETE PARAPET STAGE 3

1/2" EXP. JT. MAT'L HELD IN PLACE WITH GALVANIZED NAILS. (NOTE: OMIT EXP. JT. MAT'L. WHEN SLIP FORM IS USED)



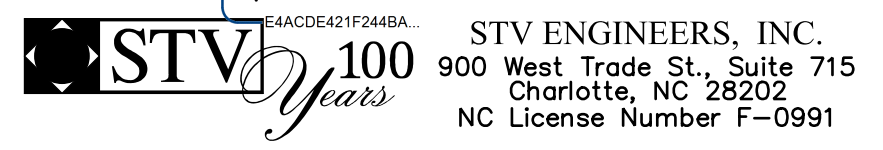
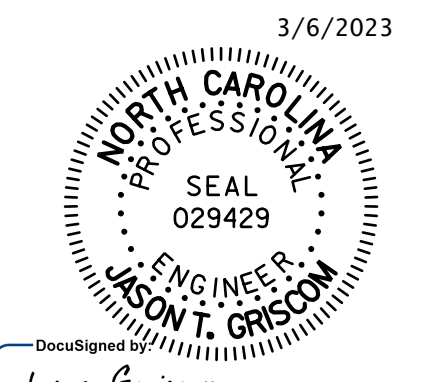
ELEVATION AT EXPANSION JOINTS

(SIDEWALK NOT SHOWN FOR CLARITY.)



SECTION S-S

AT DAM IN OPEN JOINT (THIS IS TO BE USED ONLY WHEN SLIP FORM IS USED)



DOCUMENT NOT CONSIDERED FINAL UNLESS ALL SIGNATURES COMPLETED

PROJECT NO. B-5808
CABARRUS COUNTY
 STATION: 20+64.00 -L-

SHEET 1 OF 2

STATE OF NORTH CAROLINA
 DEPARTMENT OF TRANSPORTATION
 RALEIGH

1'-2" X 3'-4 1/4" CONCRETE PARAPET

REVISIONS				SHEET NO.	
NO.	BY:	DATE:	NO.	BY:	DATE:
1			3		
2			4		

TOTAL SHEETS 65

ASSEMBLED BY :	SGH	DATE :	11-22
CHECKED BY :	MLO	DATE :	11-22
DESIGN ENGINEER OF RECORD :	J. GRISCOM	DATE :	3-23