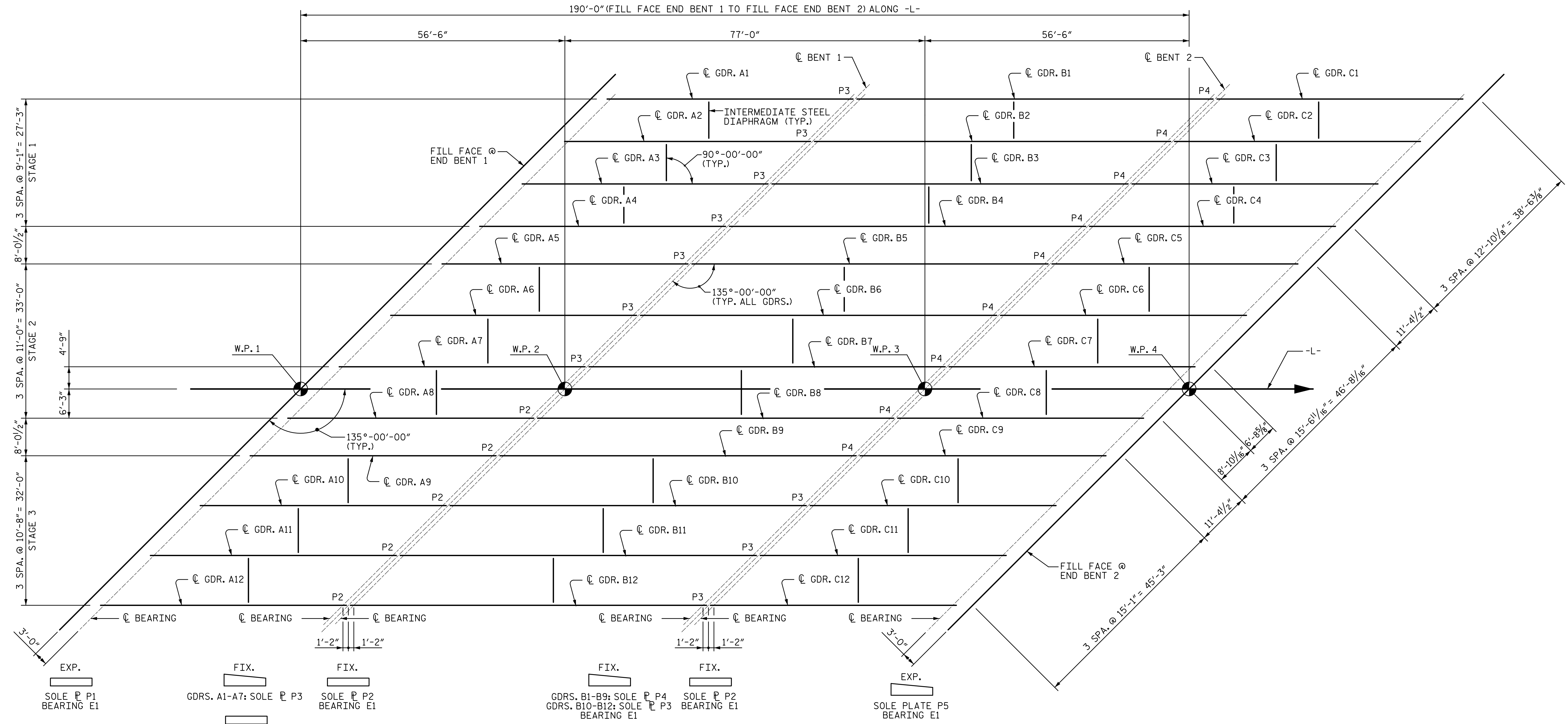
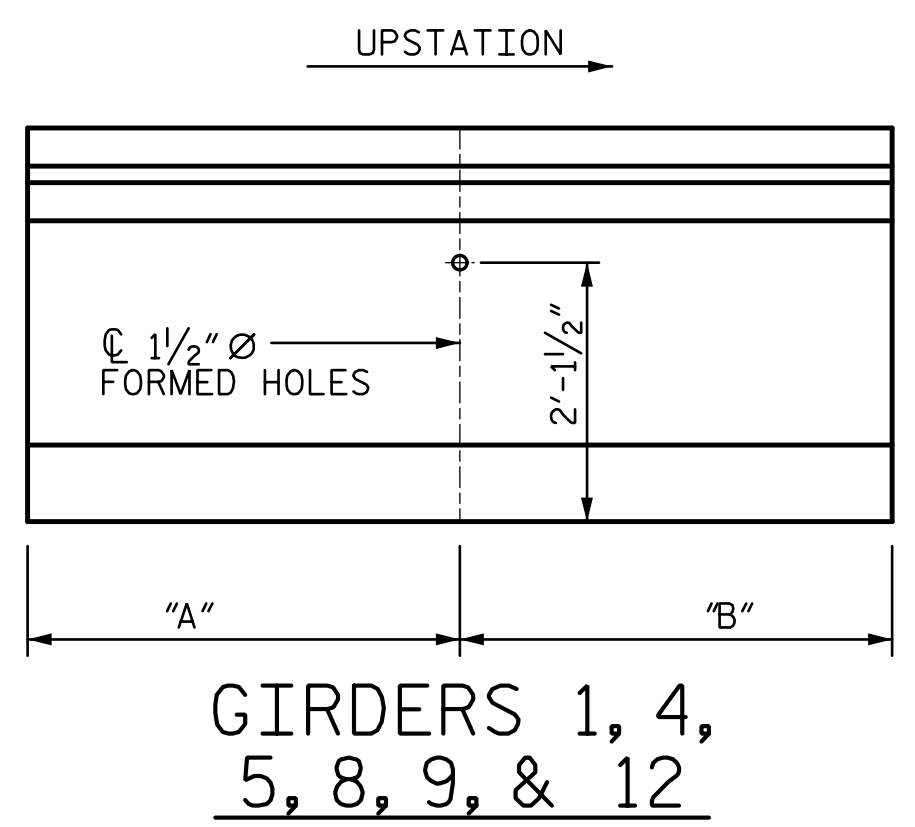


R:\Structures\04\_Justation\05 RFC Bridge Plans\401\_043\_B5808\_SMU\_FPL\_022\_120057.dgn 3/6/2023 10:36:34 AM HensleSC

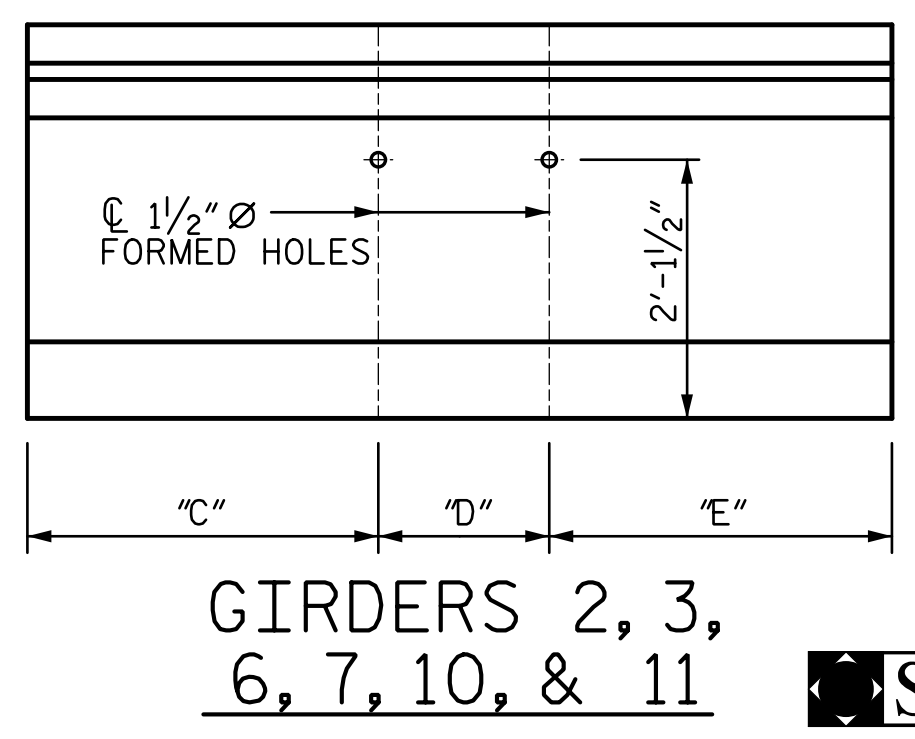


### FRAMING PLAN



GDR.	SPANS "A" & "C"				
	"A"	"B"	"C"	"D"	"E"
1	21'-9 1/16"	30'-10 1/16"	-	-	-
2	-	-	21'-9 1/16"	9'-1"	21'-9 1/16"
3	-	-	21'-9 1/16"	9'-1"	21'-9 1/16"
4	30'-10 1/16"	21'-9 1/16"	-	-	-
5	20'-9 9/16"	31'-9 9/16"	-	-	-
6	-	-	20'-9 9/16"	11'-0"	20'-9 9/16"
7	-	-	20'-9 9/16"	11'-0"	20'-9 9/16"
8	31'-9 9/16"	20'-9 9/16"	-	-	-
9	20'-11 9/16"	31'-7 9/16"	-	-	-
10	-	-	20'-11 9/16"	10'-8"	20'-11 9/16"
11	-	-	20'-11 9/16"	10'-8"	20'-11 9/16"
12	31'-7 9/16"	20'-11 9/16"	-	-	-

GDR.	SPAN "B"				
	"A"	"B"	"C"	"D"	"E"
1	33'-6 1/2"	42'-7 1/2"	-	-	-
2	-	-	33'-6 1/2"	9'-1"	33'-6 1/2"
3	-	-	33'-6 1/2"	9'-1"	33'-6 1/2"
4	42'-7 1/2"	33'-6 1/2"	-	-	-
5	32'-7"	43'-7"	-	-	-
6	-	-	32'-7"	11'-0"	32'-7"
7	-	-	32'-7"	11'-0"	32'-7"
8	43'-7"	32'-7"	-	-	-
9	32'-9"	43'-5"	-	-	-
10	-	-	32'-9"	10'-8"	32'-9"
11	-	-	32'-9"	10'-8"	32'-9"
12	43'-5"	32'-9"	-	-	-



ASSEMBLED BY: SGH DATE: 7-21  
 CHECKED BY: MLO DATE: 6-22  
 DESIGN ENGINEER OF RECORD: J. GRISCOM DATE: 3-23

3/6/2023

STV ENGINEERS, INC.  
 900 West Trade St., Suite 715  
 Charlotte, NC 28202  
 NC License Number F-0991

SEAL 029429  
 ENGINEER  
 JASON T. GRISCOM

DOCUMENT NOT CONSIDERED FINAL UNLESS ALL SIGNATURES COMPLETED

PROJECT NO. **B-5808**  
**CABARRUS** COUNTY  
 STATION: **20+64.00 -L-**

REVISIONS					SHEET NO.
NO.	BY:	DATE:	NO.	BY:	DATE:
1			3		
2			4		

**FRAMING PLAN**

S-22  
 TOTAL SHEETS 65