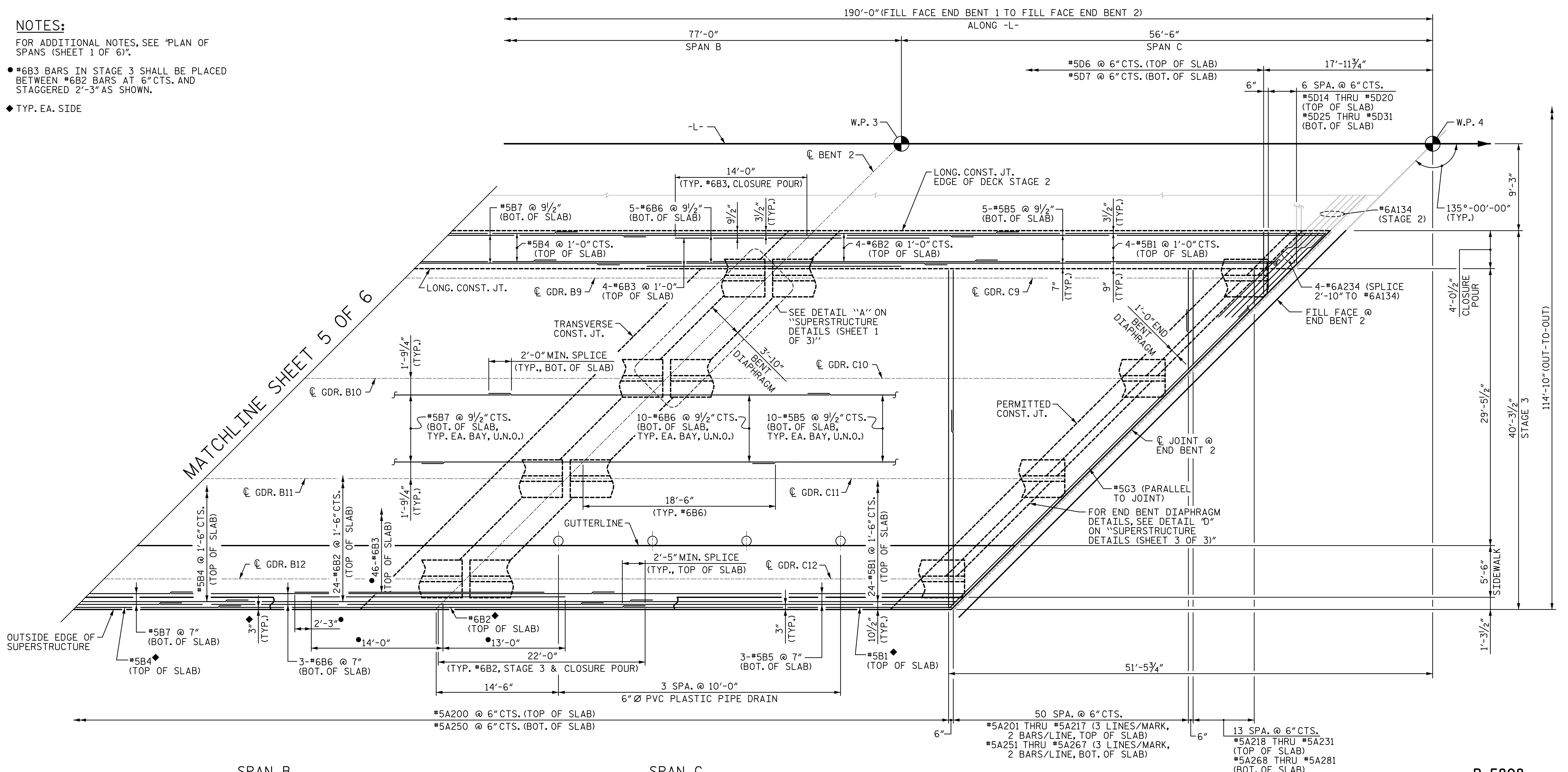


NOTES:

FOR ADDITIONAL NOTES, SEE 'PLAN OF SPANS (SHEET 1 OF 6)'

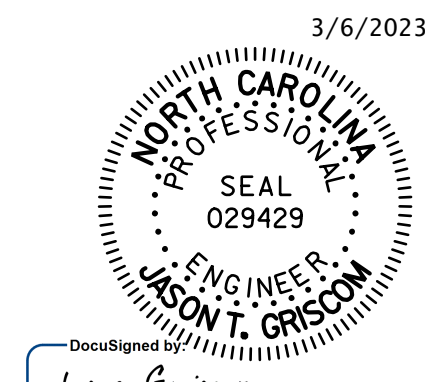
- #6B3 BARS IN STAGE 3 SHALL BE PLACED BETWEEN #6B2 BARS AT 6" CTS. AND STAGGERED 2'-3" AS SHOWN.
- ◆ TYP. EA. SIDE

R:\Structures\04_Justation\05 RFC Bridge Plans\401_039_B5808_SMU_S6_020_120057.dgn 3/6/2023 10:35:49 AM HensleSG



PLAN OF SPANS
 STAGE 3
 (TEMPORARY BARRIER NOT SHOWN FOR CLARITY.)
 (U.N.O. - UNLESS NOTED OTHERWISE)

PROJECT NO. **B-5808**
 CABARRUS COUNTY
 STATION: **20+64.00 -L-**
 SHEET 6 OF 6



STV ENGINEERS, INC.
 900 West Trade St., Suite 715
 Charlotte, NC 28202
 NC License Number F-0991

DOCUMENT NOT CONSIDERED
 FINAL UNLESS ALL
 SIGNATURES COMPLETED

STATE OF NORTH CAROLINA DEPARTMENT OF TRANSPORTATION RALEIGH					
PLAN OF SPANS					
REVISIONS					SHEET NO.
NO.	BY:	DATE:	NO.	BY:	DATE:
1			3		
2			4		
					S-20
					TOTAL SHEETS 65

ASSEMBLED BY : **SGH** DATE : **8-22**
 CHECKED BY : **MLO** DATE : **8-22**
 DESIGN ENGINEER OF RECORD : **J. GRISCOM** DATE : **3-23**