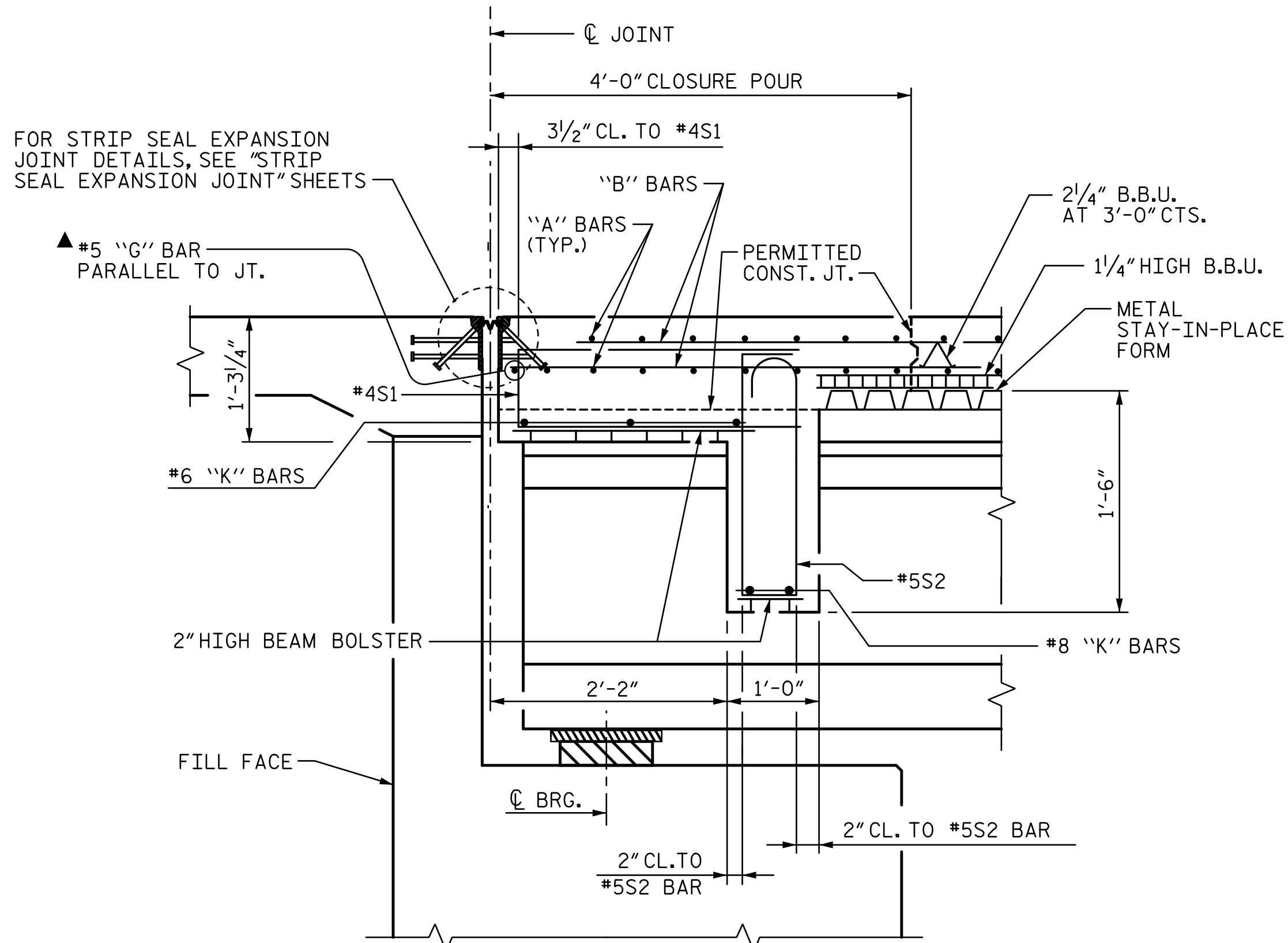


R:\Structures\04_Station\05 RFC Bridge Plans\03_SMU_SD2_013_20057.dgn

3/6/2023 10:33:08 AM

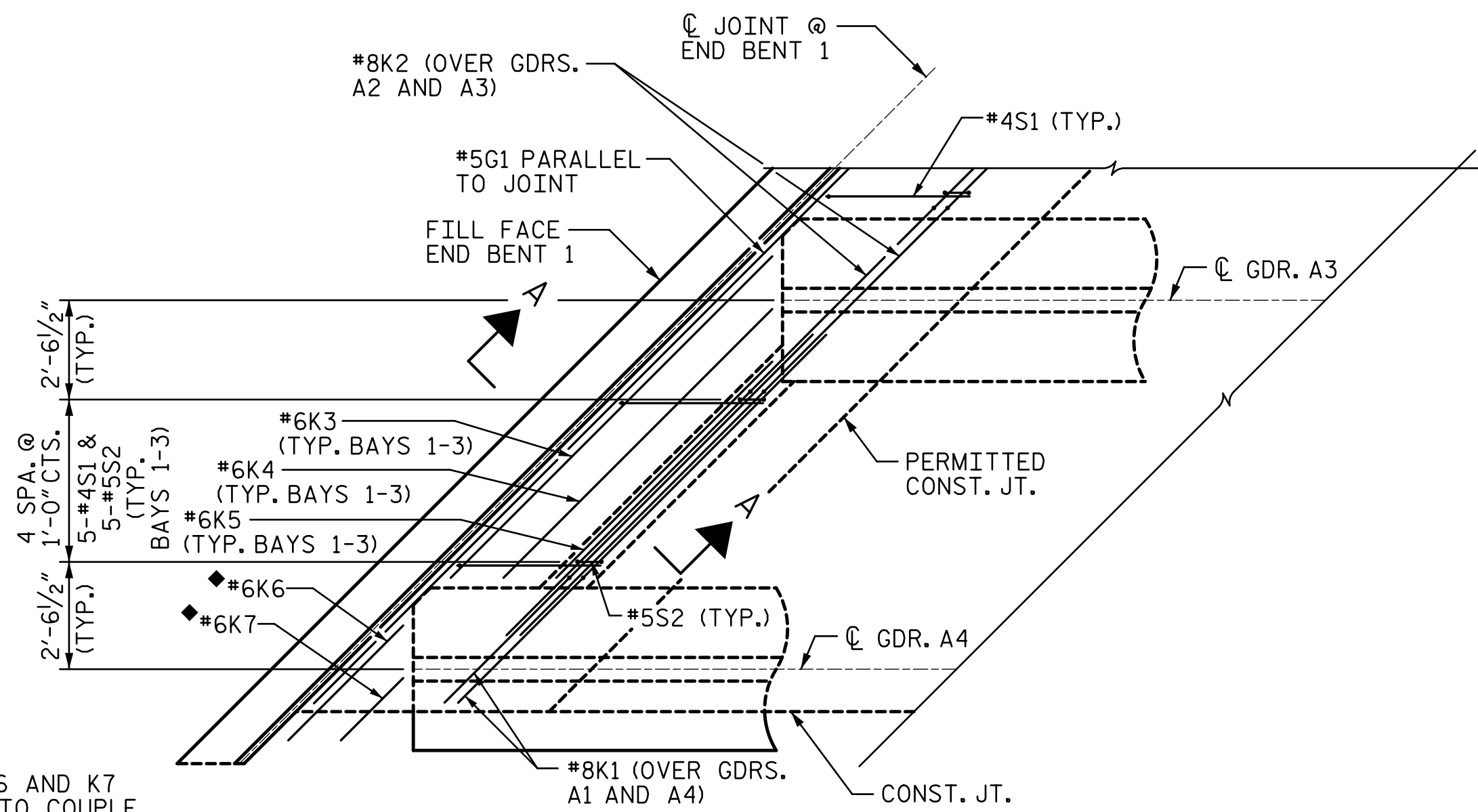
3/6/2023

HensleSC



SECTION A-A

END BENT 1 SHOWN, END BENT 2 SIMILAR.
▲ #5 "G" BARS MAY BE SHIFTED SLIGHTLY, AS NECESSARY, TO CLEAR REINFORCING STEEL AND STIRRUPS.



DETAIL "B"

♦ PROJECT K6 AND K7 BARS 1'-0" TO COUPLE TO STAGE 2 BARS, END BENT 1 ONLY

END DIAPHRAGM AT END BENT 1, STAGE 1 SHOWN.
END DIAPHRAGM AT END BENT 2 STAGE 1 SIMILAR, UNLESS NOTED OTHERWISE.

ASSEMBLED BY :	SGH	DATE :	11-22
CHECKED BY :	MLO	DATE :	11-22
DESIGN ENGINEER OF RECORD :	J. GRISCOM	DATE :	3-23

3/6/2023

DocuSigned by:
Jason Griscom
EAACDE421F244BA

STV ENGINEERS, INC.
100 900 West Trade St., Suite 715
Charlotte, NC 28202
NC License Number F-0991

DOCUMENT NOT CONSIDERED FINAL UNLESS ALL SIGNATURES COMPLETED

PROJECT NO. B-5808
CABARRUS COUNTY
STATION: 20+64.00 -L-
SHEET 2 OF 3

STATE OF NORTH CAROLINA
DEPARTMENT OF TRANSPORTATION
RALEIGH

SUPERSTRUCTURE DETAILS

REVISIONS						SHEET NO.
NO.	BY:	DATE:	NO.	BY:	DATE:	S-13
1			3			TOTAL SHEETS
2			4			65