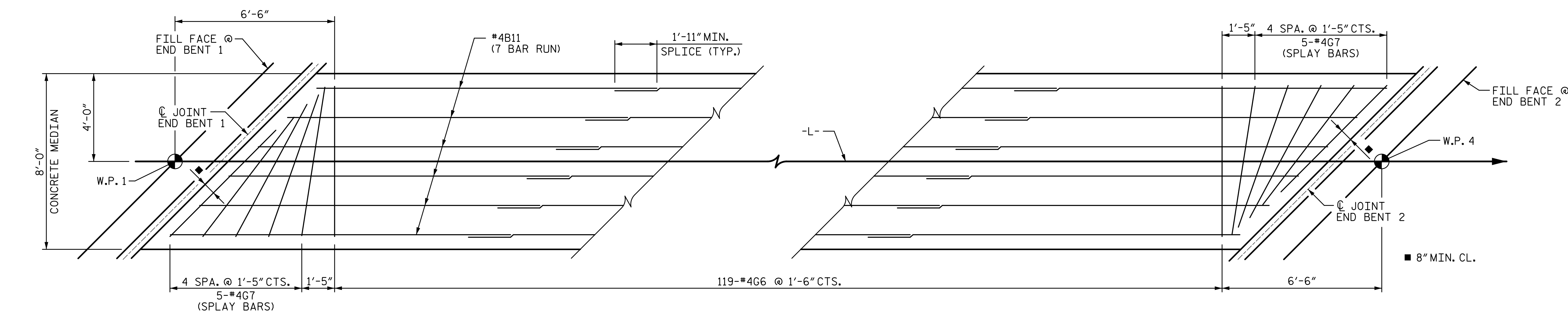
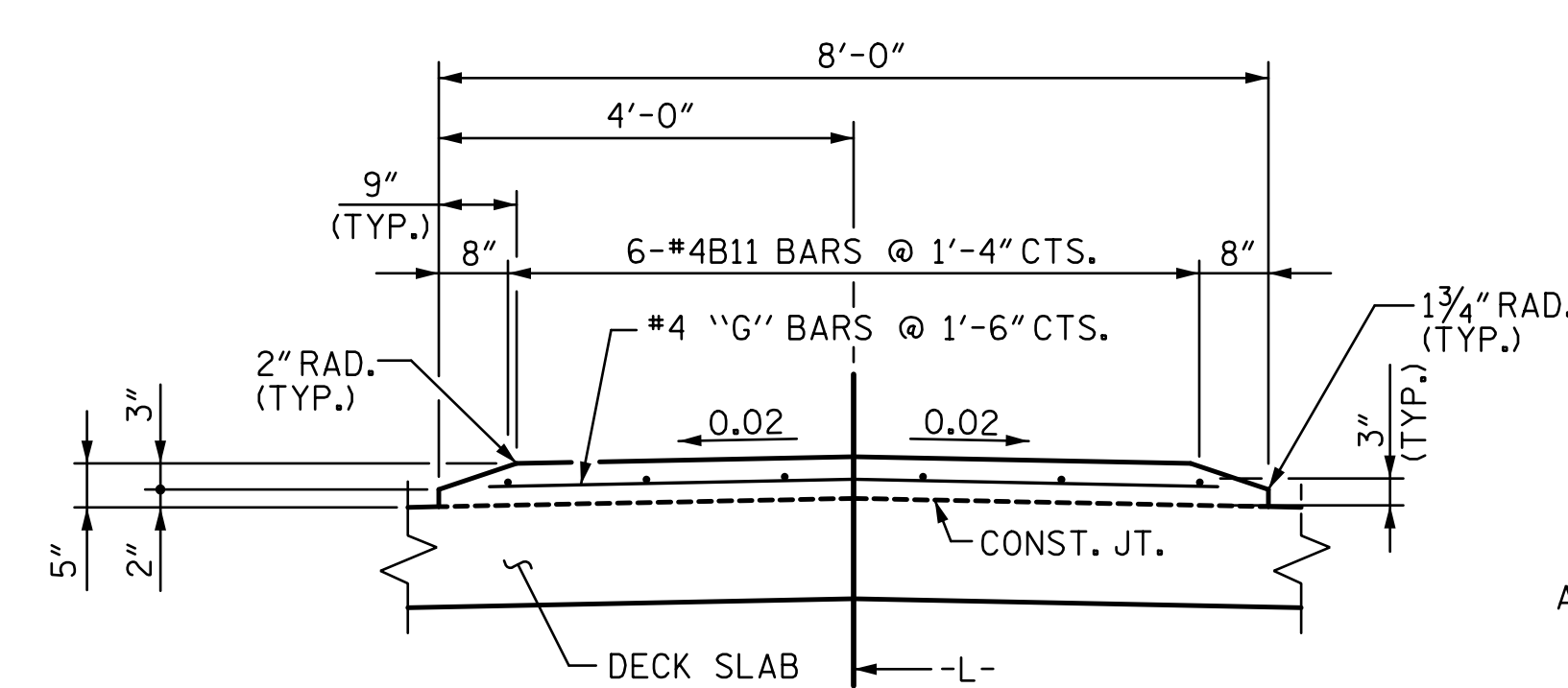


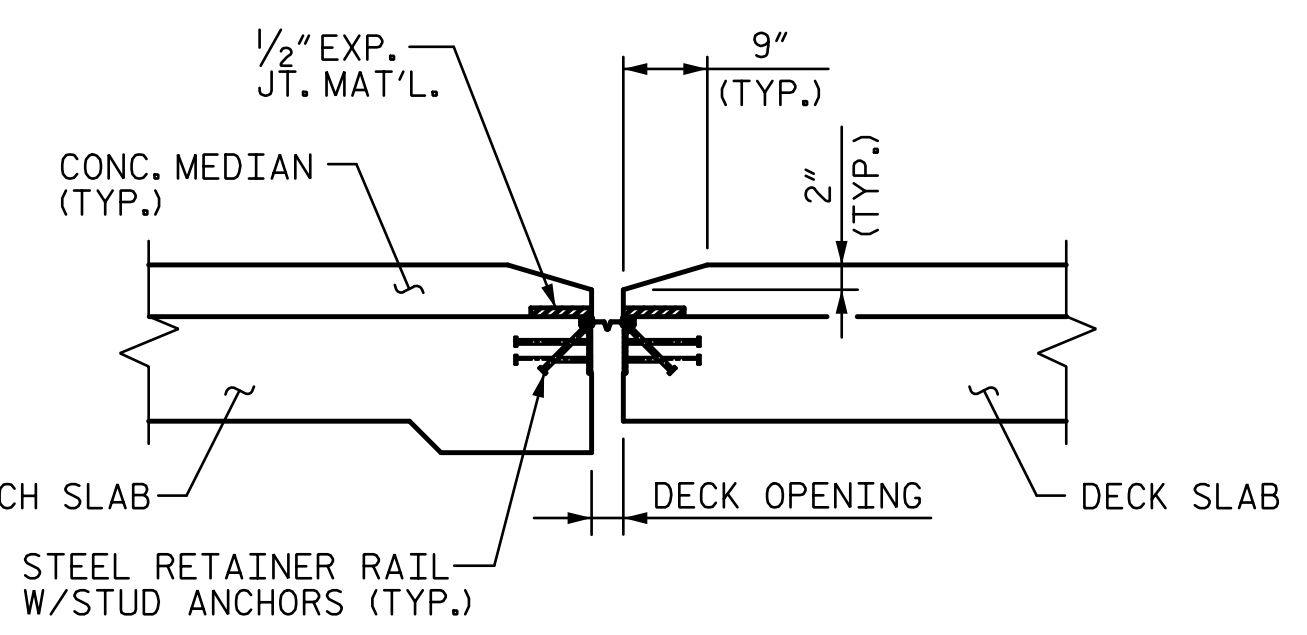
TYPICAL SECTION  
STAGE 4



PLAN



REINFORCING STEEL DETAILS



DETAILS AT EXPANSION JOINT



CONCRETE MEDIAN DETAILS

NOTES:

FOR ADDITIONAL NOTES, SEE "TYPICAL SECTION STAGE 1 (SHEET 1 OF 4)".

CONCRETE MEDIAN AND SIDEWALK SHALL NOT BE CAST UNTIL ALL SLAB CONCRETE HAS BEEN CAST AND ATTAINED A MINIMUM COMPRESSIVE STRENGTH OF 3,000 PSI.

ALL REINFORCING STEEL IN CONCRETE MEDIAN SHALL BE EPOXY COATED.

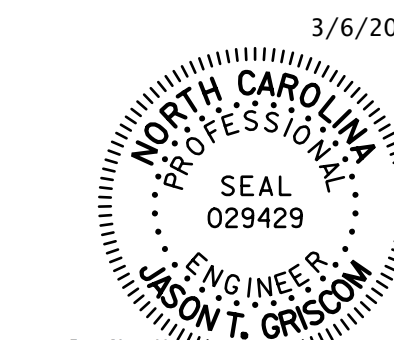
FOR SIDEWALK DETAILS, SEE "SIDEWALK DETAILS" SHEET.

PROJECT NO. B-5808  
CABARRUS COUNTY  
 STATION: 20+64.00 -L-

SHEET 4 OF 4

STATE OF NORTH CAROLINA  
 DEPARTMENT OF TRANSPORTATION  
 RALEIGH

TYPICAL SECTION  
STAGE 4



STV ENGINEERS, INC.  
 100 900 West Trade St., Suite 715  
 Charlotte, NC 28202  
 NC License Number F-0991

DOCUMENT NOT CONSIDERED  
 FINAL UNLESS ALL  
 SIGNATURES COMPLETED

REVISIONS				SHEET NO.	
NO.	BY:	DATE:	NO.	BY:	DATE:
1			3		
2			4		

S-11  
TOTAL SHEETS 65

R:\Structures\04\_Station\05 RFC Bridge Plans\401\_02LB5808\_SMU\_TS4\_OIL\200517.dgn  
 3/6/2023 10:32:23 AM HensleSC

ASSEMBLED BY : SGH DATE : 7-22  
 CHECKED BY : MLO DATE : 7-22  
 DESIGN ENGINEER OF RECORD : J. GRISCOM DATE : 3-23