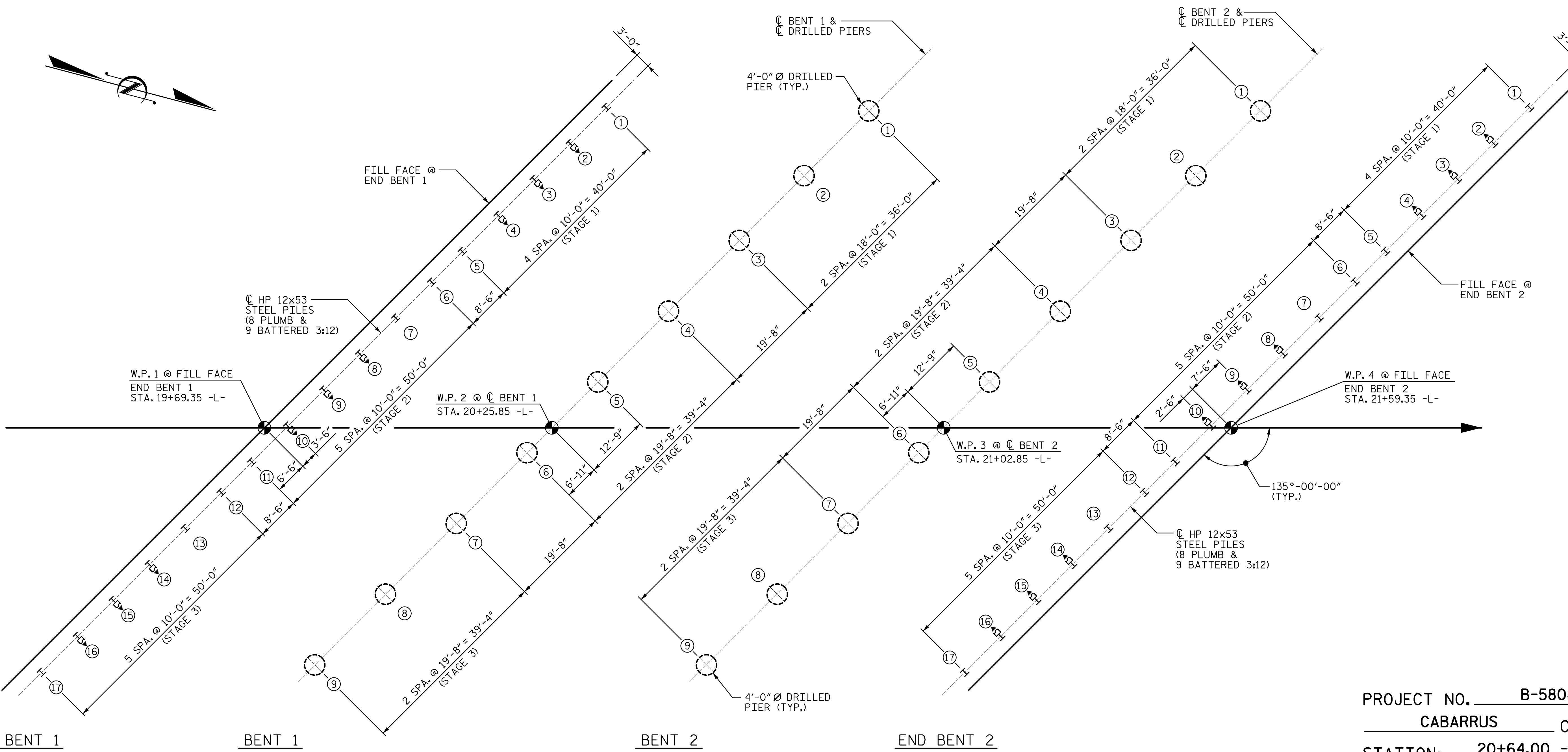


R:\Structures\04_Justation\05 RFC Bridge Plans\401_003_B5808_SMU_FL_002_120057.dgn 10:28:10 AM 3/6/2023 HensleSC



FOUNDATION LAYOUT

⊕ - PILE/DRILLED PIER NO.
 ▲ - INDICATES BATTERED PILE
 ALL PILES SHALL BE HP 12x53 STEEL PILES.
 DIMENSIONS TO PILES ARE TO Ⓞ PILE AT BOTTOM OF CAP.
 DIMENSIONS TO DRILLED PIERS ARE TO Ⓞ DRILLED PIER.

NOTES:
 FOR FOUNDATION NOTES AND INFORMATION SEE SHEET "PILE AND DRILLED PIER FOUNDATION TABLES AND NOTES".

ASSEMBLED BY :	SGH	DATE :	5-22
CHECKED BY :	MLO	DATE :	8-22
DESIGN ENGINEER OF RECORD :	J. GRISCOM	DATE :	3-23

3/6/2023

PROFESSIONAL SEAL
 SEAL 029429
 ENGINEER
 JASON T. GRISCOM

DocuSigned by:
 Jason Griscorn

STV 100 YEARS
 STV ENGINEERS, INC.
 900 West Trade St., Suite 715
 Charlotte, NC 28202
 NC License Number F-0991

DOCUMENT NOT CONSIDERED
 FINAL UNLESS ALL
 SIGNATURES COMPLETED

PROJECT NO. B-5808
CABARRUS COUNTY
 STATION: 20+64.00 -L-

STATE OF NORTH CAROLINA DEPARTMENT OF TRANSPORTATION RALEIGH					
FOUNDATION LAYOUT					
REVISIONS					SHEET NO.
NO.	BY:	DATE:	NO.	BY:	DATE:
1			3		
2			4		
					TOTAL SHEETS 65