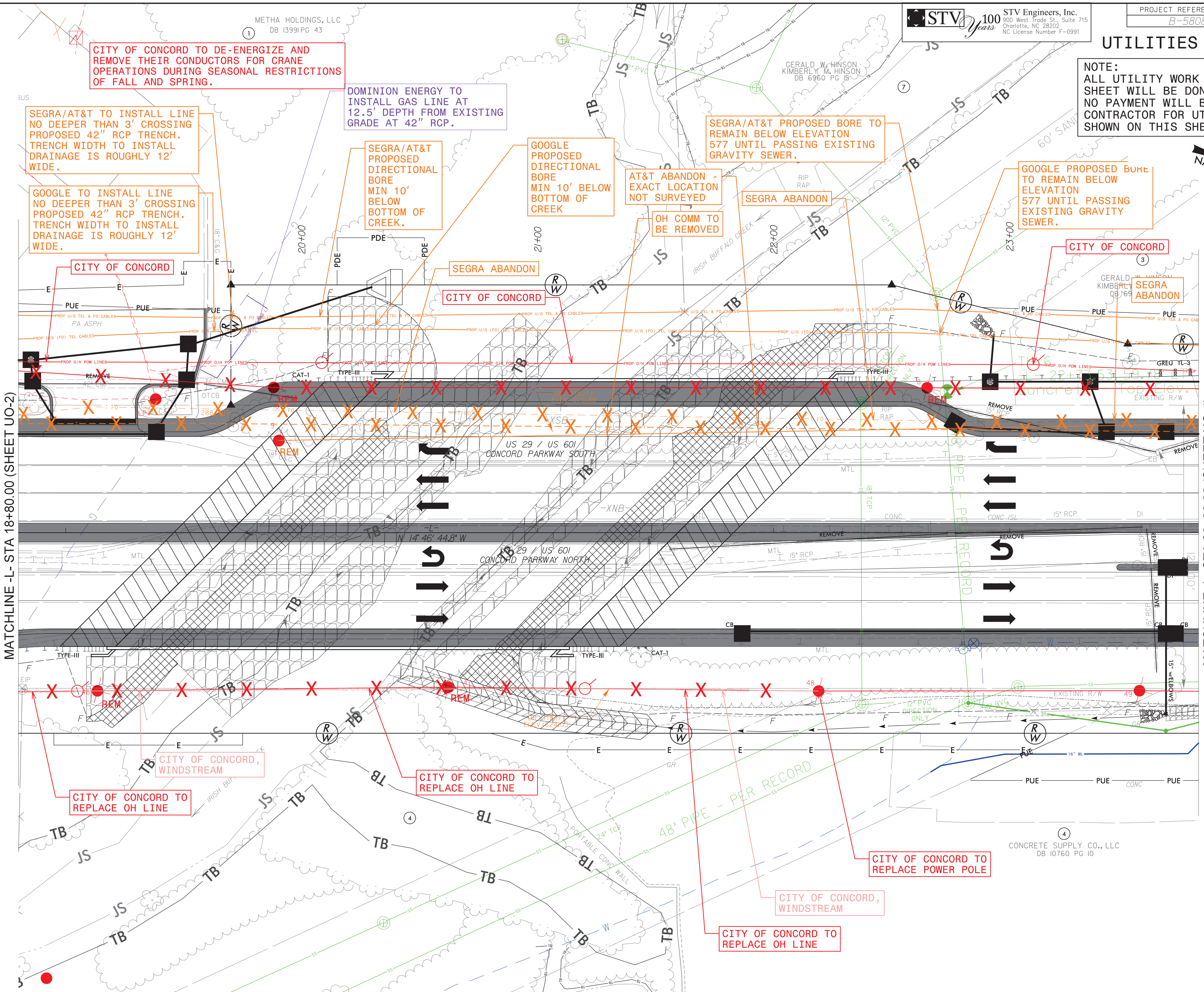


UTILITIES BY OTHERS

NOTE:
 ALL UTILITY WORK SHOWN ON THIS SHEET WILL BE DONE BY OTHERS. NO PAYMENT WILL BE MADE TO THE CONTRACTOR FOR UTILITY WORK SHOWN ON THIS SHEET.



MATCHLINE -L- STA 18+80.00 (SHEET UO-2)

MATCHLINE -L- STA 23+80.00 (SHEET UO-4)

CITY OF CONCORD TO DE-ENERGIZE AND REMOVE THEIR CONDUCTORS FOR CRANE OPERATIONS DURING SEASONAL RESTRICTIONS OF FALL AND SPRING.

DOMINION ENERGY TO INSTALL GAS LINE AT 12.5' DEPTH FROM EXISTING GRADE AT 42" RCP.

SEGRA/AT&T TO INSTALL LINE NO DEEPER THAN 3' CROSSING PROPOSED 42" RCP TRENCH. TRENCH WIDTH TO INSTALL DRAINAGE IS ROUGHLY 12' WIDE.

GOOGLE TO INSTALL LINE NO DEEPER THAN 3' CROSSING PROPOSED 42" RCP TRENCH. TRENCH WIDTH TO INSTALL DRAINAGE IS ROUGHLY 12' WIDE.

SEGRA/AT&T PROPOSED DIRECTIONAL BORE MIN 10' BELOW BOTTOM OF CREEK.

GOOGLE PROPOSED DIRECTIONAL BORE MIN 10' BELOW BOTTOM OF CREEK

SEGRA/AT&T PROPOSED BORE TO REMAIN BELOW ELEVATION 577 UNTIL PASSING EXISTING GRAVITY SEWER.

GOOGLE PROPOSED BORE TO REMAIN BELOW ELEVATION 577 UNTIL PASSING EXISTING GRAVITY SEWER.

AT&T ABANDON - EXACT LOCATION NOT SURVEYED

OH COMM TO BE REMOVED

CITY OF CONCORD

SEGRA ABANDON

CITY OF CONCORD

CITY OF CONCORD

CITY OF CONCORD, WINDSTREAM

CITY OF CONCORD TO REPLACE OH LINE

CITY OF CONCORD TO REPLACE OH LINE

CITY OF CONCORD TO REPLACE POWER POLE

CITY OF CONCORD, WINDSTREAM

CITY OF CONCORD TO REPLACE OH LINE

CONCRETE SUPPLY CO., LLC
 DB 10760 PG 10