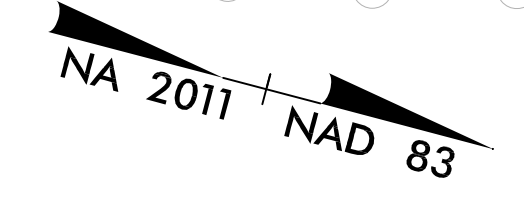


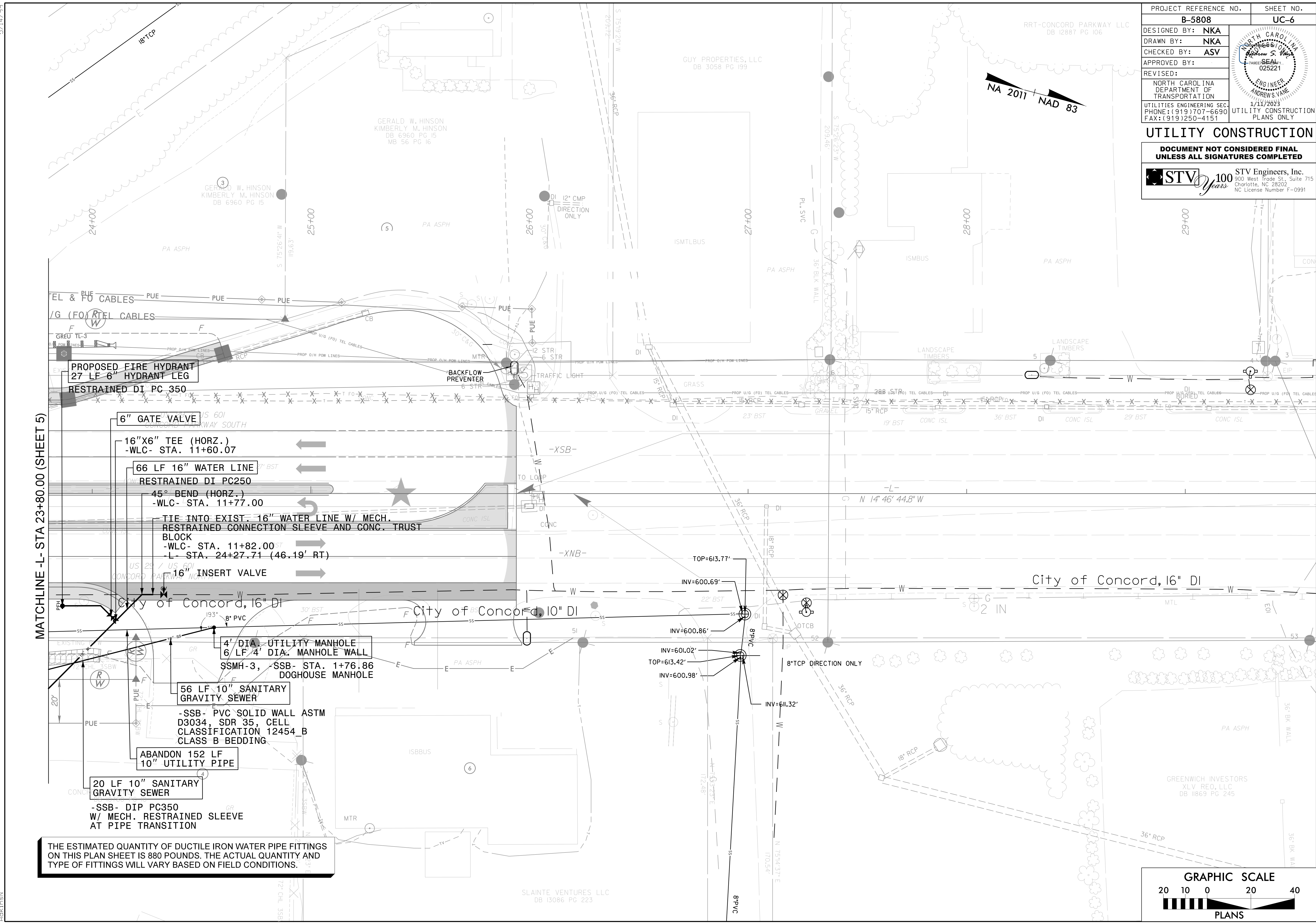
PROJECT REFERENCE NO.	SHEET NO.
B-5808	UC-6
DESIGNED BY: NKA	
DRAWN BY: NKA	
CHECKED BY: ASV	
APPROVED BY:	
REVISED:	1/11/2023
NORTH CAROLINA DEPARTMENT OF TRANSPORTATION	UTILITY CONSTRUCTION PLANS ONLY
UTILITIES ENGINEERING SEC. PHONE: (919) 707-6690 FAX: (919) 250-4151	



UTILITY CONSTRUCTION

**DOCUMENT NOT CONSIDERED FINAL
UNLESS ALL SIGNATURES COMPLETED**

STV Engineers, Inc.
300 West Trade St., Suite 715
Charlotte, NC 28202
NC License Number F-0991



MATCHLINE -L- STA 23+80.00 (SHEET 5)

PROPOSED FIRE HYDRANT
27 LF 6" HYDRANT LEG
RESTRAINED DI PC 350

6" GATE VALVE

16"X6" TEE (HORZ.)
-WLC- STA. 11+60.07

66 LF 16" WATER LINE
RESTRAINED DI PC250

45° BEND (HORZ.)
-WLC- STA. 11+77.00

TIE INTO EXIST. 16" WATER LINE W/ MECH.
RESTRAINED CONNECTION SLEEVE AND CONC. TRUST
BLOCK
-WLC- STA. 11+82.00
-L- STA. 24+27.71 (46.19' RT)

16" INSERT VALVE

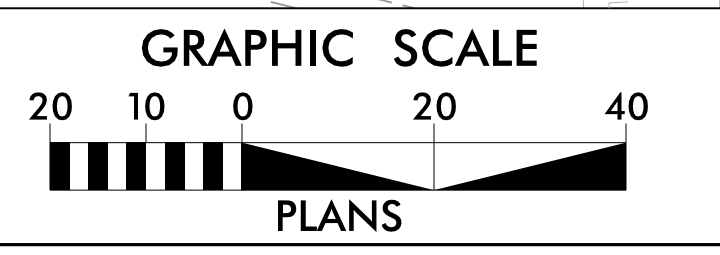
4" DIA. UTILITY MANHOLE
6 LF 4' DIA. MANHOLE WALL
SSMH-3, SSB- STA. 1+76.86
DOGHOUSE MANHOLE

56 LF 10" SANITARY
GRAVITY SEWER
-SSB- PVC SOLID WALL ASTM
D3034, SDR 35, CELL
CLASSIFICATION 12454_B
CLASS B BEDDING

ABANDON 152 LF
10" UTILITY PIPE

20 LF 10" SANITARY
GRAVITY SEWER
-SSB- DIP PC350
W/ MECH. RESTRAINED SLEEVE
AT PIPE TRANSITION

**THE ESTIMATED QUANTITY OF DUCTILE IRON WATER PIPE FITTINGS
ON THIS PLAN SHEET IS 880 POUNDS. THE ACTUAL QUANTITY AND
TYPE OF FITTINGS WILL VARY BASED ON FIELD CONDITIONS.**



1/11/2023
F:\Utilities\Engineering\UC\Proj\Sheet\B-5808B_uc_06_psh.dgn
ackins