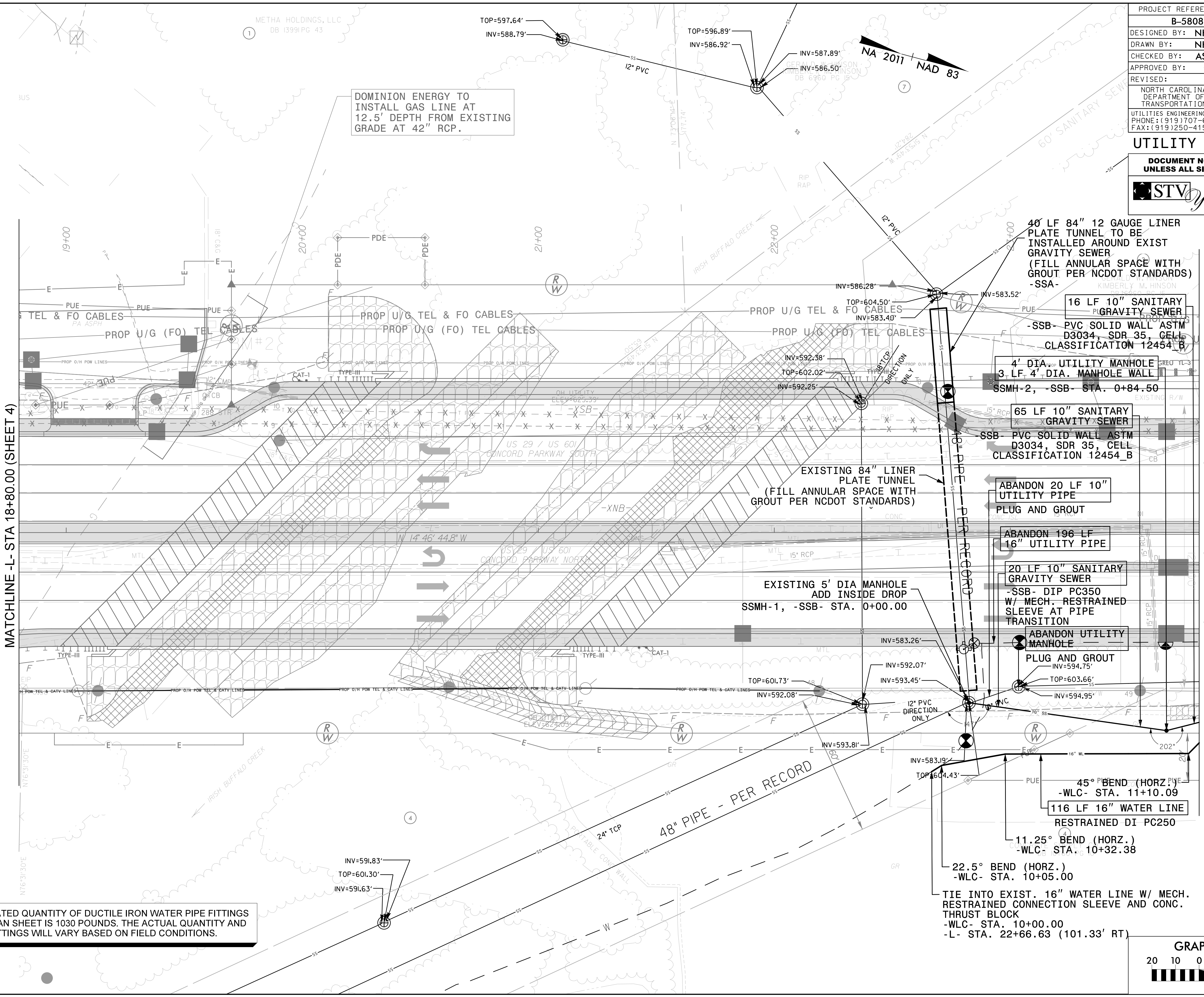


5/14/23

|  |           |
|--|-----------|
| PROJECT REFERENCE NO.  | SHEET NO. |
| B-5808   | UC-5      |
| DESIGNED BY: NKA   |           |
| DRAWN BY: NKA  |           |
| CHECKED BY: ASV  |           |
| APPROVED BY:   |           |
| REVISED:   |           |
| NORTH CAROLINA DEPARTMENT OF TRANSPORTATION<br>UTILITIES ENGINEERING SECTION<br>PHONE: (919) 707-6690<br>FAX: (919) 250-4151 |           |
| 1/11/2023<br>UTILITY CONSTRUCTION PLANS ONLY   |           |

### UTILITY CONSTRUCTION

**DOCUMENT NOT CONSIDERED FINAL UNLESS ALL SIGNATURES COMPLETED**

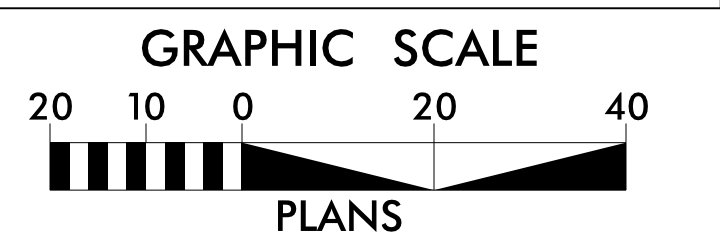


MATCHLINE -L- STA 18+80.00 (SHEET 4)

MATCHLINE -L- STA 23+80.00 (SHEET 6)

DOMINION ENERGY TO INSTALL GAS LINE AT 12.5' DEPTH FROM EXISTING GRADE AT 42" RCP.

THE ESTIMATED QUANTITY OF DUCTILE IRON WATER PIPE FITTINGS ON THIS PLAN SHEET IS 1030 POUNDS. THE ACTUAL QUANTITY AND TYPE OF FITTINGS WILL VARY BASED ON FIELD CONDITIONS.



1/11/2023 F:\Utilities\Engineering\UC\Proj\Sheet\B-5808B\_uc05\_psh.dgn