

8/17/99

**STV** 100 Years  
 STV Engineers, Inc.  
 900 West Trade St., Suite 715  
 Charlotte, NC 28202  
 NC License Number F-0991

PROJECT REFERENCE NO. <i>B-5808</i>	SHEET NO. <i>EC-9/CONST.6</i>
--	----------------------------------

RW SHEET NO.	HYDRAULICS ENGINEER
ROADWAY DESIGN ENGINEER	

**DOCUMENT NOT CONSIDERED FINAL  
UNLESS ALL SIGNATURES COMPLETED**

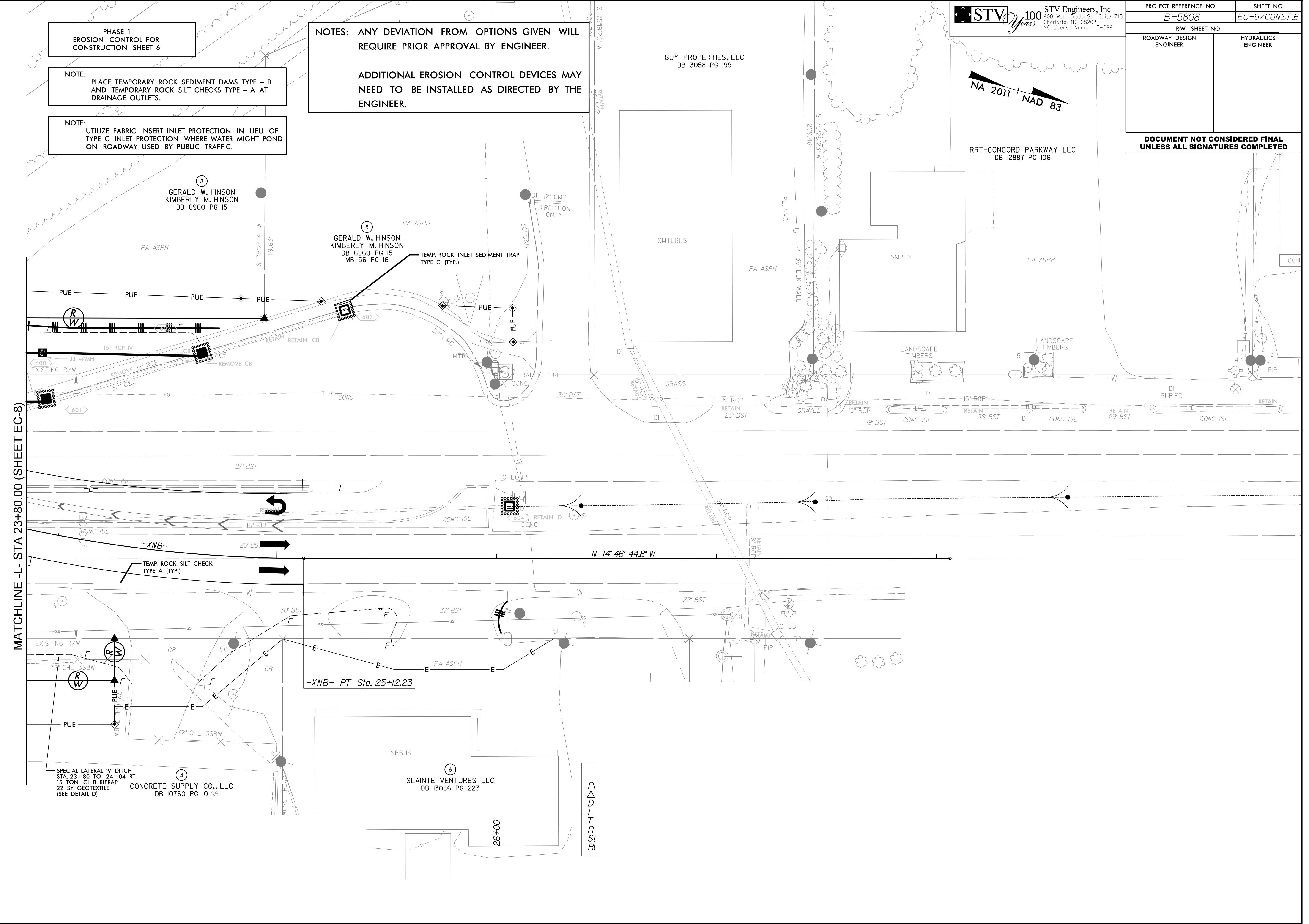
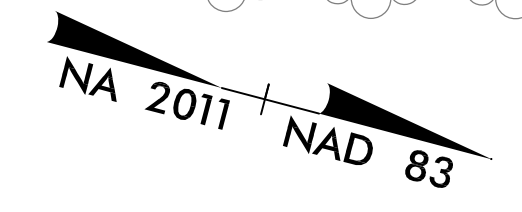
**PHASE 1  
EROSION CONTROL FOR  
CONSTRUCTION SHEET 6**

**NOTE:**  
PLACE TEMPORARY ROCK SEDIMENT DAMS TYPE - B  
AND TEMPORARY ROCK SILT CHECKS TYPE - A AT  
DRAINAGE OUTLETS.

**NOTE:**  
UTILIZE FABRIC INSERT INLET PROTECTION IN LIEU OF  
TYPE C INLET PROTECTION WHERE WATER MIGHT POND  
ON ROADWAY USED BY PUBLIC TRAFFIC.

**NOTES: ANY DEVIATION FROM OPTIONS GIVEN WILL  
REQUIRE PRIOR APPROVAL BY ENGINEER.**

**ADDITIONAL EROSION CONTROL DEVICES MAY  
NEED TO BE INSTALLED AS DIRECTED BY THE  
ENGINEER.**



MATCHLINE -L- STA 23+80.00 (SHEET EC-8)

**4**  
SPECIAL LATERAL 'Y' DITCH  
STA. 23+80 TO 24+04 RT  
15 TON CL-B RIPRAP  
22 SY GEOTEXTILE  
(SEE DETAIL D)

**CONCRETE SUPPLY CO., LLC**  
DB 10760 PG 10 GR

**6**  
**SLAINTE VENTURES LLC**  
DB 13086 PG 223

P  
Δ  
D  
L  
T  
R  
S  
I

2/14/2023 mental\Design\EC\_Sheets\B5808\_EC\_PSH09.dgn  
mobile by