

8/17/99



PROJECT REFERENCE NO. B-5808		SHEET NO. EC-8/CONST.5	
RW SHEET NO. ROADWAY DESIGN ENGINEER		HYDRAULICS ENGINEER	
DOCUMENT NOT CONSIDERED FINAL UNLESS ALL SIGNATURES COMPLETED			

**PHASE 1
EROSION CONTROL FOR
CONSTRUCTION SHEET 5**

①
METHA HOLDINGS, LLC
DB 13991 PG 43

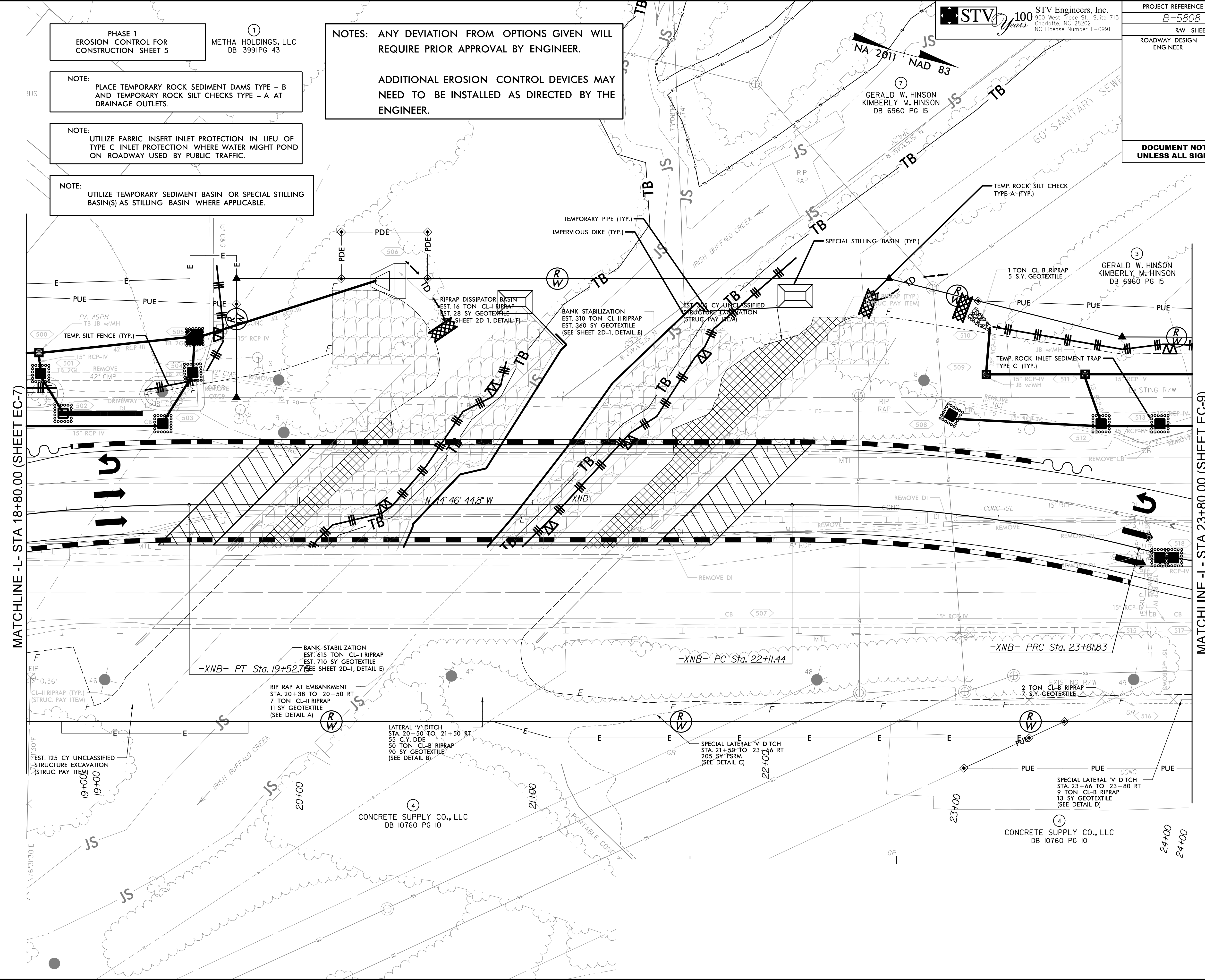
NOTE:
PLACE TEMPORARY ROCK SEDIMENT DAMS TYPE - B
AND TEMPORARY ROCK SILT CHECKS TYPE - A AT
DRAINAGE OUTLETS.

NOTE:
UTILIZE FABRIC INSERT INLET PROTECTION IN LIEU OF
TYPE C INLET PROTECTION WHERE WATER MIGHT POND
ON ROADWAY USED BY PUBLIC TRAFFIC.

NOTE:
UTILIZE TEMPORARY SEDIMENT BASIN OR SPECIAL STILLING
BASIN(S) AS STILLING BASIN WHERE APPLICABLE.

NOTES: ANY DEVIATION FROM OPTIONS GIVEN WILL
REQUIRE PRIOR APPROVAL BY ENGINEER.

ADDITIONAL EROSION CONTROL DEVICES MAY
NEED TO BE INSTALLED AS DIRECTED BY THE
ENGINEER.



MATCHLINE -L- STA 18+80.00 (SHEET EC-7)

MATCHLINE -L- STA 23+80.00 (SHEET EC-9)

BANK STABILIZATION
EST. 615 TON CL-II RIPRAP
EST. 710 SY GEOTEXTILE
(SEE SHEET 2D-1, DETAIL E)
-XNB- PT Sta. 19+52.7

RIP RAP AT EMBANKMENT
STA. 20+38 TO 20+50 RT
7 TON CL-II RIPRAP
11 SY GEOTEXTILE
(SEE DETAIL A)

LATERAL 'V' DITCH
STA. 20+50 TO 21+50 RT
55 CY DDE
50 TON CL-B RIPRAP
90 SY GEOTEXTILE
(SEE DETAIL B)

SPECIAL LATERAL 'V' DITCH
STA. 21+50 TO 23+06 RT
205 SY PSRM
(SEE DETAIL C)

-XNB- PRC Sta. 23+61.83

EXISTING R/W
2 TON CL-B RIPRAP
7 SY GEOTEXTILE

SPECIAL LATERAL 'V' DITCH
STA. 23+66 TO 23+80 RT
9 TON CL-B RIPRAP
13 SY GEOTEXTILE
(SEE DETAIL D)

④
CONCRETE SUPPLY CO., LLC
DB 10760 PG 10

④
CONCRETE SUPPLY CO., LLC
DB 10760 PG 10

2/14/2023 mental\Design\EC_Sheets\B5808_EC_PSH08.dgn