

PROJECT REFERENCE NO. B-5808	SHEET NO. EC-7/CONST.4
RW SHEET NO.	HYDRAULICS ENGINEER
ROADWAY DESIGN ENGINEER	
DOCUMENT NOT CONSIDERED FINAL UNLESS ALL SIGNATURES COMPLETED	

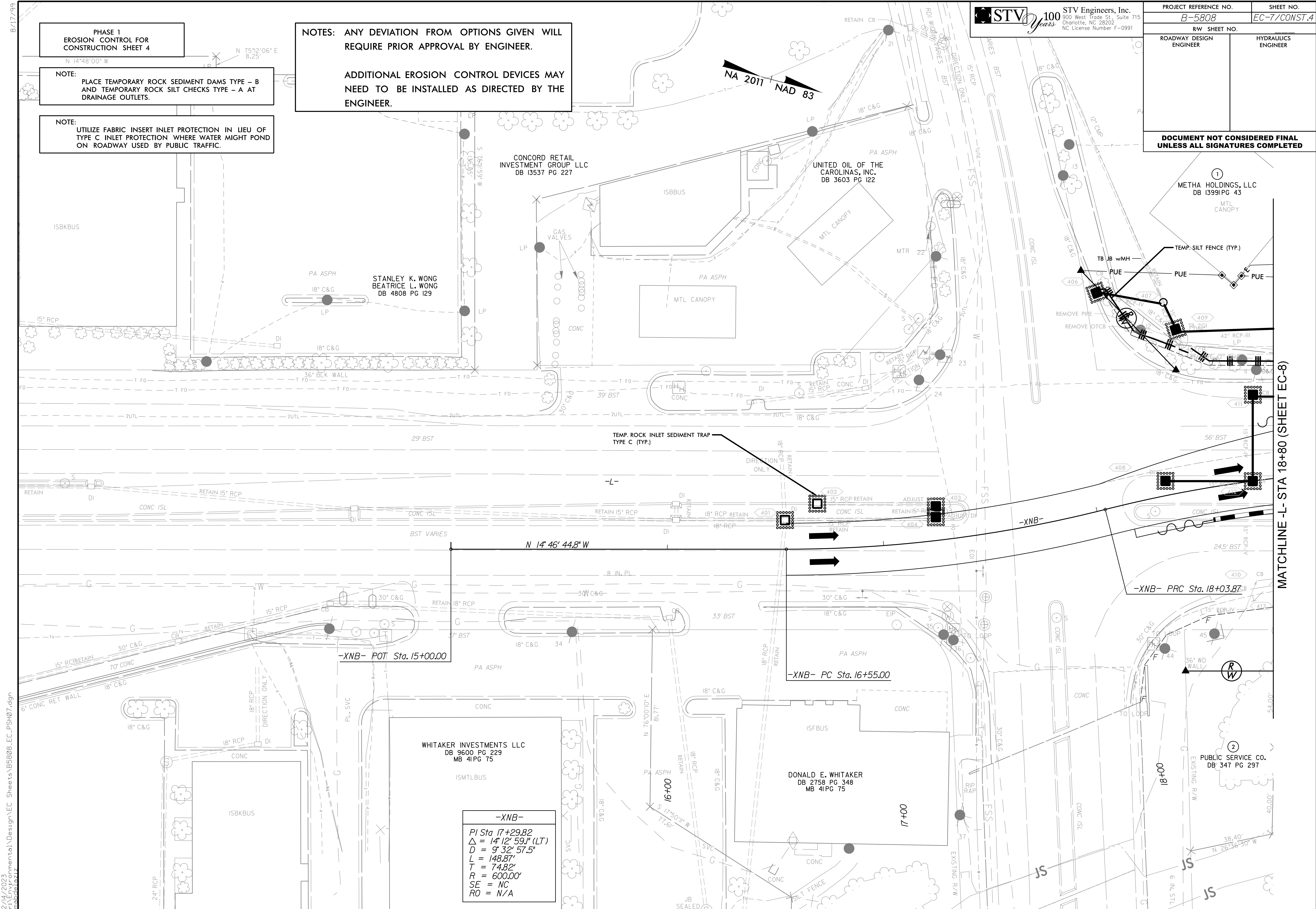
**PHASE 1
EROSION CONTROL FOR
CONSTRUCTION SHEET 4**

NOTE:
PLACE TEMPORARY ROCK SEDIMENT DAMS TYPE - B AND TEMPORARY ROCK SILT CHECKS TYPE - A AT DRAINAGE OUTLETS.

NOTE:
UTILIZE FABRIC INSERT INLET PROTECTION IN LIEU OF TYPE C INLET PROTECTION WHERE WATER MIGHT POND ON ROADWAY USED BY PUBLIC TRAFFIC.

NOTES: ANY DEVIATION FROM OPTIONS GIVEN WILL REQUIRE PRIOR APPROVAL BY ENGINEER.

ADDITIONAL EROSION CONTROL DEVICES MAY NEED TO BE INSTALLED AS DIRECTED BY THE ENGINEER.



-XNB-

PI Sta 17+29.82
 $\Delta = 14^\circ 12' 59.1''$ (LT)
 $D = 9^\circ 32' 57.5''$
 $L = 148.87'$
 $T = 74.82'$
 $R = 600.00'$
 $SE = NC$
 $RO = N/A$

MATCHLINE L- STA 18+80 (SHEET EC-8)