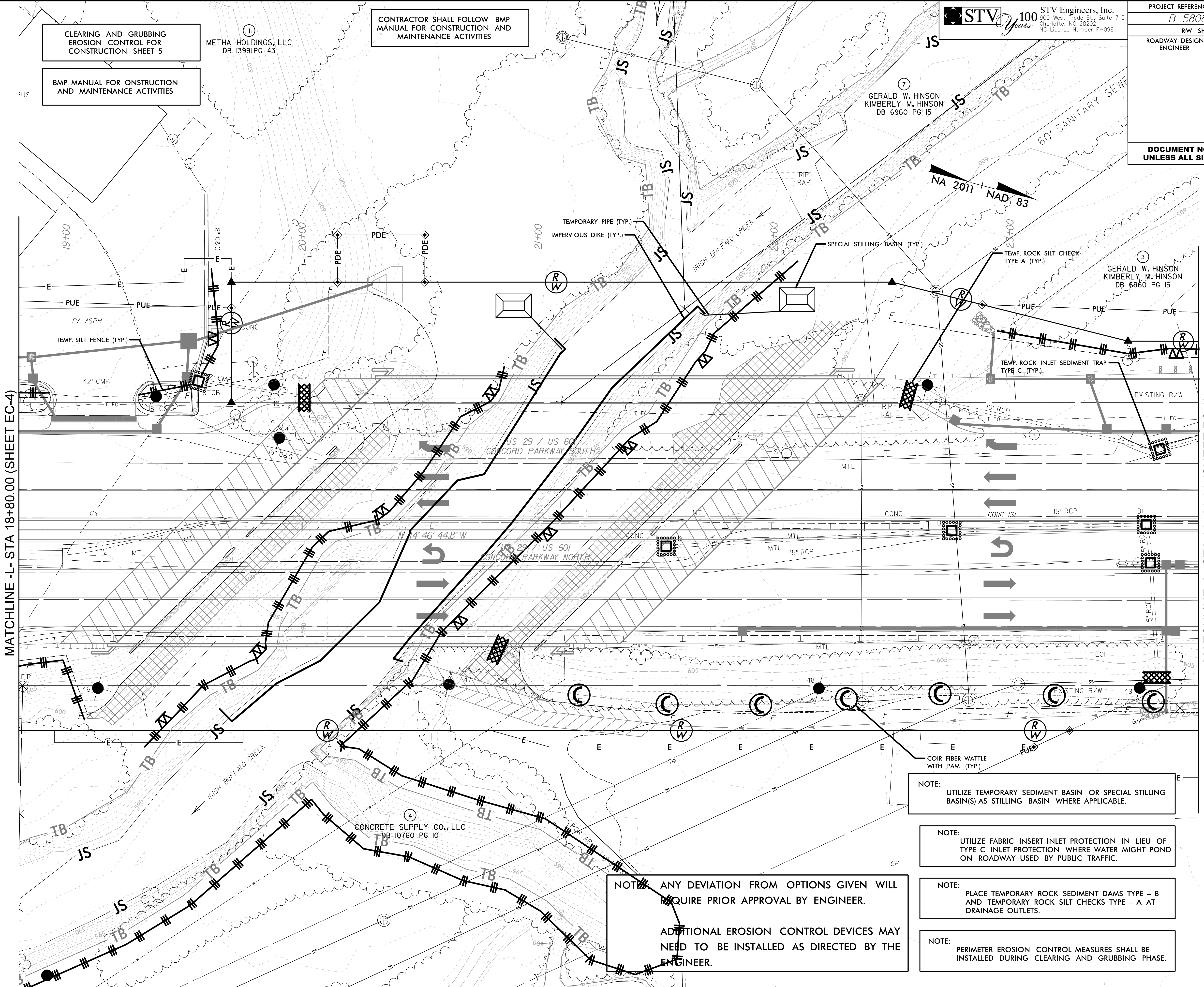


8/17/99

2/16/2023
C:\Users\jacob\OneDrive\Documents\Design\EC_Sheets\B5608_EC_PSH05.dgn
jacob



CLEARING AND GRUBBING
EROSION CONTROL FOR
CONSTRUCTION SHEET 5

BMP MANUAL FOR ONSTRUCTION
AND MAINTENANCE ACTIVITIES

METHA HOLDINGS, LLC
DB 13991 PG 43

CONTRACTOR SHALL FOLLOW BMP
MANUAL FOR CONSTRUCTION AND
MAINTENANCE ACTIVITIES

STV 100 Years
STV Engineers, Inc.
900 West Trade St., Suite 715
Charlotte, NC 28202
NC License Number F-0991

PROJECT REFERENCE NO. <i>B-5808</i>	SHEET NO. <i>EC-5/CONST.5</i>
RW SHEET NO.	HYDRAULICS ENGINEER
ROADWAY DESIGN ENGINEER	
DOCUMENT NOT CONSIDERED FINAL UNLESS ALL SIGNATURES COMPLETED	

NOTE:
UTILIZE TEMPORARY SEDIMENT BASIN OR SPECIAL STILLING BASIN(S) AS STILLING BASIN WHERE APPLICABLE.

NOTE:
UTILIZE FABRIC INSERT INLET PROTECTION IN LIEU OF TYPE C INLET PROTECTION WHERE WATER MIGHT POND ON ROADWAY USED BY PUBLIC TRAFFIC.

NOTE:
PLACE TEMPORARY ROCK SEDIMENT DAMS TYPE - B AND TEMPORARY ROCK SILT CHECKS TYPE - A AT DRAINAGE OUTLETS.

NOTE:
PERIMETER EROSION CONTROL MEASURES SHALL BE INSTALLED DURING CLEARING AND GRUBBING PHASE.

NOTE: ANY DEVIATION FROM OPTIONS GIVEN WILL REQUIRE PRIOR APPROVAL BY ENGINEER.

ADDITIONAL EROSION CONTROL DEVICES MAY NEED TO BE INSTALLED AS DIRECTED BY THE ENGINEER.