

8/17/99



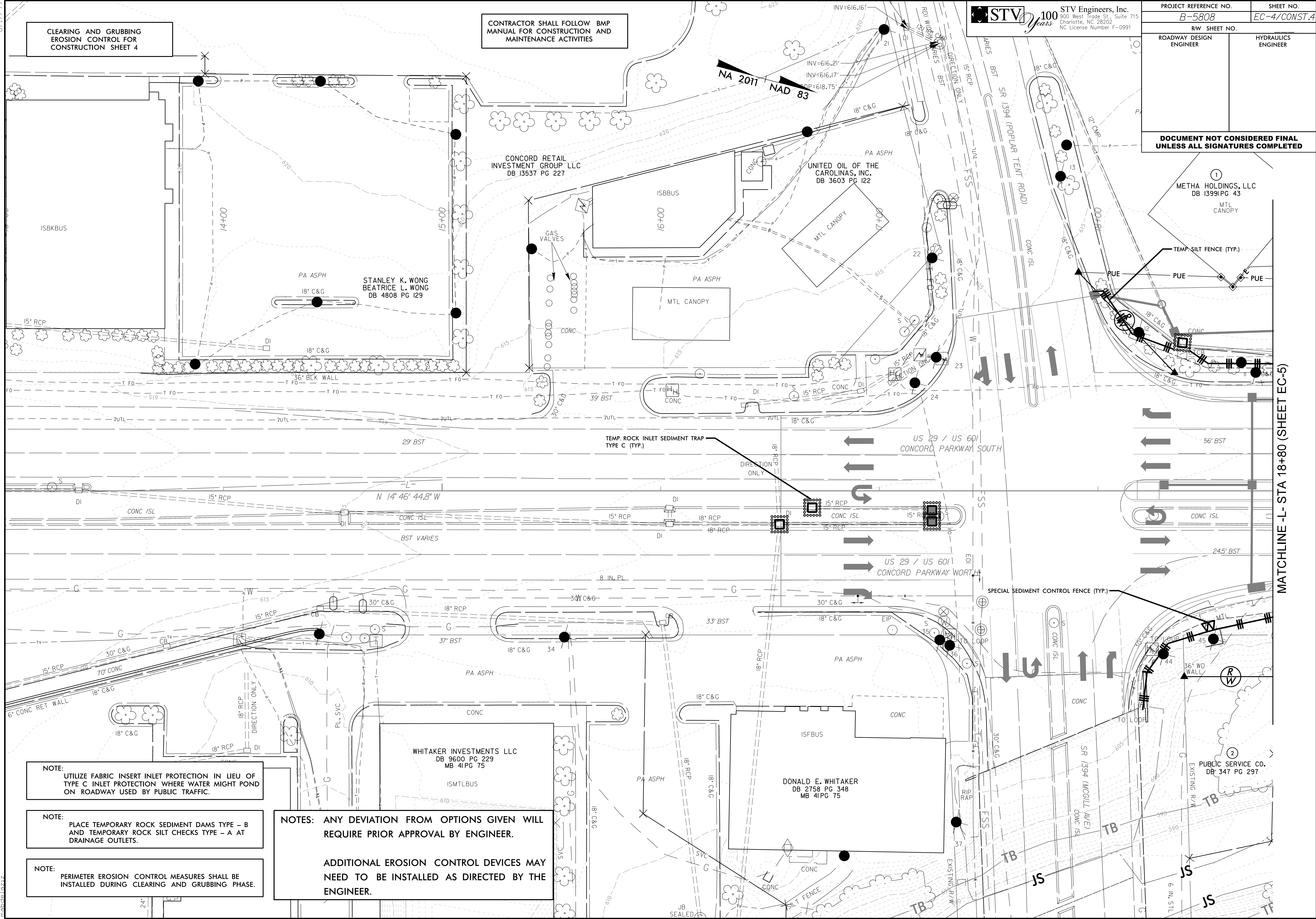
PROJECT REFERENCE NO. B-5808	SHEET NO. EC-4/CONST.4
RW SHEET NO.	HYDRAULICS ENGINEER
ROADWAY DESIGN ENGINEER	

STV Engineers, Inc.  
300 West Trade St., Suite 715  
Charlotte, NC 28202  
NC License Number F-0991

**DOCUMENT NOT CONSIDERED FINAL  
UNLESS ALL SIGNATURES COMPLETED**

CLEARING AND GRUBBING  
EROSION CONTROL FOR  
CONSTRUCTION SHEET 4

CONTRACTOR SHALL FOLLOW BMP  
MANUAL FOR CONSTRUCTION AND  
MAINTENANCE ACTIVITIES



NOTE:  
UTILIZE FABRIC INSERT INLET PROTECTION IN LIEU OF  
TYPE C INLET PROTECTION WHERE WATER MIGHT POND  
ON ROADWAY USED BY PUBLIC TRAFFIC.

NOTE:  
PLACE TEMPORARY ROCK SEDIMENT DAMS TYPE - B  
AND TEMPORARY ROCK SILT CHECKS TYPE - A AT  
DRAINAGE OUTLETS.

NOTE:  
PERIMETER EROSION CONTROL MEASURES SHALL BE  
INSTALLED DURING CLEARING AND GRUBBING PHASE.

NOTES: ANY DEVIATION FROM OPTIONS GIVEN WILL  
REQUIRE PRIOR APPROVAL BY ENGINEER.

ADDITIONAL EROSION CONTROL DEVICES MAY  
NEED TO BE INSTALLED AS DIRECTED BY THE  
ENGINEER.

2/14/2023 mental\Design\EC\_Sheets\B5808\_EC\_PSH04.dgn