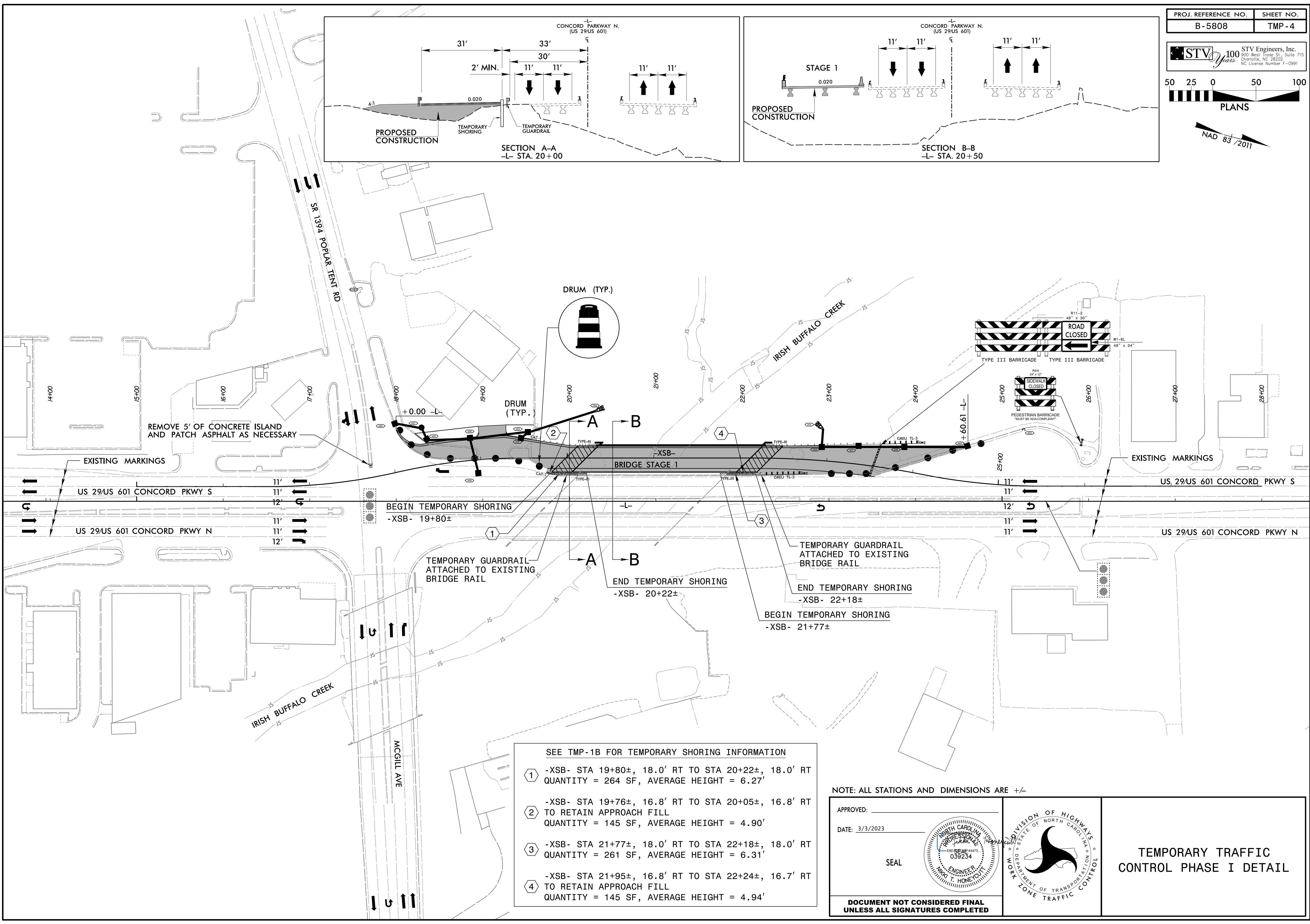
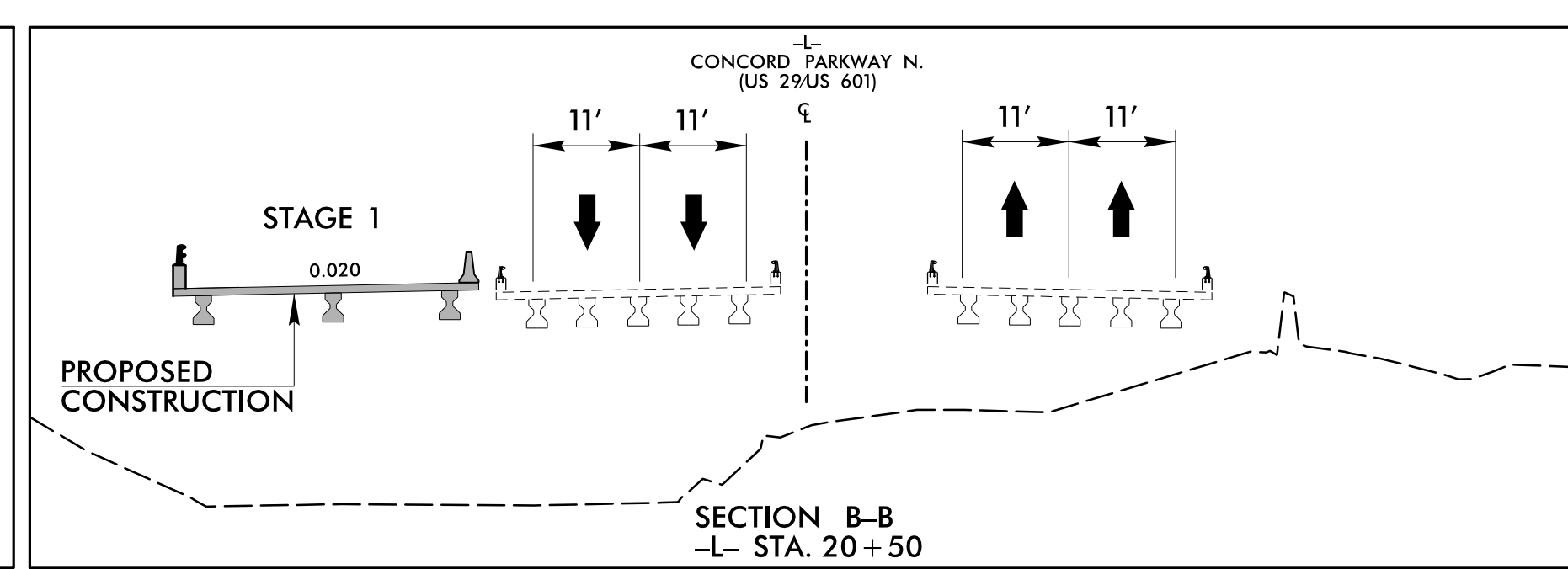
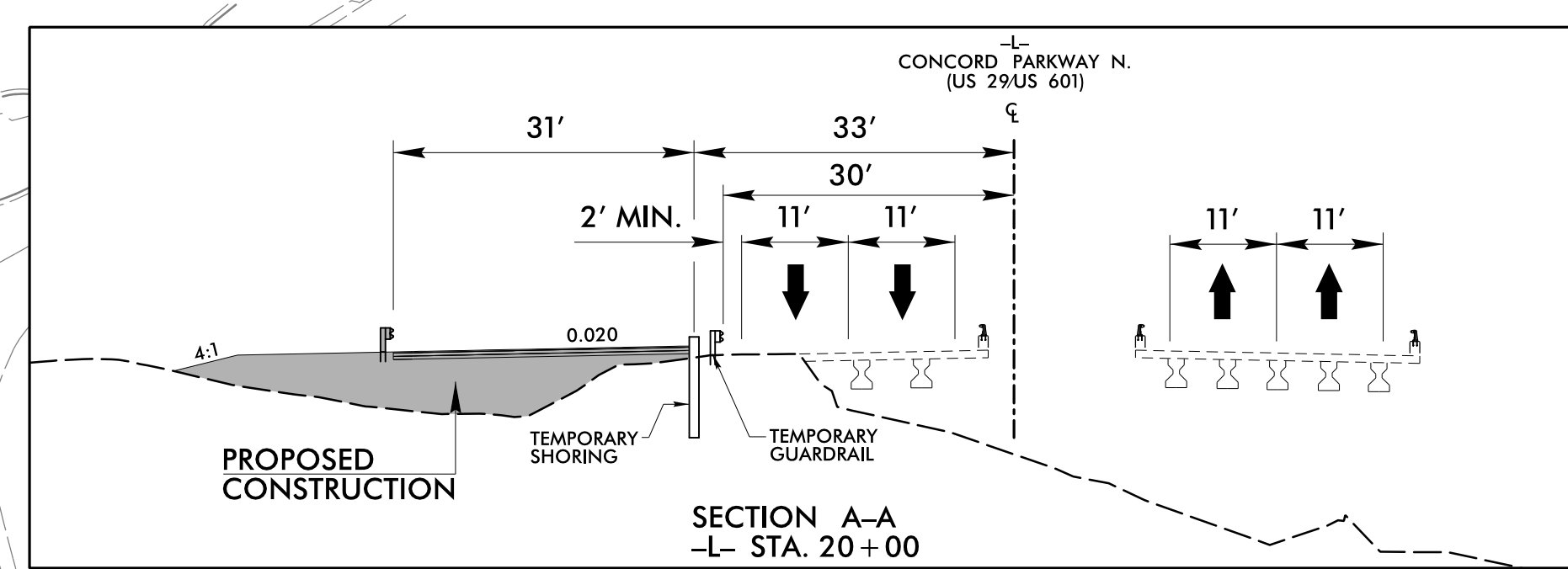


PROJ. REFERENCE NO. B-5808	SHEET NO. TMP-4
-------------------------------	--------------------

STV 100 STV Engineers, Inc.
900 West Trade St., Suite 715
Charlotte, NC 28202
NC License Number F-0991

50 25 0 50 100
PLANS

NAD 83 / 2011



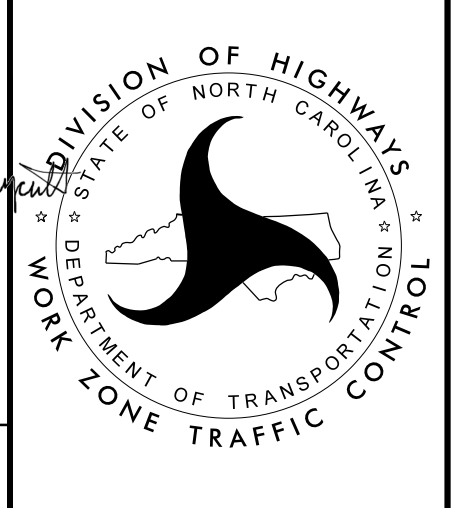
- SEE TMP-1B FOR TEMPORARY SHORING INFORMATION
- ① -XSB- STA 19+80±, 18.0' RT TO STA 20+22±, 18.0' RT QUANTITY = 264 SF, AVERAGE HEIGHT = 6.27'
 - ② -XSB- STA 19+76±, 16.8' RT TO STA 20+05±, 16.8' RT TO RETAIN APPROACH FILL QUANTITY = 145 SF, AVERAGE HEIGHT = 4.90'
 - ③ -XSB- STA 21+77±, 18.0' RT TO STA 22+18±, 18.0' RT QUANTITY = 261 SF, AVERAGE HEIGHT = 6.31'
 - ④ -XSB- STA 21+95±, 16.8' RT TO STA 22+24±, 16.7' RT TO RETAIN APPROACH FILL QUANTITY = 145 SF, AVERAGE HEIGHT = 4.94'

NOTE: ALL STATIONS AND DIMENSIONS ARE +/-

APPROVED: _____
DATE: 3/3/2023

SEAL

DOCUMENT NOT CONSIDERED FINAL
UNLESS ALL SIGNATURES COMPLETED



DIVISION OF HIGHWAYS
STATE OF NORTH CAROLINA
DEPARTMENT OF TRANSPORTATION
WORK ZONE TRAFFIC CONTROL

TEMPORARY TRAFFIC CONTROL PHASE I DETAIL

2/10/2023
F:\TrafficControl\TCPTMP_SHT\B5808_rdy_TMP-04.dgn
mabdelaziz