

8/17/19

STAGED CONSTRUCTION DETAIL FOR -XSB- AND -XNB-

STV 100 Years
 STV Engineers, Inc.
 300 West Trade St., Suite 715
 Charlotte, NC 28202
 NC License Number F-0991

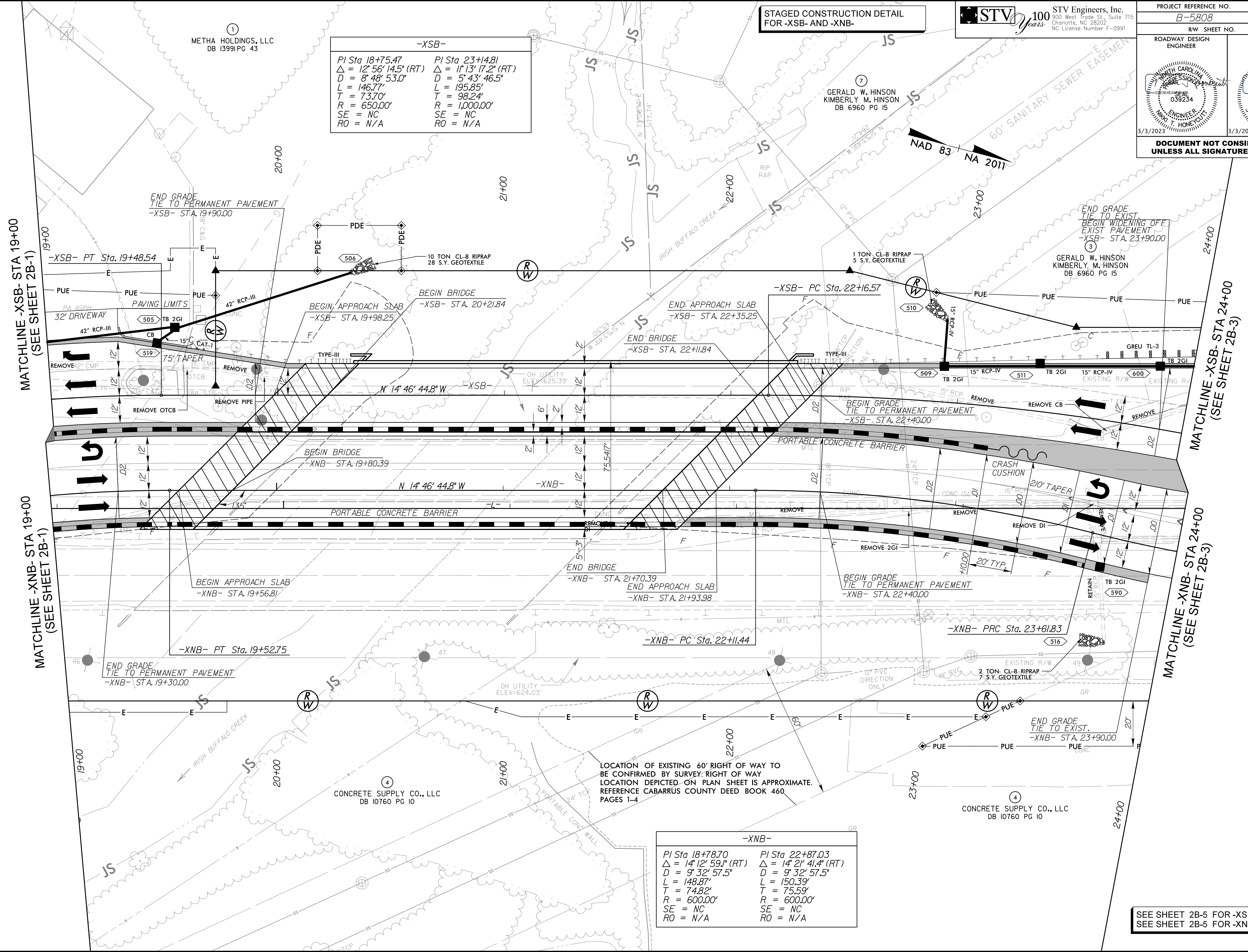
PROJECT REFERENCE NO. B-5808	SHEET NO. 2B-2
RW SHEET NO.	HYDRAULICS ENGINEER
ROADWAY DESIGN ENGINEER	ENGINEER
DOCUMENT NOT CONSIDERED FINAL UNLESS ALL SIGNATURES COMPLETED	

-XSB-

PI Sta 18+75.47	PI Sta 23+14.81
$\Delta = 12^\circ 56' 14.5" (RT)$	$\Delta = 11^\circ 13' 17.2" (RT)$
$D = 8^\circ 48' 53.0"$	$D = 5^\circ 43' 46.5"$
$L = 146.77'$	$L = 195.85'$
$T = 73.70'$	$T = 98.24'$
$R = 650.00'$	$R = 1,000.00'$
SE = NC	SE = NC
RO = N/A	RO = N/A

-XNB-

PI Sta 18+78.70	PI Sta 22+87.03
$\Delta = 14^\circ 12' 59.1" (RT)$	$\Delta = 14^\circ 21' 41.4" (RT)$
$D = 9^\circ 32' 57.5"$	$D = 9^\circ 32' 57.5"$
$L = 148.87'$	$L = 150.39'$
$T = 74.82'$	$T = 75.59'$
$R = 600.00'$	$R = 600.00'$
SE = NC	SE = NC
RO = N/A	RO = N/A



LOCATION OF EXISTING 60' RIGHT OF WAY TO BE CONFIRMED BY SURVEY. RIGHT OF WAY LOCATION DEPICTED ON PLAN SHEET IS APPROXIMATE. REFERENCE CABARRUS COUNTY DEED BOOK 460, PAGES 1-4

SEE SHEET 2B-5 FOR -XSB- PROFILE
 SEE SHEET 2B-5 FOR -XNB- PROFILE

3/3/2023
 \\pc01\share\st\B5808_rdy_psh\02B-2.dgn
 mabdel021