

p:\gfn\pw\ben\ty.com\gfn\pw-01\Documents\Projects\67945\5-Work\King\Task 005 - I-5889B Rehab\Structures\CAD\2.0 100% Plans\407\_011\_I-5889B\_SMJ\_OVERHANG\_UNDERSIDE\_REPAIR  
 7/25/2022 10:36:34 AM pdf\_color\_gfclt\_FS.plt I-5889B.tbl

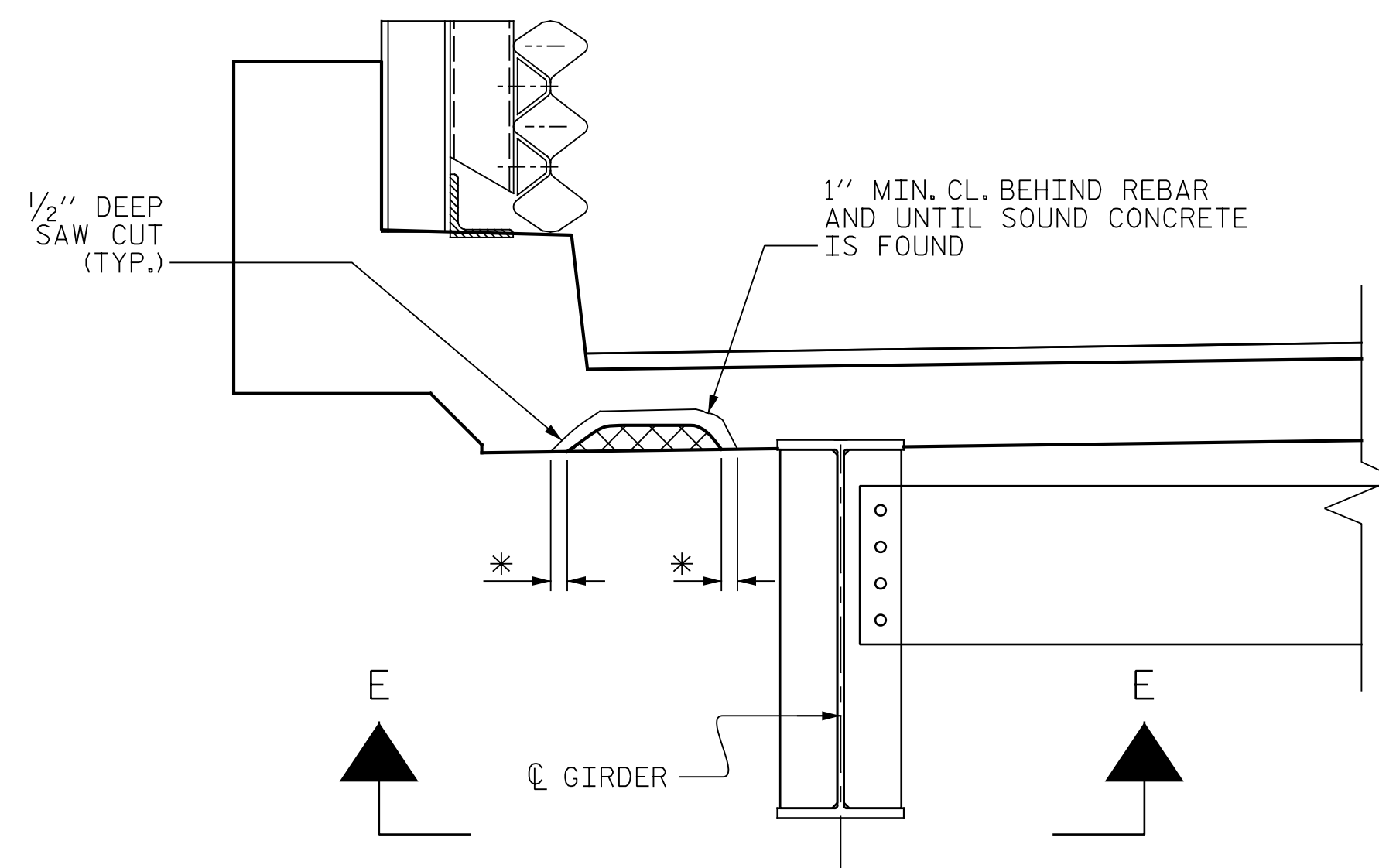
**NOTES**

CONTRACTOR SHALL REMOVE SURFACE CONCRETE TO VERIFY THAT SAWCUT DEPTH WILL NOT DAMAGE EXISTING REINFORCING STEEL.

CONTRACTOR SHALL SAW CUT TO A NOMINAL DEPTH OF 1/2" BUT REINFORCING STEEL SHALL NOT BE DAMAGED.

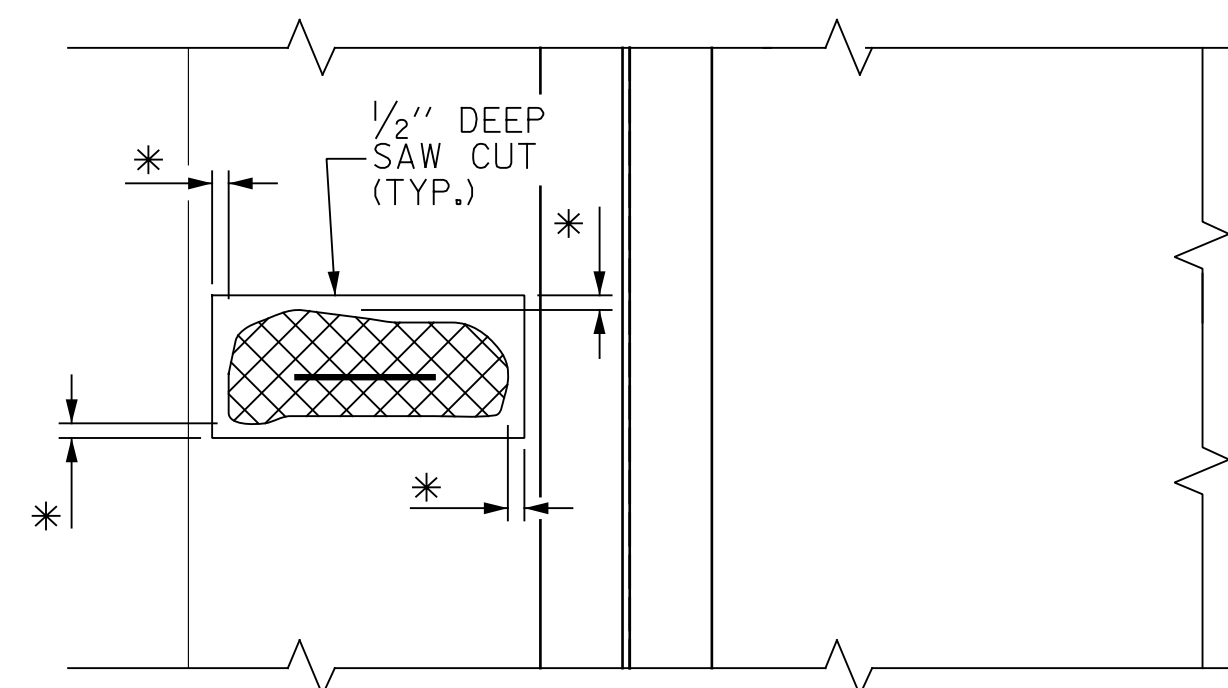
CONTRACTOR SHALL SAW CUT THE REPAIR AREAS SO THAT THE CORNERS ARE SQUARE AS INDICATED ON THE DETAILS.

FOR SHOTCRETE REPAIRS, SEE SPECIAL PROVISIONS..



**TYPICAL SECTION**

\* REMOVE CONCRETE UNTIL SOUND CONCRETE IS FOUND (1" MIN. DEPTH)



**SECTION E-E**

**OVERHANG DETAILS**

\* REMOVE CONCRETE UNTIL SOUND CONCRETE IS FOUND (1" MIN. DEPTH)



NOTE:  
 EXISTING REBAR TO REMAIN IN PLACE.  
 CLEAN AND REPAIR AS NECESSARY.

PROJECT NO. I-5889B  
BUNCOMBE COUNTY  
 BRIDGE NO. 100334 & 100339

STATE OF NORTH CAROLINA  
 DEPARTMENT OF TRANSPORTATION  
 RALEIGH

**OVERHANG UNDERSIDE  
 REPAIR DETAILS**



DocuSigned by:  
 Eric B. Nelson 7/25/2022  
 ACB80211907ACD

DOCUMENT NOT CONSIDERED  
 FINAL UNLESS ALL  
 SIGNATURES COMPLETED

REVISIONS						SHEET NO.
NO.	BY:	DATE:	NO.	BY:	DATE:	SD-6
1			3			TOTAL SHEETS
2			4			129



DRAWN BY : J. MYA DATE : 6/2022  
 CHECKED BY : J. YANNACCONE DATE : 6/2022