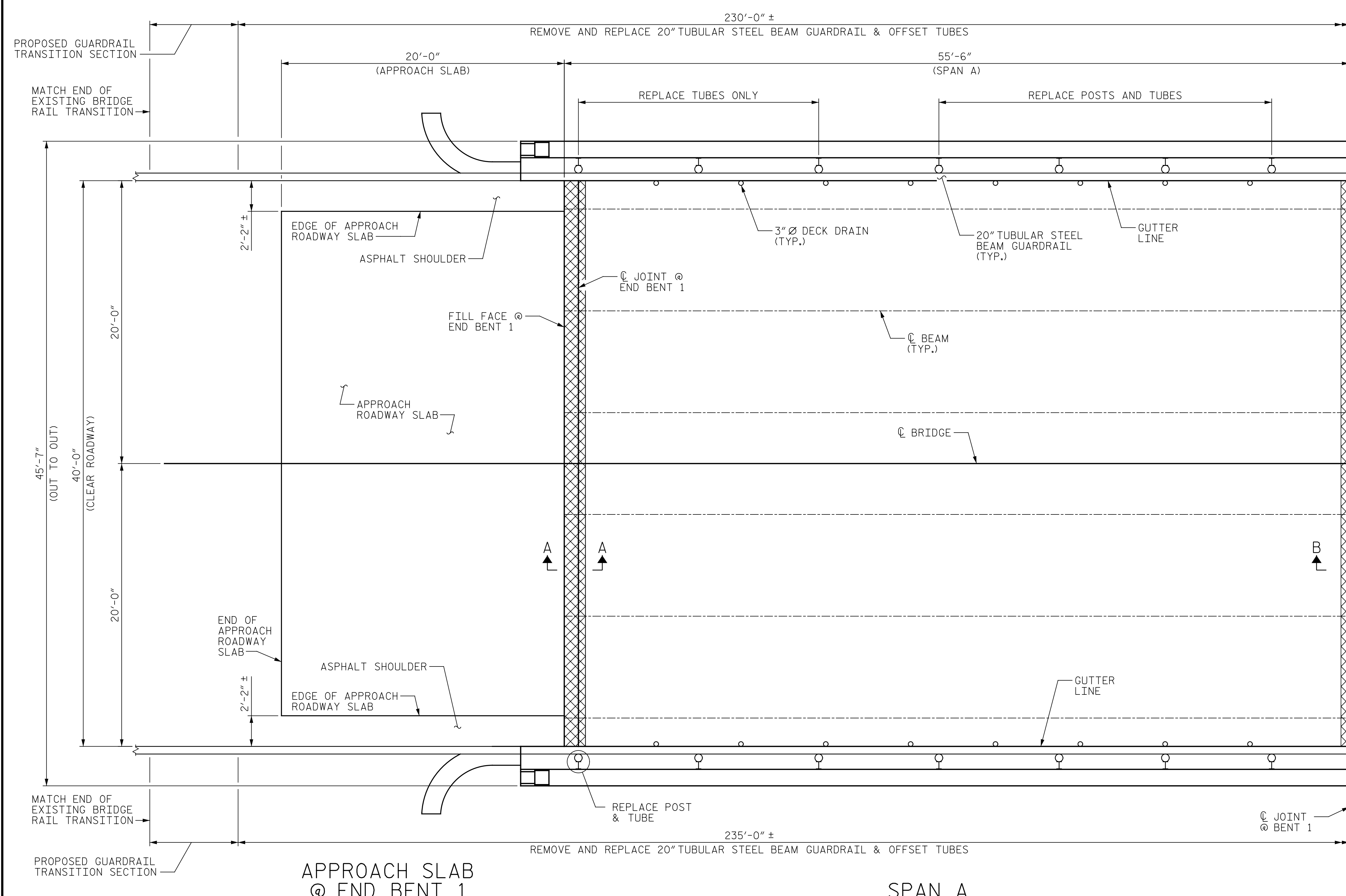


p:\gfn\p-w\benfley.com\gfn\p-w-01\Documents\Projects\67945\5-WorKing\Task 005 - I-5889B Rehab\Structures\CAD\2.0 100% Plans\401\_013\_I-5889B\_SMJ\_S01\_004\_100334  
 I-5889B+TBI  
 7/21/2022 3:44:15 PM pdf\_color\_gf.ctb-FS.plt



**NOTES:**

REPAIR LOCATIONS AND ESTIMATED QUANTITIES ARE GIVEN WITH THE BEST INFORMATION AVAILABLE. IF ADDITIONAL REPAIRS NOT SHOWN ON THE DRAWINGS ARE DEEMED NECESSARY BY THE ENGINEER, THE ENGINEER WILL NOTE ON THE DRAWINGS THE APPROXIMATE LOCATIONS AND DESCRIPTION OF THE REPAIRS AND ADJUST THE ACTUAL QUANTITIES ENTERED INTO THE REPAIR QUANTITY TABLE.

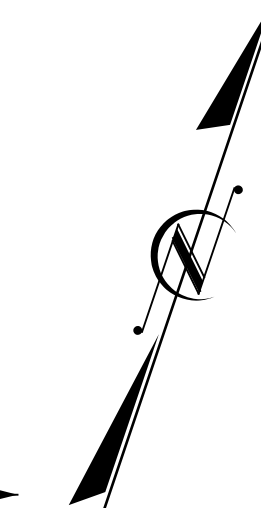
CONCRETE COVER FOR TOP BARS IN THE DECK SLAB IS 1 1/16" PER THE EXISTING BRIDGE PLANS.

FOR SECTION A-A AND B-B, SEE "JOINT DETAILS" SHEET.

FOR FINE MILLING, SEE SPECIAL PROVISIONS.

THE CONTRACTOR SHALL REMOVE AND REPLACE THE 20" TUBULAR STEEL BEAM GUARDRAIL. THE ENGINEER WILL SELECT THOSE SECTIONS OF THE EXISTING GUARDRAIL SUITABLE FOR FUTURE USE AND TRANSPORT THEM TO A STOCKPILE FOR THE USE OF THE DEPARTMENT. THE REMAINING GUARDRAIL SECTIONS SHALL BECOME THE PROPERTY OF THE CONTRACTOR AND SHALL BE REMOVED FROM THE PROJECT.

FOR DIMENSIONS OF TUBULAR BEAM GUARDRAIL, POST AND TUBES, SEE "TUBULAR BEAM GUARDRAIL DETAILS" SHEET.



BRIDGE RAIL QUANTITIES (FOR ENTIRE BRIDGE)	
REMOVE 20" TUBULAR STEEL BEAM GUARDRAIL	485 LF
20" TUBULAR STEEL BEAM GUARDRAIL	465 LF
REMOVE AND REPLACE W 6X9 POSTS	6 EA
W-TR STEEL BEAM GUARDRAIL TRANSITION SECTIONS	3 EA

- BRIDGE JOINT DEMOLITION
- APPROX. CLASS II SURFACE PREPARATION
- APPROX. CLASS III SURFACE PREPARATION
- UNDERSIDE OF DECK/OVERHANG REPAIR
- ERI EPOXY RESIN INJECTION

REPAIR QUANTITY TABLE					UNDERSIDE OF DECK REPAIR			
TOP OF DECK REPAIR	APPROACH SLAB 1		SPAN A		SHOTCRETE REPAIR			
	ESTIMATE	ACTUAL	ESTIMATE	ACTUAL	AREA SF	VOLUME CF	AREA SF	VOLUME CF
FINE MILLING	79 SY		245 SY		0.0	0.0		
HYDRO-DEMOLITION OF BRIDGE DECK	79 SY		245 SY		0.0	0.0		
CLASS II SURFACE PREPARATION	0.0 SY		0.0 SY		0.0	0.0		
CLASS III SURFACE PREPARATION	0.0 SY		0.0 SY		0.0	0.0		
LATEX MODIFIED CONCRETE - VES OVERLAY	5.9 CY		18.3 CY					
PLACING & FINISHING LMC - VES OVERLAY	79 SY		245 SY					
BRIDGE JOINT DEMOLITION	37 SF		40 SF					
GROOVING BRIDGE FLOORS	695 SF		2052 SF					
							ESTIMATE	ACTUAL
							0.0 LF	

VALUES IN CHART REPRESENT ESTIMATED UNDERSIDE OF DECK REPAIR TOTALS AFTER REMOVAL OF UNSOUND CONCRETE, MINIMUM OF 1" BEHIND REBAR AND MINIMUM 2" CLEAR TO SAWCUT. FOR REPAIR DETAILS, SEE "OVERHANG & DIAPHRAGM REPAIR DETAILS" SHEET.

PAYMENT FOR CLASS II AND CLASS III SURFACE PREPARATION IS BASED ON THE SQUARE YARDS OF ADDITIONAL DEMOLITION REQUIRED FOLLOWING HYDRO-DEMOLITION OF THE BRIDGE DECK. SEE "OVERLAY SURFACE PREPARATION" SPECIAL PROVISION.

PROJECT NO. I-5889B  
BUNCOMBE COUNTY  
 BRIDGE NO. 100334

SHEET 1 OF 3

STATE OF NORTH CAROLINA  
 DEPARTMENT OF TRANSPORTATION  
 RALEIGH

PLAN OF SPANS  
 SPAN A AND  
 APPROACH SLAB



DRAWN BY: M. LEE/J. MYA DATE: 6/2022  
 CHECKED BY: J. YANACONE DATE: 6/2022



DOCUMENT NOT CONSIDERED FINAL UNLESS ALL SIGNATURES COMPLETED

REVISIONS						SHEET NO.
NO.	BY:	DATE:	NO.	BY:	DATE:	
1			3			S1-4
2			4			TOTAL SHEETS 133