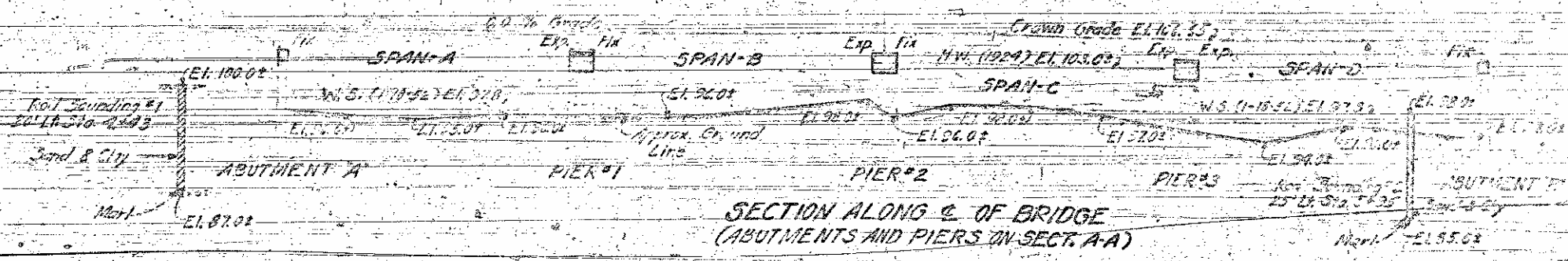
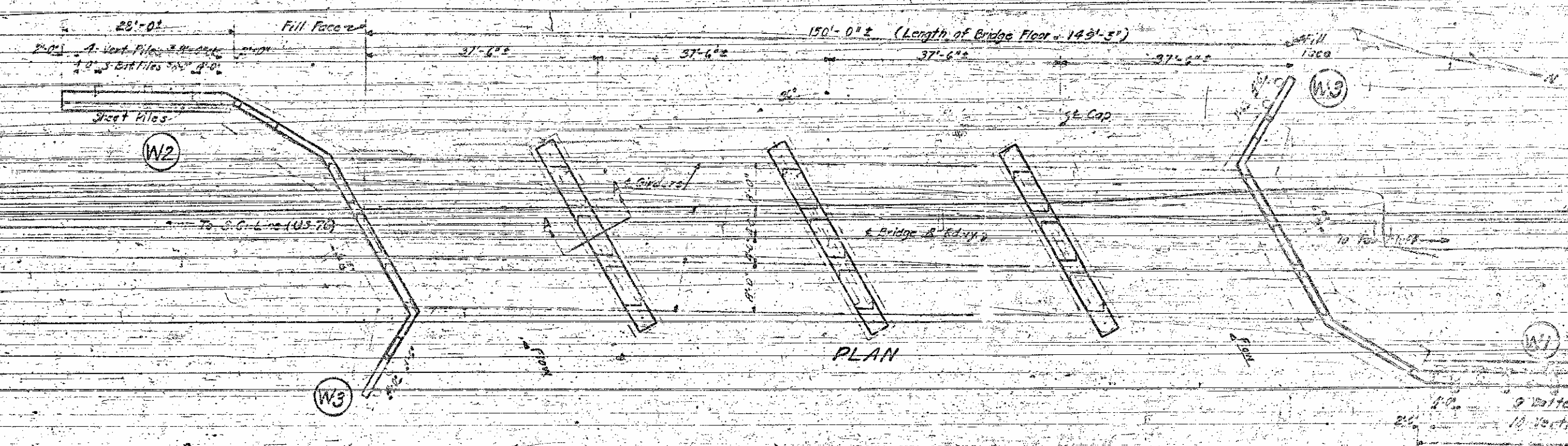


DATE	PROJECT NO.	SHEET NO.
5/21/52	3353	5



SECTION ALONG C-C OF BRIDGE  
(ABUTMENTS AND PIERS ON SECT. A-A)

Notes:  
 1. Assume all to be in place by State Forces.  
 2. Assume all to be in place by State Forces.  
 3. Assume all to be in place by State Forces.  
 4. Assume all to be in place by State Forces.  
 5. Assume all to be in place by State Forces.  
 6. Assume all to be in place by State Forces.  
 7. Assume all to be in place by State Forces.  
 8. Assume all to be in place by State Forces.  
 9. Assume all to be in place by State Forces.  
 10. Assume all to be in place by State Forces.



PLAN

9 battered piles 2'-6" dia.  
 10 vertical piles 2'-0" dia.  
 20'-0" dia.

Bridgett's

PROJECT NO. 3353  
 COLUMBUS COUNTY  
 STATION 7+20

	Class A Concrete		Reinf. Steel		Erection	Formwork	Construction	Removal of Existing Structures
	Cu. Yds.	Lbs.	F.F.M.	F.F.M.				
Superstructure	207.7	52,538						
Abut. A & Wing W2	1.2	197	544	63				
Pier #1	5.2	722						
Pier #2	2.2	782						
Pier #3	8.2	1,286						
Abut. B & Wing W3	4.2	757	244	33	2	19	47	
Wing W1	12.8	12,220	1,414	915	19	28	318	
Wing W2	4.7	573	214	224	7	12	112	
Winged Piers	1.1	176						
TOTAL	241.5	62,172	2,414	1,434	30	75	528	

STATE OF NORTH CAROLINA  
 STATE HIGHWAY AND  
 PUBLIC WORKS COMMISSION

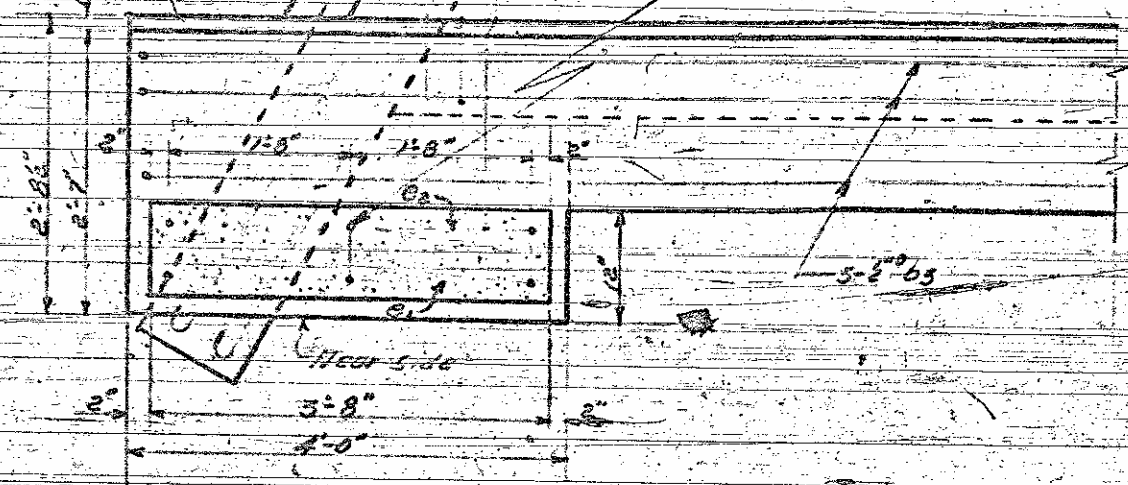
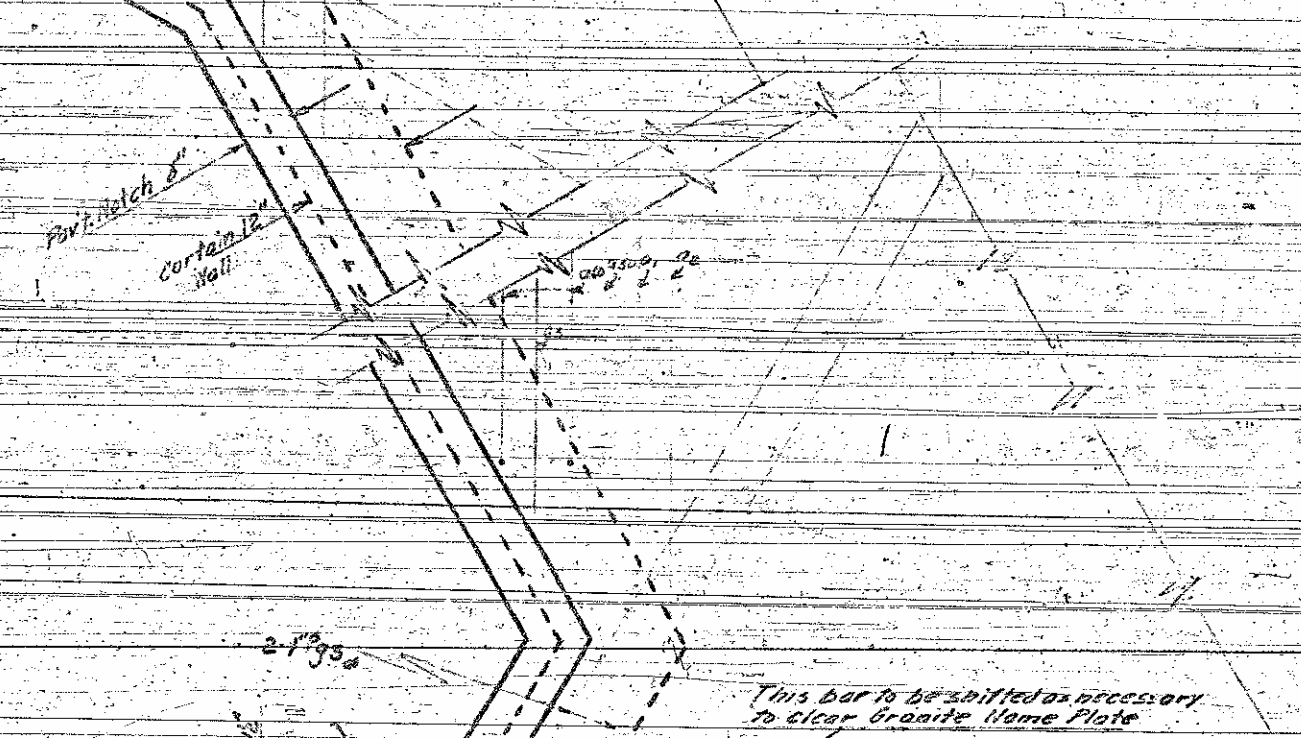
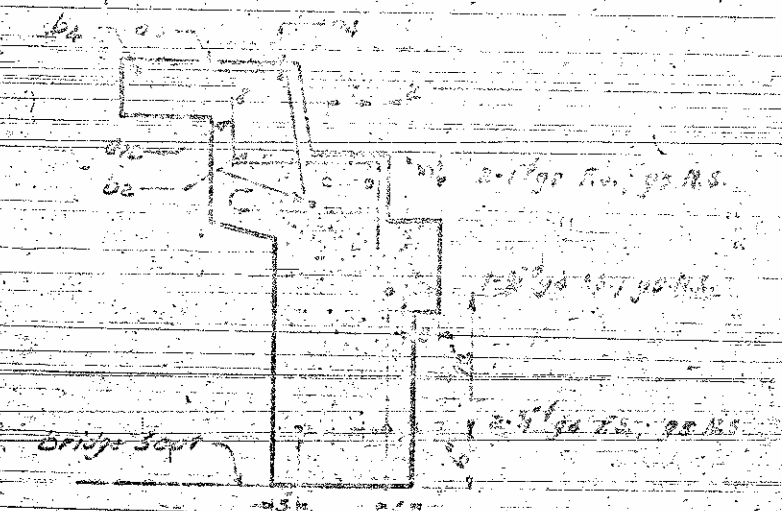
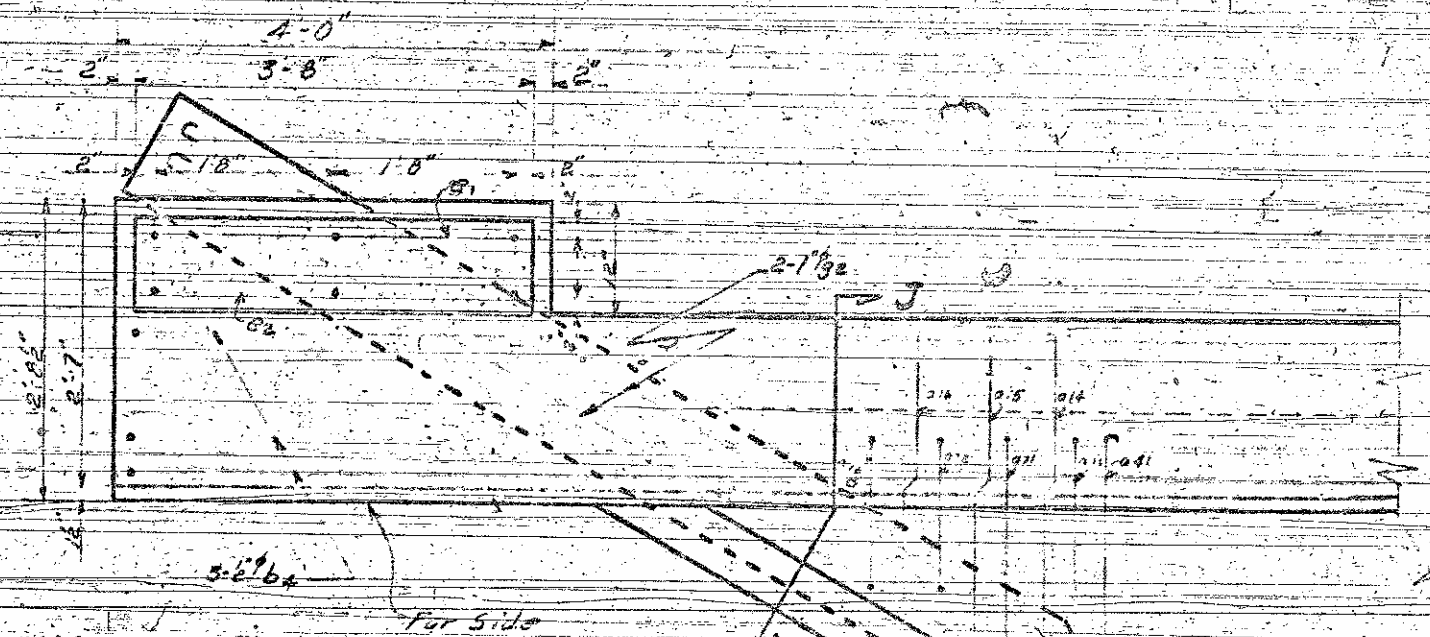
GENERAL DRAWING  
 FOR BRIDGE OVER  
 GARWAY SWAMP

MAY 1952

SPECIAL  
 DRAWN BY  
 CHECKED BY  
 DATE

B.M. Top of Wing on Rt. Abut. A - Elev. 103.00

NO.	DATE	BY	CHKD.
1	11/15/52	J. S. S.	J. S. S.

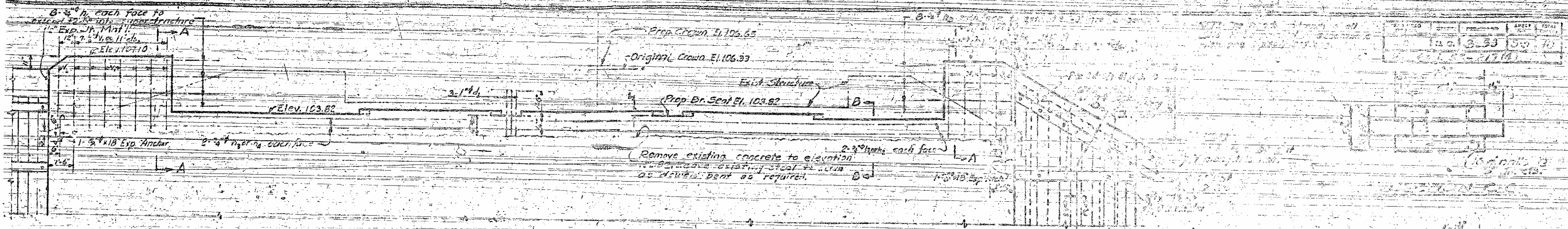


PROJECT NO. 115  
 COLUMBUS COUNTY  
 STATION 5+70

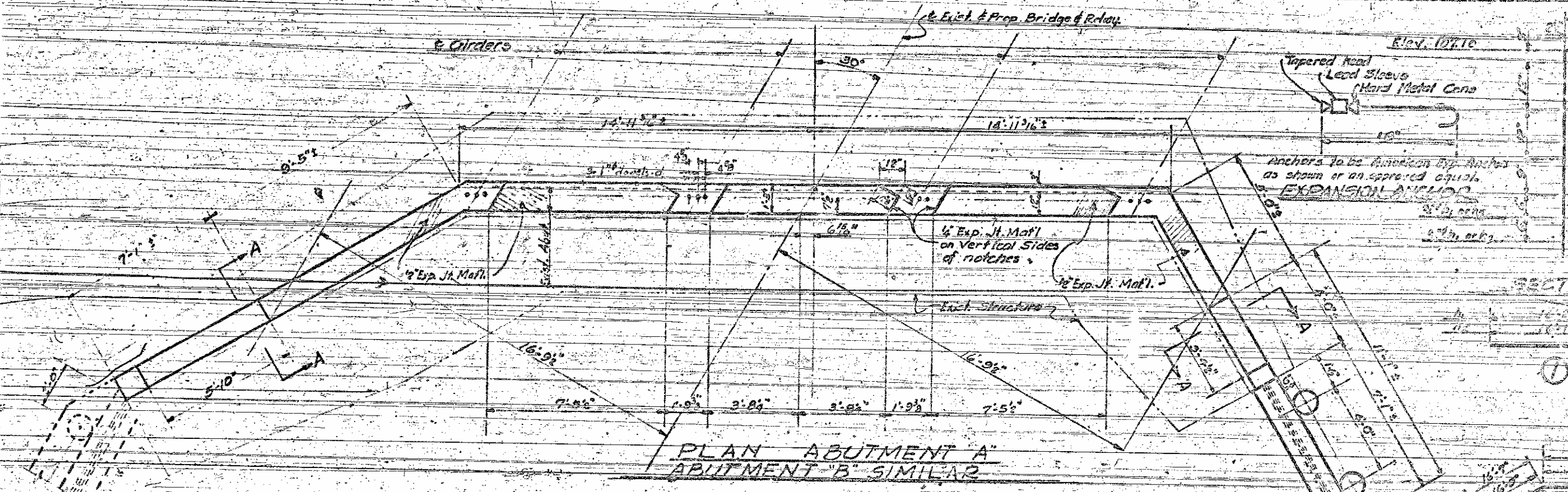
STATE OF NORTH CAROLINA  
 STATE HIGHWAY AND  
 PUBLIC WORKS COMMISSION  
 SUPERSTRUCTURE  
 DETAILS  
 11/15/52

DESIGNED BY	DATE
DRAWN BY	DATE
CHECKED BY	DATE
APPROVED BY	DATE

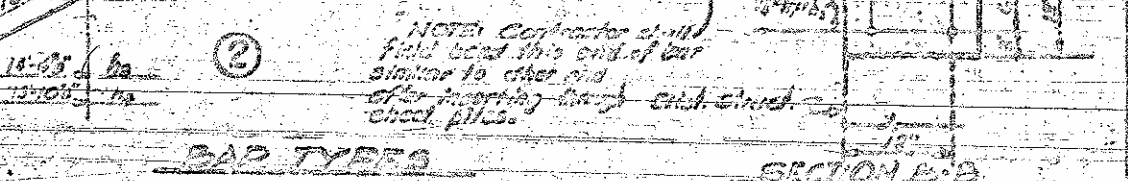
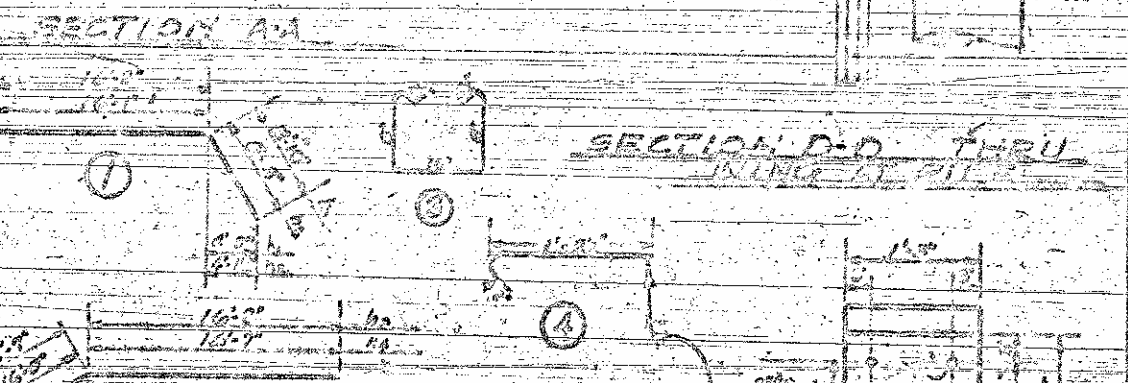
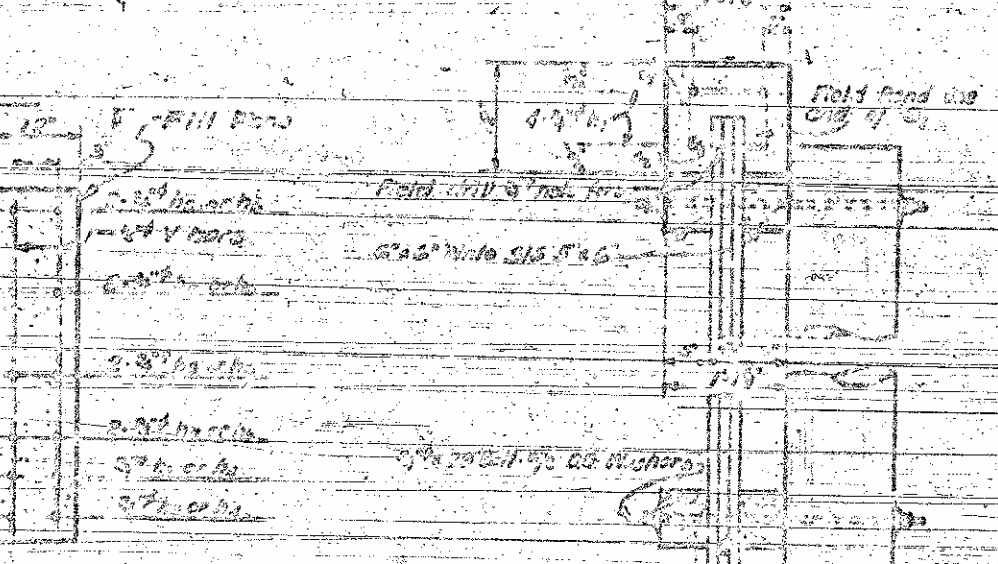
DETAIL OF END POSTS



ELEVATION ABUTMENT 'A'  
ABUTMENT 'B' SIMILAR



PLAN ABUTMENT 'A'  
ABUTMENT 'B' SIMILAR



WING W1 OR W2  
(See Sheet 5-6 for details)

**BILL OF MATERIAL FOR ONE WING W1**

**CREOSOTED TIMBER SHEET PILES**

ITEM	No.	Size	Length	FB.M.
Sheeting	6	1-1/2" x 11-3/4"	17-5'	103
do	9	do	16-6'	149
do	9	do	15-6'	160
do	9	do	14-6'	131
<b>TOTAL CREOSOTED SHEET PILES</b>				<b>524</b>

**CREOSOTED TIMBER**

Wales	No.	Size	Length	FB.M.
Wales	2	6-0" x 8-0"	8-0'	31
Wales	2	6-0" x 8-0"	7-0'	22
<b>TOTAL CREOSOTED TIMBER</b>				<b>53</b>

**REINFORCING STEEL FOR ABUTMENT A OR B & ONE WING W1**

Bar	No.	Size	Type	Length	Weight
d1	12	1-0"	str.	2-6"	80
h1	2	3/4"	1	25-0"	75
h2	2	3/4"	1	24-8"	73
h3	2	3/4"	2	32-9"	93
h4	2	3/4"	2	32-7"	93
h5	2	3/4"	str.	6-7"	29
h6	2	3/4"	str.	9-8"	116
h7	4	3/4"	str.	7-8"	46
s1	2	2-0"	3	2-11"	16
s2	2	2-0"	4	1-7"	8
v1	22	3/8"	str.	3-11"	133
v2	4	3/8"	str.	3-9"	70
<b>REINFORCING STEEL - Lbs.</b>					<b>797</b>

**BILL OF MATERIAL HARDWARE FOR ABUTMENT A OR B & WING W1**

Item	No.	Size	Length	Weight
Bolts	4	3/4"	25"	16
Bolts	6	3/8"	16"	9
O.C. Washer	8	For 3/4" Bolts		6
O.C. Washer	12	For 3/8" Bolts		8
Nails		16d		7
<b>TOTAL HARDWARE - Lbs.</b>				<b>46</b>

NOTE: Concrete displaced by Sheet Piles in Wing W1 Cap has been indicated.

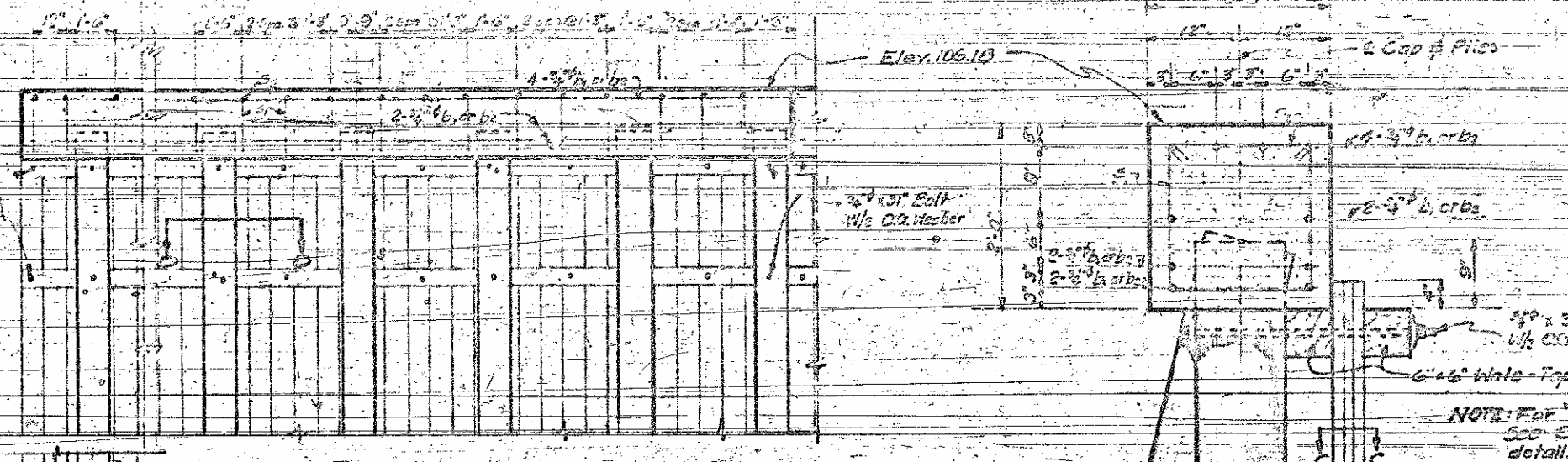
SECTION B-B  
PROJECT NO. 3333  
COLUMBUS COUNTY  
STATION 7+30

STATE OF NORTH CAROLINA  
STATE HIGHWAY AND  
PUBLIC WORKS COMMISSION  
ADUTMENTS, A & B  
AND WING W2  
MAY 1935

DESIGNED BY: J. H. ...  
CHECKED BY: J. H. ...  
DATE: 10/14/1935

P.C. 9353 5/1/50  
50-2,132

37'-0" S.E. S. Shingles - Wing W<sub>1</sub>  
31'-2" S.E. S. Shingles - Wing W<sub>2</sub>



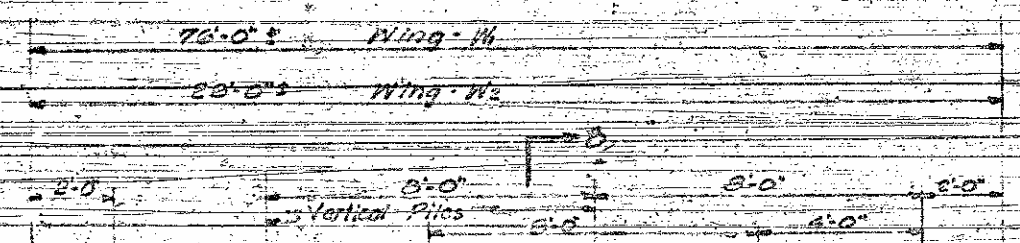
PART ELEVATION - STREAM FACE

NOTE: Sheet Piles to be painted as shown.

NOTE: Construction Joint will be permitted in Cap of Wing W<sub>1</sub> near center of Cap.

NOTE: For SECTION C-C See Sheet 3-3 for details

Batter 3" in 12"



PART PLAN

End of Cap	W <sub>1</sub>	W <sub>2</sub>	W <sub>3</sub>	W <sub>4</sub>	W <sub>5</sub>
Front & Back Bat. Wales	W <sub>1</sub>	W <sub>2</sub>	W <sub>3</sub>	W <sub>4</sub>	W <sub>5</sub>

LINE DIAGRAM SHOWING LOCATION OF WALE SPLICES - WING W<sub>1</sub>

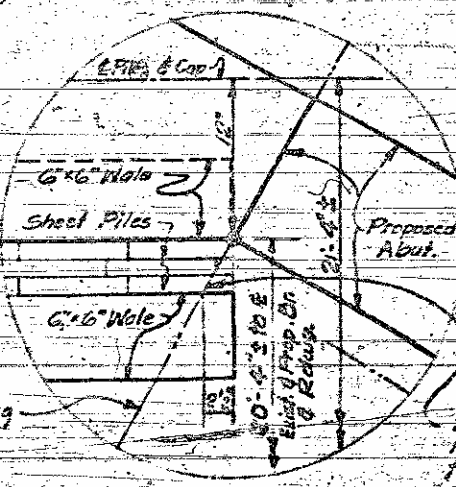
End of Cap	W <sub>1</sub>	W <sub>2</sub>
Front & Back Bat. Wales	W <sub>1</sub>	W <sub>2</sub>

LINE DIAGRAM SHOWING LOCATION OF WALE SPLICES - WING W<sub>2</sub>

SECTION B-B

SECTION D-D SHOWING BOLT CONNECTION WITH SPLICE

SECTION D-D SHOWING NO SPLICE



DETAIL 'A'

NOTE: Bottom portion of sheet pile adjacent to abutment to be cut on level as shown in order that it may be driven against abutment footing. This cut portion to be treated in accordance with the Specifications. The top 1/2" of the sheet pile not to be beveled.

Table with columns for various measurements and calculations, including 'SHEET PILES' and 'WALING'.

Table with columns for 'WING W<sub>1</sub>' and 'WING W<sub>2</sub>' detailing pile counts and dimensions.

Table with columns for 'WING W<sub>1</sub>' and 'WING W<sub>2</sub>' detailing waling materials like 'LALUM' and 'Delta'.

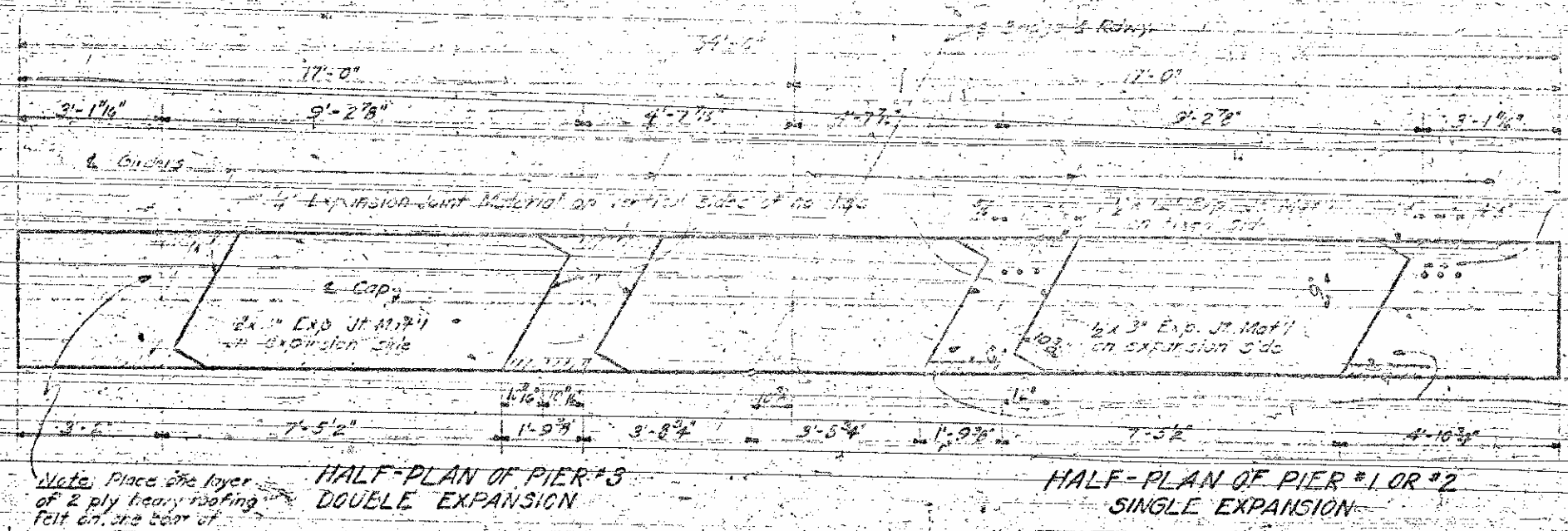
PROJECT NO. 9353  
COLUMBUS COUNTY  
STATION 5+32

STATE OF NORTH CAROLINA  
STATE HIGHWAY  
PUBLIC WORKS COMMISSION

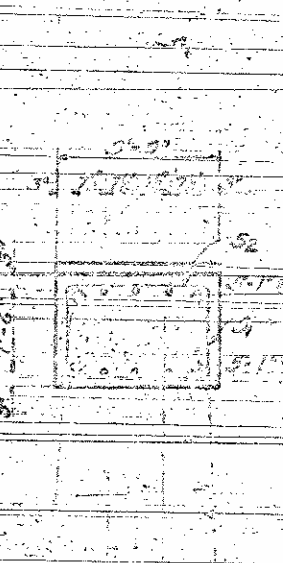
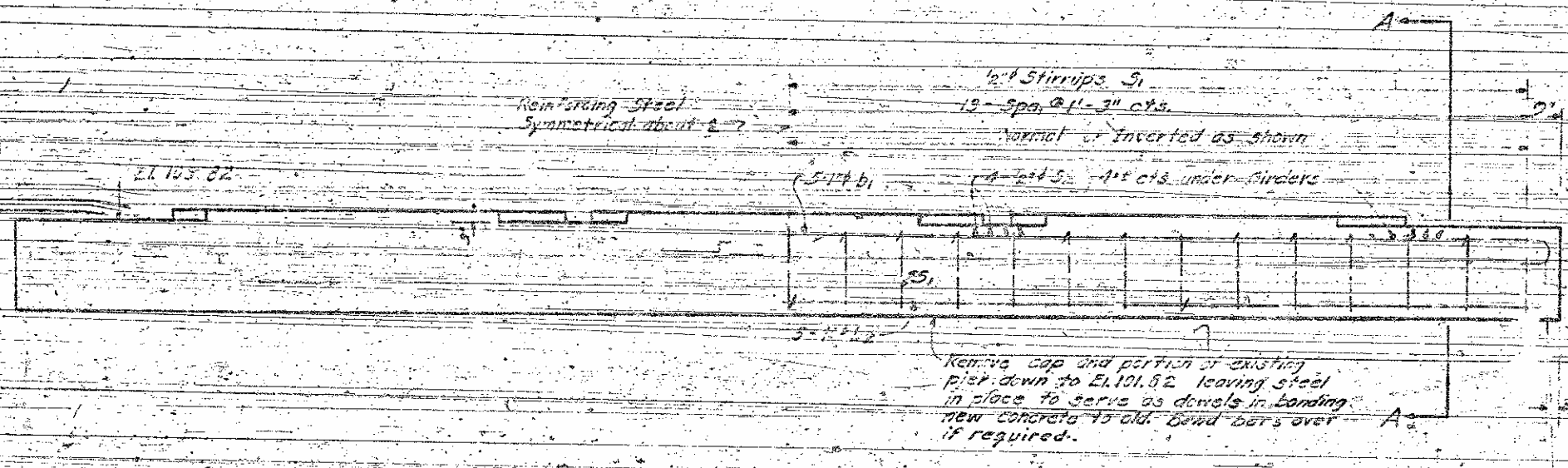
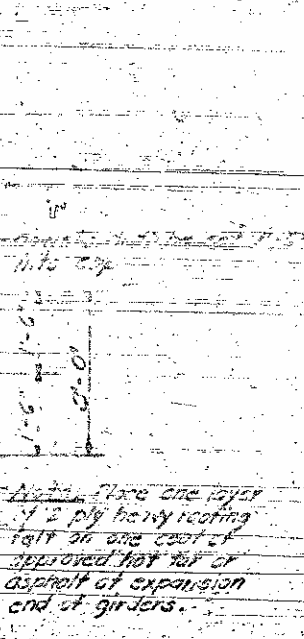
WINGS W<sub>1</sub> & W<sub>2</sub>  
ABUTMENTS A & B

MAY 1950

SPECIAL  
DESIGNED BY  
CHECKED BY  
DATE



**HALF-PLAN OF PIER #1 OR #2  
SINGLE EXPANSION**



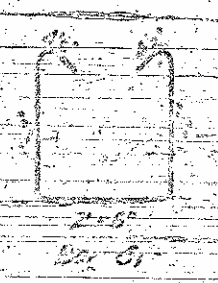
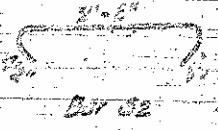
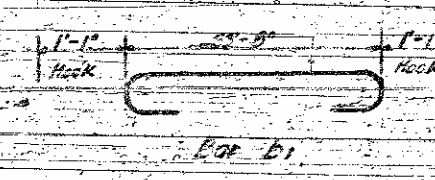
Note: Place one layer of 2 ply heavy roofing felt on one side of approved hot bit or asphalt at expansion end of girders.

REMOVE EXISTING EXPANSION JOINT (REMOVE EXISTING JOINT MATERIAL)

PROJECT NO. 1153  
 COLUMBUS COUNTY  
 STATION 17+00

**BILL OF MATERIAL FOR PIER #1, #2, OR #3**

Item No.	Size	Length	Weight
1	5	12	28.10
2	5	12	28.10
3	1/2"	12	1.10
4	1/2"	12	1.10
5	27	11.50	128
6	11	11.50	47
7	11	11.50	47
8	11	11.50	47
9	11	11.50	47
10	11	11.50	47
11	11	11.50	47
12	11	11.50	47
13	11	11.50	47
14	11	11.50	47
15	11	11.50	47
16	11	11.50	47
17	11	11.50	47
18	11	11.50	47
19	11	11.50	47
20	11	11.50	47
21	11	11.50	47
22	11	11.50	47
23	11	11.50	47
24	11	11.50	47
25	11	11.50	47
26	11	11.50	47
27	11	11.50	47
28	11	11.50	47
29	11	11.50	47
30	11	11.50	47
31	11	11.50	47
32	11	11.50	47
33	11	11.50	47
34	11	11.50	47
35	11	11.50	47
36	11	11.50	47
37	11	11.50	47
38	11	11.50	47
39	11	11.50	47
40	11	11.50	47
41	11	11.50	47
42	11	11.50	47
43	11	11.50	47
44	11	11.50	47
45	11	11.50	47
46	11	11.50	47
47	11	11.50	47
48	11	11.50	47
49	11	11.50	47
50	11	11.50	47
51	11	11.50	47
52	11	11.50	47
53	11	11.50	47
54	11	11.50	47
55	11	11.50	47
56	11	11.50	47
57	11	11.50	47
58	11	11.50	47
59	11	11.50	47
60	11	11.50	47
61	11	11.50	47
62	11	11.50	47
63	11	11.50	47
64	11	11.50	47
65	11	11.50	47
66	11	11.50	47
67	11	11.50	47
68	11	11.50	47
69	11	11.50	47
70	11	11.50	47
71	11	11.50	47
72	11	11.50	47
73	11	11.50	47
74	11	11.50	47
75	11	11.50	47
76	11	11.50	47
77	11	11.50	47
78	11	11.50	47
79	11	11.50	47
80	11	11.50	47
81	11	11.50	47
82	11	11.50	47
83	11	11.50	47
84	11	11.50	47
85	11	11.50	47
86	11	11.50	47
87	11	11.50	47
88	11	11.50	47
89	11	11.50	47
90	11	11.50	47
91	11	11.50	47
92	11	11.50	47
93	11	11.50	47
94	11	11.50	47
95	11	11.50	47
96	11	11.50	47
97	11	11.50	47
98	11	11.50	47
99	11	11.50	47
100	11	11.50	47



STATE OF NORTH CAROLINA  
 STATE HIGHWAY AND  
 PUBLIC WORKS COMMISSION

PIERS #1, #2, & #3

MAY, 1957

DESIGNED BY: [Signature]  
 CHECKED BY: [Signature]  
 DATE: [Date]