

STATE OF NORTH CAROLINA  
DIVISION OF HIGHWAYS

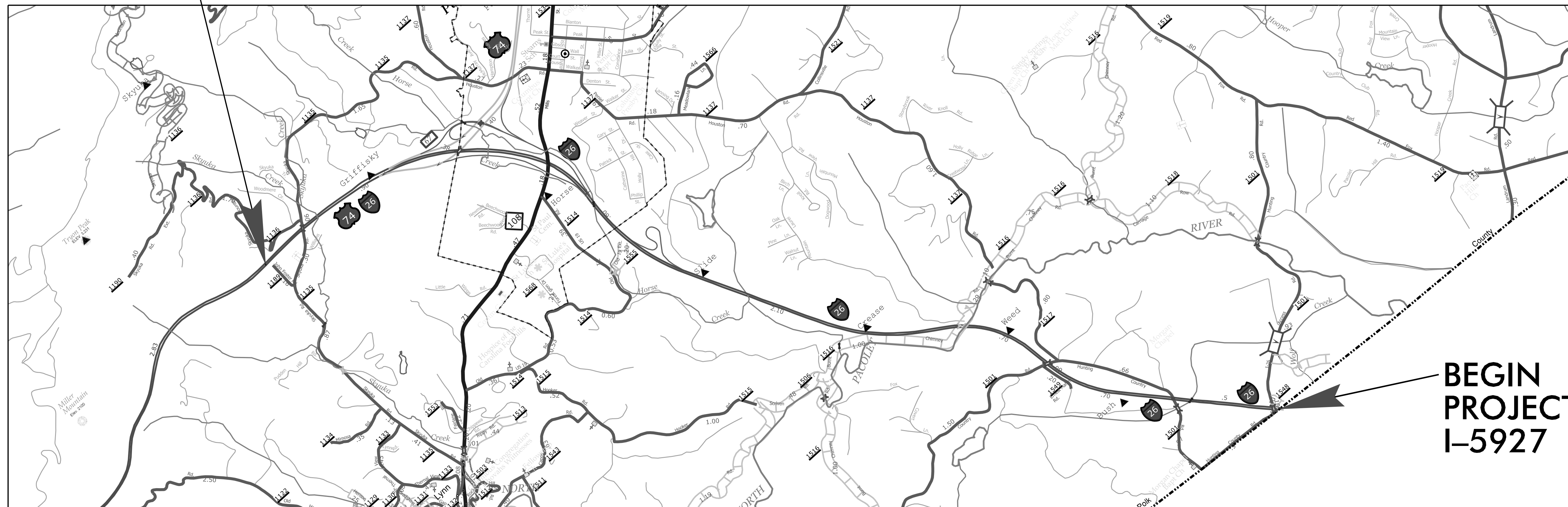
POLK COUNTY

LOCATION: *I-26 FROM THE SOUTH CAROLINA STATE LINE  
TO EAST OF US 74*

TYPE OF WORK: *BRIDGE PRESERVATION, GUARDRAIL,  
AND RESURFACING*

STATE	STATE PROJECT REFERENCE NO.	SHEET NO.	TOTAL SHEETS
N.C.	I-5927	1	
STATE PROJ. NO.	F. A. PROJ. NO.	DESCRIPTION	
45936.1.1	0026026	P.E.	
45936.3.1	0026026	CONSTRUCTION	

END  
PROJECT  
I-5927



BEGIN  
PROJECT  
I-5927

GRAPHIC SCALES

NOT TO SCALE

DESIGN DATA

PROJECT LENGTH

LENGTH ROADWAY TIP PROJECT I-5927 = 5.929 MILES

LENGTH STRUCTURE TIP PROJECT I-5927 = 0.173 MILES

TOTAL LENGTH TIP PROJECT I-5927 = 6.102 MILES

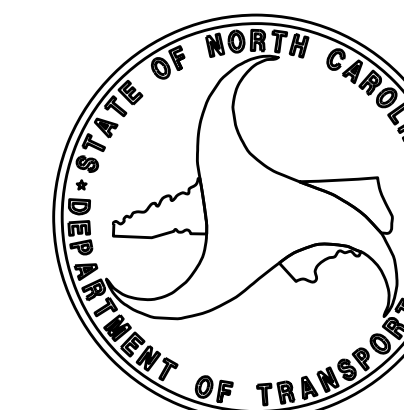
Prepared in the Office of:  
**DIVISION OF HIGHWAYS**  
253 WEBSTER RD., SYLVA NC, 28779

2018 STANDARD SPECIFICATIONS

RIGHT OF WAY DATE:  
N/A

JONATHAN WOODARD, PE  
PROJECT ENGINEER

LETTING DATE:  
MARCH 21, 2023



CONTRACT: C204784 TIP PROJECT: I-5927

09/08/09

STATE	STATE PROJECT REFERENCE NO.	SHEET NO.	TOTAL SHEETS
N.C.	I-5927	1A	

TIP PROJECT: I-5927

CONTRACT: C204784

INDEX OF SHEETS

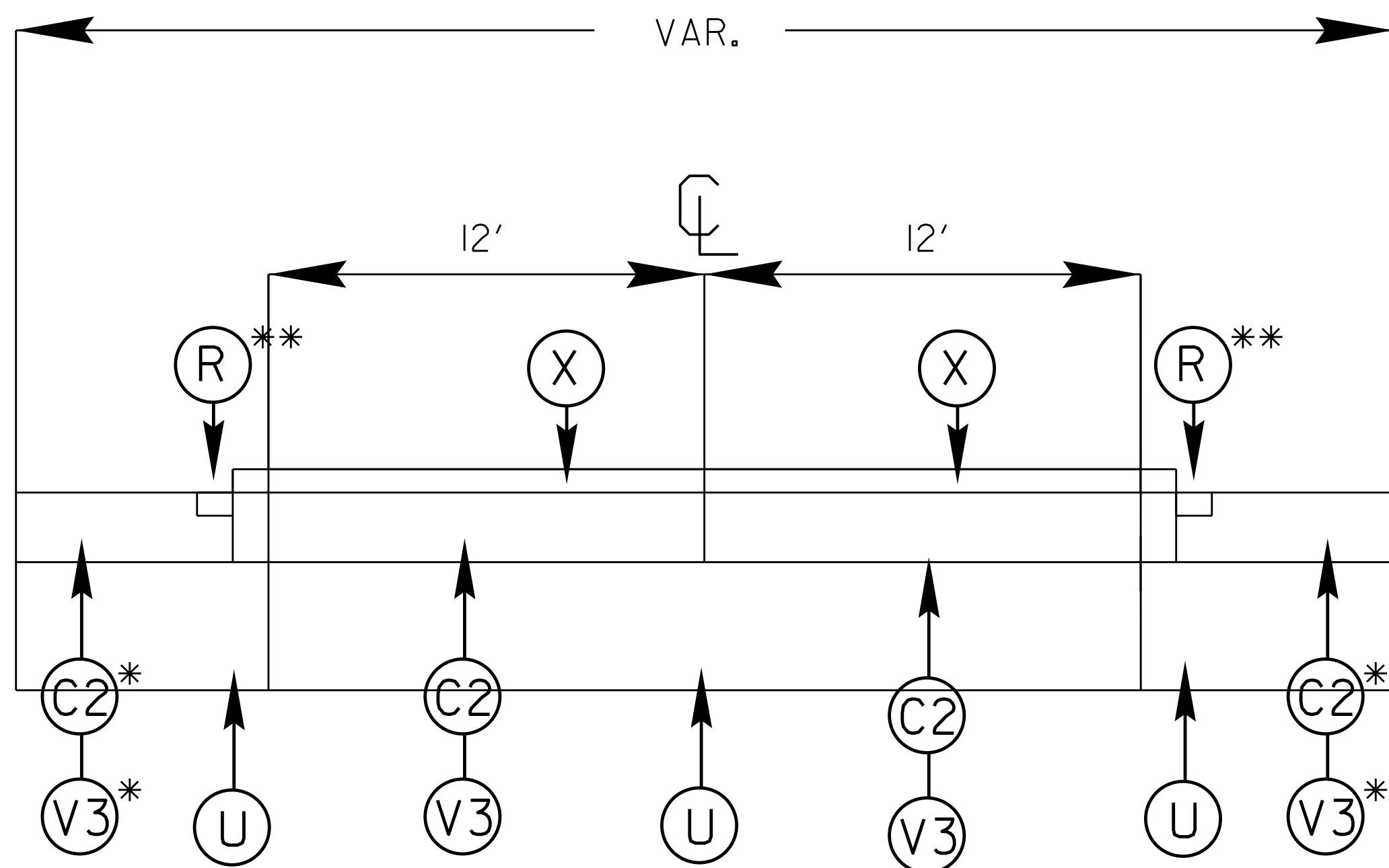
SHEET NUMBER	SHEET
1	TITLE SHEET
1A	INDEX OF SHEETS AND STANDARD DRAWINGS
2A-1 THRU 2A-2	PAVEMENT SCHEDULE AND TYPICAL SECTIONS
2B-1 THRU 2B-3	ROADWAY DETAILS
3B-1 THRU 3B-3	ROADWAY SUMMARIES
3D-1 THRU 3D-3	DRAINAGE SUMMARIES
4 THRU 10	RESURFACING MAPS
TMP-1 THRU TMP-12	TRAFFIC MANAGEMENT PLANS
S-1 THRU S-79	STRUCTURE PLANS

2018 ROADWAY ENGLISH STANDARD DRAWINGS

The following Roadway Standards as appear in "Roadway Standard Drawings" Highway Design Branch - N. C. Department of Transportation - Raleigh, N. C., Dated January, 2018 are applicable to this project and by reference hereby are considered a part of these plans:

STD.NO.	TITLE
DIVISION 6 - ASPHALT BASES AND PAVEMENTS	
665.01	Asphalt Shoulders - Milled Rumble Strips
DIVISION 8 - INCIDENTALS	
840.20	Frames and Wide Slot Flat Grates
862.01	Guardrail Placement
862.02	Guardrail Installation
862.03	Structure Anchor Units
862.04	Anchoring End of Guardrail - B-77 and B-83 Anchor Units
DIVISION 11 - WORK ZONE TRAFFIC CONTROL	
1101.01	Work Zone Advance Warning Signs
1101.02	Temporary Lane Closures
1101.04	Temporary Shoulder Closures
1101.11	Traffic Control Design Tables
1110.01	Stationary Work Zone Signs
1110.02	Portable Work Zones Signs
1115.01	Flashing Arrow Boards
1130.01	Drum
1135.01	Cones
1150.01	Flagging Devices
1165.01	Truck Mounted Attenuator - Delineation
1180.01	Skinny Drum
DIVISION 12 - PAVEMENT MARKINGS, MARKERS AND DELINEATION	
1205.01	Pavement Markings - Line Types and Offsets
1205.02	Pavement Markings - Divided and Undivided Roadways
1205.03	Pavement Markings - Interchanges
1205.05	Pavement Markings - Turn Lanes
1205.06	Pavement Markings - Thru Lane Drops
1205.08	Pavement Markings - Symbols and Work Messages
1205.12	Pavement Markings - Bridges
1250.01	Pavement Marker Spacing
1253.01	Snowplowable Raised Pavement Markers
1261.01	Guardrail and Barrier Delineation Spacing
1261.02	Guardrail and Barrier Delineation Types
1262.01	Guardrail End Delineation

# TYPICAL 1



\* USE IN AREAS WHERE SHOULDERS HAVE EXISTING OGFC OR AS DIRECTED BY PROJECT ENGINEER

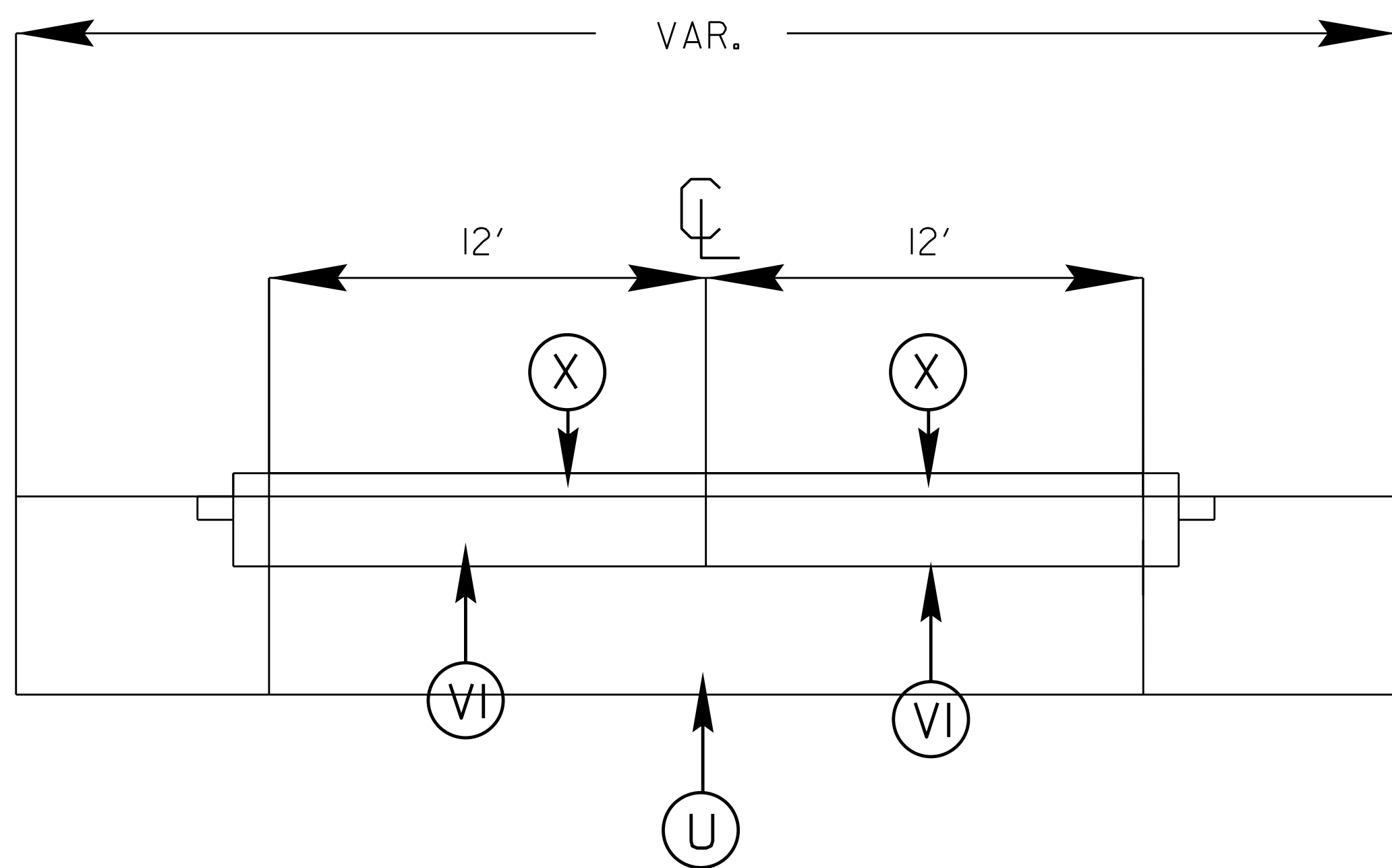
\*\* USE IN AREAS WHERE RUMBLE STRIPS WERE REMOVED OR AS DIRECTED BY PROJECT ENGINEER

\* NOTE\* QUANTITIES INCLUDE ACCELERATION/DECELERATION LANES.

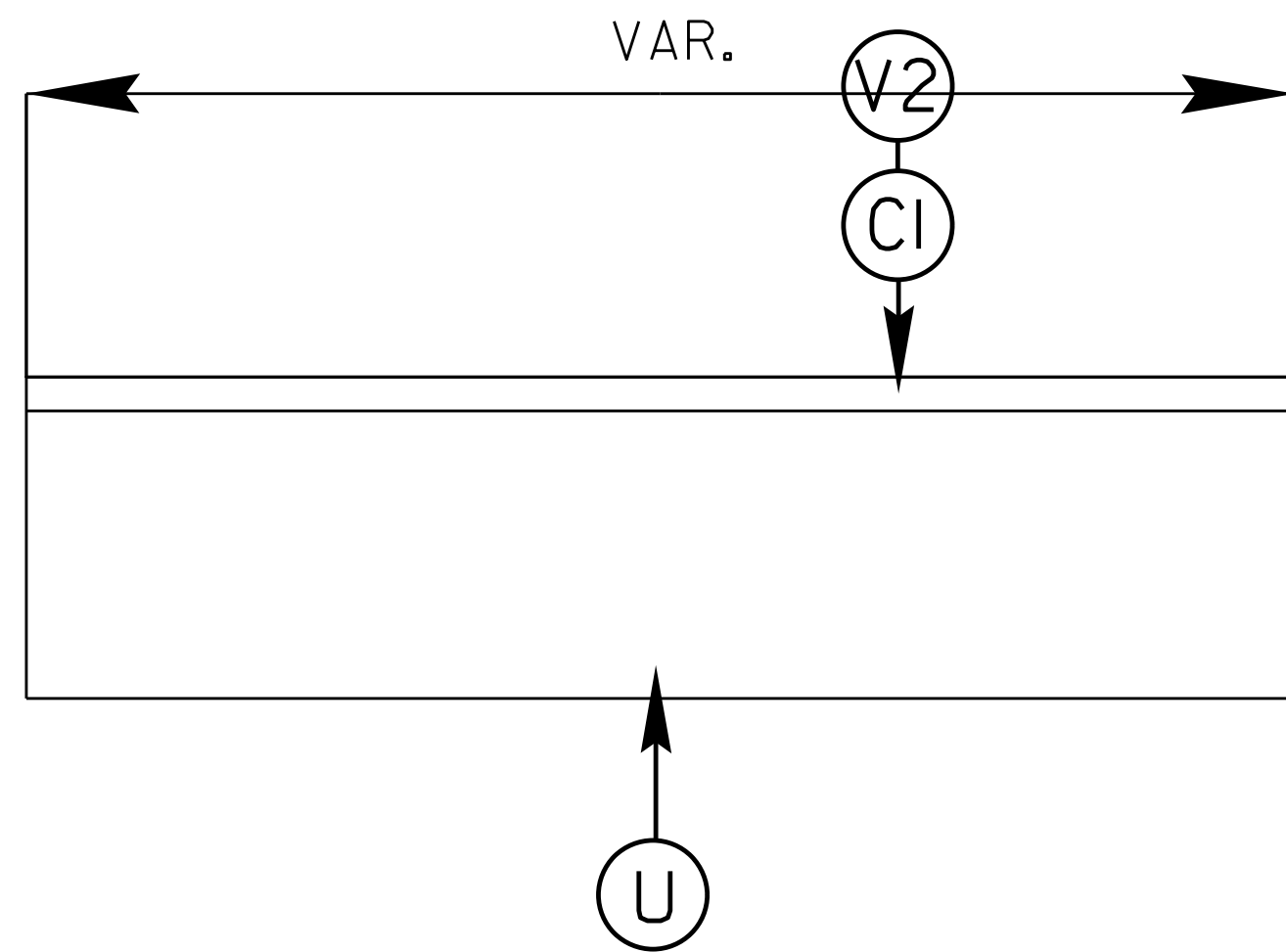
## SURFACING SCHEDULE

ITEM NO	DESCRIPTION
C1	PROP. APPROX. 1 1/2" ASPHALT CONCRETE SURFACE COURSE, TYPE S9.5C AT AN AVERAGE RATE OF 168 LBS.PER.SQ.YD
C2	PROP. APPROX. 1 1/2" ASPHALT CONCRETE SURFACE COURSE, TYPE S9.5D AT AN AVERAGE RATE OF 168 LBS.PER.SQ.YD
V1	MILLED ASPHALT PAVEMENT 3/4" IN DEPTH IN LOCATIONS AS DIRECTED BY PROJECT ENGINEER
V2	MILLED ASPHALT PAVEMENT 1 1/2" IN DEPTH IN LOCATIONS AS DIRECTED BY PROJECT ENGINEER
V3	MILLED ASPHALT PAVEMENT 2-1/4" IN DEPTH IN LOCATIONS AS DIRECTED BY PROJECT ENGINEER
R	MILLED RUMBLE STRIPS AS DIRECTED BY PROJECT ENGINEER
U	EXISTING ASPHALT
X	PROP. APPROX. 3/4" OPEN GRADE FRICTION COURSE TYPE FC1 MOD AT AN AVERAGE RATE OF 90 LBS PER SQ. YD.

# TYPICAL 2



### TYPICAL 3



\* USE IN AREAS WHERE SHOULDERS HAVE EXISTING OGFC OR AS DIRECTED BY PROJECT ENGINEER

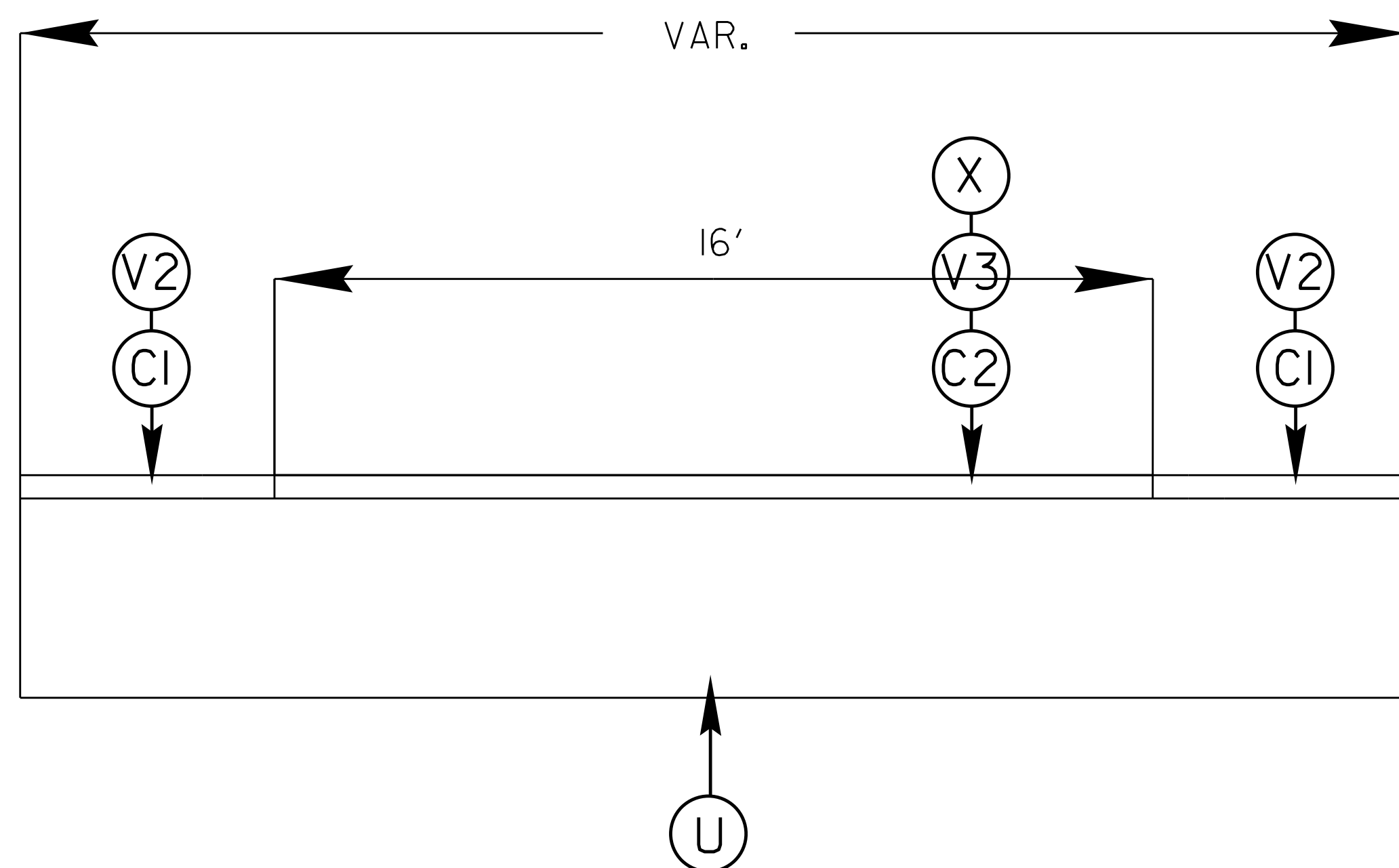
\*\* USE IN AREAS WHERE RUMBLE STRIPS WERE REMOVED OR AS DIRECTED BY PROJECT ENGINEER

\* NOTE\* QUANTITIES INCLUDE ACCELERATION/DECELERATION LANES.

### SURFACING SCHEDULE

ITEM NO	DESCRIPTION
C1	PROP. APPROX. 1 1/2" ASPHALT CONCRETE SURFACE COURSE, TYPE S9.5C AT AN AVERAGE RATE OF 168 LBS.PER.SQ.YD
C2	PROP. APPROX. 1 1/2" ASPHALT CONCRETE SURFACE COURSE, TYPE S9.5D AT AN AVERAGE RATE OF 168 LBS.PER.SQ.YD
V1	MILLED ASPHALT PAVEMENT 3/4" IN DEPTH IN LOCATIONS AS DIRECTED BY PROJECT ENGINEER
V2	MILLED ASPHALT PAVEMENT 1 1/2" IN DEPTH IN LOCATIONS AS DIRECTED BY PROJECT ENGINEER
V3	MILLED ASPHALT PAVEMENT 2-1/4" IN DEPTH IN LOCATIONS AS DIRECTED BY PROJECT ENGINEER
R	MILLED RUMBLE STRIPS AS DIRECTED BY PROJECT ENGINEER
U	EXISTING ASPHALT
X	PROP. APPROX. 3/4" OPEN GRADE FRICTION COURSE TYPE FC1 MOD AT AN AVERAGE RATE OF 90 LBS PER SQ. YD.

### TYPICAL 4





I4-DEC-2017 10:36  
 S:\Contracts\2018\Standard Drawings\Special Details\Drawings\Division 8\0862d0301.dgn  
 Jhowerton AT CSU-212855

STATE OF  
NORTH CAROLINA  
DEPT. OF TRANSPORTATION  
DIVISION OF HIGHWAYS  
RALEIGH, N.C.

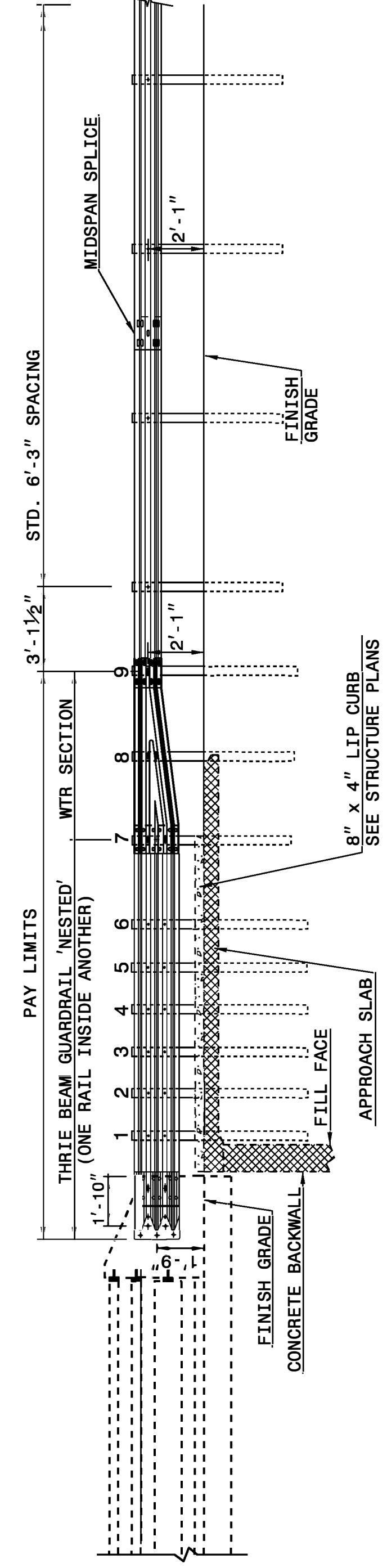
ROADWAY DETAIL DRAWING FOR  
**STRUCTURE ANCHOR UNITS**  
GUARDRAIL ANCHOR UNIT, TYPE III  
FOR ATTACHMENT TO RAIL ON BRIDGE

SHEET 1 OF 7  
**862D03**

STATE OF  
NORTH CAROLINA  
DEPT. OF TRANSPORTATION  
DIVISION OF HIGHWAYS  
RALEIGH, N.C.

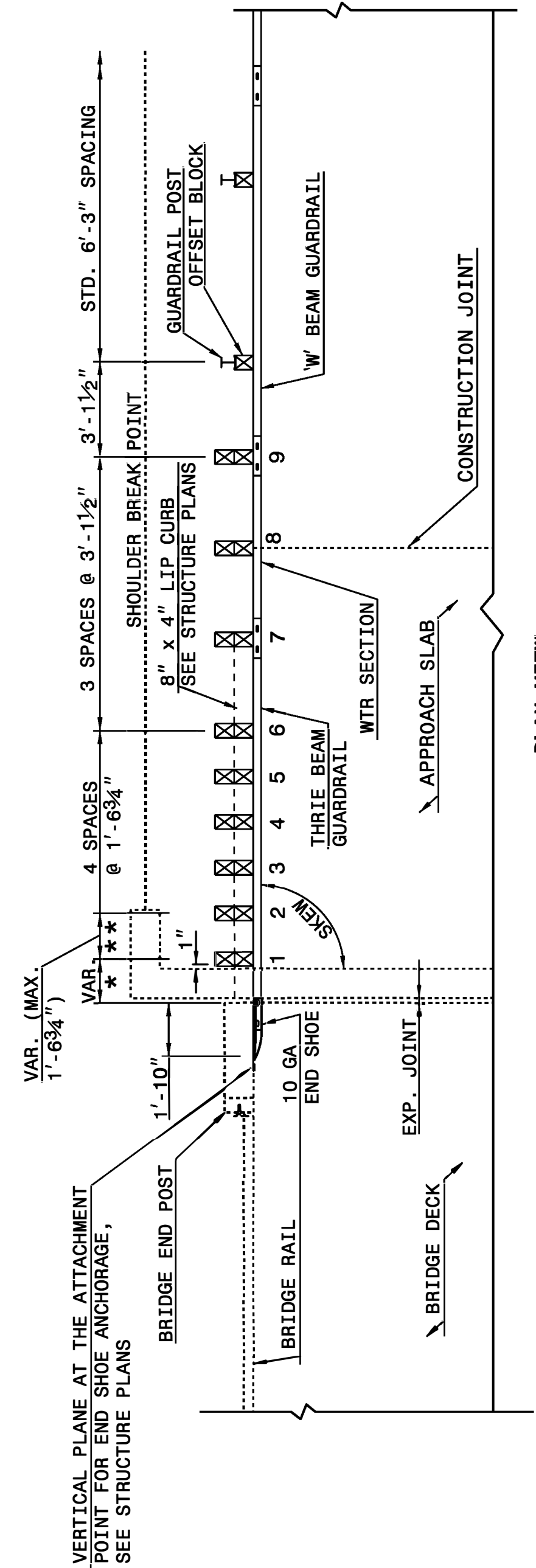
ROADWAY DETAIL DRAWING FOR  
**STRUCTURE ANCHOR UNITS**  
GUARDRAIL ANCHOR UNIT, TYPE III  
FOR ATTACHMENT TO RAIL ON BRIDGE

SHEET 1 OF 7  
**862D03**



**ELEVATION**

NOTE:  
 \*\*POST NOT REQUIRED FOR SKEW ANGLES GREATER THAN 150° OR LESS THAN 30° UNLESS OTHERWISE DIRECTED BY THE ENGINEER.  
 \*THE DISTANCE FROM END OF BRIDGE RAIL TO CENTER LINE OF THE FIRST POST SHOULD BE 11½" IF CONCRETE BACKWALL IS NOT PRESENT.  
 -SHOULDER BERM GUTTER MUST BE INSTALLED TO THE LIMITS 8" x 4" LIP CURB IS SHOWN IF ANCHOR UNIT IS NOT ADJACENT TO AN APPROACH SLAB.  
 -MEASURE GUARDRAIL HEIGHT FROM THE TOP OF ADJACENT SURFACE (SHOULDER, BERM, OR GUTTER).  
 -LAP JOINTS IN THE DIRECTION OF TRAFFIC FLOW.  
 -SEE SHEET 3 FOR POST SECTIONS 1 THRU 9.



**PLAN VIEW**

**GUARDRAIL ANCHOR UNIT, TYPE III  
FOR ATTACHMENT TO RAIL ON BRIDGE**

STATE OF  
NORTH CAROLINA  
DEPT. OF TRANSPORTATION  
DIVISION OF HIGHWAYS  
RALEIGH, N.C.

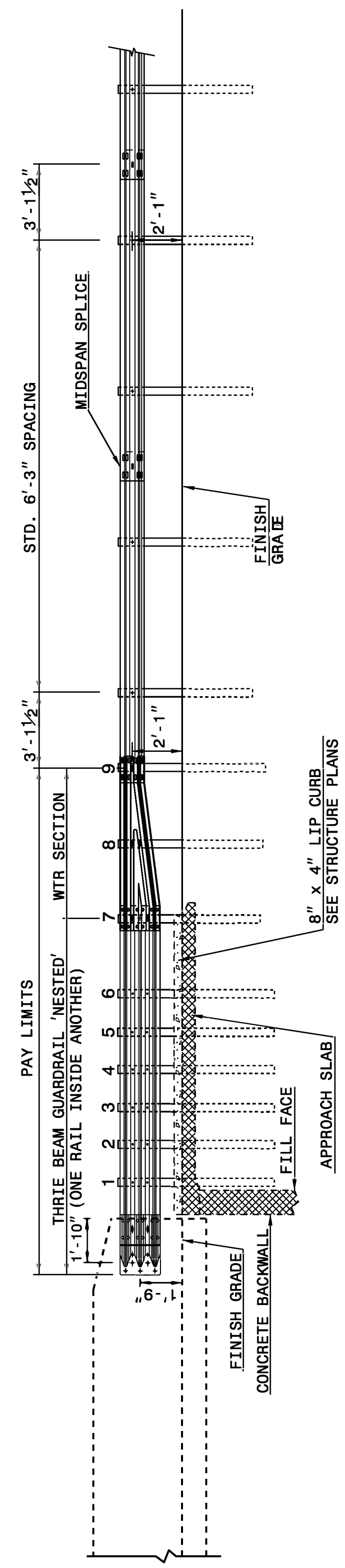
ROADWAY DETAIL DRAWING FOR  
**STRUCTURE ANCHOR UNITS**  
GUARDRAIL ANCHOR UNIT, TYPE III FOR ATTACHMENT TO  
RAIL ON BRIDGE - SUB REGIONAL TIER

SHEET 2 OF 7  
**862D03**

STATE OF  
NORTH CAROLINA  
DEPT. OF TRANSPORTATION  
DIVISION OF HIGHWAYS  
RALEIGH, N.C.

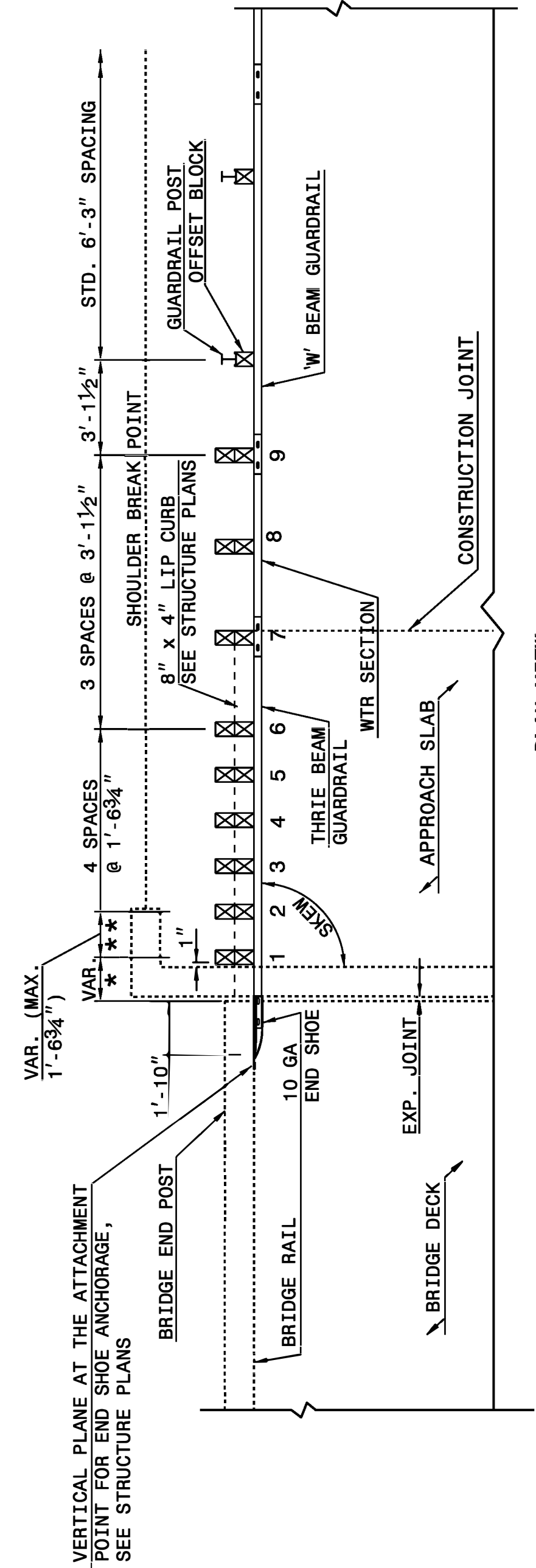
ROADWAY DETAIL DRAWING FOR  
**STRUCTURE ANCHOR UNITS**  
GUARDRAIL ANCHOR UNIT, TYPE III FOR ATTACHMENT TO  
RAIL ON BRIDGE - SUB REGIONAL TIER

SHEET 2 OF 7  
**862D03**



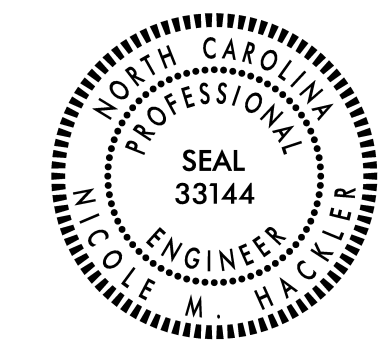
**ELEVATION**

NOTE:  
 \*\*POST NOT REQUIRED FOR SKEW ANGLES GREATER THAN 150° OR LESS THAN 30° UNLESS OTHERWISE DIRECTED BY THE ENGINEER.  
 \*THE DISTANCE FROM END OF BRIDGE RAIL TO CENTER LINE OF THE FIRST POST SHOULD BE 11½" IF CONCRETE BACKWALL IS NOT PRESENT.  
 -SHOULDER BERM GUTTER MUST BE INSTALLED TO THE LIMITS 8" x 4" LIP CURB IS SHOWN IF ANCHOR UNIT IS NOT ADJACENT TO AN APPROACH SLAB.  
 -MEASURE GUARDRAIL HEIGHT FROM THE TOP OF ADJACENT SURFACE (SHOULDER, BERM, OR GUTTER).  
 -LAP JOINTS IN THE DIRECTION OF TRAFFIC FLOW.  
 -SEE SHEET 3 FOR POST SECTIONS 1 THRU 9.



**PLAN VIEW**

**GUARDRAIL ANCHOR UNIT, TYPE III FOR ATTACHMENT TO  
RAIL ON BRIDGE - SUB REGIONAL TIER**



DOCUMENT NOT CONSIDERED FINAL  
UNLESS ALL SIGNATURES COMPLETED

**CONTRACT STANDARDS  
AND DEVELOPMENT UNIT**  
Office 919-707-6950 FAX 919-250-4119

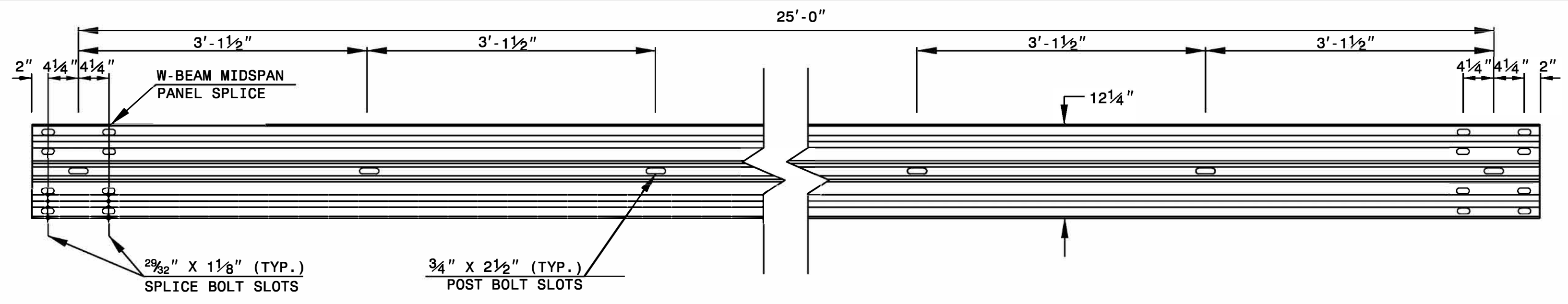
**SEE TITLE BLOCK**

ORIGINAL BY: J. HOWERTON DATE: 06-22-12  
 MODIFIED BY: DATE:  
 CHECKED BY: DATE:  
 FILE SPEC.:

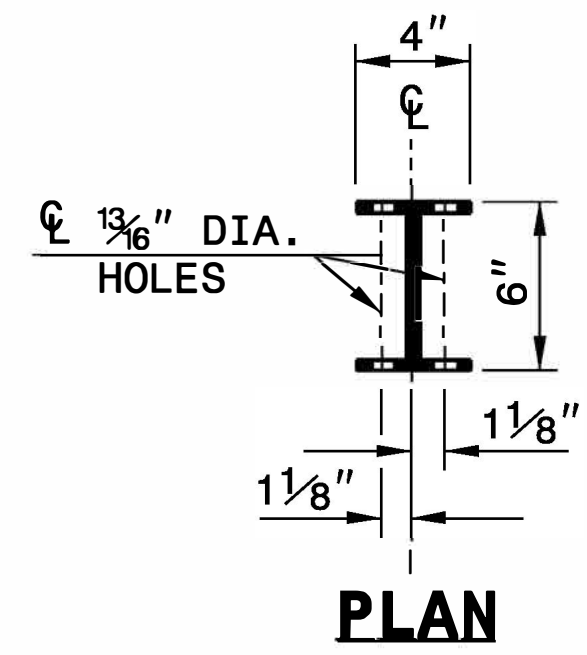
STATE OF NORTH CAROLINA  
DEPT. OF TRANSPORTATION  
DIVISION OF HIGHWAYS  
RALEIGH, N.C.

ROADWAY DETAIL DRAWING FOR  
**GUARDRAIL INSTALLATION**

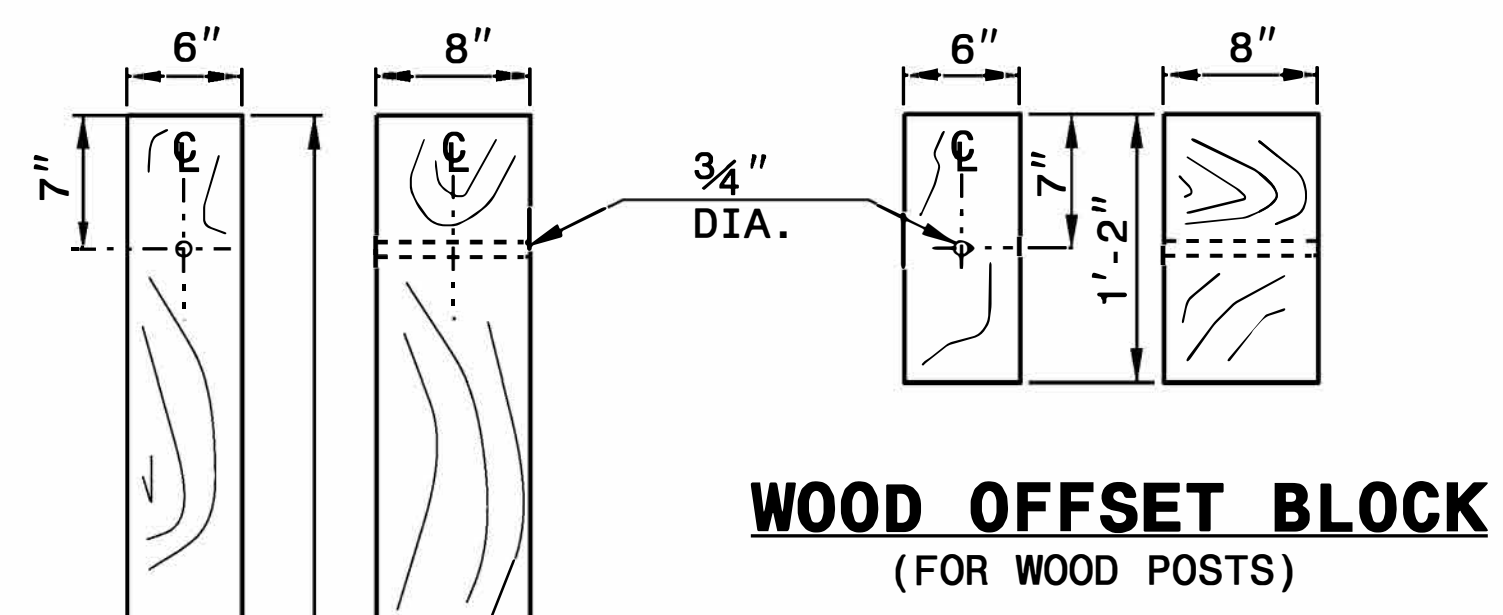
SHEET 6 OF 8  
**862D02**



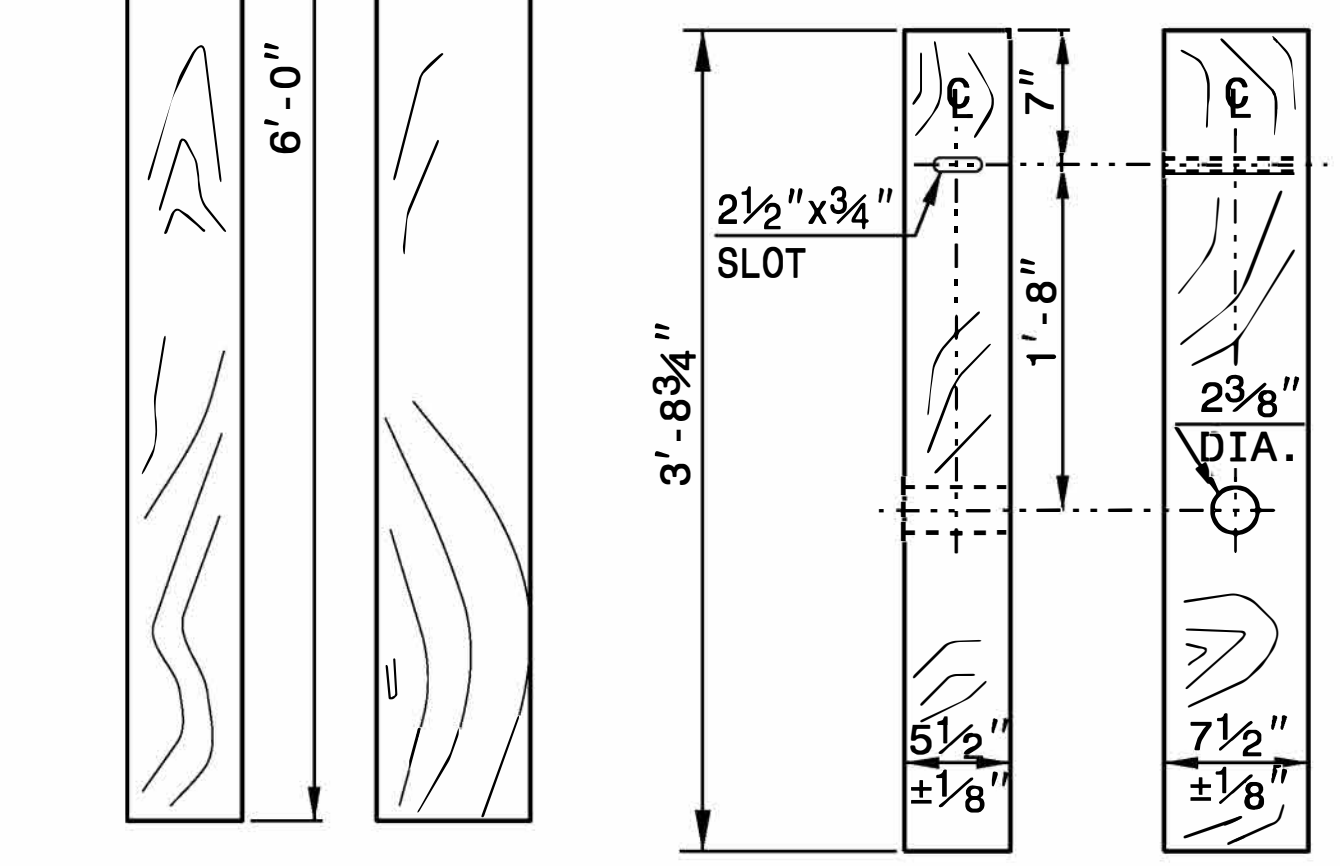
**STANDARD W-BEAM GUARDRAIL**



**PLAN**

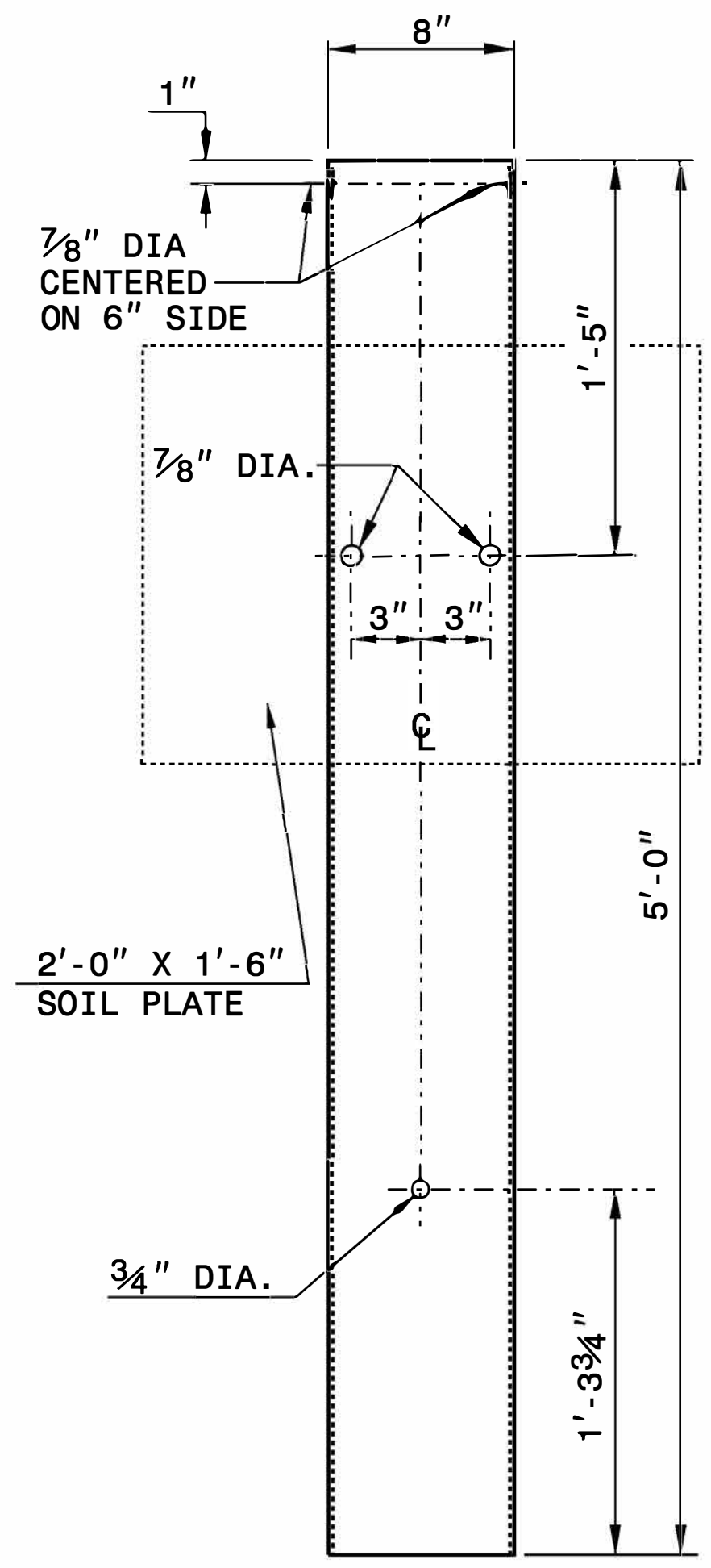


**WOOD OFFSET BLOCK  
(FOR WOOD POSTS)**

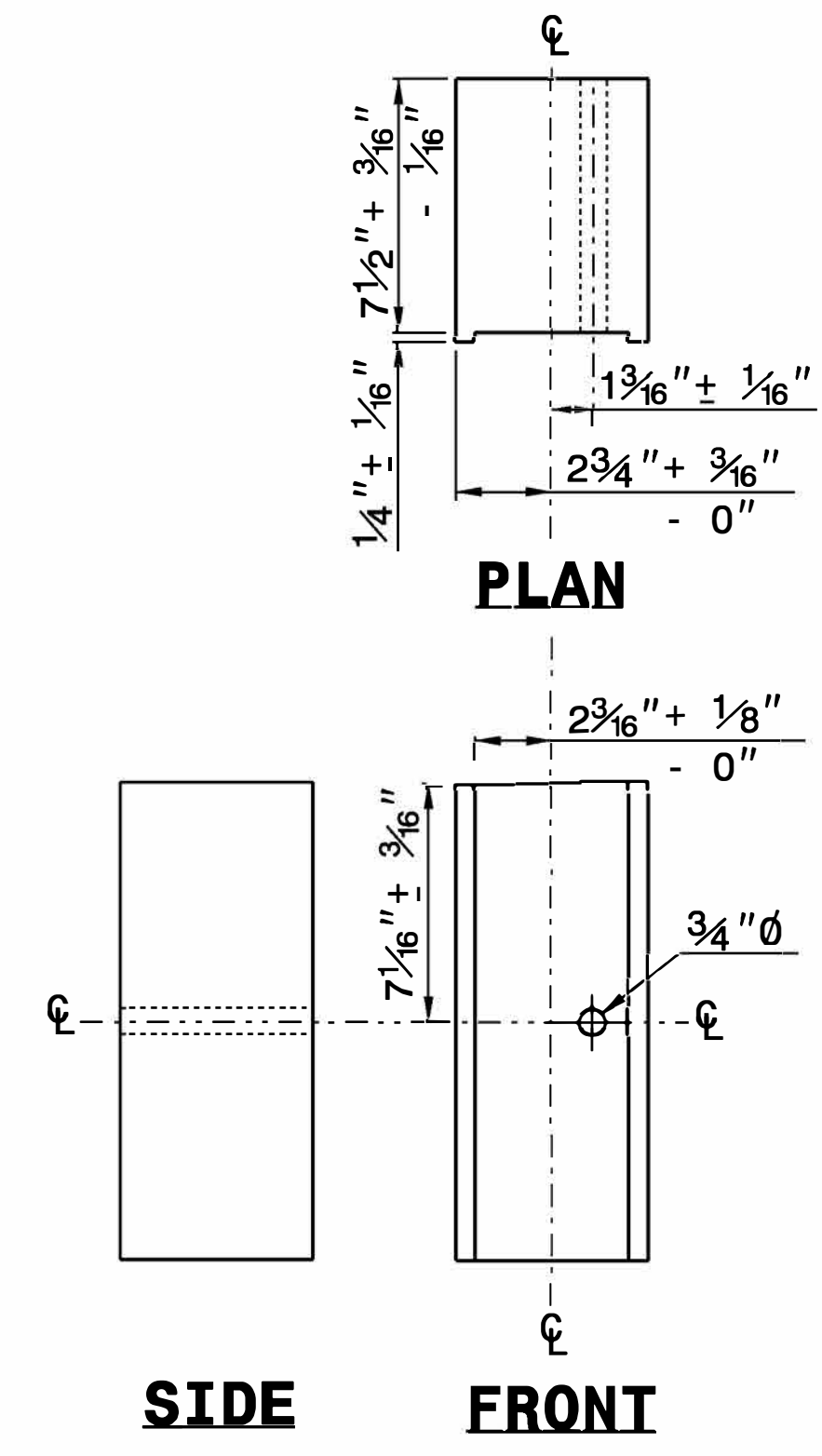


**STANDARD  
LINE POST**

**SHORT WOOD  
BREAKAWAY POST**



**STEEL TUBE  
TS 6"x8"x0.1875"**

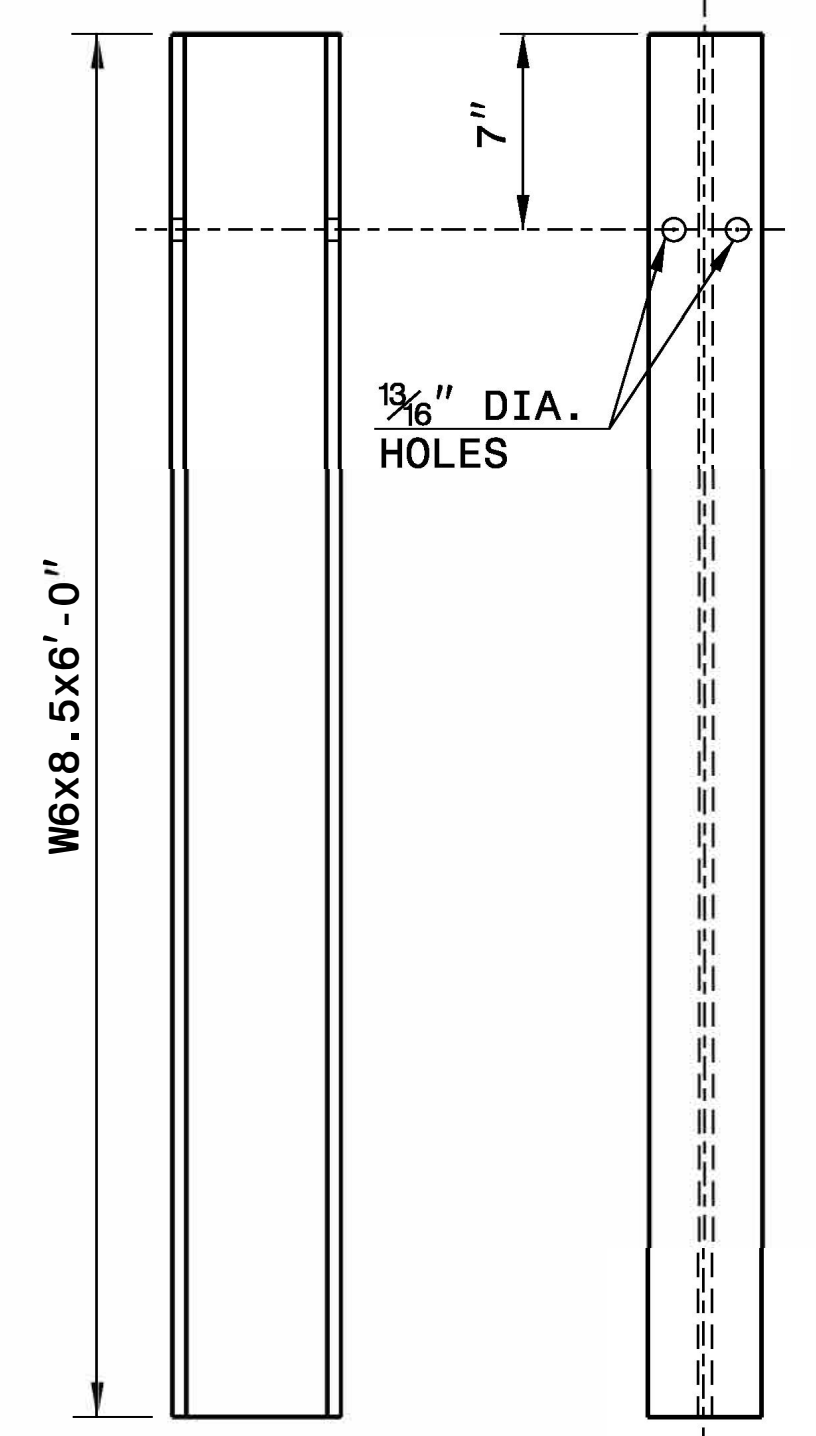


**PLAN**

**SIDE**

**FRONT**

**ROUTED  
OFFSET BLOCK**



**SIDE**

**FRONT**

**"W6" STEEL POST**

STATE OF NORTH CAROLINA  
DEPT. OF TRANSPORTATION  
DIVISION OF HIGHWAYS  
RALEIGH, N.C.

ROADWAY DETAIL DRAWING FOR  
**GUARDRAIL INSTALLATION**

SHEET 6 OF 8  
**862D02**



**CONTRACTS STANDARDS  
AND DEVELOPMENT UNIT**  
Office 919-707-6950 FAX 919-250-4119

**SEE TITLE BLOCK**

ORIGINAL BY: J. HOWERTON DATE: 3-7-2018  
MODIFIED BY: DATE: \_\_\_\_\_  
CHECKED BY: DATE: \_\_\_\_\_  
FILE SPEC.: \_\_\_\_\_





PROJECT NO.	SHEET NO.	TOTAL NO.
I-5927	38-2	

**SUMMARY OF QUANTITIES**

PROJECT NO	COUNTY	MAP NO	ROUTE	DESCRIPTION	TYP NO	LANES	LANE TYPE	FINAL SURFACE TREATMENT REQUIRED	WARM MIX ASPHALT REQUIRED	LENGTH	WIDTH	PIPE CLEAN OUT	1297000000-E			SURFACE COURSE, S9.5C	SURFACE COURSE, S9.5D	ASPHALT BINDER FOR PLANT MIX	POLYMER MODIFIED ASPHALT BINDER FOR PLANT MIX	OPEN-GRADED ASPHALT FRICTION COURSE, TYPE FC-1 MODIFIED	PATCHING EXISTING PAVEMENT	MILLED RUMBLE STRIPS (ASPHALT CEMENT CONCRETE)	FRAME WITH TWO GRATES, STD 840.20	4" CONCRETE PAVED DITCH	ADJ. OF DROP INLET	STEEL BEAM GUARDRAIL	STEEL BEAM GUARDRAIL, DOUBLE FACED	ADDITIONAL GUARDRAIL POSTS	GUARDRAIL END UNITS, TYPE CAT-1	GUARDRAIL ANCHOR UNITS, TYPE III	GUARDRAIL END UNITS, TYPE TL-3	GUARDRAIL ANCHOR UNITS, TYPE B-77	REMOVE EXISTING GUARDRAIL				
													EA	SY	SY																			TONS	TONS	TONS	TONS
C204784	Polk	1	I-26 WEST	FROM SC SL TO MP 67.007	1	2	MD	NO	NO	4.095	26	1	77,854		6,671		665	3,574	1,074		1	73		8,546	11,947	2	9	3	9	5	21,170						
<b>TOTAL FOR MAP NO. 1</b>										<b>4.095</b>		<b>1</b>	<b>77,854</b>		<b>6,671</b>		<b>665</b>	<b>3,574</b>	<b>1,074</b>		<b>1</b>	<b>73</b>		<b>8,546</b>	<b>11,947</b>	<b>2</b>	<b>9</b>	<b>3</b>	<b>9</b>	<b>5</b>	<b>21,170</b>						
C204784	Polk	2	I-26 WEST	MP 67.007 TO 66.632	2	2	MD	NO	NO	0.645	26		11,238				35	529						8,546	11,947	2	9	3	9	5	21,170						
<b>TOTAL FOR MAP NO. 2</b>										<b>0.645</b>			<b>11,238</b>				<b>35</b>	<b>529</b>							<b>8,546</b>	<b>11,947</b>	<b>2</b>	<b>9</b>	<b>3</b>	<b>9</b>	<b>5</b>	<b>21,170</b>					
C204784	Polk	3	I-26 WEST	MP 66.362 TO 65	1	2	MD	NO	NO	1.362	26		31,672		2,724		240	1,269						10,092	2,997		10		8		13,552						
<b>TOTAL FOR MAP NO. 3</b>										<b>1.362</b>			<b>31,672</b>		<b>2,724</b>		<b>240</b>	<b>1,269</b>					<b>10,092</b>	<b>2,997</b>		<b>10</b>		<b>8</b>		<b>13,552</b>							
C204784	Polk	4	I-26 EAST	FROM MP 65 TO MP 66.32	1	2	MD	NO	NO	1.32	26		27,709		2,374		220	1,272			3,353			9,881	312	1	4	3	3	10,368							
<b>TOTAL FOR MAP NO. 4</b>										<b>1.32</b>			<b>27,709</b>		<b>2,374</b>		<b>220</b>	<b>1,272</b>		<b>3,353</b>			<b>9,881</b>	<b>312</b>	<b>1</b>	<b>4</b>	<b>3</b>	<b>3</b>	<b>10,368</b>								
C204784	Polk	5	I-26 EAST	MP 66.32 TO 66.955	2	2	MD	NO	NO	0.635	26		11,065				35	484						9,881	312	1	4	3	3	10,368							
<b>TOTAL FOR MAP NO. 5</b>										<b>0.635</b>			<b>11,065</b>				<b>35</b>	<b>484</b>						<b>9,881</b>	<b>312</b>	<b>1</b>	<b>4</b>	<b>3</b>	<b>3</b>	<b>10,368</b>							
C204784	Polk	6	I-26 EAST	FROM MP 66.955 TO 71.058 (SC SL)	1	2	MD	NO	NO	4.103	29	4	72,672		6,226		650	3,335	1,199		2	135	1	21,963	9,003	2	11	3	8	4	31,582						
<b>TOTAL FOR MAP NO. 6</b>										<b>4.103</b>		<b>4</b>	<b>72,672</b>		<b>6,226</b>		<b>650</b>	<b>3,335</b>	<b>1,199</b>		<b>2</b>	<b>135</b>	<b>1</b>	<b>21,963</b>	<b>9,003</b>	<b>2</b>	<b>11</b>	<b>3</b>	<b>8</b>	<b>4</b>	<b>31,582</b>						
C204784	Polk	7	RAMP I-26 WEST	EXIT RAMP TO RSET AREA	3	1	MD	NO	NO	0.049	24						775	66																			
<b>TOTAL FOR MAP NO. 7</b>										<b>0.049</b>							<b>775</b>	<b>66</b>																			
C204784	Polk	8	RAMP I-26 WEST	ON RAMP FROM RSET AREA	3	1	MD	NO	NO	0.04	24						930	80																			
<b>TOTAL FOR MAP NO. 8</b>										<b>0.04</b>							<b>930</b>	<b>80</b>																			
C204784	Polk	9	RAMP I-26 WEST	EXIT RAMP EXIT 67	3	1	MD	NO	NO	0.238	24						3,840	329																			
<b>TOTAL FOR MAP NO. 9</b>										<b>0.238</b>							<b>3,840</b>	<b>329</b>																			
C204784	Polk	10	RAMP I-26 WEST	EXIT RAMP ONTO US 74	4	1	MD	NO	NO	0.113	30		1,094		1,168		194	46																			
<b>TOTAL FOR MAP NO. 10</b>										<b>0.113</b>			<b>1,094</b>		<b>1,168</b>		<b>194</b>	<b>46</b>																			
C204784	Polk	11	RAMP I-26 WEST	RAMP FROM US 74 ONTO I-26 WEST	1	2	MD	NO	NO	0.15	40						5,518	473						1,848													
<b>TOTAL FOR MAP NO. 11</b>										<b>0.15</b>							<b>5,518</b>	<b>473</b>					<b>1,848</b>														
C204784	Polk	12	RAMP I-26 EAST	EXIT 67 ON RAMP EAST FROM NC 108	3	1	MD	NO	NO	0.165	24						2,556	219																			
<b>TOTAL FOR MAP NO. 12</b>										<b>0.165</b>							<b>2,556</b>	<b>219</b>																			
C204784	Polk	13	RAMP I-26 EAST	EXIT RAMP FROM I-26 EAST TO US 74 EAST	1	2	MD	NO	NO	0.303	33		6,257				536	242						3,499													
<b>TOTAL FOR MAP NO. 13</b>										<b>0.303</b>			<b>6,257</b>				<b>536</b>	<b>242</b>					<b>3,499</b>														
<b>TOTAL FOR PROJ NO. C204784</b>										<b>13.218</b>		<b>5</b>	<b>217,258</b>	<b>22,303</b>	<b>14,787</b>		<b>694</b>	<b>19,198</b>	<b>48</b>	<b>1,950</b>	<b>10,943</b>	<b>2,273</b>	<b>8,700</b>	<b>3</b>	<b>208</b>	<b>1</b>	<b>50,482</b>	<b>24,259</b>	<b>5</b>	<b>34</b>	<b>6</b>	<b>28</b>	<b>9</b>	<b>76,672</b>			
<b>GRAND TOTAL</b>										<b>13.218</b>		<b>5</b>	<b>217,258</b>	<b>22,303</b>	<b>14,787</b>		<b>694</b>	<b>19,198</b>	<b>48</b>	<b>1,950</b>	<b>10,943</b>	<b>2,273</b>	<b>8,700</b>	<b>3</b>	<b>208</b>	<b>1</b>	<b>50,482</b>	<b>24,259</b>	<b>5</b>	<b>34</b>	<b>6</b>	<b>28</b>	<b>9</b>	<b>76,672</b>			

PROJECT NO.	SHEET NO.	TOTAL NO.
I-5927	3B-3	

### THERMOPLASTIC AND PAINT QUANTITIES

PROJECT NO	COUNTY	MAP NO	ROUTE	DESCRIPTION	TYP NO	LANES	LANE TYPE	LENGTH	WIDTH	4400000000-E	4423000000-N	4510000000-N	4589000000-N	4609000000-N	4688000000-E	7000000000-	4725000000-E	4775000000-E	4815000000-E	4825000000-E	4845000000-N	4905100000-N	4960000000-N				
										WORK ZONE SIGNS (STATIONARY)	WORK ZONE DIGITAL SPEED LIMIT SIGN	LAW ENFORCEMENT	DYNAMIC ZIPPER MERGE SYSTEM DEPLOYMENT	DYNAMIC ZIPPER MERGE SYSTEM	6" X 90 M WHITE THERMO	6" X 90 M YELLOW THERMO	12" X 90 M WHITE THERMO	MERGE ARROW (90 MIL)	6" COLD APPLIED PLASTIC (TYPE 3 WET)	6" WHITE PAINT	6" YELLOW PAINT	12" WHITE PAINT	PAINT PVT MKG SYMBOL	NON-CAST IRON SNOWPLOWABLE PAVEMENT MARKERS	CONNECTED LANE CLOSURE DEVICE	SINGLE LANE CLOSURE	RAMP / LOOP TRAFFIC CONTROL
									SF	EA	HR	LS	DAY	LF	LF	LF	EA	LF	LF	LF	EA	EA	EA	EA			
C204784	Polk	1	I-26 WEST	FROM SC SL TO MP 67.007	1	2	MD	4.095	26	200	5	517			31,897	22,817	1,858	3	2,100	64,254	44,546	3,540	3	470	2	48	
<b>TOTAL FOR MAP NO. 1</b>									<b>200</b>	<b>5</b>	<b>517</b>			<b>31,897</b>	<b>22,817</b>	<b>1,858</b>	<b>3</b>	<b>2,100</b>	<b>64,254</b>	<b>44,546</b>	<b>3,540</b>	<b>3</b>	<b>470</b>	<b>2</b>	<b>48</b>		
C204784	Polk	2	I-26 WEST	MP 67.007 TO 66.632	2	2	MD	0.645	26			77			5,025	3,595							43	2	8		
<b>TOTAL FOR MAP NO. 2</b>									<b>0.645</b>		<b>77</b>			<b>5,025</b>	<b>3,595</b>								<b>43</b>	<b>2</b>	<b>8</b>		
C204784	Polk	3	I-26 WEST	MP 66.362 TO 65	1	2	MD	1.362	26			275			12,368	7,590	1,111	10		24,147	14,817	3,320	10	378	28		
<b>TOTAL FOR MAP NO. 3</b>									<b>1.362</b>		<b>275</b>			<b>12,368</b>	<b>7,590</b>	<b>1,111</b>	<b>10</b>		<b>24,147</b>	<b>14,817</b>	<b>3,320</b>	<b>10</b>	<b>378</b>	<b>28</b>			
C204784	Polk	4	I-26 EAST	FROM MP 65 TO MP 66.32	1	2	MD	1.32	26	104	5	517			11,195	7,685	806		21,857	15,003	1,534		201	2	36		
<b>TOTAL FOR MAP NO. 4</b>									<b>1.32</b>	<b>104</b>	<b>5</b>	<b>517</b>		<b>11,195</b>	<b>7,685</b>	<b>806</b>		<b>21,857</b>	<b>15,003</b>	<b>1,534</b>		<b>201</b>	<b>2</b>	<b>36</b>			
C204784	Polk	5	I-26 EAST	MP 66.32 TO 66.955	2	2	MD	0.635	26			110			4,929	3,521							42		11		
<b>TOTAL FOR MAP NO. 5</b>									<b>0.635</b>		<b>110</b>			<b>4,929</b>	<b>3,521</b>								<b>42</b>		<b>11</b>		
C204784	Polk	6	I-26 EAST	FROM MP 66.955 TO 71.058 (SC SL)	1	2	MD	4.103	29			583			32,174	22,287	437	3	2,100	62,815	44,633	832	3	311	53		
<b>TOTAL FOR MAP NO. 6</b>									<b>4.103</b>		<b>583</b>			<b>32,174</b>	<b>22,287</b>	<b>437</b>	<b>3</b>	<b>2,100</b>	<b>62,815</b>	<b>44,633</b>	<b>832</b>	<b>3</b>	<b>311</b>	<b>53</b>			
C204784	Polk	7	RAMP I-26 WEST	EXIT RAMP TO REST AREA	3	1	MD	0.049	24	104		22			275	275								11	2		
<b>TOTAL FOR MAP NO. 7</b>									<b>0.049</b>	<b>104</b>	<b>22</b>			<b>275</b>	<b>275</b>										<b>11</b>	<b>2</b>	
C204784	Polk	8	RAMP I-26 WEST	ON RAMP FROM REST AREA	3	1	MD	0.04	24	32		22			233	233								3	3		
<b>TOTAL FOR MAP NO. 8</b>									<b>0.04</b>	<b>32</b>	<b>22</b>			<b>233</b>	<b>233</b>										<b>3</b>	<b>3</b>	
C204784	Polk	9	RAMP I-26 WEST	EXIT RAMP EXIT 67	3	1	MD	0.238	24	8		22			1,385	1,385								3	3		
<b>TOTAL FOR MAP NO. 9</b>									<b>0.238</b>	<b>8</b>	<b>22</b>			<b>1,385</b>	<b>1,385</b>										<b>3</b>	<b>3</b>	
C204784	Polk	10	RAMP I-26 WEST	EXIT RAMP ONTO US 74	4	1	MD	0.113	30	44		44			627	627			1,253	1,253				5	5		
<b>TOTAL FOR MAP NO. 10</b>									<b>0.113</b>	<b>44</b>	<b>44</b>			<b>627</b>	<b>627</b>			<b>1,253</b>	<b>1,253</b>					<b>5</b>	<b>5</b>		
C204784	Polk	11	RAMP I-26 WEST	RAMP FROM US 74 ONTO I-26 WEST	1	2	MD	0.15	40	32					1,433	874	578	3		1,663	1,663	1,100	3		7	7	
<b>TOTAL FOR MAP NO. 11</b>									<b>0.15</b>	<b>32</b>				<b>1,433</b>	<b>874</b>	<b>578</b>	<b>3</b>		<b>1,663</b>	<b>1,663</b>	<b>1,100</b>	<b>3</b>			<b>7</b>	<b>7</b>	
C204784	Polk	12	RAMP I-26 EAST	EXIT 67 ON RAMP EAST FROM NC 108	3	1	MD	0.165	24	32		22			961	961								3	2		
<b>TOTAL FOR MAP NO. 12</b>									<b>0.165</b>	<b>32</b>	<b>22</b>			<b>961</b>	<b>961</b>										<b>3</b>	<b>2</b>	
C204784	Polk	13	RAMP I-26 EAST	EXIT RAMP FROM I-26 EAST TO US 74 EAST	1	2	MD	0.303	33	16		99			2,470	1,764	807			4,704	3,360	768		68	10	10	
<b>TOTAL FOR MAP NO. 13</b>									<b>0.303</b>	<b>16</b>	<b>99</b>			<b>2,470</b>	<b>1,764</b>	<b>807</b>			<b>4,704</b>	<b>3,360</b>	<b>768</b>		<b>68</b>	<b>10</b>	<b>10</b>		
<b>TOTAL FOR PROJ NO. C204784</b>									<b>13.218</b>	<b>572</b>	<b>10</b>	<b>2,310</b>	<b>1</b>	<b>730</b>	<b>104,972</b>	<b>73,614</b>	<b>5,597</b>	<b>19</b>	<b>4,200</b>	<b>180,693</b>	<b>125,275</b>	<b>11,094</b>	<b>19</b>	<b>1,513</b>	<b>4</b>	<b>226</b>	<b>32</b>
<b>GRAND TOTAL</b>															<b>178,586</b>	<b>178,586</b>				<b>305,968</b>	<b>305,968</b>						







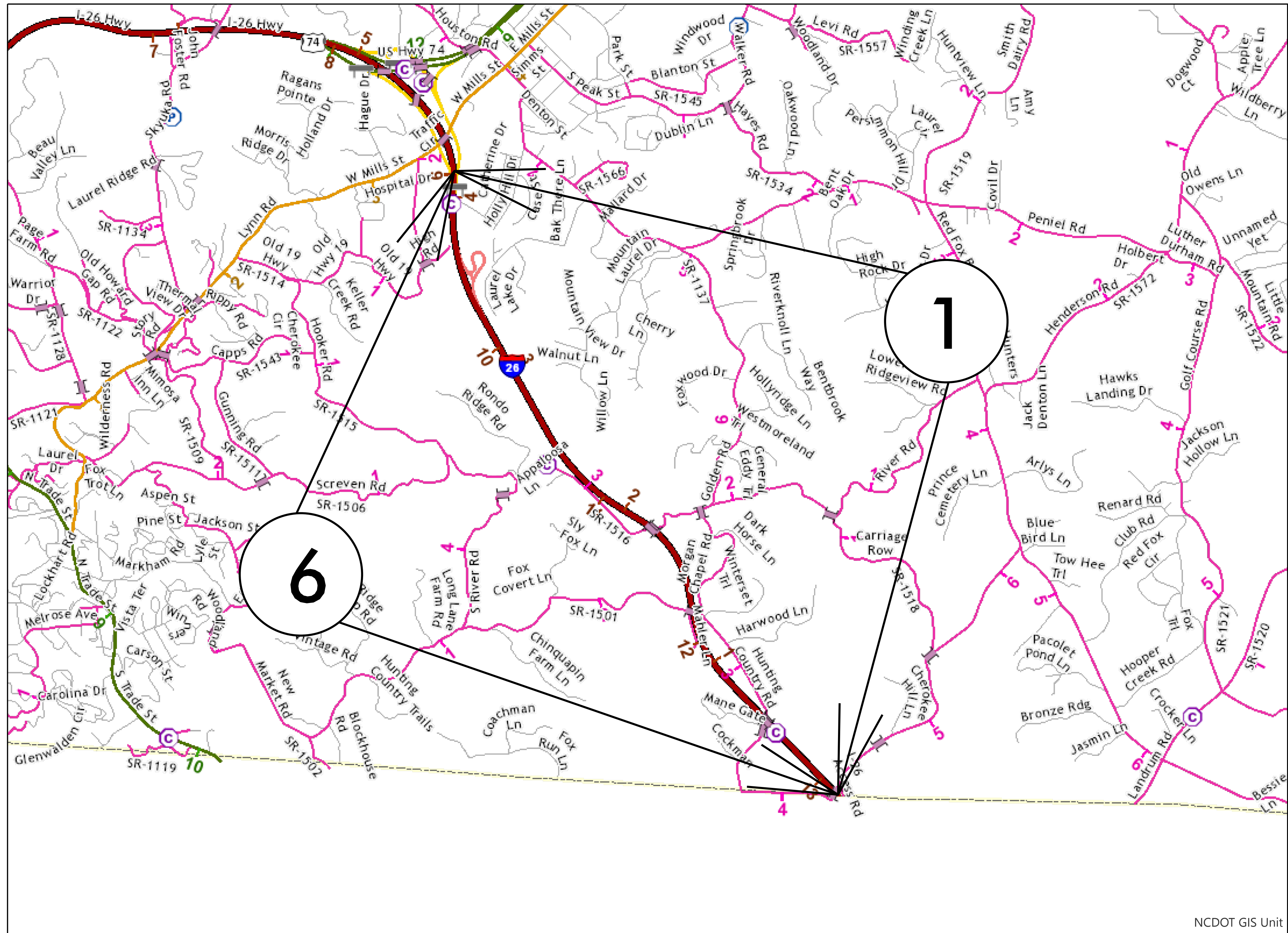


STATE	STATE PROJECT REFERENCE NO.	SHEET NO.	TOTAL SHEETS
N.C.	I-5927	4	

# POLK COUNTY

TIP PROJECT: I-5927

CONTRACT: C204784



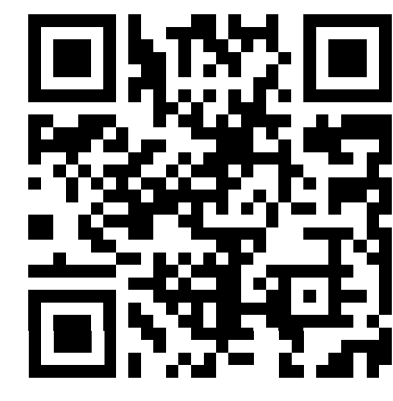
## MAP 1



BEG

END

## MAP 6



BEG

END

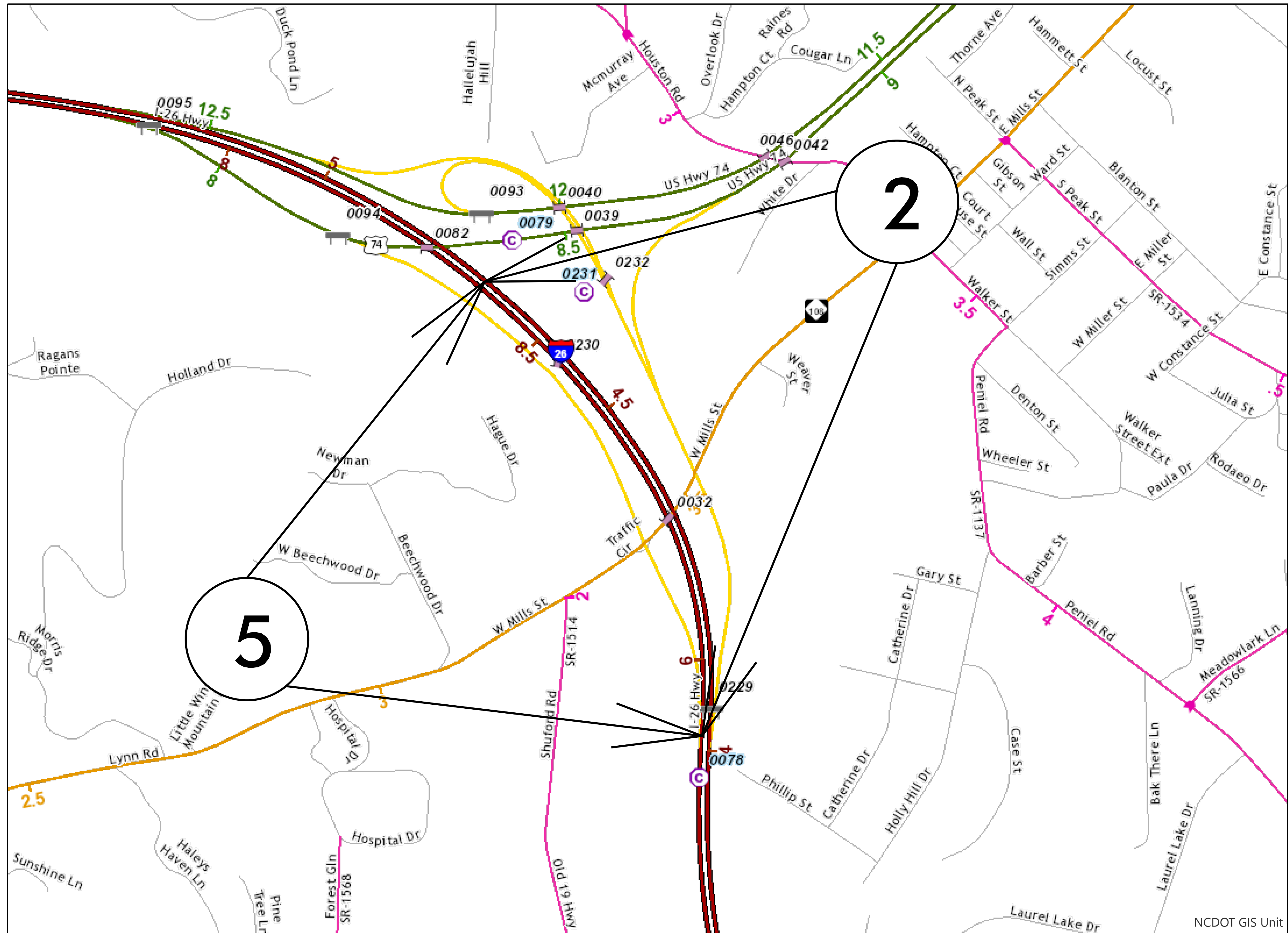


STATE	STATE PROJECT REFERENCE NO.	SHEET NO.	TOTAL SHEETS
N.C.	I-5927	5	

# POLK COUNTY

TIP PROJECT: I-5927

CONTRACT: C204784



## MAP 2



BEG



END

## MAP 5



BEG



END

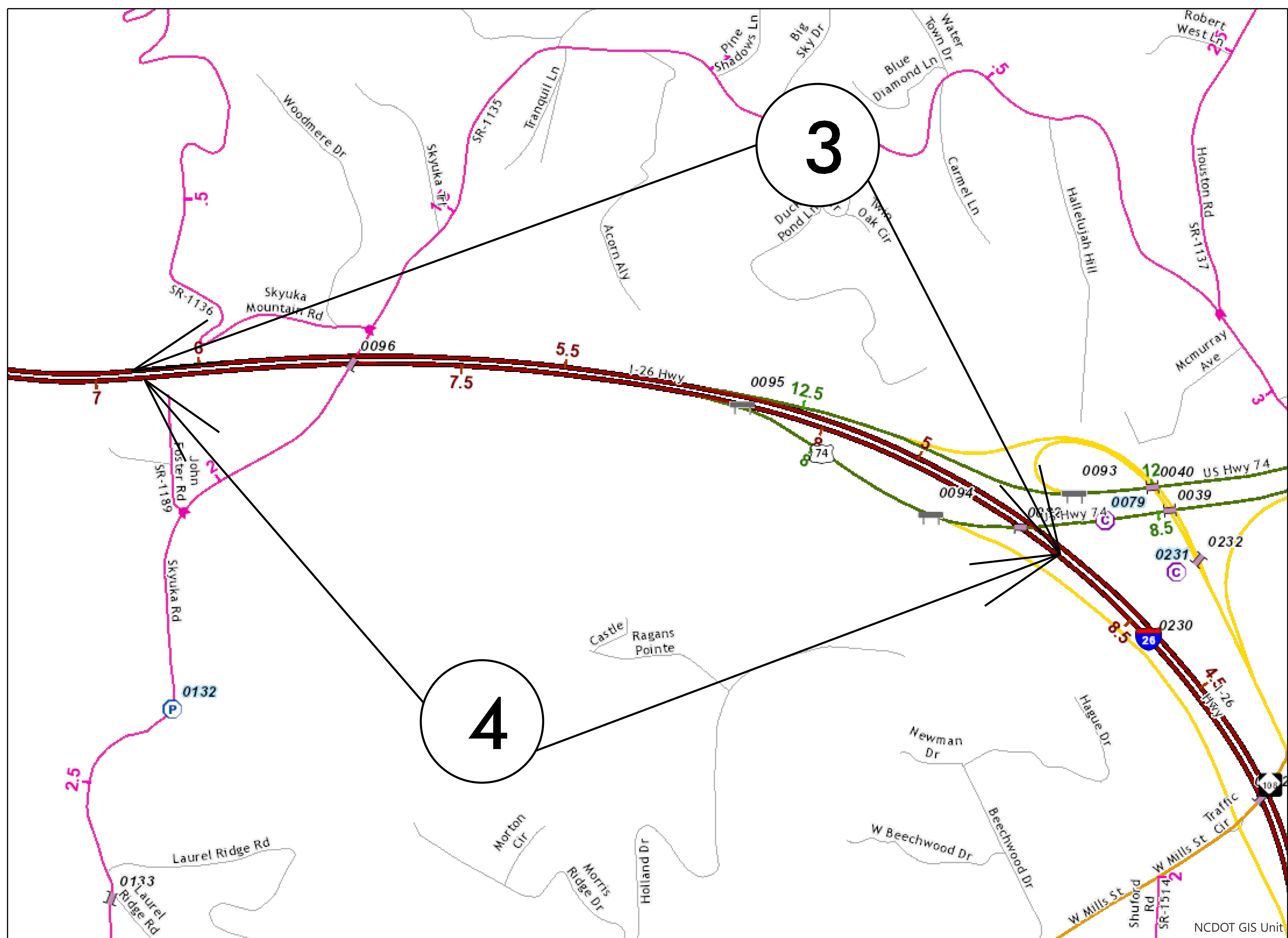
NCDOT GIS Unit

STATE	STATE PROJECT REFERENCE NO.	SHEET NO.	TOTAL SHEETS
N.C.	I-5927	6	

# POLK COUNTY

TIP PROJECT: I-5927

CONTRACT: C204784



## MAP 3



BEG



END

## MAP 4



BEG



END

NCDOT GIS Unit

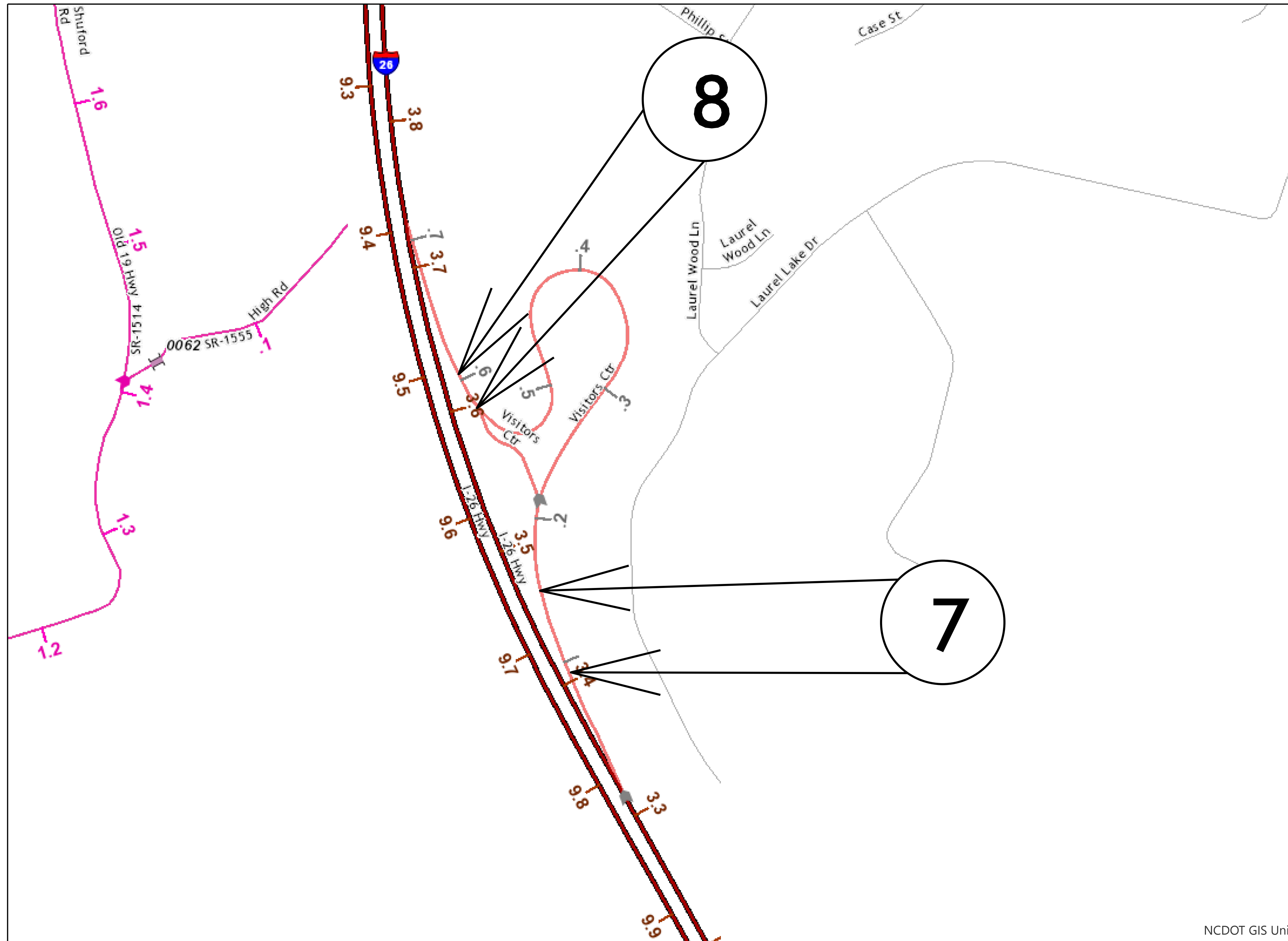


STATE	STATE PROJECT REFERENCE NO.	SHEET NO.	TOTAL SHEETS
N.C.	I-5927	7	

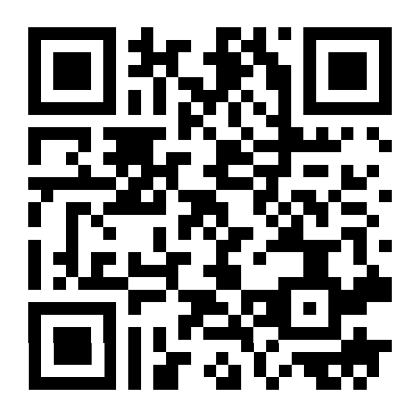
# POLK COUNTY

TIP PROJECT: I-5927

CONTRACT: C204784



## MAP 7



BEG



END

## MAP 8



BEG



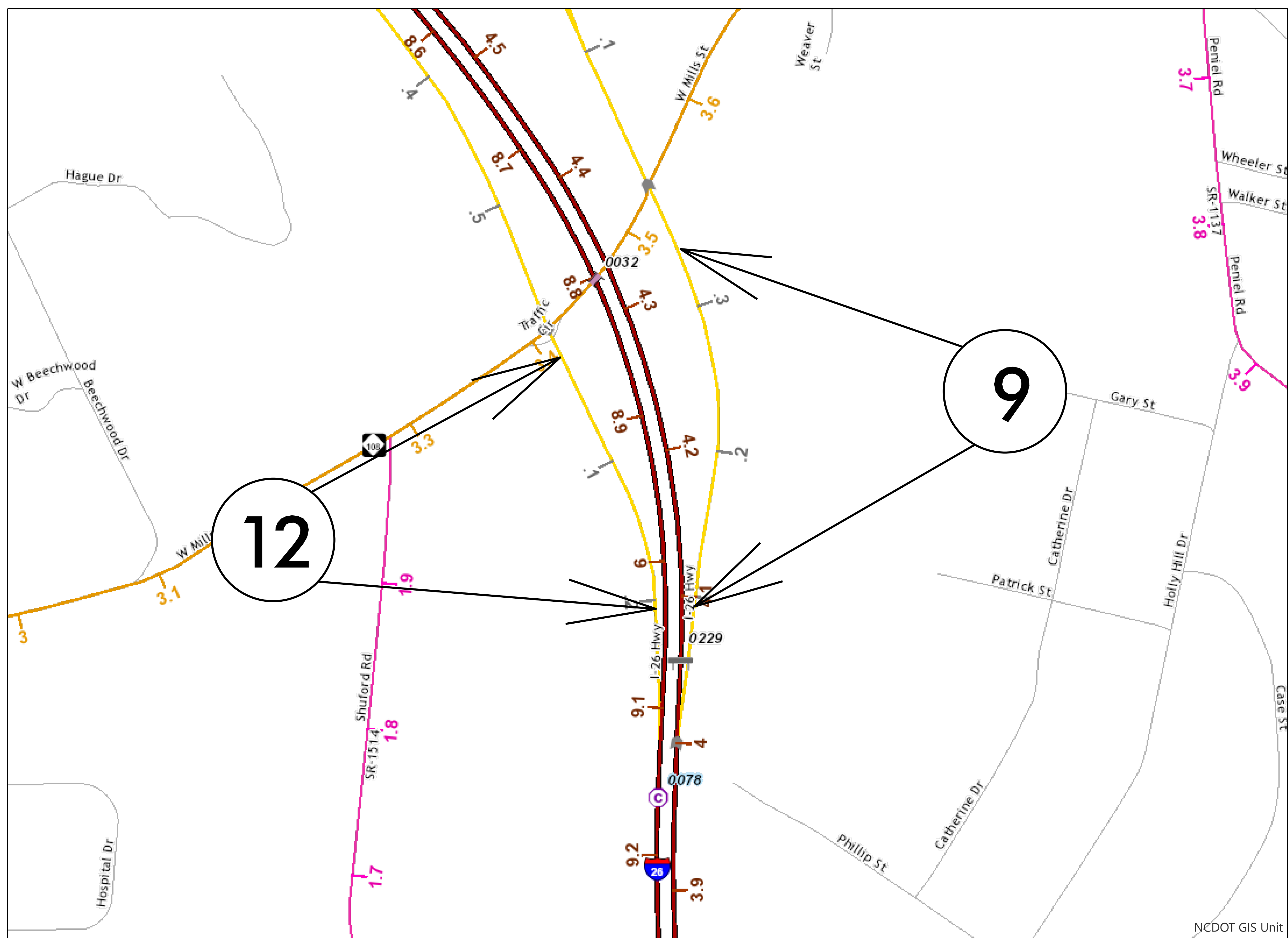
END

STATE	STATE PROJECT REFERENCE NO.	SHEET NO.	TOTAL SHEETS
N.C.	I-5927	8	

# POLK COUNTY

TIP PROJECT: I-5927

CONTRACT: C204784



## MAP 9



BEG



END

## MAP 12



BEG



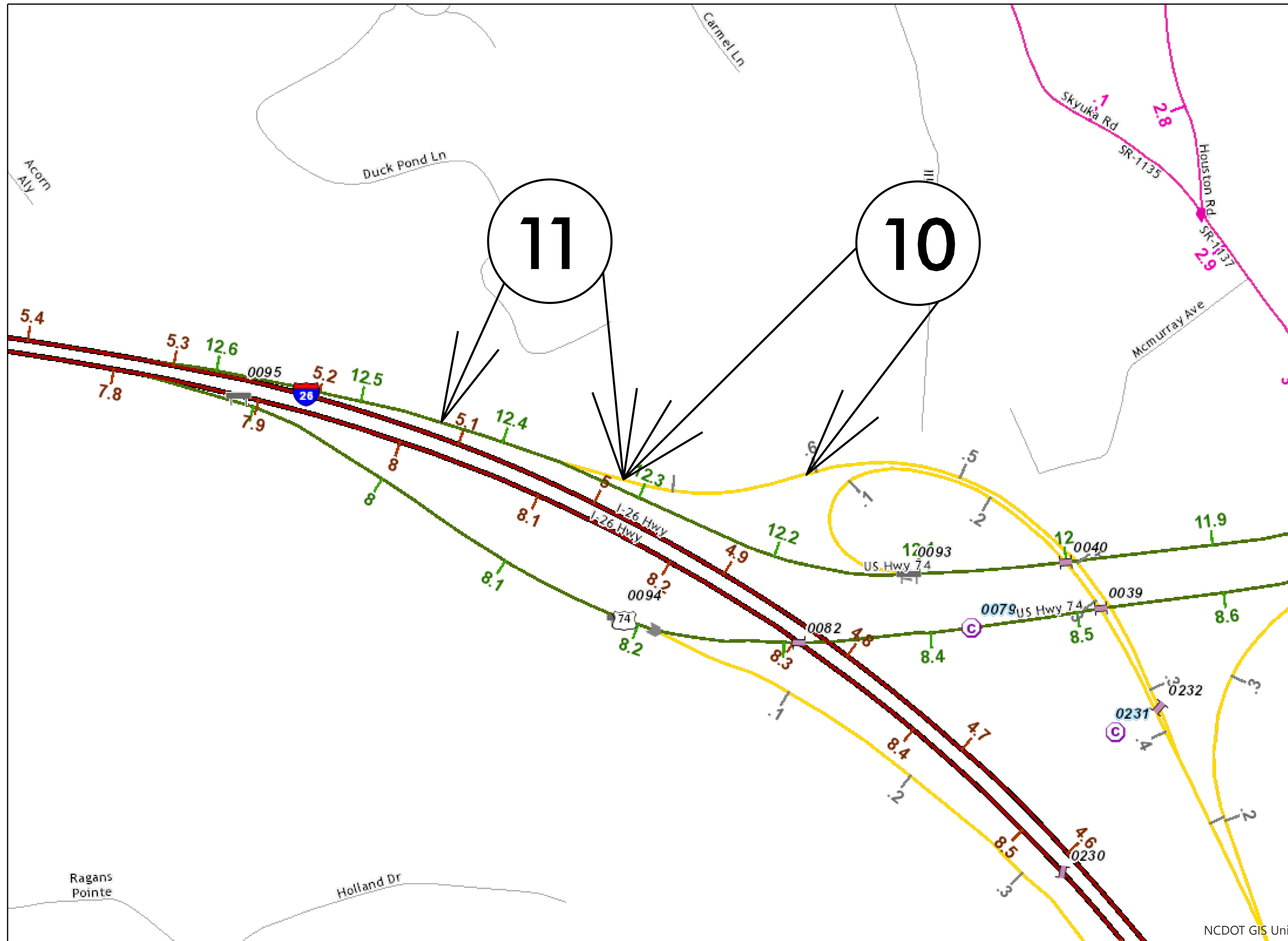
END

STATE	STATE PROJECT REFERENCE NO.	SHEET NO.	TOTAL SHEETS
N.C.	I-5927	9	

# POLK COUNTY

TIP PROJECT: I-5927

CONTRACT: C204784



**MAP 10**



**BEG**



**END**

**MAP 11**



**BEG**



**END**

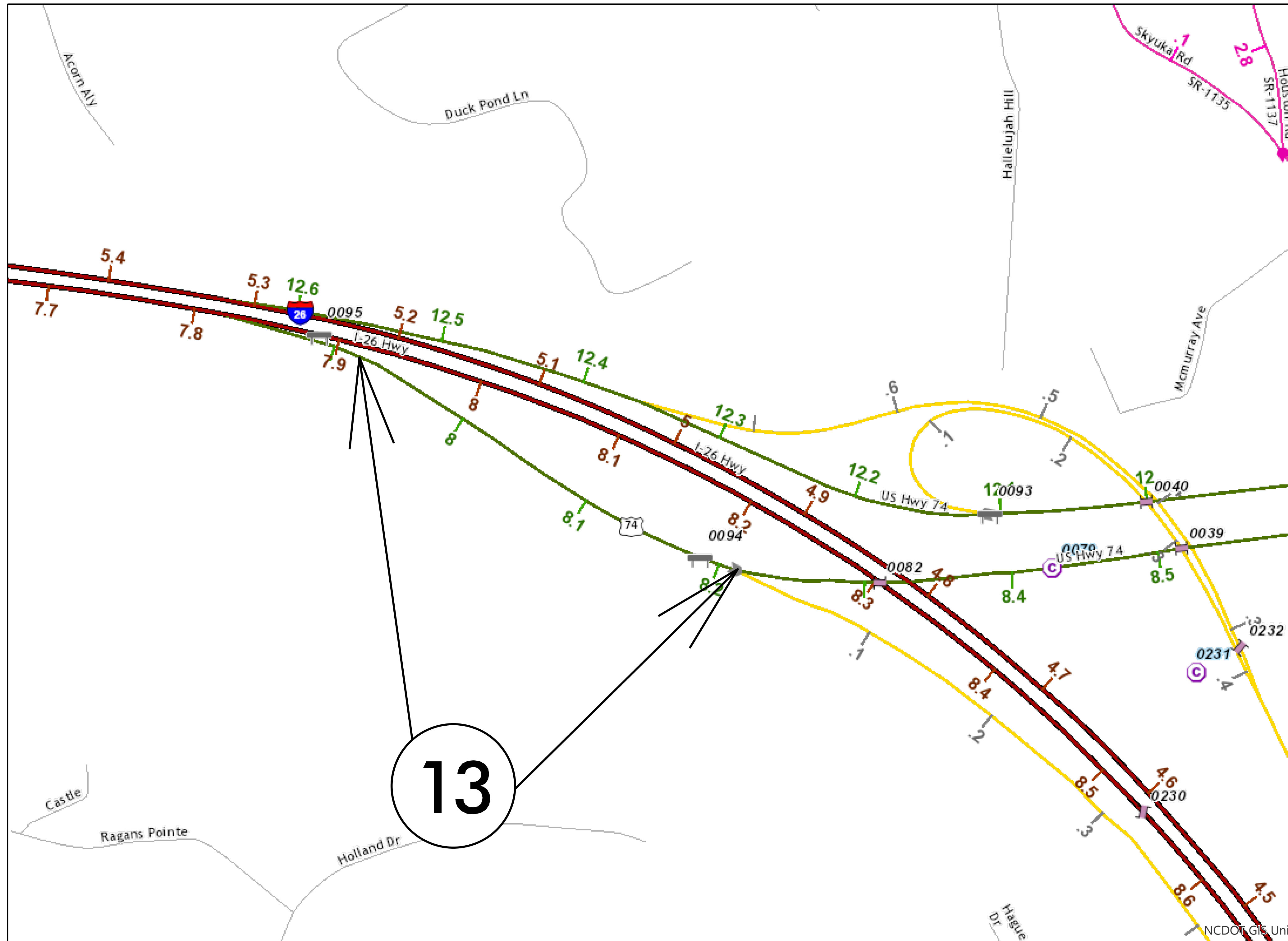


STATE	STATE PROJECT REFERENCE NO.	SHEET NO.	TOTAL SHEETS
N.C.	I-5927	10	

# POLK COUNTY

TIP PROJECT: I-5927

CONTRACT: C204784



## MAP 13



**BEG**



**END**