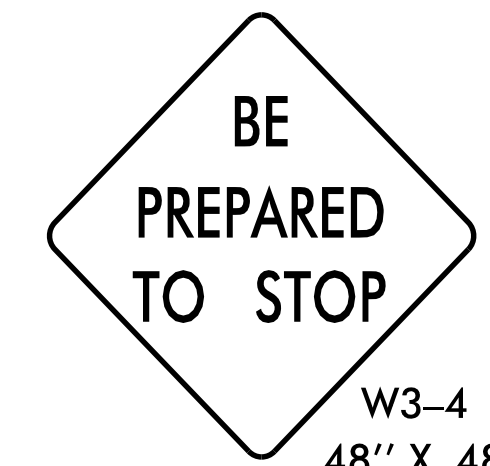




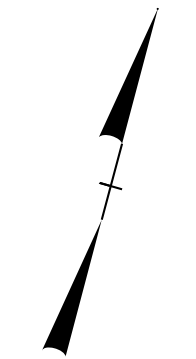
A



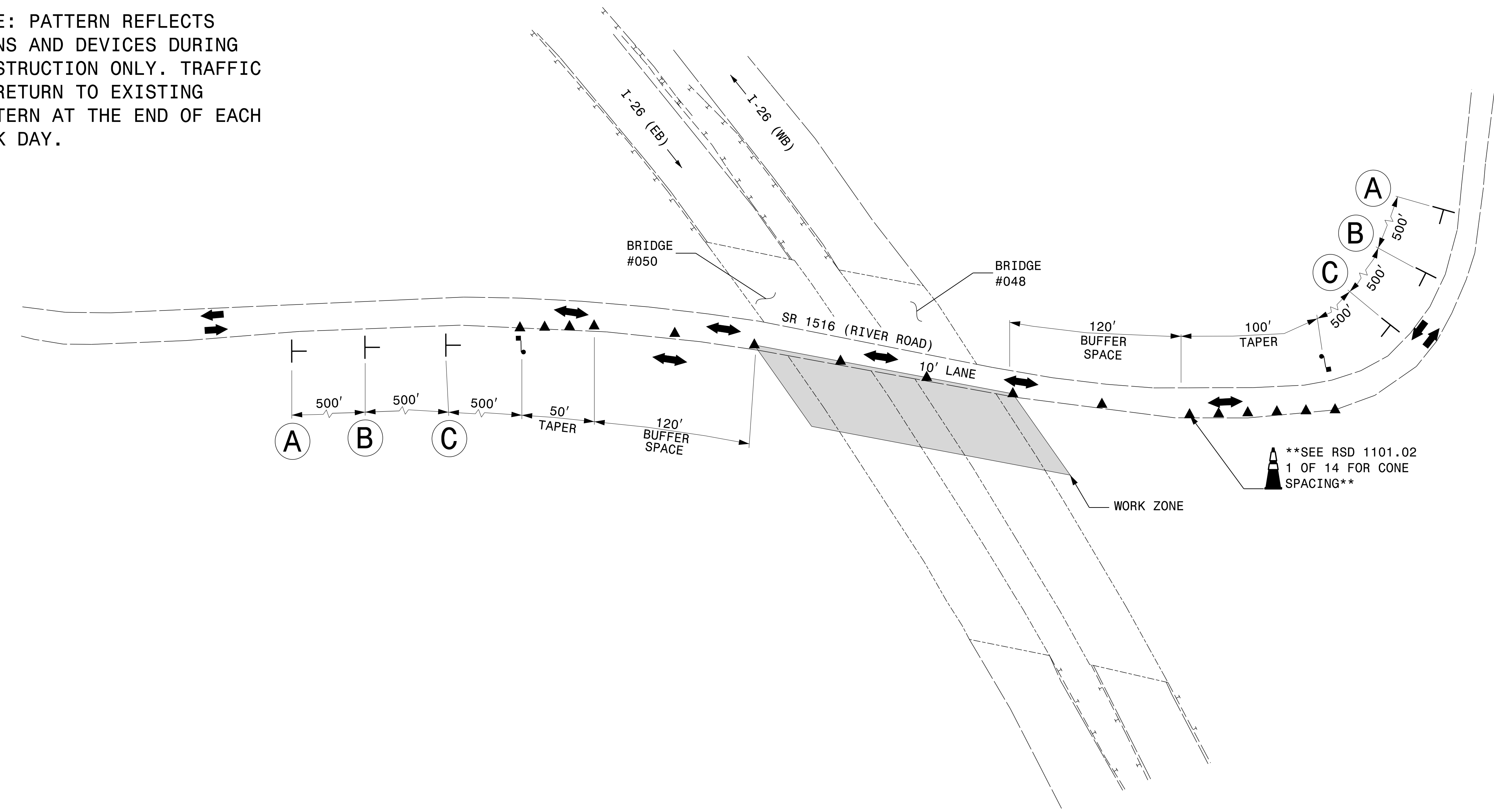
B



C



NOTE: PATTERN REFLECTS SIGNS AND DEVICES DURING CONSTRUCTION ONLY. TRAFFIC TO RETURN TO EXISTING PATTERN AT THE END OF EACH WORK DAY.



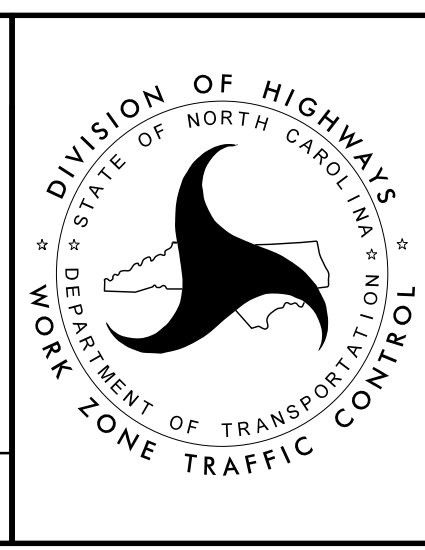
18-JAN-2023 10:37
 P:\PROJECTS\Engineering Projects\10420160 I-5927 Polk County Bridge Preservation\WZTC\I-5927 POLK.WZTC.TMP-11.dgn
 \$\$\$USERNAME\$\$\$

VOLKERT
 5430 Wade Park Blvd., Suite 410
 Raleigh, NC 27607
 Tel. 919-854-0344 Fax. 919-854-0355
 NC License No. F-0765

APPROVED: _____
 DATE: _____

SEAL 1/19/2023
 NORTH CAROLINA PROFESSIONAL ENGINEER
 SEAL 48615
 PATRICK HOLMES, P.E.
 318224236FC7473

DOCUMENT NOT CONSIDERED FINAL UNLESS ALL SIGNATURES COMPLETED



POLK COUNTY
 BRIDGES 740048 & 740050

PLAN VIEW
 PHASE I DETAILS
 (SR 1516)