

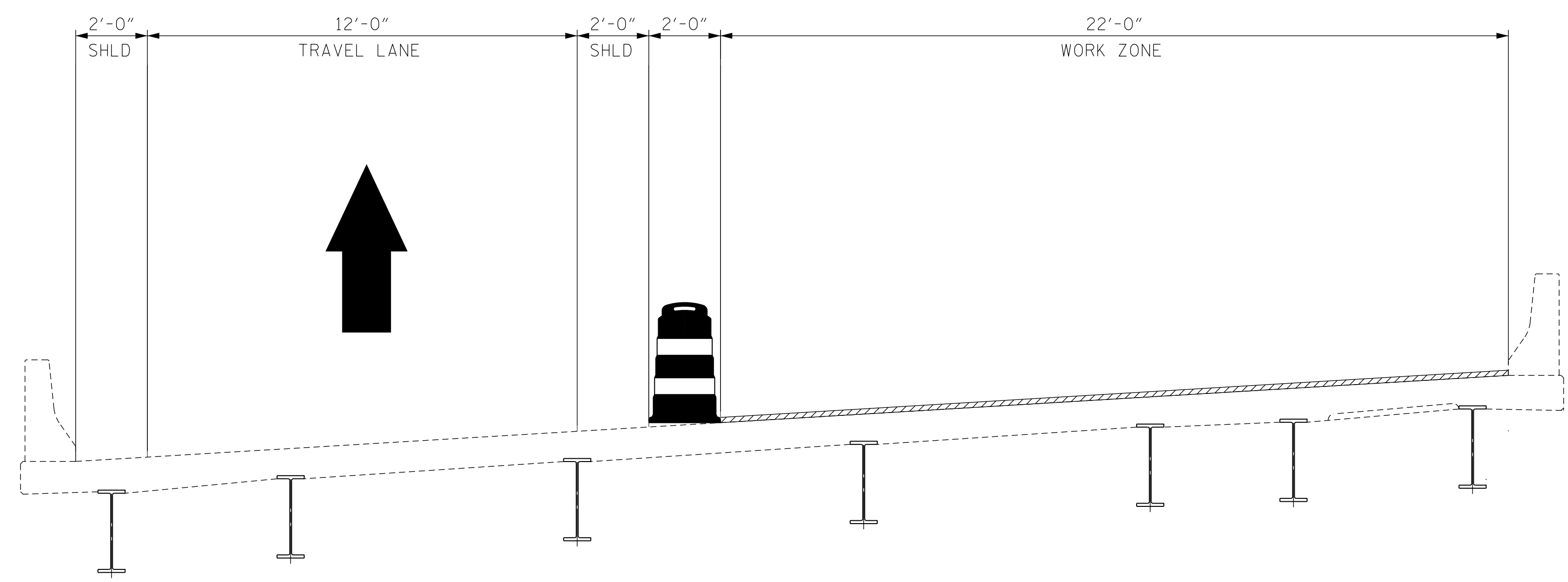
TRAFFIC CONTROL PHASING NOTES:

PHASE I (I-26 WB):

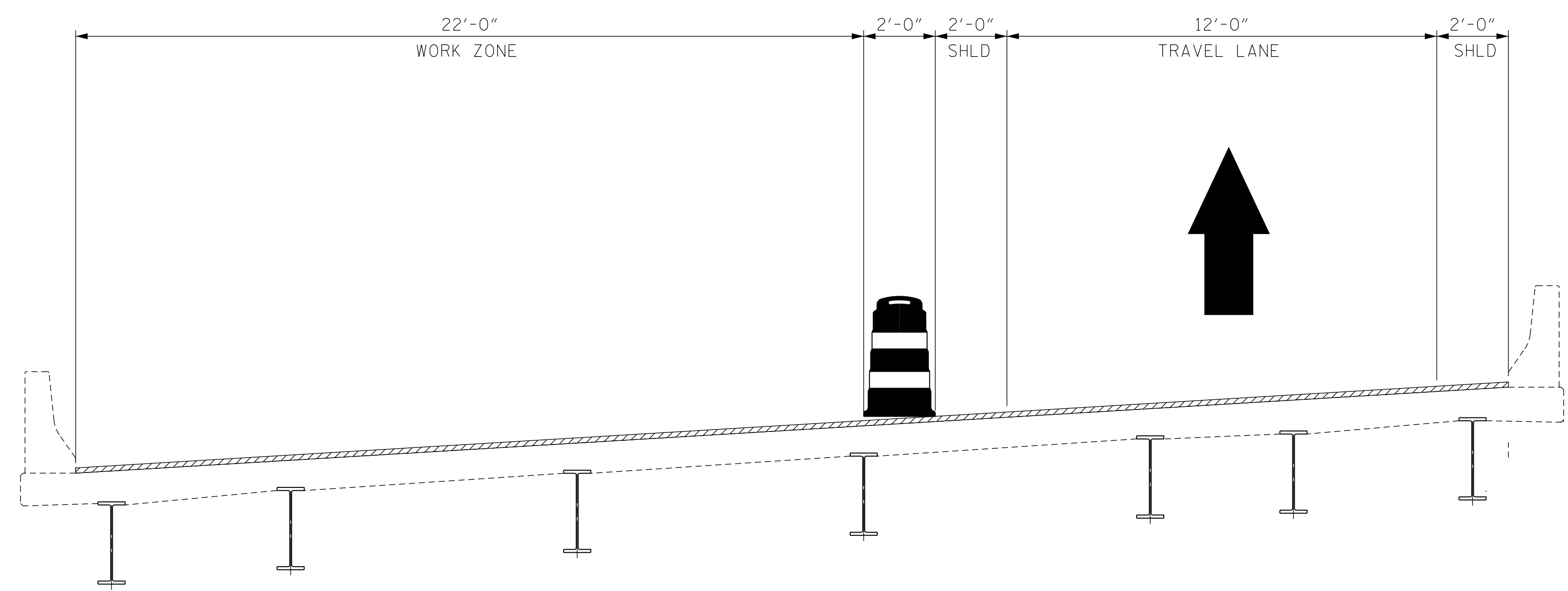
1. USE TMP-08, ROADWAY STANDARD DRAWINGS (RSD) 1101.02 SHEET 4 OF 14 AND RSD 1101.01 SHEET 1 OF 3, TO PLACE ADVANCED WARNING SIGNS AND TRAFFIC CONTROL DEVICES.
2. RECORD EXISTING PAVEMENT MARKINGS.
3. COMPLETE PHASE I BRIDGE WORK.
4. REPLACE ANY EXISTING PAVEMENT MARKINGS THAT WERE OBLITERATED DURING CONSTRUCTION.
5. REMOVE ALL TRAFFIC CONTROL DEVICES. COVER OR REMOVE ALL ADVANCED WARNING SIGNS AND RETURN TRAFFIC TO EXISTING PATTERN.

PHASE II (I-26 WB):

1. USE TMP-08, ROADWAY STANDARD DRAWINGS (RSD) 1101.02 SHEET 4 OF 14 AND RSD 1101.01 SHEET 1 OF 3, TO PLACE ADVANCED WARNING SIGNS AND TRAFFIC CONTROL DEVICES.
2. RECORD EXISTING PAVEMENT MARKINGS.
3. COMPLETE PHASE II BRIDGE WORK.
4. REPLACE ANY EXISTING PAVEMENT MARKINGS THAT WERE OBLITERATED DURING CONSTRUCTION.
5. REMOVE ALL TRAFFIC CONTROL DEVICES. COVER OR REMOVE ALL ADVANCED WARNING SIGNS AND RETURN TRAFFIC TO EXISTING PAVEMENT PATTERN.



TYPICAL SECTION - PHASE I (I-26 WB)

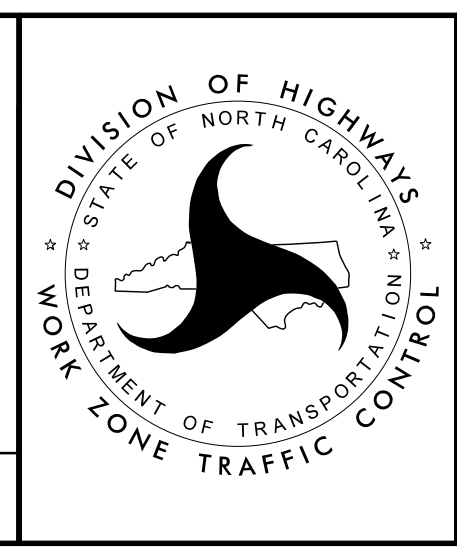


TYPICAL SECTION - PHASE II (I-26 WB)

18-JAN-2023 14:32 P:\PROJECTS\Engineering\Projects\I0420\I60 I-5927 Polk County Bridge Preservation\WZTC\I-5927 POLK.WZTC.TMP-08.dgn \$\$\$USERNAME\$\$\$

VOLKERT
 5430 Wade Park Blvd., Suite 410
 Raleigh, NC 27607
 Tel. 919-854-0344 Fax. 919-854-0355
 NC License No. F-0765

APPROVED: _____
 DATE: _____
 SEAL 1/19/2023
 NORTH CAROLINA PROFESSIONAL ENGINEER
 SEAL 48615
 Patrick N. Holder
 31822A238FC7473



POLK COUNTY
 BRIDGE 740048
 TYPICAL SECTION
 PHASE I & II (I-26 WB)

DOCUMENT NOT CONSIDERED FINAL UNLESS ALL SIGNATURES COMPLETED