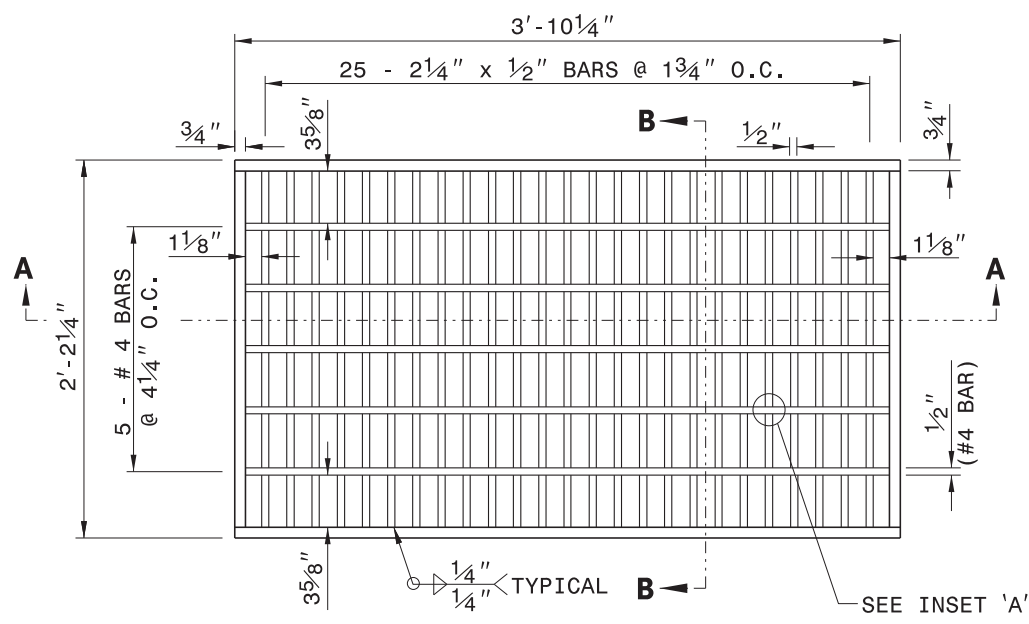


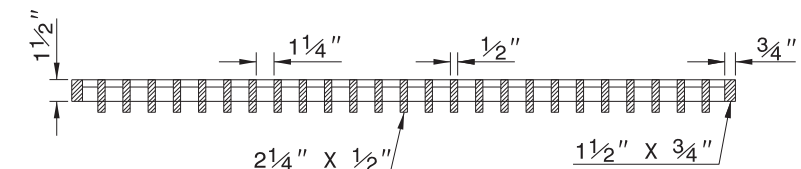
PLAN VIEW



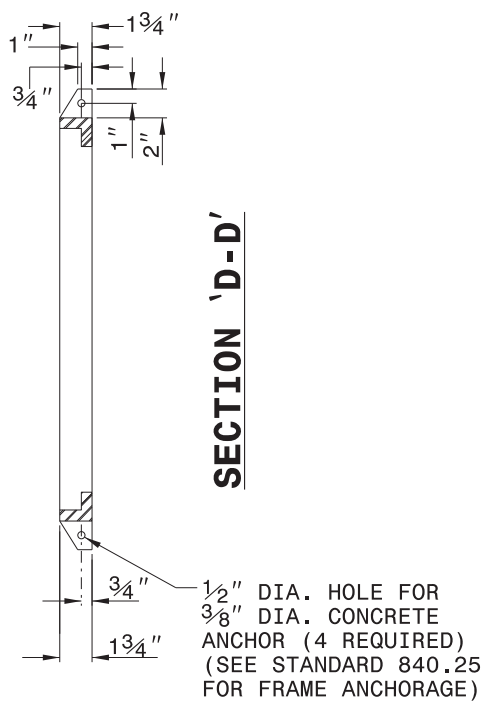
SECTION C-C FRAME



PLAN VIEW

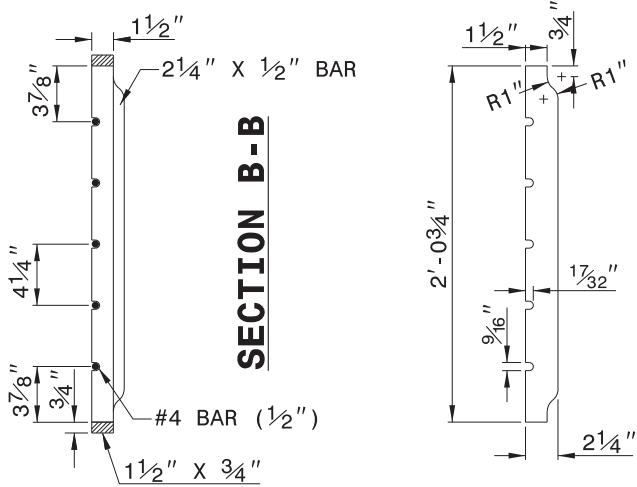


SECTION A-A GRATE



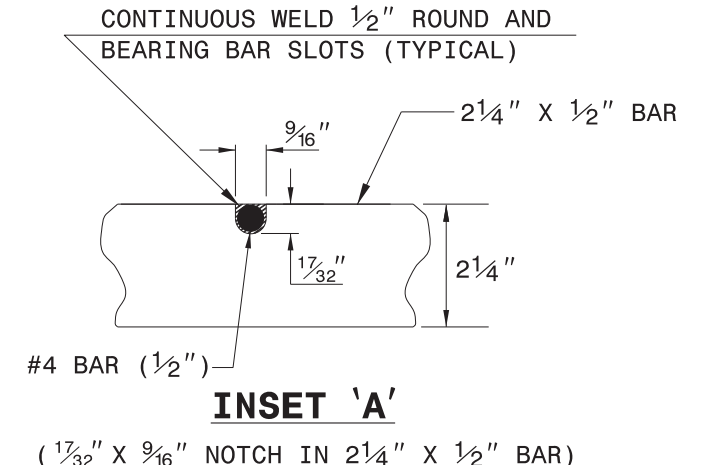
SECTION 'D-D'

1/2" DIA. HOLE FOR 3/8" DIA. CONCRETE ANCHOR (4 REQUIRED) (SEE STANDARD 840.25 FOR FRAME ANCHORAGE)



SECTION B-B

DETAIL OF BEARING BAR



INSET 'A'

(1 7/32" x 9/16" NOTCH IN 2 1/4" x 1/2" BAR)

NOTES:

- 1. HOT DIP GALVANIZE FRAME AND GRATE IN ACCORDANCE WITH ASTM DESIGNATION A-123 AND AASHTO M-111.
2. GRATE SHOULD MEET HS-20 LOADING.
3. PROVIDE STEEL CONFORMING TO THE REQUIREMENTS OF A.S.T.M. DESIGNATION A-36.
4. WELD IN ACCORDANCE WITH THE ANSI/AASHTO/AWS D1.5 WELDING CODE. SEAL WELD ALL CONNECTIONS ALONG TOP AND BOTTOM HORIZONTAL SEAMS OF CONNECTIONS IN ADDITION TO ANY REQUIRED STRUCTURAL WELDS.
5. SEE STANDARD DRAWING 840.25 FOR FRAME ANCHORAGE.

SYTIME\$\$\$\$
DESIGN\$\$\$\$
SERNAME\$

REVISED 10-10-02 FOR HS-20 LOADING
CONTRACT STANDARDS AND DEVELOPMENT UNIT
Office 919-707-6950 FAX 919-250-4119
BICYCLE SAFE STEEL GRATE AND FRAME
ORIGINAL BY:E.E. WARD DATE: 11-12-98
MODIFIED BY:E.E. WARD DATE: 10-10-02
CHECKED BY: DATE:
FILE SPEC.: /usr/stand/details/bicyclesafe.dgn