

**NOTES:**

FOR SECTION A-A, PARTIAL SECTION B-B, AND VIEW C-C, SEE SHEET 2 OF 2.

FOR REINFORCING STEEL BILL OF MATERIAL, SEE SHEET 2 OF 2.

STIRRUPS AND #4 U1 BARS IN CAP MAY BE SHIFTED AS NECESSARY TO AVOID ANCHOR BOLTS.

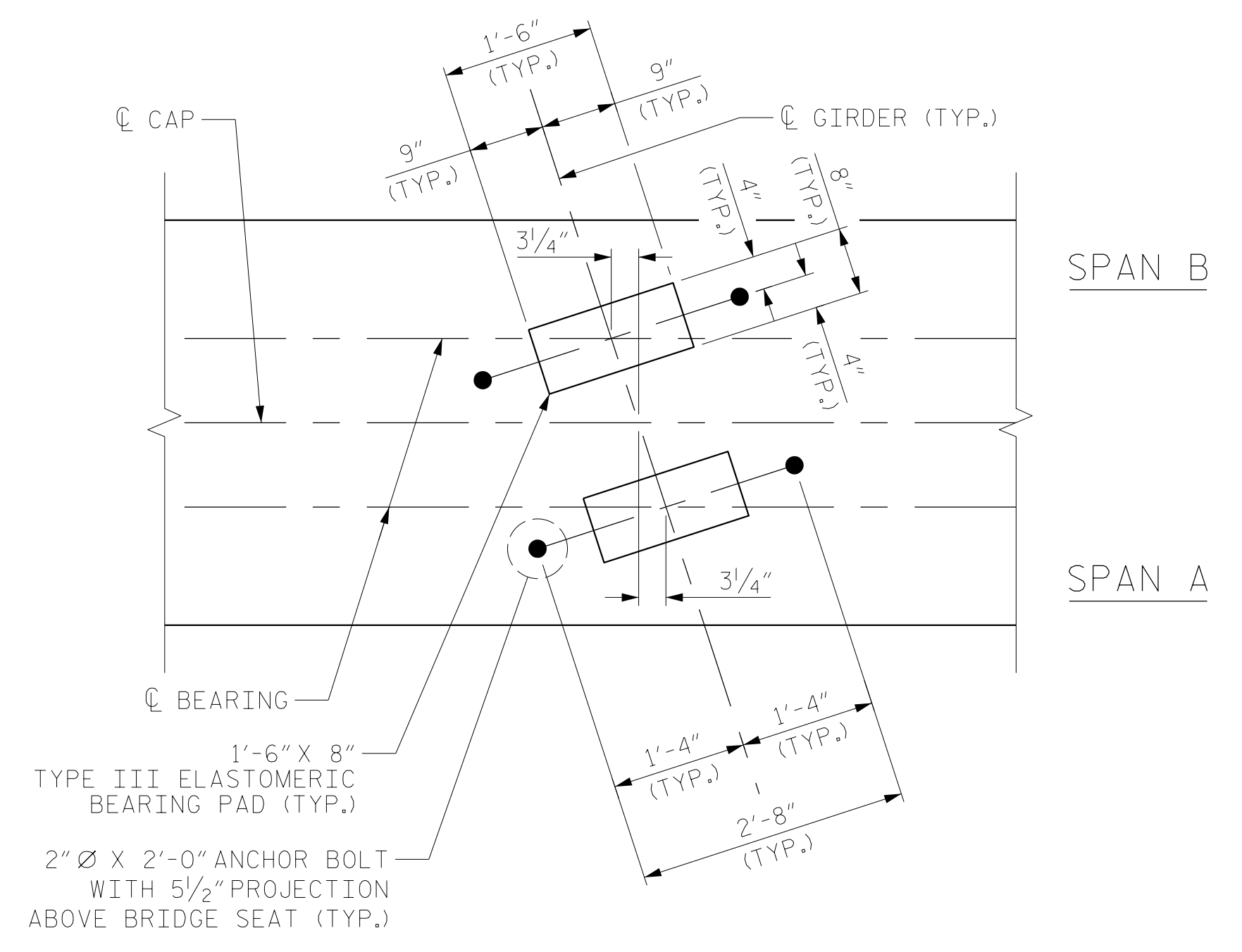
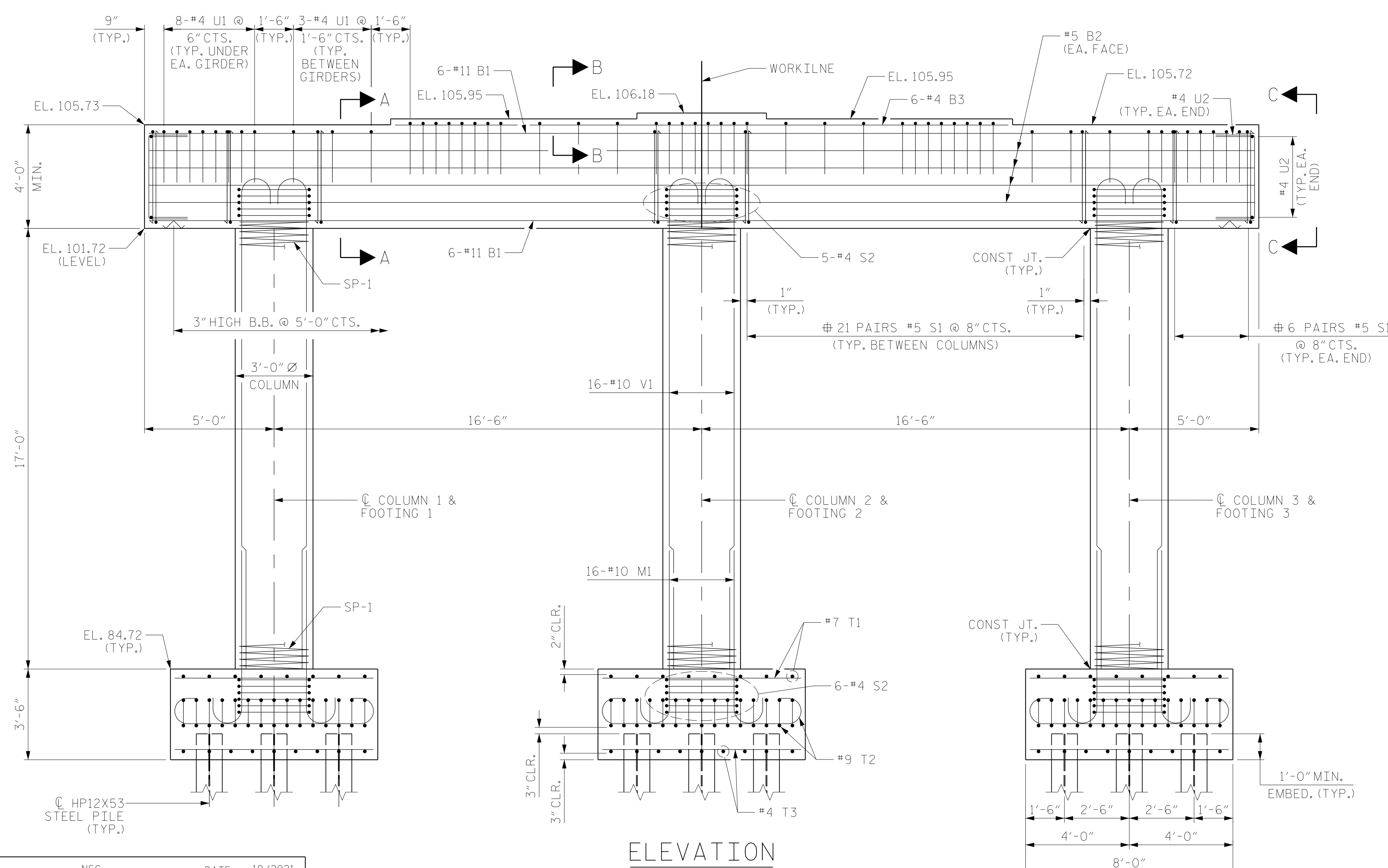
#4 U2 BARS IN ENDS OF CAP MAY BE SHIFTED AS NECESSARY TO AVOID #5 B2 BARS.

HOOKS ON #11 V1 BARS AND #9 T2 BARS MAY BE TURNED AS NECESSARY FOR PLACING REINFORCING STEEL.

THE CONTRACTOR'S ATTENTION SHALL BE CALLED TO THE FACT THAT A MINIMUM OF 1'-6" EARTH COVER OVER ALL FOOTINGS SHALL BE MAINTAINED AFTER CONSTRUCTION IS COMPLETE.

⊕ INVERT ALTERNATE #5 S1 STIRRUP PAIRS.

#7 V2 BARS IN PILES MAY BE BENT AS NECESSARY IN ORDER TO MEET MINIMUM COVER REQUIREMENTS.



**DETAIL "A"**  
DIMENSIONS ARE TYPICAL FOR EACH GIRDER

PROJECT NO. R-5751  
ROBESON COUNTY  
 STATION: 37+99.89 -Y1B-

SHEET 1 OF 2

**RS&H**  
 RS&H Architects-Engineers-Planners, Inc.  
 8521 Six Forks Road, Suite 400  
 Raleigh, NC 27615  
 919-926-4100 FAX 919-846-9080  
 www.rsandh.com  
 North Carolina License No. 00793-F-0403-1-C-01

STATE OF NORTH CAROLINA DEPARTMENT OF TRANSPORTATION RALEIGH					
SUBSTRUCTURE BENT 1					
REVISIONS					
NO.	BY:	DATE:	NO.	BY:	DATE:
1			3		
2			4		

SHEET NO.	S-21
TOTAL SHEETS	28

DRAWN BY : NSC DATE : 10/2021  
 CHECKED BY : MRA DATE : 11/2021  
 DESIGN ENGINEER OF RECORD: MKO DATE : 10/2022

**ELEVATION**  
 REINFORCING STEEL AND DIMENSIONS ARE TYPICAL FOR EACH COLUMN AND FOOTING

DOCUMENT NOT CONSIDERED FINAL UNLESS ALL SIGNATURES COMPLETED