

NOTES

ALL PRESTRESSING STRANDS SHALL BE 7-WIRE LOW-RELAXATION GRADE 270 STRANDS AND SHALL CONFORM TO AASHTO M203 EXCEPT FOR SAMPLING REQUIREMENTS WHICH SHALL BE IN ACCORDANCE WITH THE STANDARD SPECIFICATIONS.

ALL REINFORCING STEEL SHALL BE GRADE 60.

APPLY EPOXY PROTECTIVE COATING TO END OF GIRDER SURFACES INDICATED IN ELEVATION VIEW.

EMBEDDED PLATE "B-1" SHALL BE GALVANIZED IN ACCORDANCE WITH THE STANDARD SPECIFICATIONS.

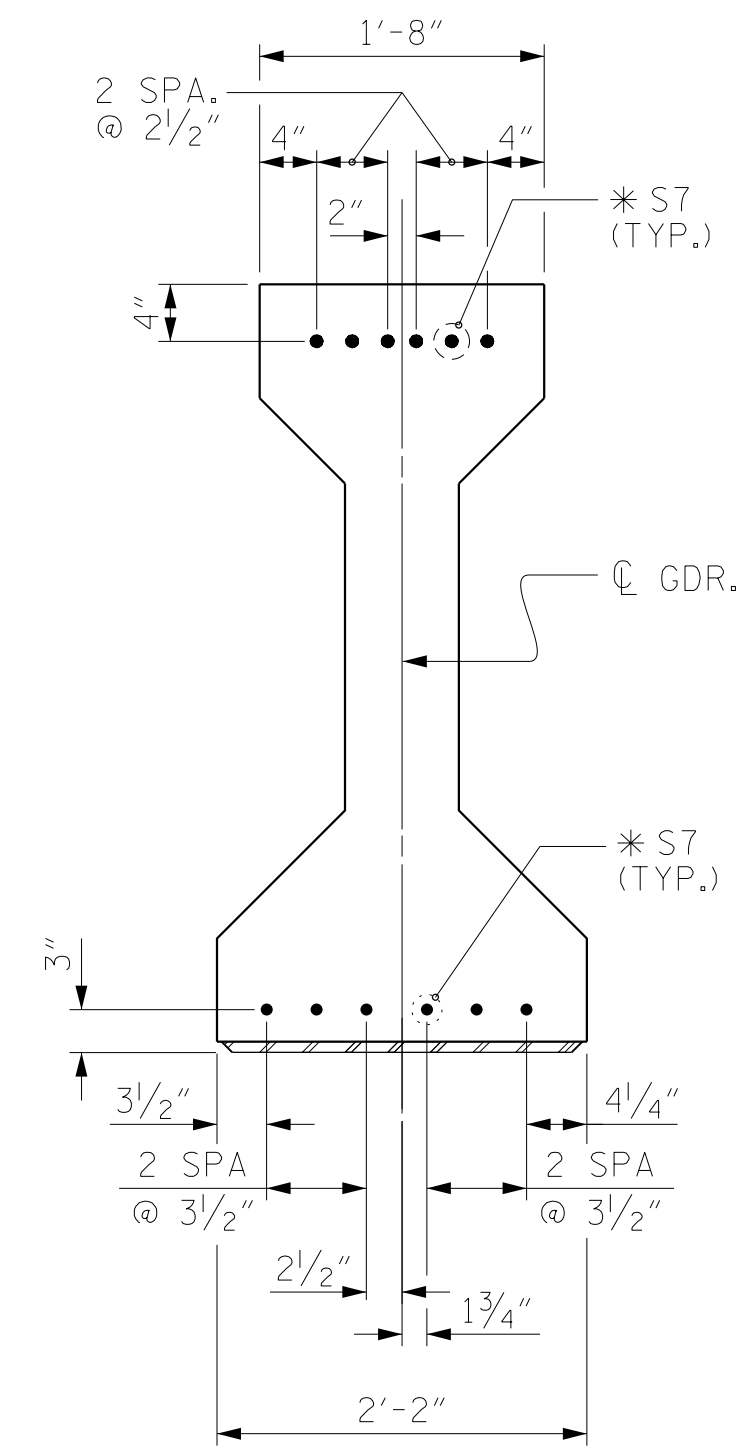
ANCHOR STUDS SHALL CONFORM TO AASHTO M169 GRADES 1010 THROUGH 1020 OR APPROVED EQUAL, AND SHALL MEET THE TYPE "B" REQUIREMENTS OF SUBSECTION 7.3 OF THE ANSI/AASHTO/AWS D1.5 BRIDGE WELDING CODE.

AT ENDS OF GIRDERS TO BE EMBEDDED IN CONCRETE DIAPHRAGMS OR END WALLS, PRESTRESSING STRANDS MAY EXTEND A MAXIMUM OF 2" BEYOND THE GIRDER ENDS. OTHERWISE, PRESTRESSING STRANDS SHALL BE CUT FLUSH WITH THE GIRDER ENDS.

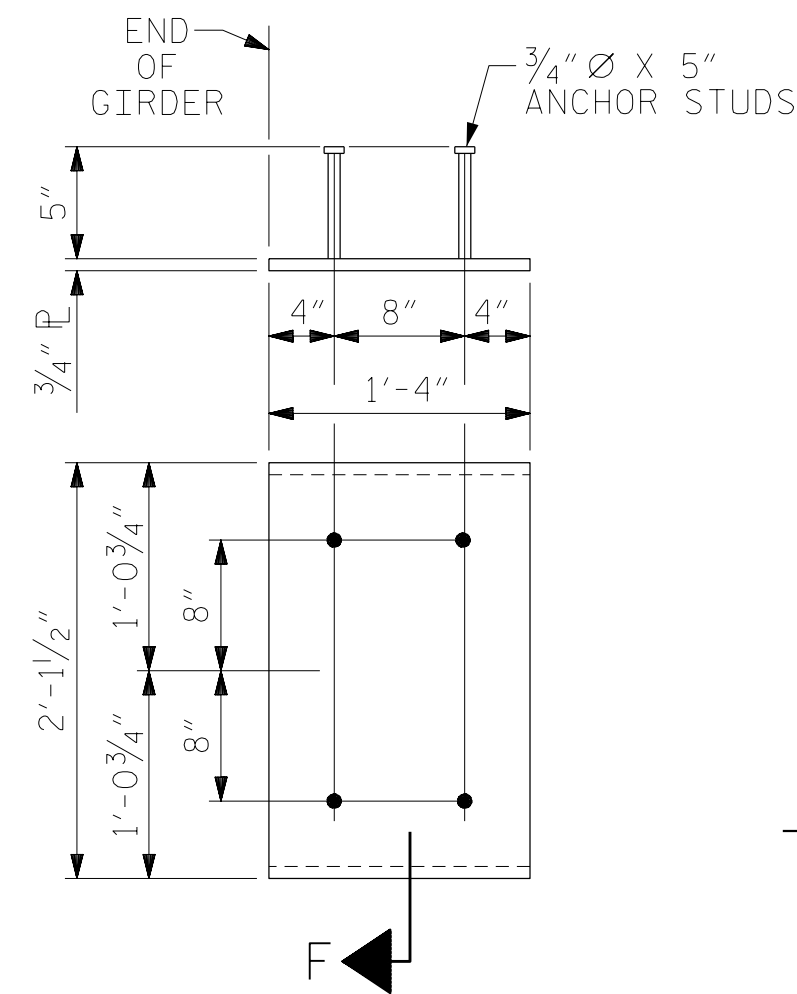
THE TRANSFER OF LOAD FROM THE ANCHORAGES TO THE GIRDER SHALL BE DONE WHEN CONCRETE HAS REACHED A COMPRESSIVE STRENGTH OF NOT LESS THAN 6,000 PSI.

DEPENDING ON THE TYPE OF SYSTEM USED TO SUPPORT THE DECK SLAB FORMS, PRESET ANCHORS MAY BE NECESSARY IN THE PRESTRESSED CONCRETE GIRDER.

THE TOP SURFACE OF THE GIRDER, EXCLUDING THE OUTSIDE 4", AND INDICATED ON THE GIRDER SHEET, SHALL BE RAKED TO A DEPTH OF 1/4".

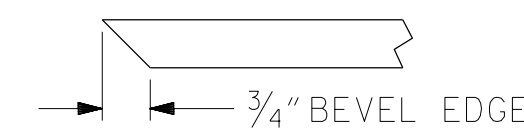


DETAIL "A"



EMBEDDED PLATE "B-1" DETAILS

(2 REQ'D PER GIRDER)



SECTION "F"

(SEE NOTES)

— DEAD LOAD DEFLECTION TABLE FOR GIRDERS —

0.6" Ø LOW RELAXATION	SPAN A AND SPAN B																					
	GIRDERS 1 AND 5 (EXTERIOR)																					
	TWENTIETH POINTS	0	0.05	0.1	0.15	0.2	0.25	0.3	0.35	0.4	0.45	0.5	0.55	0.6	0.65	0.7	0.75	0.8	0.85	0.9	0.95	1.0
CAMBER (GIRDER ALONE IN PLACE)	↑	0	0.026	0.052	0.076	0.098	0.118	0.134	0.148	0.157	0.163	0.165	0.163	0.157	0.148	0.134	0.118	0.098	0.076	0.052	0.026	0
* DEFLECTION DUE TO SUPERIMPOSED D.L.	↓	0	0.017	0.034	0.050	0.065	0.078	0.089	0.098	0.104	0.108	0.109	0.108	0.104	0.098	0.089	0.078	0.065	0.050	0.034	0.017	0
FINAL CAMBER	↑	0	1/8	3/16	5/16	3/8	1/2	9/16	5/8	5/8	11/16	11/16	11/16	5/8	5/8	9/16	1/2	3/8	5/16	3/16	1/8	0
0.6" Ø LOW RELAXATION	GIRDERS 2 - 4 (INTERIOR)																					
	TWENTIETH POINTS	0	0.05	0.1	0.15	0.2	0.25	0.3	0.35	0.4	0.45	0.5	0.55	0.6	0.65	0.7	0.75	0.8	0.85	0.9	0.95	1.0
	CAMBER (GIRDER ALONE IN PLACE)	↑	0	0.026	0.052	0.076	0.098	0.118	0.134	0.148	0.157	0.163	0.165	0.163	0.157	0.148	0.134	0.118	0.098	0.076	0.052	0.026
* DEFLECTION DUE TO SUPERIMPOSED D.L.	↓	0	0.017	0.034	0.050	0.065	0.078	0.089	0.098	0.104	0.108	0.110	0.108	0.104	0.098	0.089	0.078	0.065	0.050	0.034	0.017	0
FINAL CAMBER	↑	0	1/8	3/16	5/16	3/8	1/2	9/16	5/8	5/8	11/16	11/16	11/16	5/8	5/8	9/16	1/2	3/8	5/16	3/16	1/8	0

* INCLUDES FUTURE WEARING SURFACE IN SUPERIMPOSED DEAD LOAD. ALL VALUES ARE SHOWN IN FEET (DECIMAL FORM), EXCEPT 'FINAL CAMBERS', WHICH IS SHOWN IN INCHES (FRACTION FORM).

PROJECT NO. R-5751
ROBESON COUNTY
 STATION: 37+99.89 -Y1B-

SHEET 2 OF 2

RS&H
 RS&H Architects-Engineers-Planners, Inc.
 8521 Six Forks Road, Suite 400
 Raleigh, NC 27615
 919-926-4100 FAX 919-846-9080
 www.rsandh.com
 North Carolina License Nos. 50737-F-0403-C-08

STATE OF NORTH CAROLINA
 DEPARTMENT OF TRANSPORTATION
 RALEIGH

SUPERSTRUCTURE
 DEAD LOAD
 DEFLECTION TABLES AND
 PRESTRESSED CONCRETE
 GIRDER DETAILS

SHEET NO.
S-12

TOTAL SHEETS
28

REVISIONS					
NO.	BY:	DATE:	NO.	BY:	DATE:
1			3		
2			4		

DOCUMENT NOT CONSIDERED FINAL UNLESS ALL SIGNATURES COMPLETED

DRAWN BY : TWL DATE : 10/2021
 CHECKED BY : MRA DATE : 10/2021
 DESIGN ENGINEER OF RECORD: MKO DATE : 10/2022