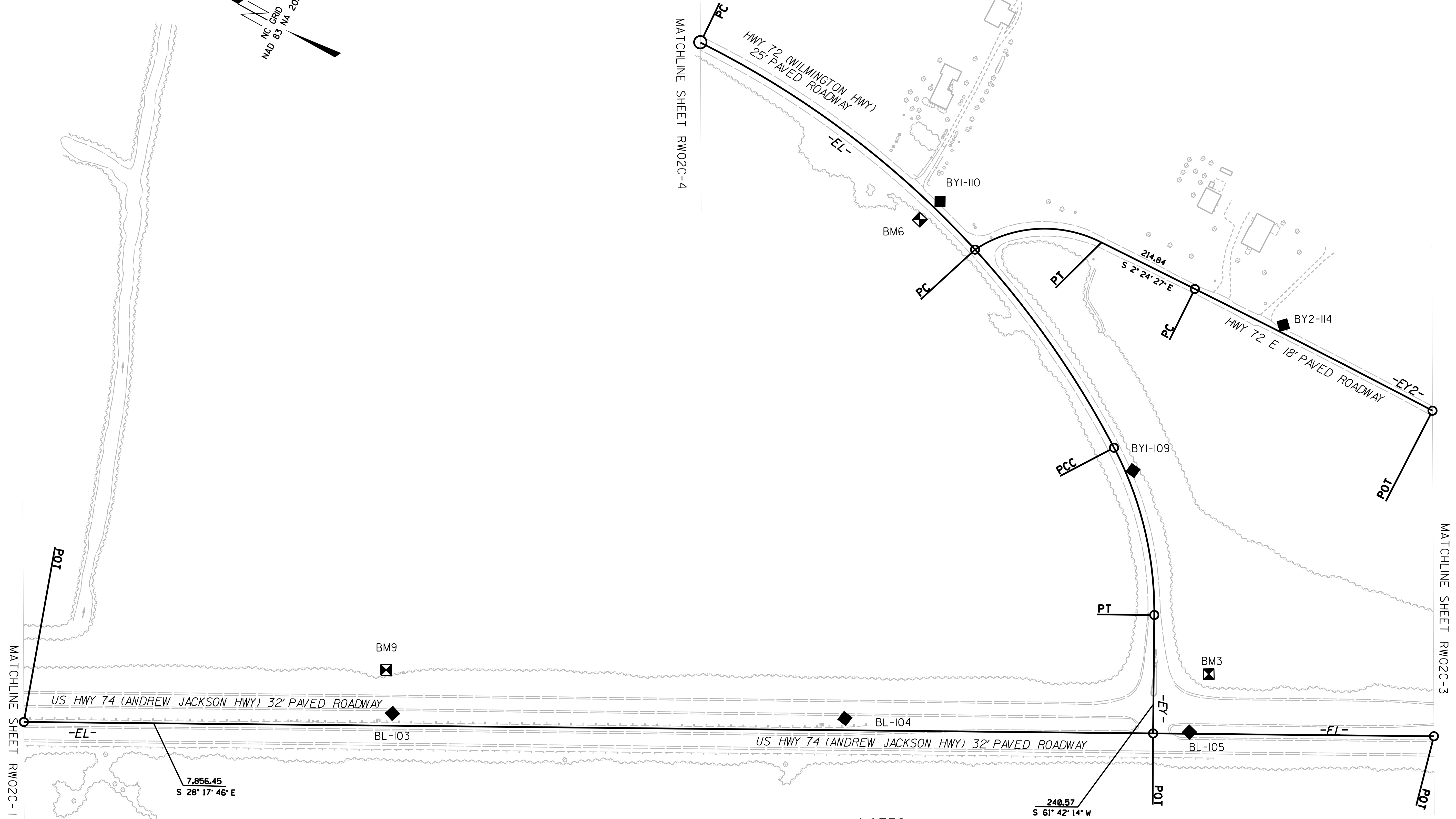
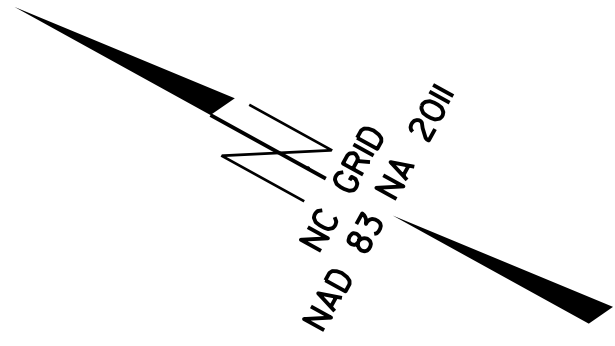


# SURVEY CONTROL SHEET

W/ EXISTING CENTERLINE ALIGNMENTS PRIOR TO CONSTRUCTION



**NOTES:**

1. PROJECT CONTROL WAS ESTABLISHED USING GNSS, THE GLOBAL NAVIGATION SATELLITE SYSTEM.
2. THE SURVEY CONTROL DATA FOR THIS PROJECT HAS BEEN COMPILED FROM VARIOUS SOURCES. IF FURTHER INFORMATION REGARDING PROJECT CONTROL IS NEEDED, PLEASE CONTACT THE LOCATION AND SURVEYS UNIT.

6/2/19

30 AUG 2018 16:03 from: SEP1\R-5751 Revised Control Sheets 8.30.18\final revised files\R5751-revised control sheets 180830\R5751-rw02c-2-180830.dgn  
 24 JUN 2018 10:41 from: SEP1\R-5751 Revised Control Sheets 8.30.18\final revised files\R5751-revised control sheets 180830\R5751-rw02c-2-180830.dgn

REVISIONS