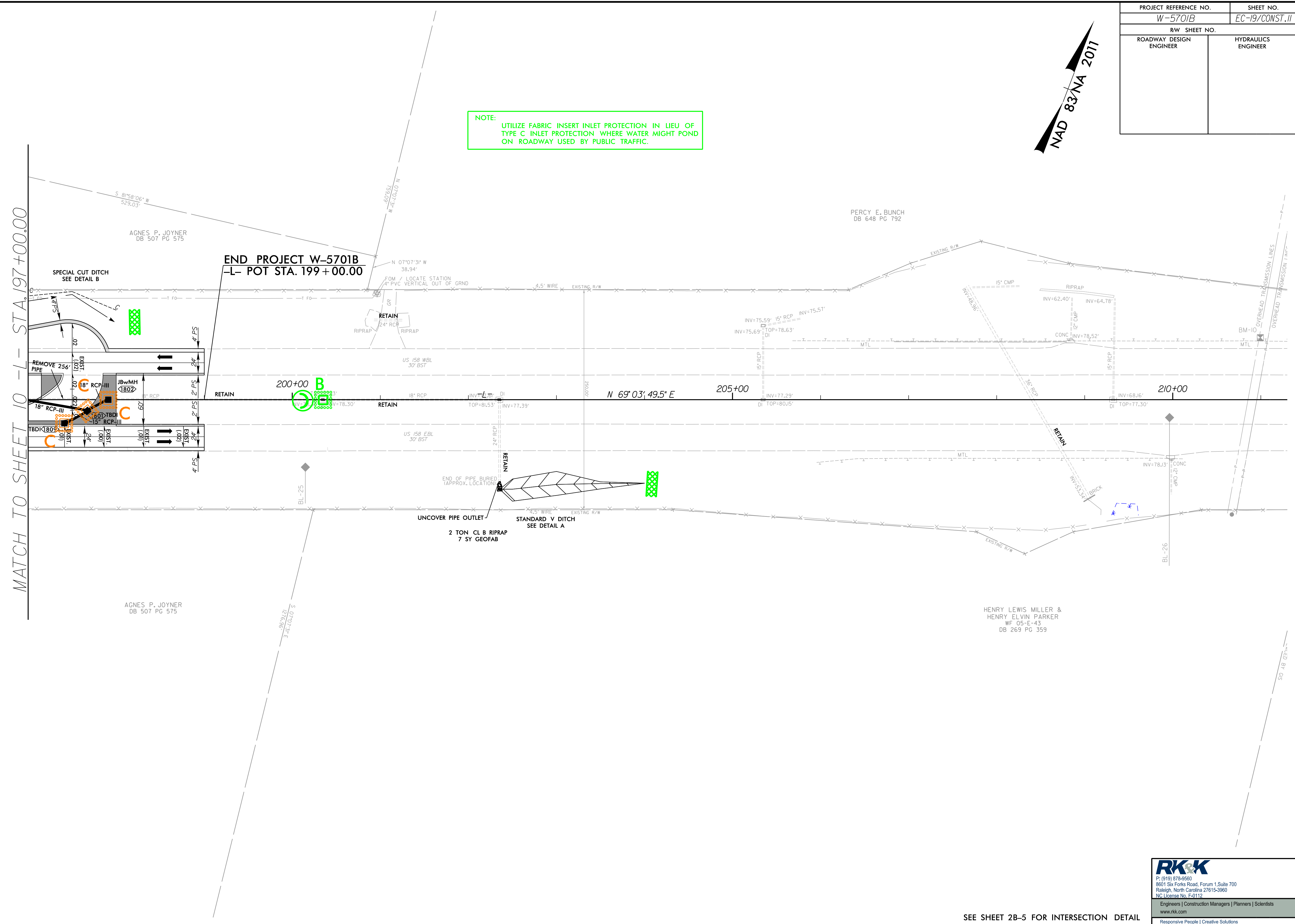


PROJECT REFERENCE NO.	SHEET NO.
W-5701B	EC-19/CONST.11
R/W SHEET NO.	
ROADWAY DESIGN ENGINEER	HYDRAULICS ENGINEER

NAD 83/NA 2011

NOTE:
UTILIZE FABRIC INSERT INLET PROTECTION IN LIEU OF TYPE C INLET PROTECTION WHERE WATER MIGHT POND ON ROADWAY USED BY PUBLIC TRAFFIC.

MATCH TO SHEET 10 -L- STA.197+00.00



AGNES P. JOYNER
DB 507 PG 575

PERCY E. BUNCH
DB 648 PG 792

END PROJECT W-5701B
-L- POT STA. 199+00.00

200+00 B

205+00

210+00

N 69°03'49.5" E

AGNES P. JOYNER
DB 507 PG 575

HENRY LEWIS MILLER &
HENRY ELVIN PARKER
WF 05-E-43
DB 269 PG 359

RK&K
P: (919) 878-9560
8601 Six Forks Road, Forum 1, Suite 700
Raleigh, North Carolina 27615-3960
NC License No. F-0112
Engineers | Construction Managers | Planners | Scientists
www.rkk.com
Responsive People | Creative Solutions

SEE SHEET 2B-5 FOR INTERSECTION DETAIL

5/14/99
C:\Users\CAD\Documents\Position Control\W5701B-Hyd-EC-psh_19.dgn