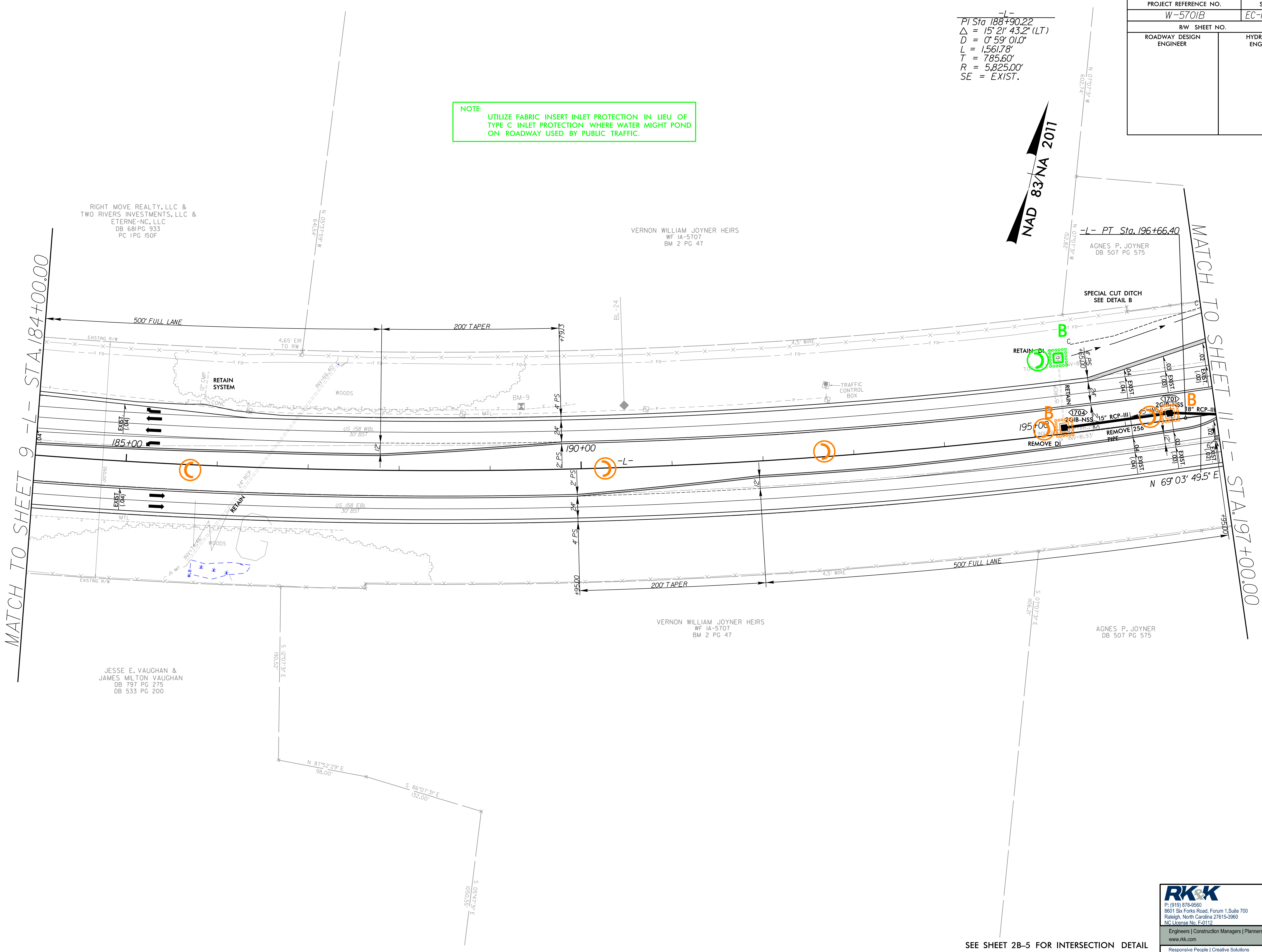


PROJECT REFERENCE NO.	SHEET NO.
W-5701B	EC-18/CONST.10
RW SHEET NO.	
ROADWAY DESIGN ENGINEER	HYDRAULICS ENGINEER

-L-
 PI Sta 188+90.22
 $\Delta = 15' 21' 43.2" (LT)$
 $D = 0' 59' 01.0"$
 $L = 1,561.78'$
 $T = 785.60'$
 $R = 5,825.00'$
 SE = EXIST.

NOTE: UTILIZE FABRIC INSERT INLET PROTECTION IN LIEU OF TYPE C INLET PROTECTION WHERE WATER MIGHT POND ON ROADWAY USED BY PUBLIC TRAFFIC.



MATCH TO SHEET 9 -L- STA. 184+00.00

MATCH TO SHEET 10 -L- STA. 197+00.00

NAD 83/NA 2011

RIGHT MOVE REALTY, LLC &
 TWO RIVERS INVESTMENTS, LLC &
 ETERNE-NC, LLC
 DB 681 PG 933
 PC 1 PG 150F

VERNON WILLIAM JOYNER HEIRS
 WF 1A-5707
 BM 2 PG 47

AGNES P. JOYNER
 DB 507 PG 575

JESSE E. VAUGHAN &
 JAMES MILTON VAUGHAN
 DB 797 PG 275
 DB 533 PG 200

VERNON WILLIAM JOYNER HEIRS
 WF 1A-5707
 BM 2 PG 47

AGNES P. JOYNER
 DB 507 PG 575

RK&K
 P: (919) 878-9560
 8601 Six Forks Road, Forum 1, Suite 700
 Raleigh, North Carolina 27615-3960
 NC License No. F-0112
 Engineers | Construction Managers | Planners | Scientists
 www.rkk.com
 Responsive People | Creative Solutions

SEE SHEET 2B-5 FOR INTERSECTION DETAIL

5/14/99

\\pultes\CADD\0618\2022\Position Control\W5701B-Hyd-EC-psh_18.dgn