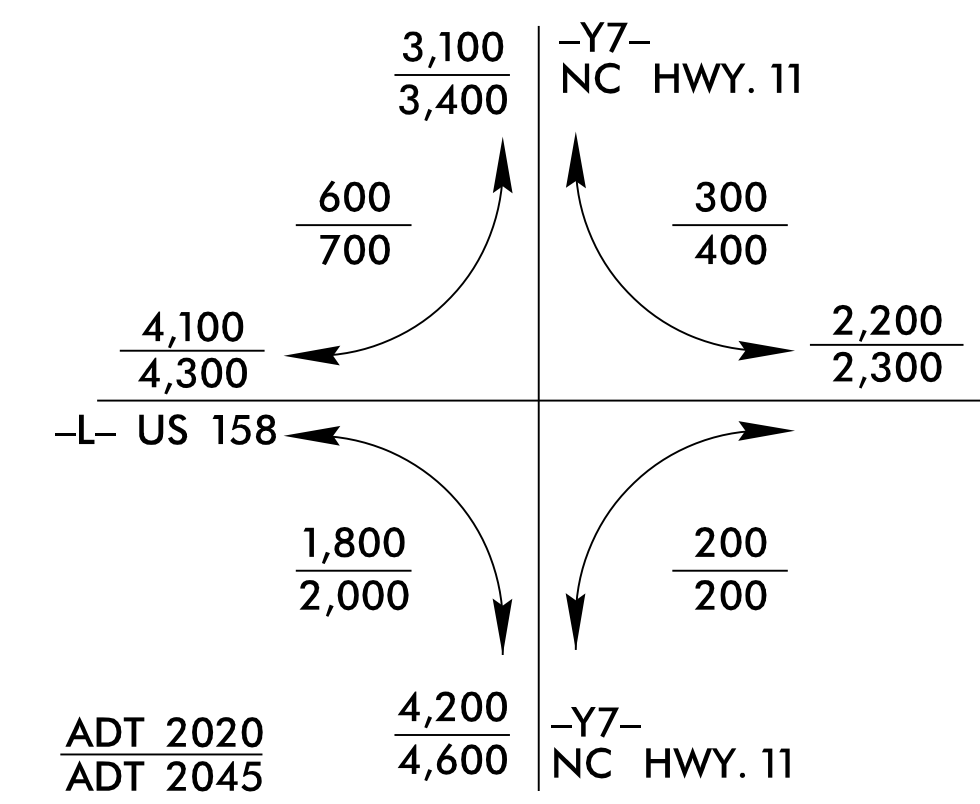
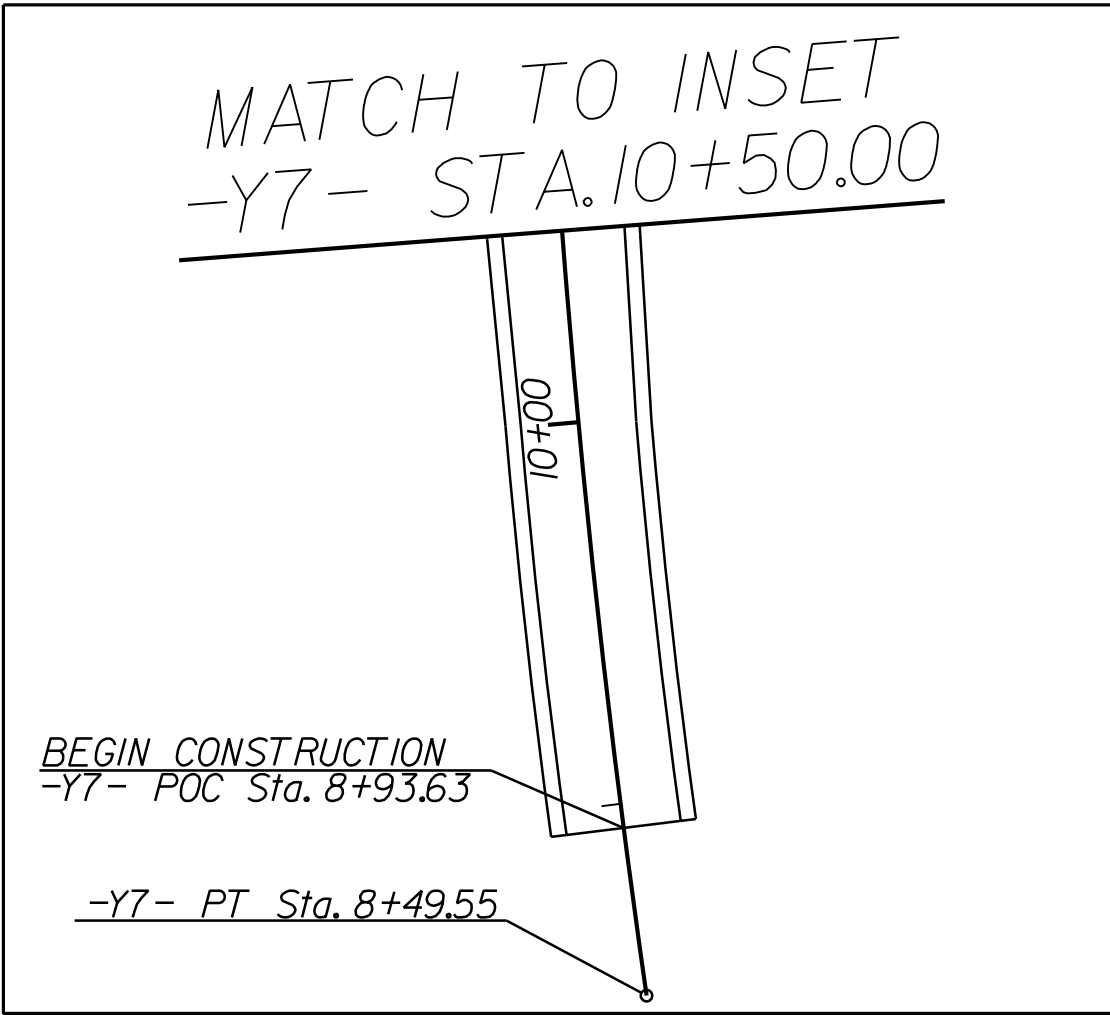
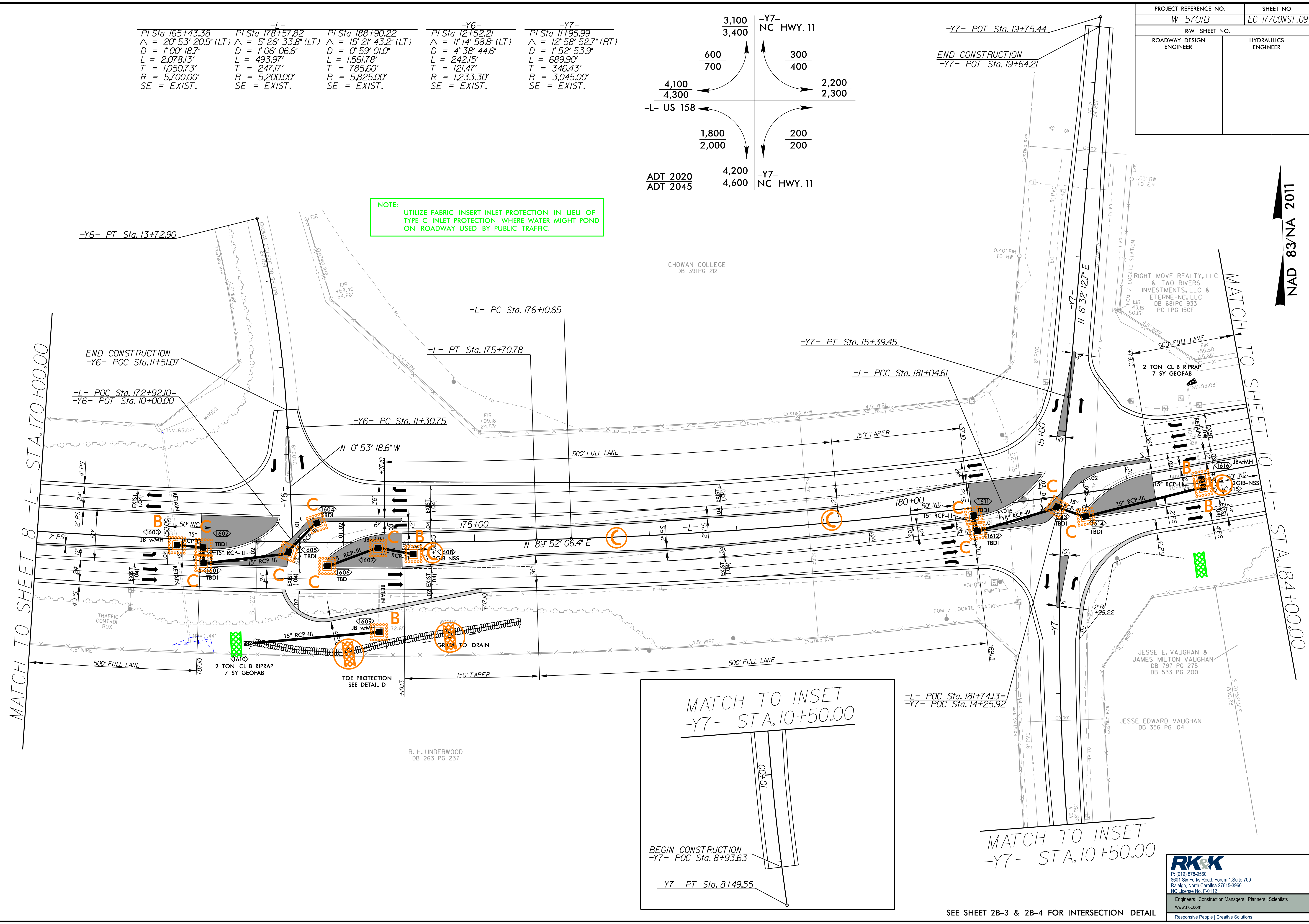


PROJECT REFERENCE NO.	SHEET NO.
W-5701B	EC-17/CONST.09
RW SHEET NO.	
ROADWAY DESIGN ENGINEER	HYDRAULICS ENGINEER

-L-	-Y6-	-Y6-	-Y6-	-Y7-	-Y7-
PI Sta 165+43.38	PI Sta 178+57.82	PI Sta 188+90.22	PI Sta 12+52.21	PI Sta 11+95.99	PI Sta 11+95.99
$\Delta = 20^\circ 53' 20.9" (LT)$	$\Delta = 5^\circ 26' 33.8" (LT)$	$\Delta = 15^\circ 21' 43.2" (LT)$	$\Delta = 11^\circ 14' 58.8" (LT)$	$\Delta = 12^\circ 58' 52.7" (RT)$	$\Delta = 12^\circ 58' 52.7" (RT)$
D = 1'00' 18.7"	D = 1'06' 06.6"	D = 0'59' 01.0"	D = 4'38' 44.6"	D = 1'52' 53.9"	D = 1'52' 53.9"
L = 2,078.13'	L = 493.97'	L = 1,561.78'	L = 242.15'	L = 689.90'	L = 689.90'
T = 1,050.73'	T = 247.17'	T = 785.60'	T = 121.47'	T = 346.43'	T = 346.43'
R = 5,700.00'	R = 5,200.00'	R = 5,825.00'	R = 1,233.30'	R = 3,045.00'	R = 3,045.00'
SE = EXIST.	SE = EXIST.	SE = EXIST.	SE = EXIST.	SE = EXIST.	SE = EXIST.



NOTE:
UTILIZE FABRIC INSERT INLET PROTECTION IN LIEU OF TYPE C INLET PROTECTION WHERE WATER MIGHT POND ON ROADWAY USED BY PUBLIC TRAFFIC.



SEE SHEET 2B-3 & 2B-4 FOR INTERSECTION DETAIL

RK&K
P: (919) 878-9560
8601 Six Forks Road, Forum 1, Suite 700
Raleigh, North Carolina 27615-3960
NC License No. F-0112

Engineers | Construction Managers | Planners | Scientists
www.rkk.com
Responsive People | Creative Solutions

5/14/2022
C:\Users\cra00001\Documents\Control\W5701B_Hyd_EC.psh.17.dgn

NAD 83/NA 2011