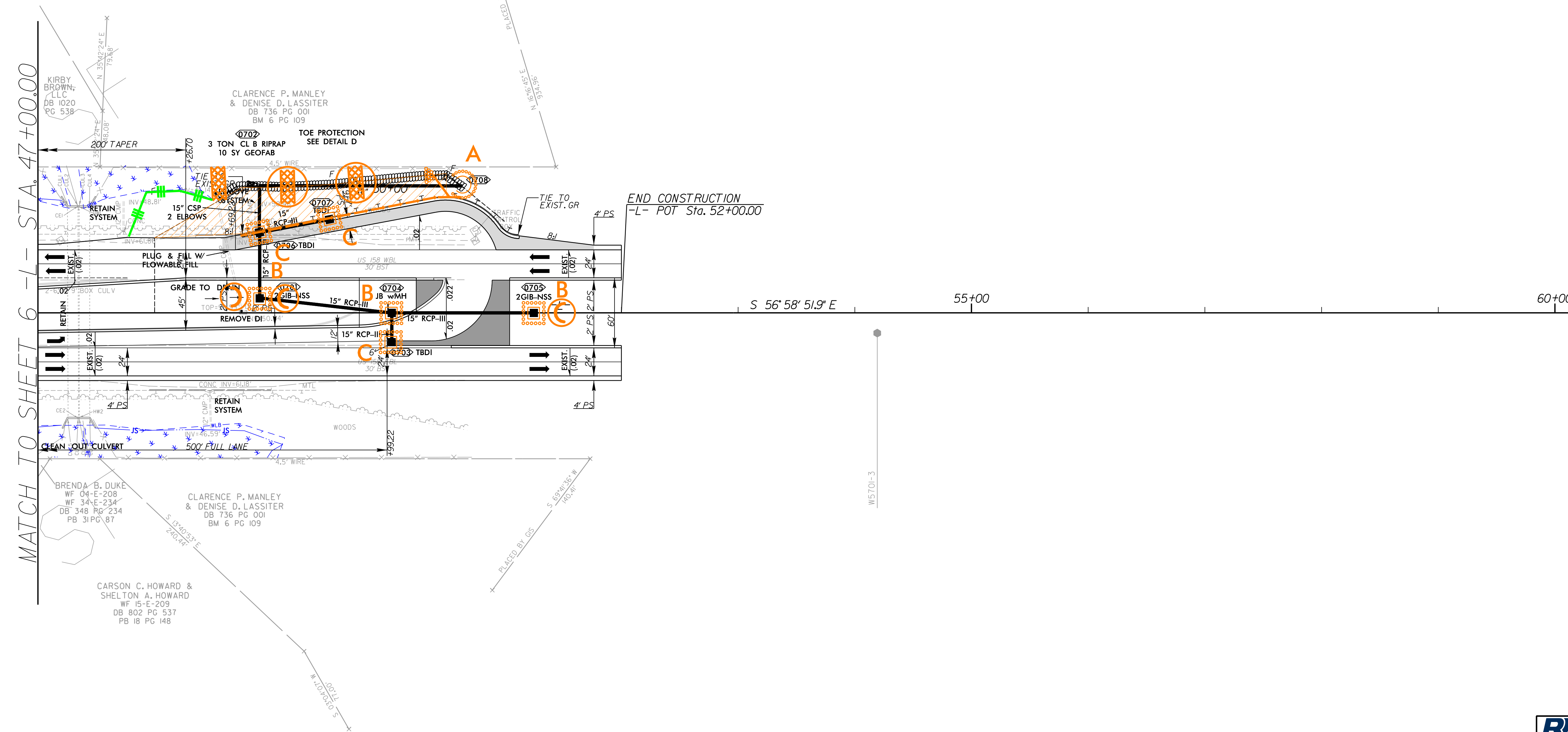


PROJECT REFERENCE NO.	SHEET NO.
W-5701B	EC-15/CONST.07
RW SHEET NO.	
ROADWAY DESIGN ENGINEER	HYDRAULICS ENGINEER

NOTE:  
UTILIZE FABRIC INSERT INLET PROTECTION IN LIEU OF TYPE C INLET PROTECTION WHERE WATER MIGHT POND ON ROADWAY USED BY PUBLIC TRAFFIC.

MAD 8/31/18 C/M



MATCH TO SHEET 6 - L - STA 47+00.00

END CONSTRUCTION  
-L- POT Sta. 52+00.00

SEE SHEET 2B-2 FOR INTERSECTION DETAIL

**RK&K**  
 P: (919) 878-9560  
 8601 Six Forks Road, Forum 1, Suite 700  
 Raleigh, North Carolina 27615-3960  
 NC License No. F-0112  
 Engineers | Construction Managers | Planners | Scientists  
 www.rkk.com  
 Responsive People | Creative Solutions

5/14/99  
 C:\p\lites\CAD\0618\2022\Position Control\W5701B-Hyd-EC.psh\_15.dgn  
 10/10/2020 5:00:11 AM