

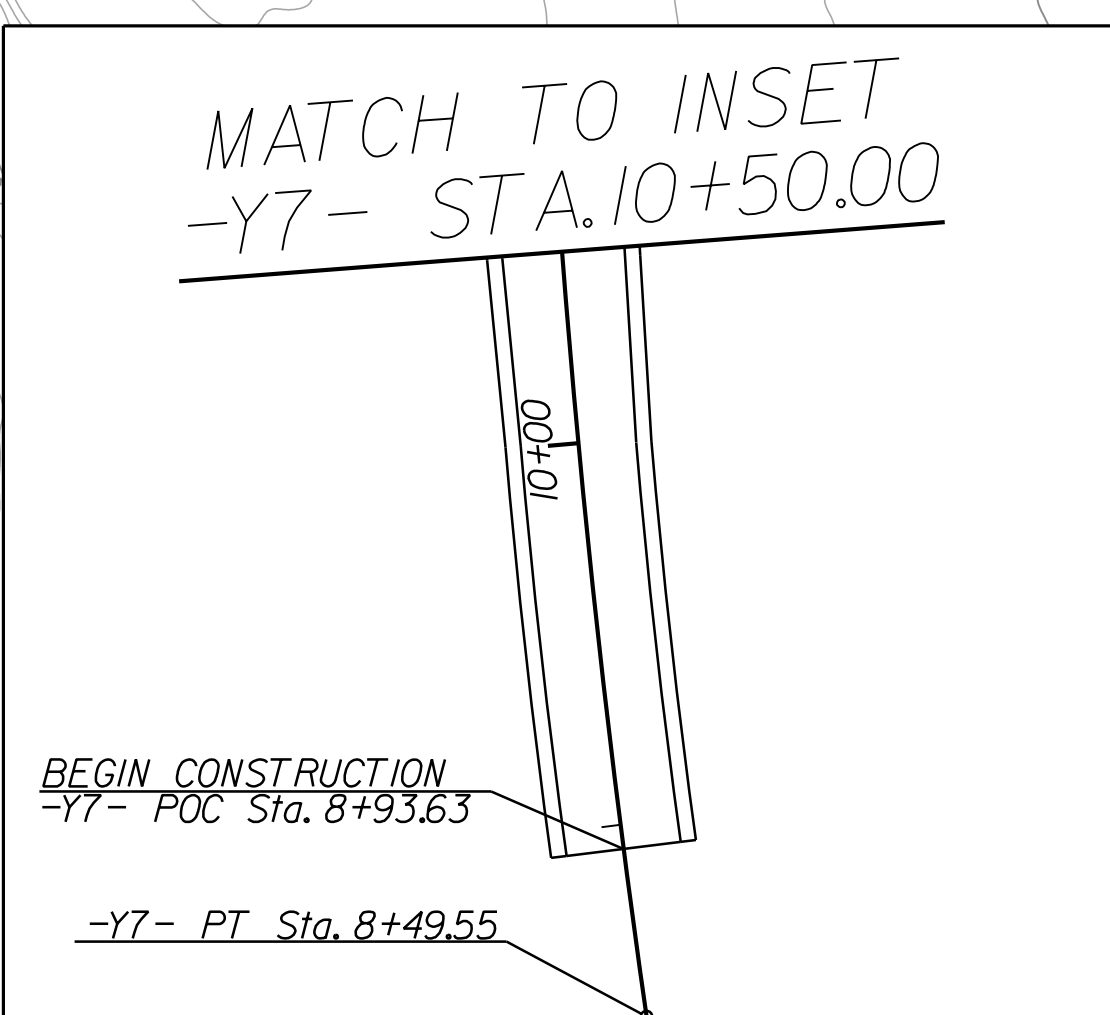
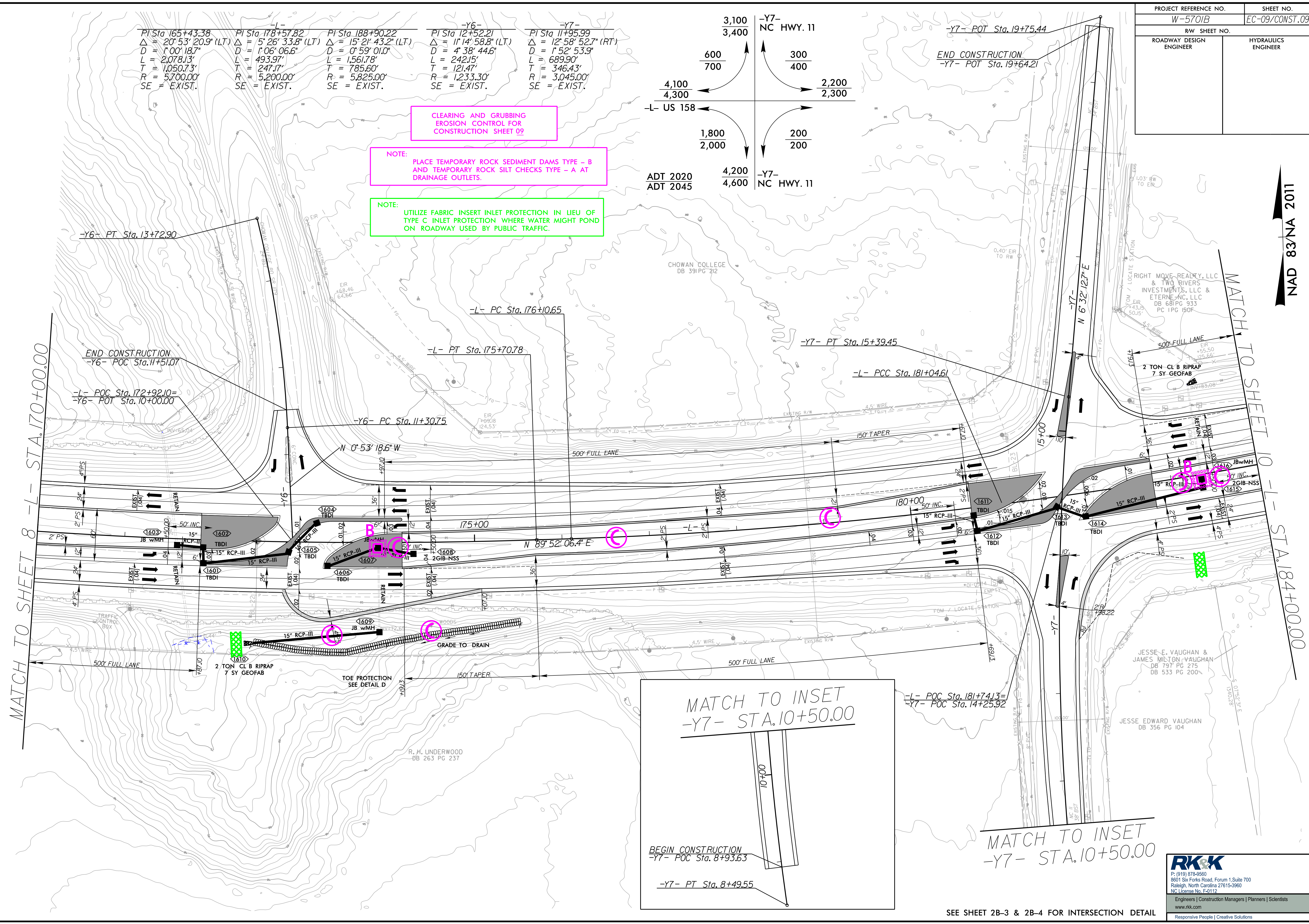
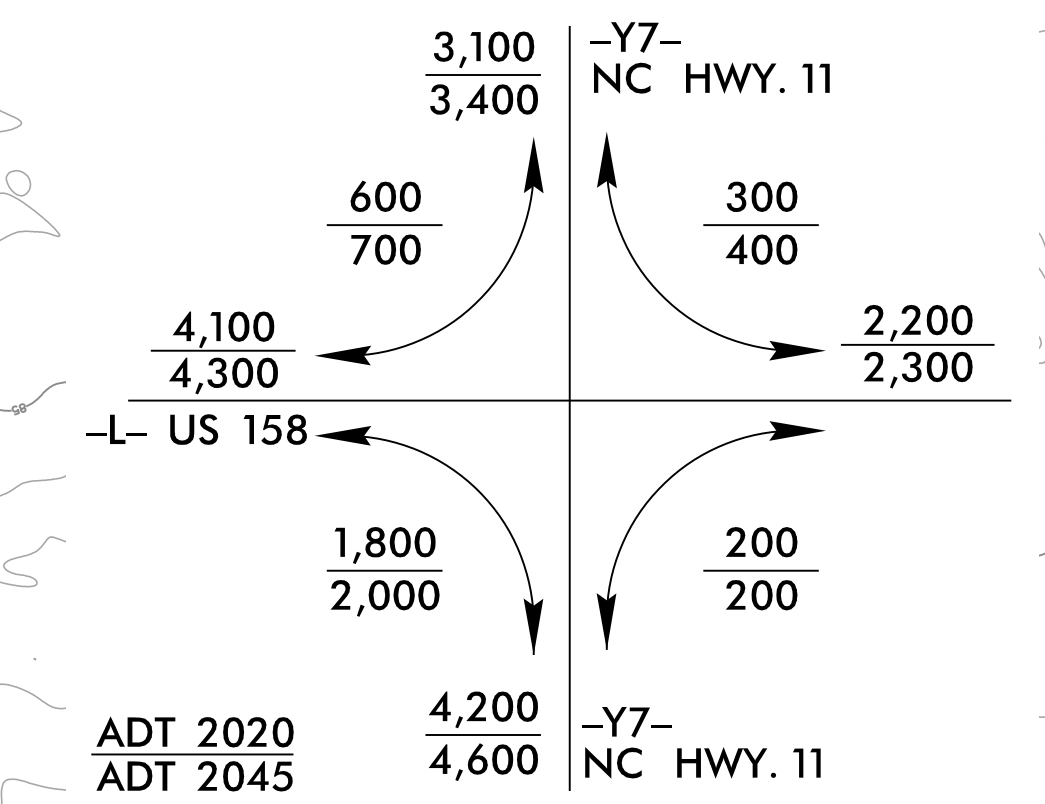
PROJECT REFERENCE NO.	SHEET NO.
W-5701B	EC-09/CONST.09
RDW SHEET NO.	
ROADWAY DESIGN ENGINEER	HYDRAULICS ENGINEER

-L-	-Y6-	-Y6-	-Y6-	-Y7-
PI Sta 165+43.38	PI Sta 178+57.82	PI Sta 188+90.22	PI Sta 12+52.21	PI Sta 11+95.99
$\Delta = 20^{\circ}53'20.9"$ (LT)	$\Delta = 5^{\circ}26'33.8"$ (LT)	$\Delta = 15^{\circ}21'43.2"$ (LT)	$\Delta = 11^{\circ}14'58.8"$ (LT)	$\Delta = 12^{\circ}58'52.7"$ (RT)
D = 1'00'18.7"	D = 1'06'06.6"	D = 0'59'01.0"	D = 4'38'44.6"	D = 1'52'53.9"
L = 2,078.13'	L = 493.97'	L = 1,561.78'	L = 242.15'	L = 689.90'
T = 1,050.73'	T = 247.17'	T = 785.60'	T = 121.47'	T = 346.43'
R = 5,700.00'	R = 5,200.00'	R = 5,825.00'	R = 1,233.30'	R = 3,045.00'
SE = EXIST.	SE = EXIST.	SE = EXIST.	SE = EXIST.	SE = EXIST.

CLEARING AND GRUBBING  
EROSION CONTROL FOR  
CONSTRUCTION SHEET 09

NOTE:  
PLACE TEMPORARY ROCK SEDIMENT DAMS TYPE - B  
AND TEMPORARY ROCK SILT CHECKS TYPE - A AT  
DRAINAGE OUTLETS.

NOTE:  
UTILIZE FABRIC INSERT INLET PROTECTION IN LIEU OF  
TYPE C INLET PROTECTION WHERE WATER MIGHT POND  
ON ROADWAY USED BY PUBLIC TRAFFIC.



SEE SHEET 2B-3 & 2B-4 FOR INTERSECTION DETAIL

**RK&K**  
P: (919) 878-9560  
8601 Six Forks Road, Forum 1, Suite 700  
Raleigh, North Carolina 27615-3960  
NC License No. F-0112  
Engineers | Construction Managers | Planners | Scientists  
www.rkk.com  
Responsive People | Creative Solutions

NAD 83/NA 2011

5/14/99  
C:\Users\CAD\Documents\Projects\W5701B\_Hyd\_EC\_psh\_09.dgn  
10/22/22